

# Distributor - VS-ASI-J-Y-N-SWA-LC - 1433168

Please be informed that the data shown in this PDF Document is generated from our Online Catalog. Please find the complete data in the user's documentation. Our General Terms of Use for Downloads are valid (<http://download.phoenixcontact.com>)



AS-Interface distributor with IP67 protection for 1 flat-ribbon conductor, 2-pos., with screw connection, angled



## Key commercial data

package_quantity	1
GTIN	4046356346252

## Technical data

### Mechanical characteristics

Number of positions	2
Connection method	AS-i penetration technique
Conductor cross section	0.14 mm <sup>2</sup> ... 1 mm <sup>2</sup> (solid)
Conductor cross section	0.14 mm <sup>2</sup> ... 0.75 mm <sup>2</sup> (With ferrules)
Connection cross section AWG	26 ... 17 (solid)
Connection cross section AWG	26 ... 18 (With ferrules)
External cable diameter	6 mm ... 8 mm
Cable exit	angled
Color	black

### Ambient conditions

Ambient temperature (operation)	-25 °C ... 70 °C (Plug / socket)
Ambient temperature (storage/transport)	-25 °C ... 70 °C
Degree of protection	IP67

### Material data

Housing material	PA
Contact carrier material	PUR
Contact material	CuZn
Contact surface material	Sn/Au
Sealing material	Neoprene (Flat gasket)
Sealing material	FPM (O-ring)

### Electrical characteristics

# Distributor - VS-ASI-J-Y-N-SWA-LC - 1433168

## Technical data

### Electrical characteristics

Rated voltage (III/3)	32 V
Rated current	≤ 4 A

## classifications

### eCl@ss

eCl@ss 4.0	27140815
eCl@ss 4.1	27140815
eCl@ss 5.0	27143423
eCl@ss 5.1	27143423
eCl@ss 6.0	27143423
eCl@ss 7.0	27449001
eCl@ss 8.0	27449001

### ETIM

ETIM 2.0	EC000200
ETIM 3.0	EC001856
ETIM 4.0	EC000313
ETIM 5.0	EC000313

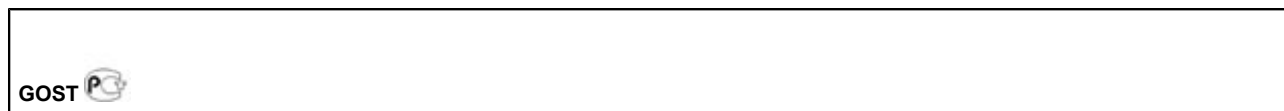
### UNSPSC

UNSPSC 6.01	31261501
UNSPSC 7.0901	31261501
UNSPSC 11	31261501
UNSPSC 12.01	31261501
UNSPSC 13.2	31261501

## approvals

GOST /

### Approval details



## accessories

### Sensor/actuator cable

## Distributor - VS-ASI-J-Y-N-SWA-LC - 1433168

### accessories

SAC-4P-MS/ 2,0-186 SCO - 1555606



SAC-4P-MS/ 5,0-186 SCO - 1555619



SAC-4P-MS/10,0-186 SCO - 1555622



SAC-4P-MS/15,0-186 SCO - 1555635



SAC-4P- 2,0-186/FS SCO - 1555648



SAC-4P- 5,0-186/FS SCO - 1555651



## Distributor - VS-ASI-J-Y-N-SWA-LC - 1433168

### accessories

---

SAC-4P-10,0-186/FS SCO - 1555664



SAC-4P-15,0-186/FS SCO - 1555677



### Screwdriver tools

---

SZK PH1 VDE - 1205150

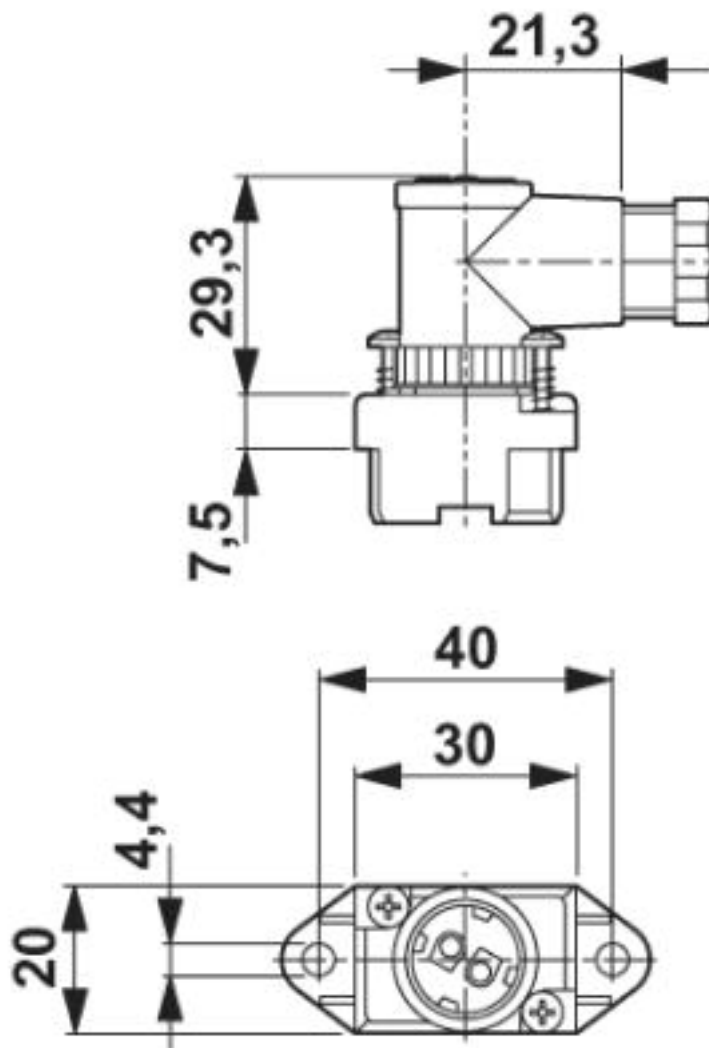


### Drawings

---

# Distributor - VS-ASI-J-Y-N-SWA-LC - 1433168

Dimensioned drawing



© Phoenix Contact 2013 - all rights reserved  
<http://www.phoenixcontact.com>