

Contact insert - VS-09-ST-DSUB-ER - 1688382

Please be informed that the data shown in this PDF Document is generated from our Online Catalog. Please find the complete data in the user's documentation. Our General Terms of Use for Downloads are valid (<http://download.phoenixcontact.com>)



D-SUB contact insert, shell size 1, with 9 signal contacts, contact type pin, for PCB mounting, angled, fixing with M3 thread and solder pins, for panel mounting frame VS-09-...

Key commercial data

package_quantity	10
GTIN	4017918818333

Technical data

Mechanical characteristics

Number of positions	9
Connection profile	D-SUB 9
Insertion/withdrawal cycles	≥ 200
Connection method	Solder connection
Insertion force per signal contact	≤ 3.40 N

Ambient conditions

Ambient temperature (operation)	-55 °C ... 125 °C
--	-------------------

Material data

Inflammability class according to UL 94	V0
Housing material	Steel, yellow chromated
Contact carrier material	Polyester GF
Contact material	Copper alloy
Contact surface material	Hard gold-plated over nickel

Electrical characteristics

Rated voltage (III/3)	125 V
Rated surge voltage	1 kV
Rated current	5 A

classifications

eCl@ss

eCl@ss 4.0	27140816
eCl@ss 4.1	27260701
eCl@ss 5.0	27260701

Contact insert - VS-09-ST-DSUB-ER - 1688382

classifications

eCl@ss

eCl@ss 5.1	27260701
eCl@ss 6.0	27261203
eCl@ss 7.0	27440202
eCl@ss 8.0	27440202

ETIM

ETIM 2.0	EC000437
ETIM 3.0	EC000437
ETIM 4.0	EC000437
ETIM 5.0	EC000437

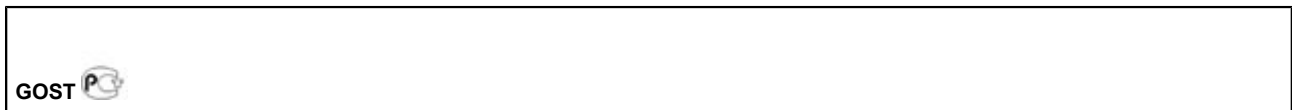
UNSPSC

UNSPSC 6.01	31261501
UNSPSC 7.0901	31261501
UNSPSC 11	31261501
UNSPSC 12.01	31261501
UNSPSC 13.2	31261501

approvals

GOST /

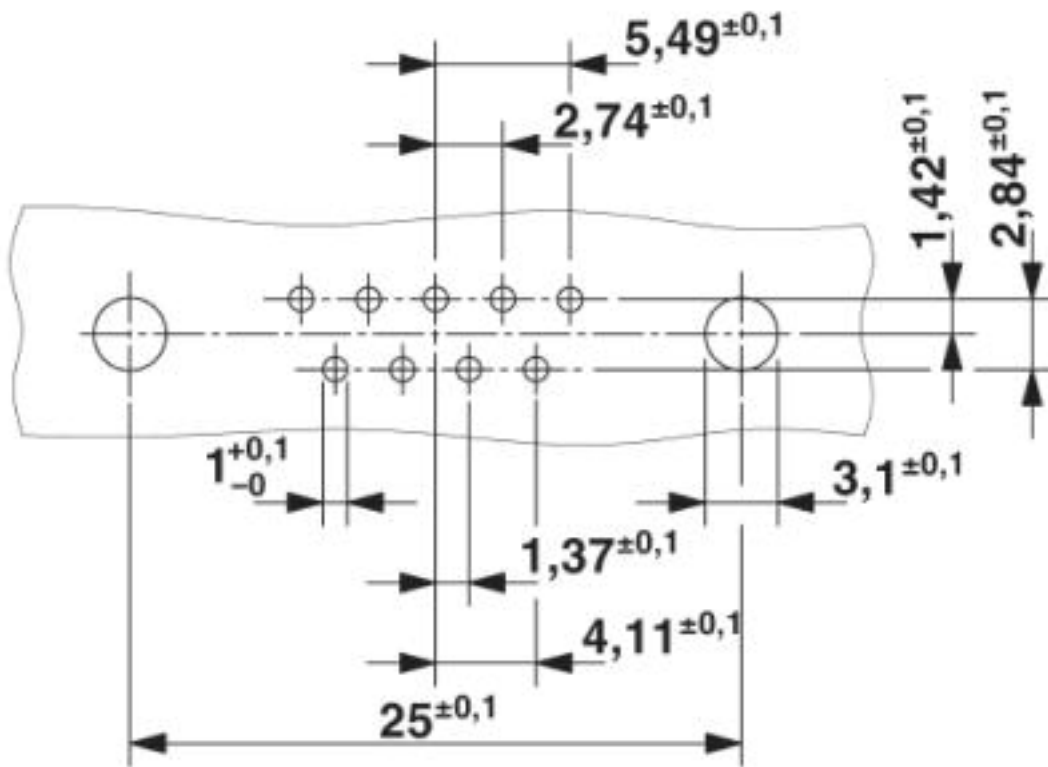
Approval details



Drawings

Contact insert - VS-09-ST-DSUB-ER - 1688382

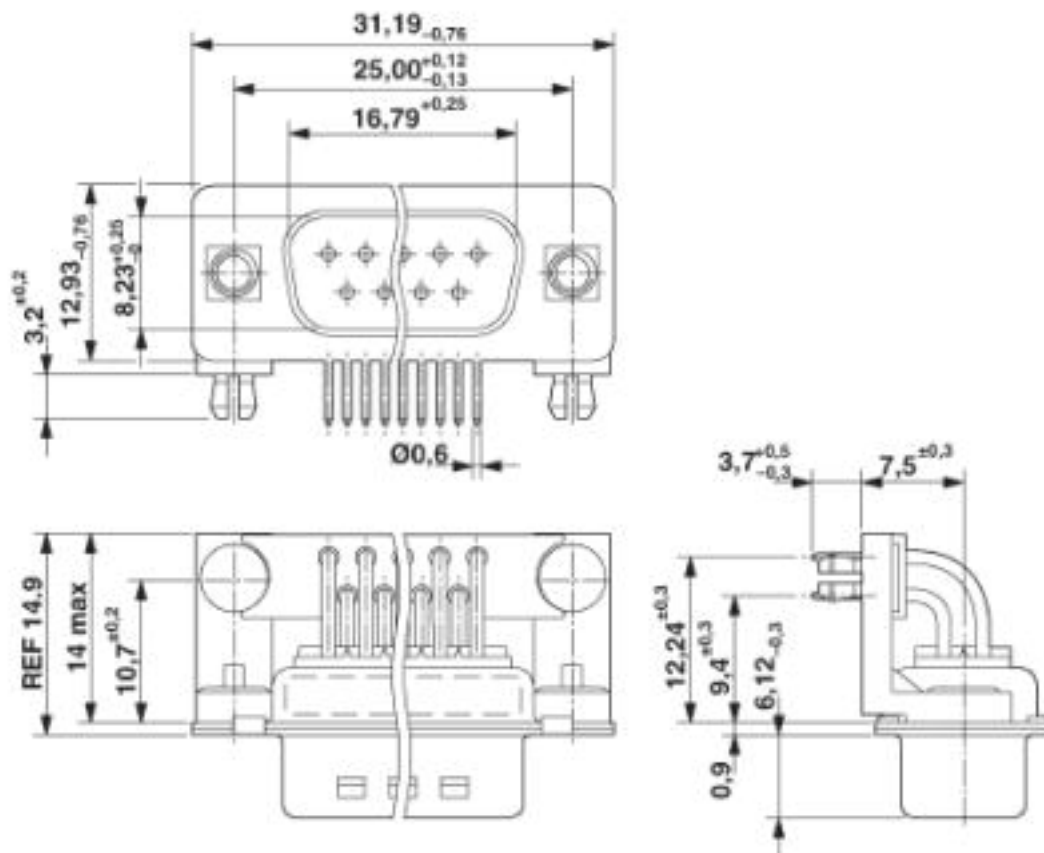
Drilling diagram



Drilling diagram

Contact insert - VS-09-ST-DSUB-ER - 1688382

Dimensioned drawing



D-SUB contact insert

Schematic diagram

© Phoenix Contact 2013 - all rights reserved
<http://www.phoenixcontact.com>