

D-SUB combination contact insert - VS-25-ST-DSUB-4P-5S-LH - 1655409

Please be informed that the data shown in this PDF Document is generated from our Online Catalog. Please find the complete data in the user's documentation. Our General Terms of Use for Downloads are valid (<http://download.phoenixcontact.com>)



D-SUB contact insert, shell size 3, with 5 signal contacts, for PCB assembly, angled, accommodation for 4 combined contacts, contact type pin, fixing with M3 thread and solder pins, for panel mounting frame VS-25-...

Key commercial data

| | |
|-------------------------|---------------|
| package_quantity | 10 |
| GTIN | 4046356029339 |

Technical data

Mechanical characteristics

| | |
|--|-------------------|
| Number of positions | 9 |
| Connection profile | 25-pos. D-SUB |
| Insertion/withdrawal cycles | ≥ 200 |
| Connection method | Solder connection |
| Insertion force per signal contact | ≤ 3.40 N |
| Extraction force per signal contact | ≥ 0.2 N |

Ambient conditions

| | |
|--|-------------------|
| Ambient temperature (operation) | -55 °C ... 125 °C |
|--|-------------------|

Material data

| | |
|--|-------------------------|
| Inflammability class according to UL 94 | V0 |
| Housing material | Steel, yellow chromated |
| Contact carrier material | PBTP |
| Contact material | Copper alloy |
| Contact surface material | Gold over nickel |

Electrical characteristics

| | |
|--|----------|
| Rated voltage (III/3) | 250 V |
| Rated current | 5 A |
| Contact resistance per contact pair | ≤ 2.7 mΩ |
| Insulation resistance | ≥ 5 GΩ |

D-SUB combination contact insert - VS-25-ST-DSUB-4P-5S-LH - 1655409

classifications

eCl@ss

| | |
|------------|----------|
| eCl@ss 4.0 | 27140816 |
| eCl@ss 4.1 | 27260701 |
| eCl@ss 5.0 | 27260701 |
| eCl@ss 5.1 | 27260701 |
| eCl@ss 6.0 | 27260705 |
| eCl@ss 7.0 | 27440309 |
| eCl@ss 8.0 | 27440309 |

ETIM

| | |
|----------|----------|
| ETIM 2.0 | EC000438 |
| ETIM 3.0 | EC000438 |
| ETIM 4.0 | EC000438 |
| ETIM 5.0 | EC000438 |

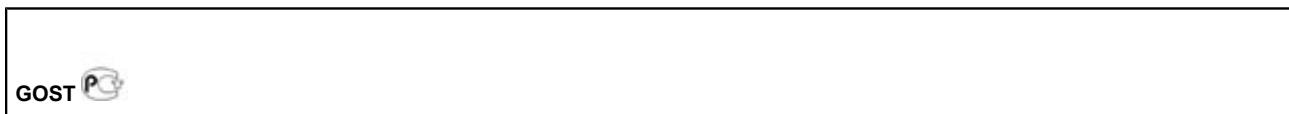
UNSPSC

| | |
|---------------|----------|
| UNSPSC 6.01 | 30211923 |
| UNSPSC 7.0901 | 39121522 |
| UNSPSC 11 | 39121522 |
| UNSPSC 12.01 | 39121522 |
| UNSPSC 13.2 | 39121522 |

approvals

GOST /

Approval details



accessories

Solder contact

VS-ST-LH-3,6/18/3,8 - 1655467



D-SUB combination contact insert - VS-25-ST-DSUB-4P-5S-LH - 1655409

accessories

VS-ST-KX-50-LP - 1655522

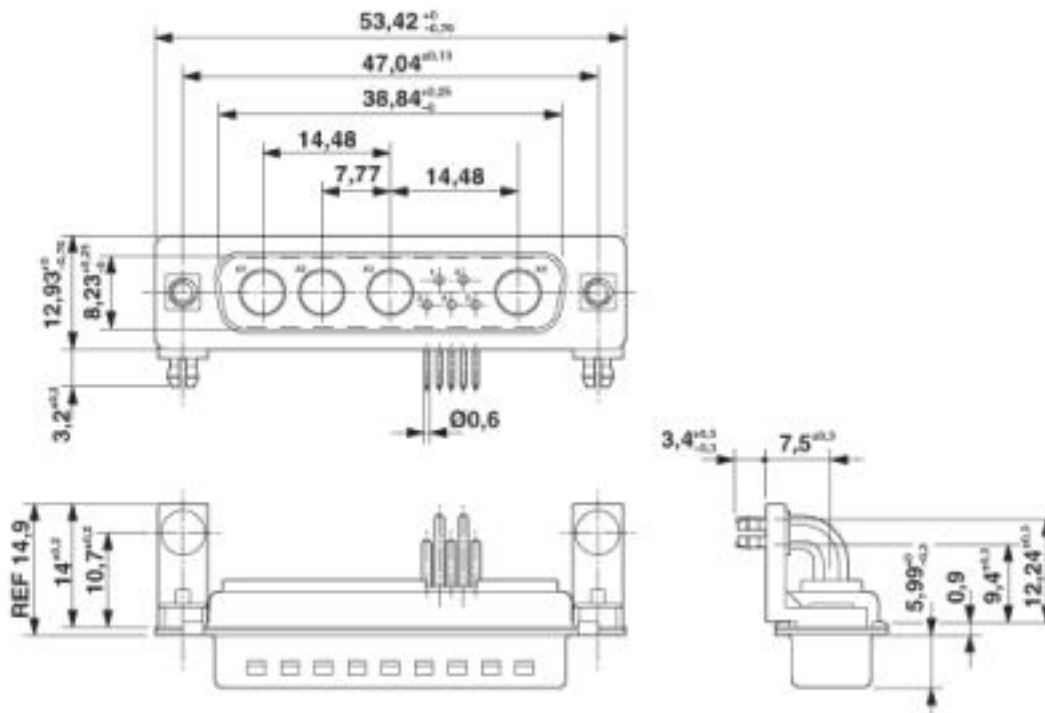


VS-ST-KX-75-LP - 1655645



Drawings

Dimensioned drawing



D-SUB contact insert