

DRAWING MADE IN AMERICAN PROJECTION

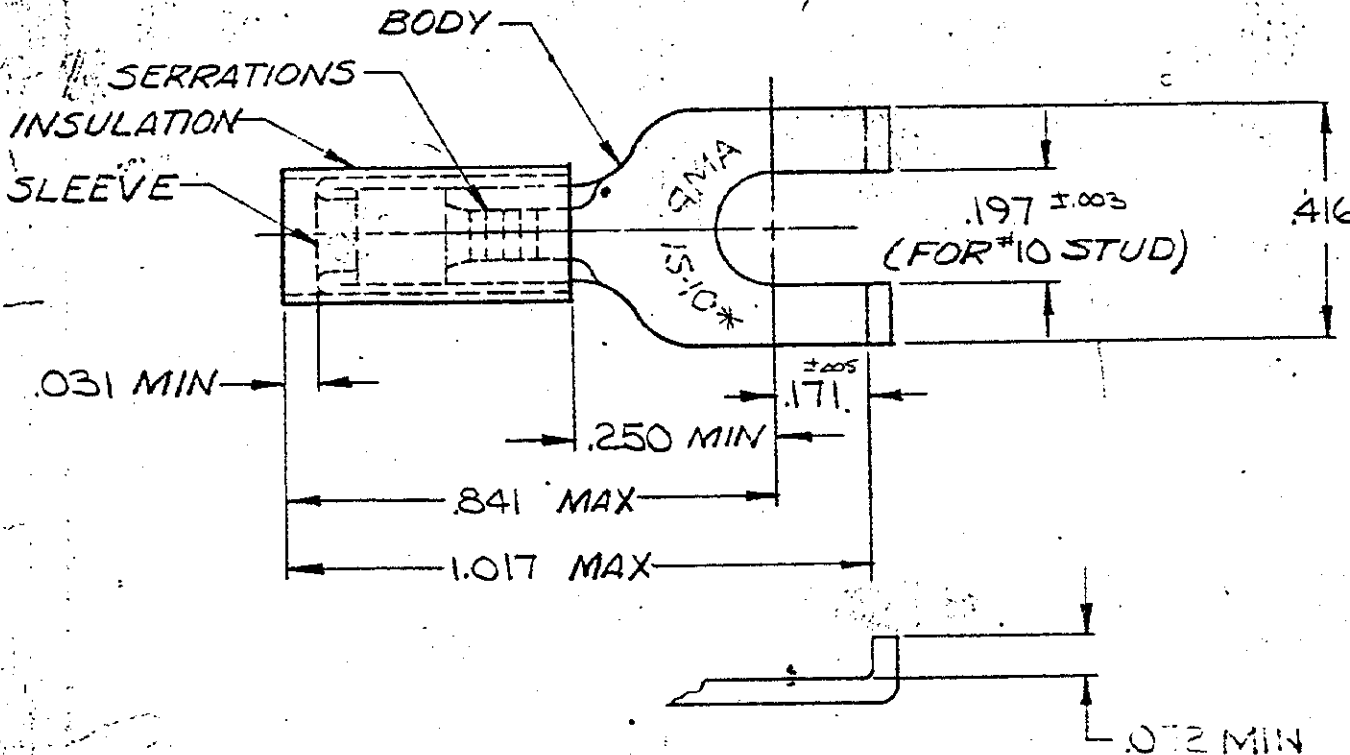
LQC
G

PRINT DIST
14

© 1958 BY AMP INCORPORATED. ALL RIGHTS RESERVED. AMP PRODUCTS COVERED BY PATENTS AND/OR PATENTS PENDING.


REVISIONS

LTR	DESCRIPTION	DATE	APPROVED
B	REDRAWN & ADDED TAPE NO'S P-6085	5-8-70	<i>JHC</i>
C	REVISED F-636 & P-6925	9-9-74	<i>P. Monaghan</i>
D	REV PER G-4732	1/26/77	<i>JT</i>
E	REV PER G-5646	1/21/91	<i>DKS</i>



FOR 150 TO 230 WIRE INS DIA
TONGUE MATERIAL THK. = .039 ±.002

1	326865 ON TAPE	2-326865-1	SLEEVE: COPPER (QQ-C-576) BODY: COPPER (QQ-C-576) TIN PL (MIL-T-10727)
1	WIRE TERMINAL	326865	INSULATION: NYLON COLOR: YELLOW

QTY	DESCRIPTION	PART NO	MATERIAL & FINISH
UNLESS OTHERWISE SPECIFIED DIMENSIONS ARE IN INCHES TOLERANCES ON: DECIMALS ±.008 ANGLES ±5°			 AMP INCORPORATED HARRISBURG, PENNSYLVANIA
MATERIAL			
SEE TABLE			NAME: WIRE TERMINAL P.I.D.G. - FLANGED SPADE WIRE SIZE: 12-10
CONTRACT NO. —			SIZE: A
DR. <i>W. Millhiser</i> 5-4-70			CODE IDENT NO.: 00779
CHK. <i>W. Enormer</i> 5-8-70			NUMBER: 326865
APPD. <i>Livabel</i> 5-11-70			SCALE: NTS
REL. <i>H. Long</i> 5/1/70			SHEET: 1 OF 1
DSGN APPD			
OTHER APPD			