

**THE NETHERLANDS
(N E D E R L A N D)****COMMUNICATION**

Concerning:

- approval granted
- ~~- approval extended~~
- ~~- approval refused~~
- ~~- approval withdrawn~~
- ~~- production definitely discontinued~~

of a type of daytime running lamp pursuant to Regulation number 87.

Approval number: E4-87R-00 0021**Extension number: 00**

1. Trade name or mark of the device : **JUST TOP** (JUST TOP)
2. Manufacturer's name for the type of device : JS-09309
3. Manufacturer's name and address : Just Auto Accessories Company Limited 63, 6F,
No.2, Lane 163, Hsinyi Road, Panchiao 220,
Taipei Hsien, Taiwan, Republic of China
4. If applicable, name and address of the manufacturer's representative : --
5. Submitted for approval on : 1 April 2009
6. Technical service responsible for conducting approval tests : KEMA Quality B.V.
7. Date of test report issued by that service : 2 June 2009
8. Number of test report issued by that service : 2122868-QUA/PHO 09-004-89
9. Concise description:
By category of lamp: RL



Number and category and kind of light source(s) : 18 non replaceable light sources (LED)

Voltage and wattage : 12V; 6W (for 12V version)
24V; 6W (for 24V version)

Application of an electronic light source control gear:

- Being part of the lamp : ~~yes~~/no
- Being not part of the lamp : ~~yes~~/no

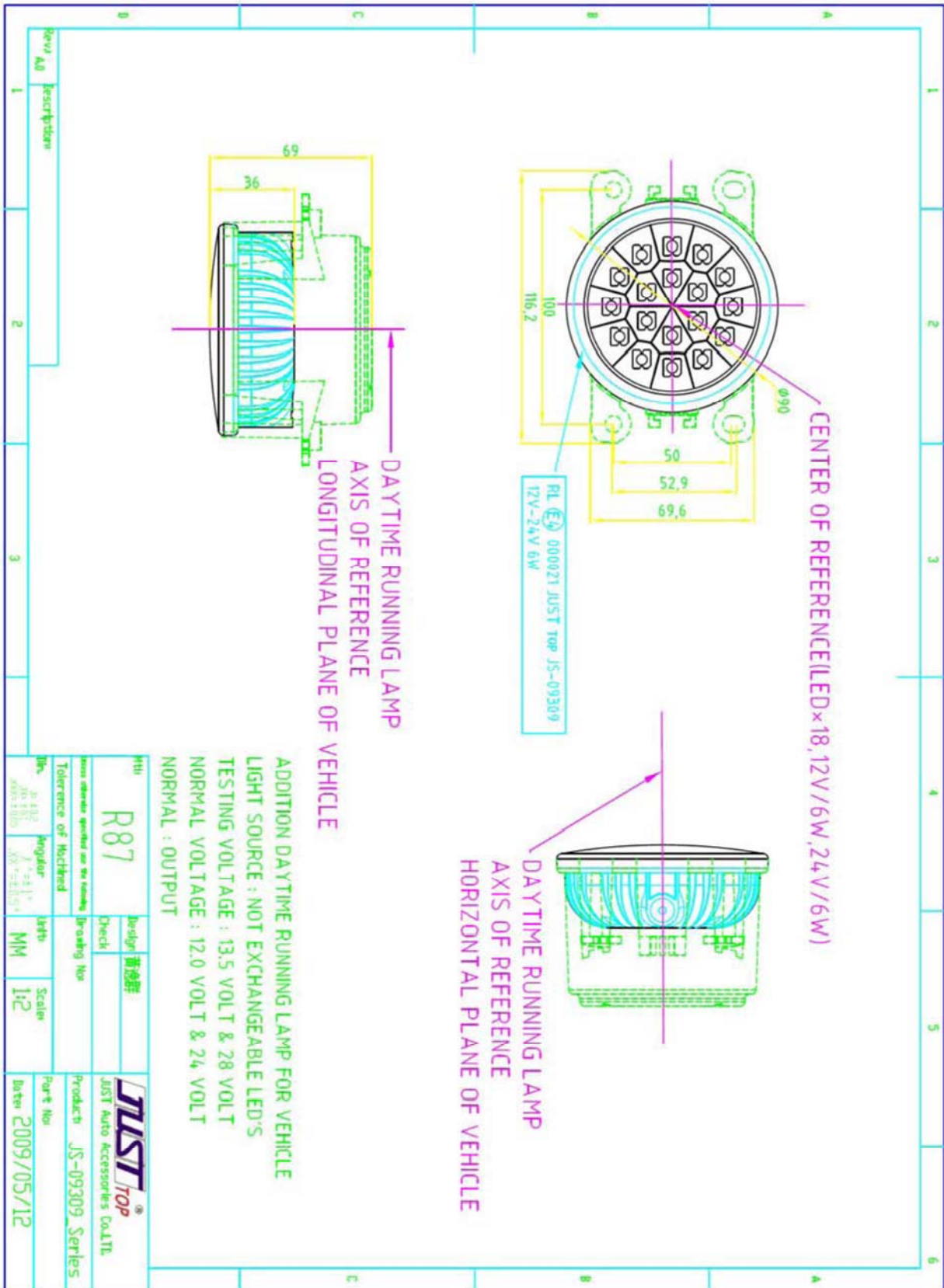
Input voltage supplied by an electronic light source control gear : --

Electronic light source control gear manufacturer and identification number (when the light source control gear is part of the lamp but is not included into the lamp body) : --

10. Position of the approval mark : See annexed drawing
11. Reason(s) for extension (If applicable) : --
12. Approval : ~~granted/refused/extended/withdrawn~~
13. Place : Zoetermeer
14. Date : 12-JUN-2009
15. Signature :



16. The list of documents deposited with the Administrative Service which has granted approval is annexed to this communication and may be obtained upon request.
- 1 Drawing No. JS-09309 dated 2009/05/12 (annexed)
 - Test report as mentioned in item 8





2122868-QUA/PHO 09-004-89

Approval testing of a daytime running lamp

trade mark, **JUST TOP** (JUST TOP),
type name JS-09309

Arnhem, 23 April 2009

Author J.L. Walhout

By order of Just Auto Accessories Company Limited, Taipei Hsien, Taiwan.

author : J.L.Walhout 02-06-2009 reviewed : W. van Laarhoven 02-06-2009
B 14 pages 4 annexes J.L.W/RVDVE approved : W. van Laarhoven (project manager) 02-06-2009



© KEMA Quality B.V., Arnhem, the Netherlands. All rights reserved.

It is prohibited to change any and all versions of this document in any manner whatsoever, including but not limited to dividing it into parts. In case of a conflict between the electronic version (e.g. PDF file) and the original paper version provided by KEMA, the latter will prevail.

KEMA Quality B.V. and/or its associated companies disclaim liability for any direct, indirect, consequential or incidental damages that may result from the use of the information or data, or from the inability to use the information or data contained in this document.

The contents of this report may only be transmitted to third parties in its entirety and provided with the copyright notice, prohibition to change, electronic versions' validity notice and disclaimer.

CONTENTS

	page
Summary	4
1 Application for approval testing	5
2 Examination	5
3 Results of examination	5
4 Supplementary remarks	5
Annex 1 Manufacturer's description	6
Annex 2 Drawing.....	7
Annex 3 Summary test results	9
Annex 4 Tables 1 up to 4 inclusive.....	11

SUMMARY

The tested samples of the daytime running lamp, marked **JUST TOP** (JUST TOP) type JS-09309 were found to comply with the requirements of ECE Regulation No. 87-00.

1 APPLICATION FOR APPROVAL TESTING

In the period from 27 March to 29 April 2009, samples of a daytime running lamp, trade name **JUST TOP** (JUST TOP), type name JS-09309, manufactured by Just Auto Accessories Company Limited. in TaipeiHsien, Taiwan were tested in the laboratory of ISOQA in Taichung, Taiwan. The daytime running lamp is equipped with 18 LEDs emitting white light.

A brief technical description and a drawing which were sufficiently detailed to permit identification of the model can be found in Annex 1 and 2 respectively.

The applicant desired an examination to check whether the daytime running lamp is in compliance with the requirements of the ECE Regulation No. 87-00.

2 EXAMINATION

The examination was carried out in accordance with the relevant clauses of the regulation concerned. The tests were performed taking into consideration the manufacturer's information concerning centre and axis of reference. For the photometric tests a test voltage of 13.5 V and 28V was applied.

The distance of measurement was 3.16m.

3 RESULTS OF EXAMINATION

The results of the tests are summarised in Annex 3. Detailed results of the tests of the lamps are presented in Annex 4, tables 1 up to 4.

4 SUPPLEMENTARY REMARKS

The approval number 87R-000021 was assigned. The approval marking is shown in the drawing of Annex 2.



Information Document

of Model Number- JS-09309

Approval Number: 87R-000021

Manufacturer		
Name	Just Auto Accessories Company Limited	
Address	6F, No.2, Lane 163, Hsinyi Road, Panchiao 220, Taipei Hsien, Taiwan, Republic of China	
Trade name or mark	JUST TOP (JUST TOP)	
Model Number	JS-09309	
Material of lens	Plastic	
daytime running lamp(Reg. 87)	Category	RL
	Light Source	LED*18, 12V, 6W / 24V, 6W
	Color of light emit	White
	Color of lens	Clear

Rev'd A.0	Description	1	2	3	4	5	6																																				
		<p style="color: magenta; text-align: center;">CENTER OF REFERENCE(LED×18,12V//6W,24V//6W)</p> <p style="color: magenta; text-align: center;">DAYTIME RUNNING LAMP AXIS OF REFERENCE HORIZONTAL PLANE OF VEHICLE</p>		<p style="color: magenta; text-align: center;">DAYTIME RUNNING LAMP AXIS OF REFERENCE LONGITUDINAL PLANE OF VEHICLE</p> <p style="color: magenta; text-align: center;">DAYTIME RUNNING LAMP FOR VEHICLE LIGHT SOURCE : NOT EXCHANGEABLE LED'S TESTING VOLTAGE : 13.5 VOLT & 28 VOLT NORMAL VOLTAGE : 12.0 VOLT & 24 VOLT NORMAL : OUTPUT</p>																																							
<p>RL (E) 000021 JUST TOP JS-09309 12V-24V 6W</p>		<table border="1" style="width: 100%; border-collapse: collapse;"> <tr> <td style="width: 15%;">Part No</td> <td colspan="2">R87</td> <td style="width: 15%;">Design</td> <td colspan="2">黃德群</td> <td style="width: 15%;">Check</td> <td colspan="2"></td> </tr> <tr> <td style="width: 15%;">Drawing No</td> <td colspan="2"></td> <td style="width: 15%;">Scale</td> <td colspan="2">1:2</td> <td style="width: 15%;">Unit</td> <td colspan="2">MM</td> </tr> <tr> <td style="width: 15%;">Product</td> <td colspan="2">JUST Auto Accessories Co.,LTD.</td> <td style="width: 15%;">Date</td> <td colspan="2">2009/05/12</td> <td style="width: 15%;">Part No</td> <td colspan="2"></td> </tr> <tr> <td style="width: 15%;">Series</td> <td colspan="2">JS-09309</td> <td style="width: 15%;">Tolerance of Machined</td> <td colspan="2"> H_s ±0.2 X_M ±0.15 XX_V ±0.05 </td> <td style="width: 15%;">Angular</td> <td colspan="2"> A° = ±1° XX° = ±0.5° </td> </tr> </table>						Part No	R87		Design	黃德群		Check			Drawing No			Scale	1:2		Unit	MM		Product	JUST Auto Accessories Co.,LTD.		Date	2009/05/12		Part No			Series	JS-09309		Tolerance of Machined	H _s ±0.2 X _M ±0.15 XX _V ±0.05		Angular	A° = ±1° XX° = ±0.5°	
Part No	R87		Design	黃德群		Check																																					
Drawing No			Scale	1:2		Unit	MM																																				
Product	JUST Auto Accessories Co.,LTD.		Date	2009/05/12		Part No																																					
Series	JS-09309		Tolerance of Machined	H _s ±0.2 X _M ±0.15 XX _V ±0.05		Angular	A° = ±1° XX° = ±0.5°																																				



FRONT VIEW



SIDE VIEW



REAR VIEW

Examination of daytime running lamp JS-09309 carried out according to the relevant clauses of Regulation No. 87-00

Clause No.	Subject of the relevant clause	Judgement of the device	Remark
4	1 trade name or mark	complies	
	2 space reserved for the approval mark	complies	
6	General specifications:		
	a intensity and colour of the light emitted	complies	see Annex 4
	b maintenance of satisfactory operation and of photometric characteristics	complies	by visual inspection only
	c field of visibility horizontal and vertical	complies	
	d The filament lamp holder conform to IEC Publication 60061.	complies	
7	intensity of the light emitted	complies	see tables ¹ 1 and 2

¹ The rest results show that even if one light source is failing, the lamp continues to meet the requirements.

Clause No.	Subject of the relevant clause	Judgement of the device	Remark
8	Approval Surface	complies	40 cm ²
9	colour of the light emitted	complies	²
11	Heat resistance test	complies	

² Daytime running lamp emitted white light (12V) : x=0.3111 y=0.3102
Daytime running lamp emitted white light (24V) : x=0.3101 y=0.3091

Daytime Running Lamp - 12V (sample 1)

ISOQA

PHOTOMETRIC RESULTS

Program:	(2006.07.24)	ECE R 87 Daytime Running-LED	
DRL Daytime running lights			
Name:	09-0146 JS-090309 S090829 for ECE R87 Daytime Running Lamp-(12V)		
Number:	L090214		
Test distance:	3.16	Meas.-no.:	
Lamp type:	LED 13.5V		
Number:	LED		
Flux:	0.000 lm	Operator:	Lawrence
Voltage:	13.500 V	Date:	3/27/2009 5:34:44 PM
Current:	0.433 A	Set value:	Const. voltage
X-offset:	0.00°	Y-offset:	0.00°
Comment:			

ECE R 87 Daytime Running-LED

Function	Min	Max	Value	H	V	N.O.K.
H - V(1min)	400	1200	758.500	0.00°	0.00°	
H - V(30min)	400	1200	642.100	0.00°	0.00°	
10U - 5L	80	1200	112.400	-5.00°	10.00°	
10U - H	80	1200	123.700	0.00°	10.00°	
10U - 5R	80	1200	110.300	5.00°	10.00°	
5U - 20R	40	1200	120.200	20.00°	5.00°	
5U - 10R	80	1200	265.900	10.00°	5.00°	
5U - V	280	1200	392.900	0.00°	5.00°	
5U - 10L	80	1200	272.500	-10.00°	5.00°	
5U - 20L	40	1200	124.600	-20.00°	5.00°	
H - 20L	100	1200	226.500	-20.00°	0.00°	
H - 10L	280	1200	457.000	-10.00°	0.00°	
H - 5L	360	1200	588.600	-5.00°	0.00°	
H - 5R	360	1200	573.500	5.00°	0.00°	
H - 10R	280	1200	438.200	10.00°	0.00°	
H - 20R	100	1200	213.500	20.00°	0.00°	
5D - 20R	40	1200	120.400	20.00°	-5.00°	
5D - 10R	80	1200	258.800	10.00°	-5.00°	
5D - V	280	1200	389.900	0.00°	-5.00°	
5D - 10L	80	1200	274.900	-10.00°	-5.00°	
5D - 20L	40	1200	127.400	-20.00°	-5.00°	
10D - 5L	80	1200	94.200	-5.00°	-10.00°	
10D - H	80	1200	102.800	0.00°	-10.00°	
10D - 5R	80	1200	91.400	5.00°	-10.00°	

ISOQA-01 (Taiwan Taichung Laboratory)

60Yong Long Road Da-Li Taichung Taiwan ROC

Tel:886-4-24061011 Fax:886-4-24060419 E-mail:isoqa@isoqalab.com Http://www.isoqalab.com



Daytime Running Lamp - 12V (sample 2)

ISOQA

PHOTOMETRIC RESULTS

Program:	(2006.07.24)	ECE R 87 Daytime Running-LED	
DRL Daytime running lights			
Name:	09-0146 JS-090309 S090830 for ECE R87 Daytime Running Lamp-(12V)		
Number:	L090214		
Test distance:	3.16	Meas.-no.:	
Lamp type:	LED 13.5V		
Number:	LED		
Flux:	0.000 lm	Operator:	Lawrence
Voltage:	13.500 V	Date:	3/27/2009 8:21:30 PM
Current:	0.425 A	Set value:	Const. voltage
X-offset:	0.00°	Y-offset:	0.00°
Comment:			

ECE R 87 Daytime Running-LED

Function	Min	Max	Value	H	V	N.O.K.
H - V(1min)	400	1200	691.700	0.00°	0.00°	
H - V(30min)	400	1200	599.600	0.00°	0.00°	
10U - 5L	80	1200	109.400	-5.00°	10.00°	
10U - H	80	1200	124.200	0.00°	10.00°	
10U - 5R	80	1200	113.700	5.00°	10.00°	
5U - 20R	40	1200	131.100	20.00°	5.00°	
5U - 10R	80	1200	281.700	10.00°	5.00°	
5U - V	280	1200	391.100	0.00°	5.00°	
5U - 10L	80	1200	259.700	-10.00°	5.00°	
5U - 20L	40	1200	115.400	-20.00°	5.00°	
H - 20L	100	1200	196.000	-20.00°	0.00°	
H - 10L	280	1200	406.700	-10.00°	0.00°	
H - 5L	360	1200	532.500	-5.00°	0.00°	
H - 5R	360	1200	553.400	5.00°	0.00°	
H - 10R	280	1200	432.500	10.00°	0.00°	
H - 20R	100	1200	211.600	20.00°	0.00°	
5D - 20R	40	1200	126.200	20.00°	-5.00°	
5D - 10R	80	1200	278.800	10.00°	-5.00°	
5D - V	280	1200	403.900	0.00°	-5.00°	
5D - 10L	80	1200	275.400	-10.00°	-5.00°	
5D - 20L	40	1200	126.700	-20.00°	-5.00°	
10D - 5L	80	1200	116.500	-5.00°	-10.00°	
10D - H	80	1200	128.800	0.00°	-10.00°	
10D - 5R	80	1200	114.600	5.00°	-10.00°	

ISOQA-01 (TaiwanTaichung Laboratory)
60Yong Long RoadDa-LiTaichungTaiwan ROC
Tel:886-4-24061011 Fax:886-4-24060419 E-mail:isoqa@isoqalab.com Http://www.isoqalab.com



Daytime Running Lamp - 24V (sample 1)

ISOQA

PHOTOMETRIC RESULTS

Program:	(2006.07.24)	ECE R 87 Daytime Running-LED	
DRL Daytime running lights			
Name:	09-0146 JS-090309 S090829 for ECE R87 Daytime Running Lamp-(24V)		
Number:	L090214		
Test distance:	3.16	Meas.-no.:	
Lamp type:	LED 28V		
Number:	Light Source 1		
Flux:	0.000 lm	Operator:	Lawrence
Voltage:	28.005 V	Date:	3/27/2009 6:20:32 PM
Current:	0.208 A	Set value:	Const. voltage
X-offset:	0.00°	Y-offset:	0.00°
Comment:			

ECE R 87 Daytime Running-LED

Function	Min	Max	Value	H	V	N.O.K.
H - V(1min)	400	1200	713.700	0.00°	0.00°	
H - V(30min)	400	1200	534.200	0.00°	0.00°	
10U - 5L	80	1200	94.200	-5.00°	10.00°	
10U - H	80	1200	103.600	0.00°	10.00°	
10U - 5R	80	1200	92.400	5.00°	10.00°	
5U - 20R	40	1200	100.400	20.00°	5.00°	
5U - 10R	80	1200	222.700	10.00°	5.00°	
5U - V	280	1200	329.600	0.00°	5.00°	
5U - 10L	80	1200	229.200	-10.00°	5.00°	
5U - 20L	40	1200	104.800	-20.00°	5.00°	
H - 20L	100	1200	189.700	-20.00°	0.00°	
H - 10L	280	1200	382.100	-10.00°	0.00°	
H - 5L	360	1200	491.300	-5.00°	0.00°	
H - 5R	360	1200	477.700	5.00°	0.00°	
H - 10R	280	1200	365.400	10.00°	0.00°	
H - 20R	100	1200	178.600	20.00°	0.00°	
5D - 20R	40	1200	100.800	20.00°	-5.00°	
5D - 10R	80	1200	216.400	10.00°	-5.00°	
5D - V	280	1200	325.600	0.00°	-5.00°	
5D - 10L	80	1200	230.500	-10.00°	-5.00°	
5D - 20L	40	1200	107.100	-20.00°	-5.00°	
10D - 5L	80	1200	87.100	-5.00°	-10.00°	
10D - H	80	1200	85.900	0.00°	-10.00°	
10D - 5R	80	1200	88.600	5.00°	-10.00°	

ISOQA-01 (TaiwanTaichung Laboratory)

60Yong Long RoadDa-LiTaichungTaiwan ROC

Tel:886-4-24061011 Fax:886-4-24060419 E-mail:isoqa@isoqalab.com Http://www.isoqalab.com



Daytime Running Lamp - 24V (sample 2)

ISOQA

PHOTOMETRIC RESULTS

Program:	(2006.07.24)	ECE R 87 Daytime Running-LED	
DRL Daytime running lights			
Name:	09-0146 JS-090309 S090830 for ECE R87 Daytime Running Lamp-(24V)		
Number:	L090214		
Test distance:	3.16	Meas.-no.:	
Lamp type:	LED 28V		
Number:	Light Source 1		
Flux:	0.000 lm	Operator:	Lawrence
Voltage:	28.005 V	Date:	3/27/2009 9:16:29 PM
Current:	0.170 A	Set value:	Const. voltage
X-offset:	0.00°	Y-offset:	0.00°
Comment:			

ECE R 87 Daytime Running-LED

Function	Min	Max	Value	H	V	N.O.K.
H - V(1min)	400	1200	696.500	0.00°	0.00°	
H - V(30min)	400	1200	480.300	0.00°	0.00°	
10U - 5L	80	1200	89.200	-5.00°	10.00°	
10U - H	80	1200	101.200	0.00°	10.00°	
10U - 5R	80	1200	92.600	5.00°	10.00°	
5U - 20R	40	1200	106.000	20.00°	5.00°	
5U - 10R	80	1200	228.400	10.00°	5.00°	
5U - V	280	1200	317.200	0.00°	5.00°	
5U - 10L	80	1200	211.400	-10.00°	5.00°	
5U - 20L	40	1200	93.900	-20.00°	5.00°	
H - 20L	100	1200	157.900	-20.00°	0.00°	
H - 10L	280	1200	327.500	-10.00°	0.00°	
H - 5L	360	1200	428.000	-5.00°	0.00°	
H - 5R	360	1200	443.500	5.00°	0.00°	
H - 10R	280	1200	347.100	10.00°	0.00°	
H - 20R	100	1200	169.900	20.00°	0.00°	
5D - 20R	40	1200	101.600	20.00°	-5.00°	
5D - 10R	80	1200	223.800	10.00°	-5.00°	
5D - V	280	1200	323.800	0.00°	-5.00°	
5D - 10L	80	1200	221.800	-10.00°	-5.00°	
5D - 20L	40	1200	101.900	-20.00°	-5.00°	
10D - 5L	80	1200	93.700	-5.00°	-10.00°	
10D - H	80	1200	103.500	0.00°	-10.00°	
10D - 5R	80	1200	92.100	5.00°	-10.00°	

ISOQA-01 (TaiwanTaichung Laboratory)

60Yong Long RoadDa-LiTaichungTaiwan ROC

Tel:886-4-24061011 Fax:886-4-24060419 E-mail:isoqa@isoqalab.com Http://www.isoqalab.com