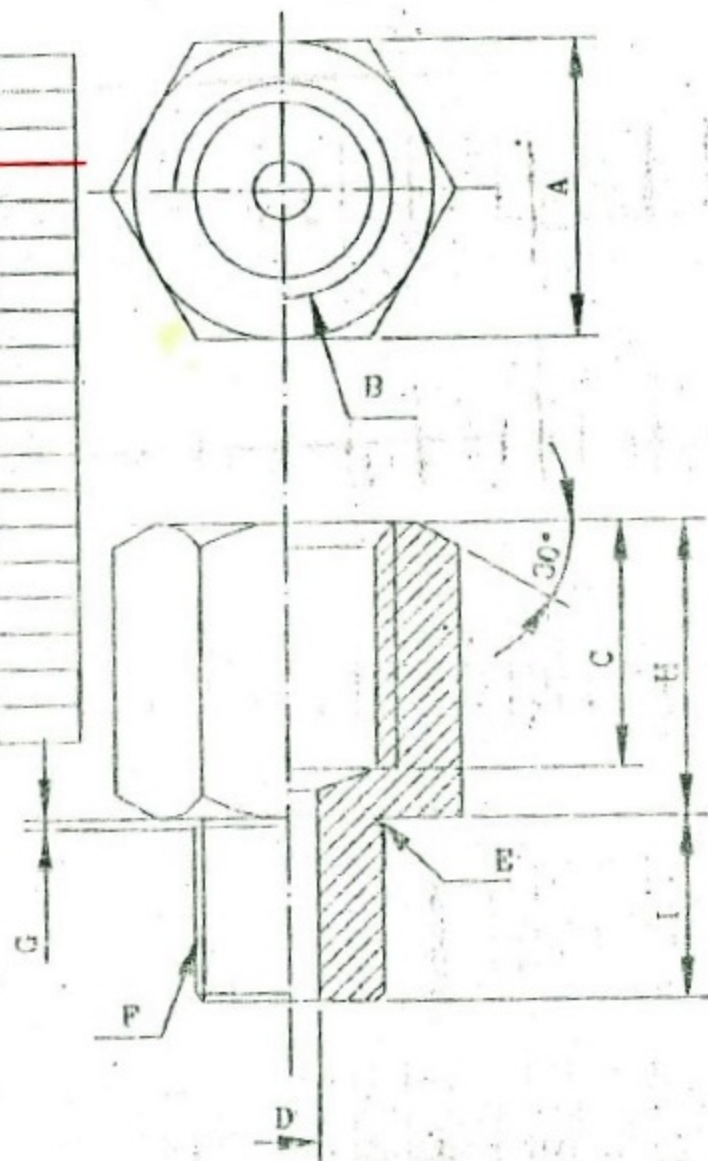


資料編號	a	B	c	d	E	F	G	H	I
C340-020-050	19	5/8-18UNF	8	ø10.0	ø13.5	M16*1.5	2.2	11	14
C340-020-070	14	1/8-27NPT	9	ø3	ø8.5	M10*1.0	1.3	14	10
C340-020-080	19	5/8-18UNF	8	ø10.0	ø12	M14*1.5	2.2	11	14
C340-020-110	19	5/8-18UNF	8	ø10.0	ø15.5	M12*1.5	2.2	11	14
C340-020-170	19	1/8-27NPT	9	ø8.5	ø13.5	5/8-18UNF	2.0	7	10
C340-020-210	18	1/8-27NPT	9	ø8.5	-	M12*1.0	-	12	12
C340-020-220	18	1/8-27NPT	9	ø8.5	ø12	M14*1.5	2.2	7	12
C340-020-230	19	1/8-27NPT	9	ø8.5	ø13.5	M16*1.5	2.2	7	12
C340-020-240	16	1/8-27NPT	9	ø8.5	-	M12*1.5	-	12	12
C340-020-250	22	1/8-27NPT	9	ø8.5	ø15.5	M18*1.5	2.2	7	12
C340-020-260	17	1/8-27NPT	9	ø8.5	-	1/2-20UNF	-	10	9
C340-020-300	17	1/8-28PT	9	ø3	-	M10*1.0	-	14	10
C340-020-340	19	M12*1.5	14	ø3	ø12	M14*1.5	2.2	17	12
C340-020-350	19	1/8-27NPT	9	ø8.5	ø13.5	M16*1.5	2.2	5	8
C340-020-370	19	1/8-27NPT	9	ø8.5	ø12	M14*1.5	2.2	5	8
C340-020-380	20	1/8-27NPT	9	ø8.5	ø15.5	M16*1.5	2.2	5	8
C340-020-380	14	1/8-27NPT	9	ø8.5	-	M12*1.5	-	12	12
C340-020-400	18	1/8-27NPT	9	ø6	-	M14*1.5	-	12	12



VER DESCRIPTION & CON NOTING

SHANGHAI JIAO TONG UNIVERSITY
TOLERANCE

LENGTH	ZONE	LENGTH	ZONE
0.5~3	±0.05	30~120	±0.15
3~8	±0.10	120~315	±0.20
8~30	±0.15	315~1000	±0.30

MATERIAL: 快削鋼 7
TREATMENT/FINISH: 本類
SCALE:
ANGLE PROJ. UNIT: mm A1
NAME

接頭

DESIGN: DRAWN: 2000/5/29 CHECKED: 2000.11.9 APPROVED: 2000.11.9 TOOLING NO: PARTS NO: c340-020-070 DRAW NO: