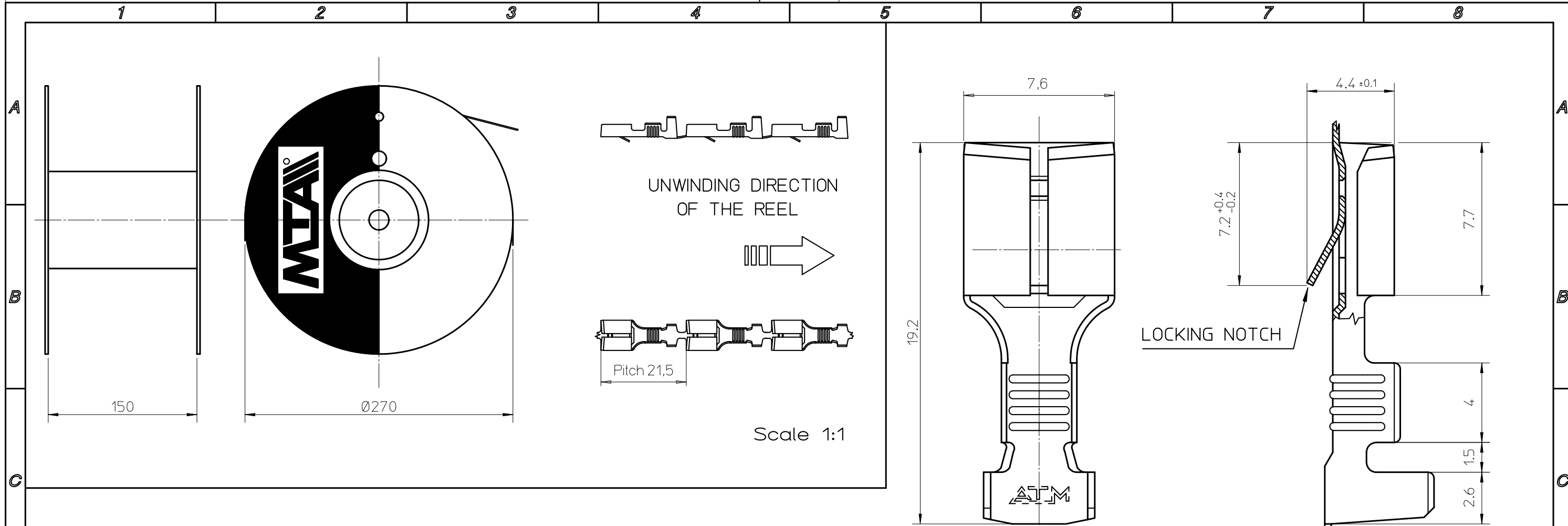
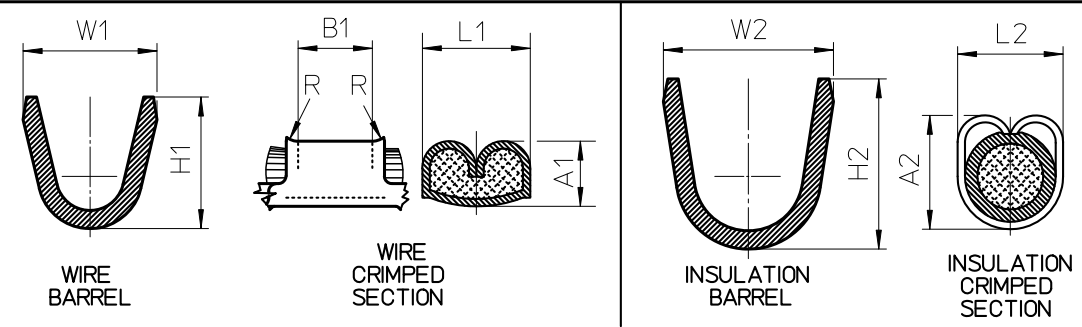


All proprietary rights reserved by MTA S.p.A. - This drawing shall not be reproduced, or in any way utilized, for the manufacture of the component or unit herein illustrated and must not be released to other parties, without written consent. Any infringement will be legally pursued.



UNCONTROLLED COPY
 in case of drawing updating/revision
 NO AUTOMATIC
 resubmission will follow

CRIMP STATEMENTS



VALUES OBTAINED USING A ---1 PRESS

MTA P/N	RATED CURRENT (A)	Wire sec. (mm ²)	CONDUCTOR				INSULATION				TEAR OUT FORCE (N)	
			H1	W1	A1 ±0.05	L1	B1	H2	W2	A2		L2
1101650	20	1	3.5	3.8	1.50	2.90	3.20	5.2	5.8	3.60	3.80	115
1301650		1.65			2.90	3.20	3.80			3.80	155	
1701650		1.70			2.90	3.20	3.80			3.80	195	
1701655		1.80			2.90	3.20	3.95			3.80	235	
1901650		1.80			2.90	3.20	3.95			3.80	235	

1901650	B0-240.014A	-	YES	LOOSE
1701655		Tin Plated	NO	REEL
1701650		Tin Plated	YES	REEL
1301650		-	YES	LOOSE
1101650		Tin Plated	YES	LOOSE
MTA P/N	DRAW N°	COATING	LOCKING NOTCH	PACKAGE

MTA	MTA P/N	1701650	Denom. FASTON TERMINAL F630 W/LOCKING NOTCH					
	Draw No.	B0-240.014A	Used for SECTION CABLE 1-2.5 sqmm					
Rel. Level	APPROVED	Draw for	CLIENT	Relevant Standard				
	Date	Name	Scale	Weight(g)	Lin.Tol.±	Ang.Tol.±	Material	CuZn
Draft	06/06/1996	L.NARRA	5:1	~0.65	0.5	2	Coating	SEE TABLE
Chk	16/07/2014	M.PASQUANDREA	A3	⊕	Dimensions in (mm)	Sheet 1/1	Color	
PQApp	22/07/2014	M.ROSSI						
App.	22/07/2014	M.PASQUANDREA						
5	REEL CONFIGURATION MODIFIED							

No.	Reason for Revision	Date	16/07/2014	Name	S.BEDUSCHI
-----	---------------------	------	------------	------	------------