



RDW

Vehicle Technology Division

20-09080/01

**THE NETHERLANDS
(N E D E R L A N D)**



COMMUNICATION

Concerning:

- approval granted
- ~~approval extended~~
- ~~approval refused~~
- ~~approval withdrawn~~
- ~~production definitely discontinued~~

of a type of device pursuant to Regulation number 7.

Approval number: E4-7R-02 7801

Extension number: 00

1. Trade name or mark of the device : JUST TOP
 2. Manufacturer's name for the type of device : JS-09303
 3. Manufacturer's name and address : Just Auto Accessories Company Limited
6F, No.2, Lane 163, Hsinyi Road, Panchiao 220,
Taipei Hsien, Taiwan, Republic of China
 4. If applicable, name and address of the manufacturer's representative : --
 5. Submitted for approval on : 1 March 2009
 6. Technical service responsible for conducting approval tests : KEMA Quality B.V.
 7. Date of report issued by that service : 4 May 2009
 8. Number of report issued by that service : 2125461-QUA/PHO 09-055-13
 9. Concise description :
- By category of lamp: A



P.O. Box 777
2700 AT Zoetermeer
The Netherlands

Tel. +31 (0)79 345 81 43
Fax +31 (0)79 345 80 43
www.rdw.nl

Vehicle Approval and Information

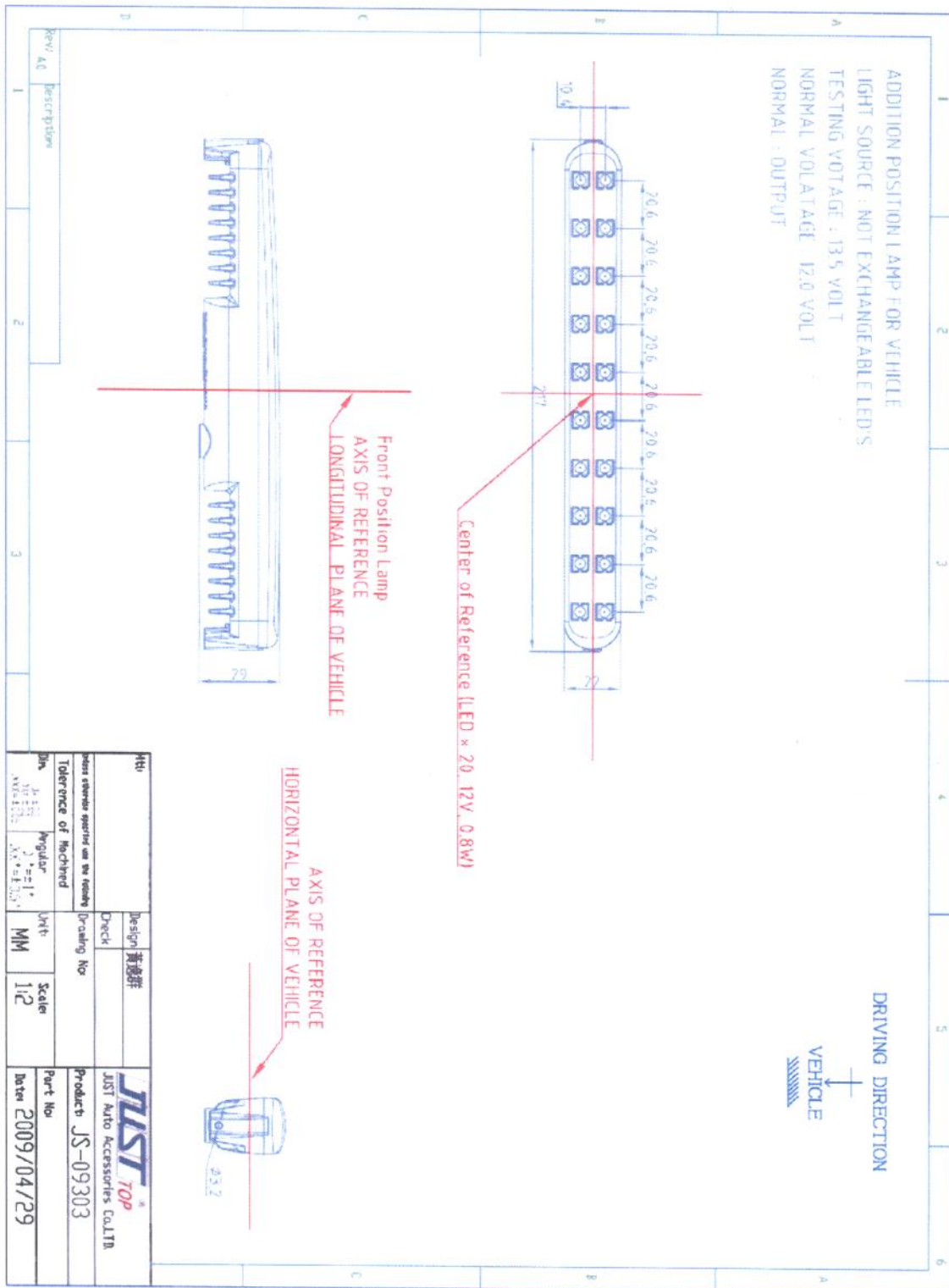
- For mounting either outside or inside or both : --
- Colour of light emitted : red/white
- Number, category and kind of light source(s) : 20 x non replaceable light source (LED)
- Voltage and wattage : LED: 12V; 0.8W
- Light source module specific identification code : --
- Only for limited mounting height of equal to or less than 750 mm above the ground : yes/no
- Geometrical conditions of installation and relating variations, if any : --
- Application of an electronic light source control gear/variable intensity control:
- (a) Being part of the lamp : yes/no
- (b) Being not part of the lamp : yes/no
- Input voltage(s) supplied by an electronic light source control gear/variable intensity control : --
- Electronic light source control gear/variable intensity control manufacturer and identification number (when the light source control gear is part of the lamp but is not included into the lamp body) : --
- Variable luminous intensity : yes/no
10. Position of the approval mark : See annexed drawing
11. Reason(s) for extension (if applicable) : --
12. Approval : granted/~~extended~~/~~refused~~/~~withdrawn~~
13. Place : Zoetermeer
14. Date : 12-MAY-2009
15. Signature



R. Kauerz

16. The list of documents deposited with the Administrative Service which has granted approval is annexed to this communication and may be obtained upon request.
- 1 Drawing No. JS-09303 dated 2009/04/29 (annexed)
 - Test report as mentioned in item 8





HTU	Design	黃應群	Check	Product	JUST TOP JUST Auto Accessories Co., Ltd
請於發單前請於本廠內 Tolerance of Machined	Drawing No		Scale	Part No	
Dim. 公差 ANGULAR ANGULAR	Unit	MM	1:2	Date	2009/04/29





2125461-QUA/PHO 09-055-13

Approval testing of a front position lamp trade
mark **JUST^{TOP}** (JUST TOP), type name
JS-09303

Arnhem, 4 May 2009
Author J.L. Walhout

By order of Just Auto Accessories Company Limited, Taipei Hsien, Taiwan.

author : J.L. Walhout 04-05-2009 reviewed : W. van Laarhoven 04-05-2009
B 11-05-04-05-2009 JLW approved : W. van Laarhoven (project manager) 04-05-2009



© KEMA Quality B.V., Arnhem, the Netherlands. All rights reserved.

It is prohibited to change any and all versions of this document in any manner whatsoever, including but not limited to dividing it into parts. In case of a conflict between the electronic version (e.g. PDF file) and the original paper version provided by KEMA, the latter will prevail.

KEMA Quality B.V. and/or its associated companies disclaim liability for any direct, indirect, consequential or incidental damages that may result from the use of the information or data, or from the inability to use the information or data contained in this document.

The contents of this report may only be transmitted to third parties in its entirety and provided with the copyright notice, prohibition to change, electronic versions' validity notice and disclaimer.



CONTENTS

	page
Summary	4
1 Application for approval testing	5
2 Examination	5
3 Results of examination	5
4 Supplementary remarks	5
Annex 1 Manufacturer's description	6
Annex 2 Drawing	7
Annex 3 Summary test results	9
Annex 4 Tables 1 up to 2 inclusive	10



SUMMARY

The tested samples of a front position lamp marked **JUST^{TOP}** (JUST TOP) type name JS-09303 were found to comply with the requirements of ECE Regulation No. 07-02.

1 APPLICATION FOR APPROVAL TESTING

On 14 April 2009, samples of a front position lamp, trade name **JUST^{TOP}** (JUST TOP), type name JS-09303, manufactured by Just Auto Accessories Company Limited. in TaipeiHsien, Taiwan were tested in the laboratory of ISOQA in Taichung, Taiwan. The front position lamp using 20 LED's emitting white light

A brief technical description and a drawing which were sufficiently detailed to permit identification of the model can be found in Annex 1 and 2 respectively.

The applicant desired an examination to check whether the front position lamp is in compliance with the requirements of the ECE Regulation No. 07-02.

2 EXAMINATION

The examination was carried out in accordance with the relevant clauses of the regulation concerned. The tests were performed taking into consideration the manufacturer's information concerning centre and axis of reference. For the photometric tests a test voltage of 13.5 V was applied.

The distance of measurement was 3.16 m.

3 RESULTS OF EXAMINATION

The results of the tests are summarised in Annex 3. Detailed results of the tests of the lamps are presented in Annex 4, tables 1 up to 2.

4 SUPPLEMENTARY REMARKS

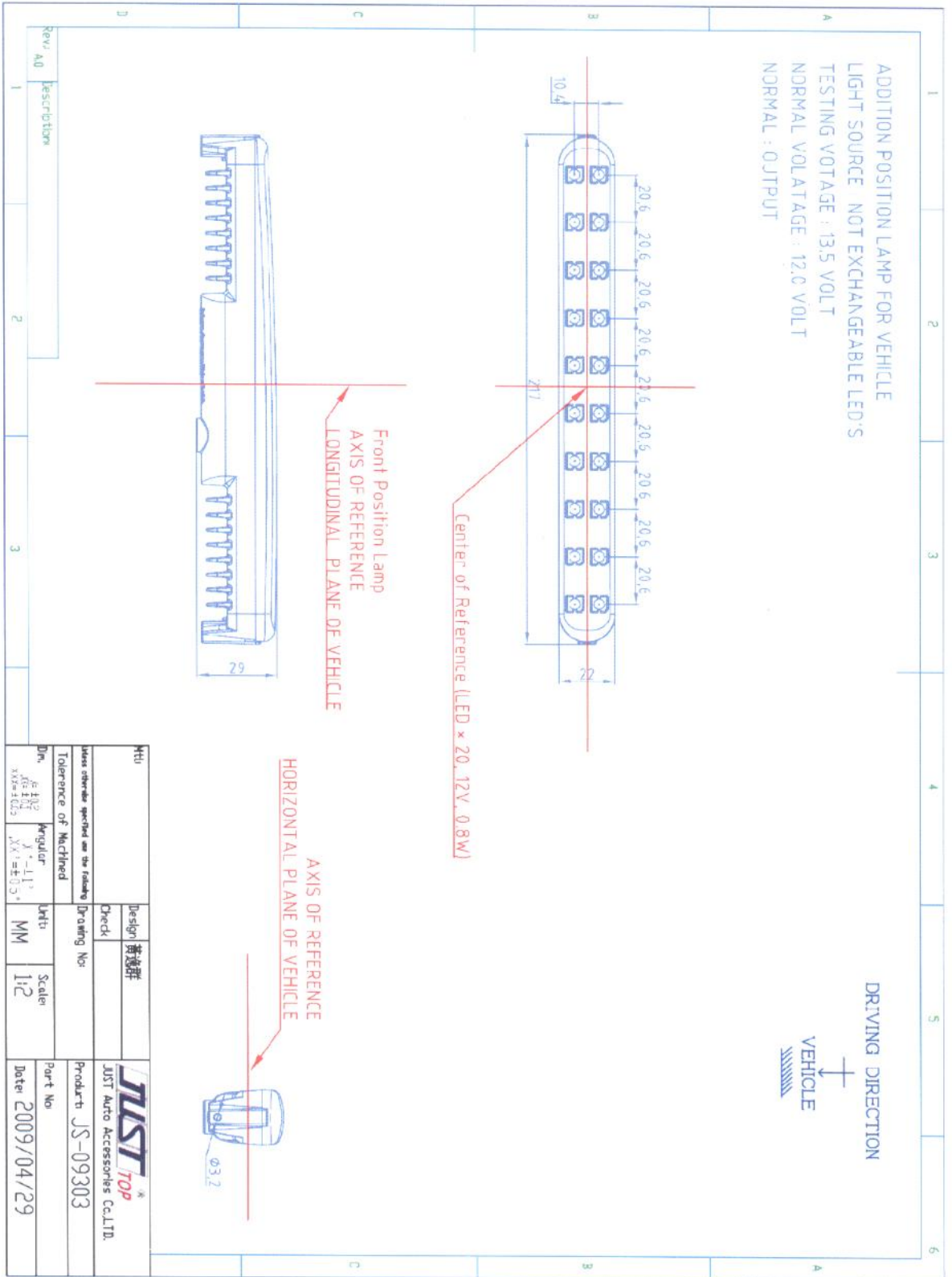
The approval number 7801 was assigned. The approval marking is shown in the drawing of Annex 2.

Information Document

of Model Number- JS-09303

Approval Number: 7801

Manufacturer		
Name	Just Auto Accessories Company Limited	
Address	6F, No.2, Lane 163, Hsinyi Road, Panchiao 220, Taipei Hsien, Taiwan, Republic of China	
Trade name or mark	JUST ^{TOP} (JUST TOP)	
Model Number	JS-09303	
Material of lens	PLASTIC	
Front Position Lamp (Reg. 7)	Category	A
	Light Source	LED × 20, 12V, 0.8W
	Color of light emit	White
	Color of lens	Clear

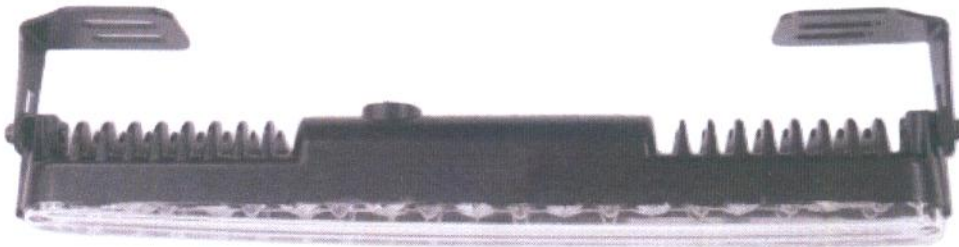




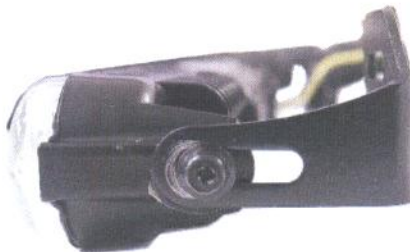
FRONT VIEW



REAR VIEW



TOP VIEW



SIDE VIEW

Examination of front position lamp JS-09303 carried out according to the relevant clauses of the regulation No. 07-02.

Clause No.	Subject of the relevant clause	Judgement of the device	Remark
3	1 trade name or mark	complies	
	2 space reserved for the approval mark	complies	
5	General specifications:		
	a intensity and colour of the light emitted	complies	see Annex 4
	b maintenance of satisfactory operation and of photometric characteristics	complies	by visual inspection only
	c field of visibility horizontal and vertical	complies	
	d No access to inner surface of the retro-reflectors	complies	
6	intensity of the light emitted	complies	see Annex 4 ¹
8	colour of the light emitted	complies	²

¹ The rest results show that even if one light source is failing, the lamp continues to meet the requirements.

² Front position lamp emitted white color x=0.3175 y=0.3298



Front Position Lamp (sample 1)

ISOQA

PHOTOMETRIC RESULTS

Program:	02 (2005.01.12)	ECE R 7 FrontPositionLamp1-2	
Front Position Lamp (assembly of two lamps)			
Name:	09-0169 JS-09303 S090933 for ECE R7 Front Position Lamp		
Number:	L090258		
Test distance:	3.16	Meas.-no.:	
Lamp type:	LED 13.5V		
Number:	LED		
Flux:	0.000 lm	Operator:	Lawrence
Voltage:	13.500 V	Date:	4/14/2009 12:37:45 PM
Current:	0.053 A	Set value:	Const. voltage
X-offset:	0.00°	Y-offset:	0.00°
Comment:			

ECE R 7_FrontPositionLamp1-2

Function	Min	Max	Value	H	V	N.O.K.
H - V(1min)	4	84	68.220	0.00°	0.00°	
H - V(30min)	4	84	67.660	0.00°	0.00°	
10U - 5L	0.8	84	33.030	-5.00°	10.00°	
10U - 5R	0.8	84	32.190	5.00°	10.00°	
5U - 20R	0.4	84	19.320	20.00°	5.00°	
5U - 10R	0.8	84	41.500	10.00°	5.00°	
5U - V	2.8	84	57.570	0.00°	5.00°	
5U - 10L	0.8	84	41.990	-10.00°	5.00°	
5U - 20L	0.4	84	19.850	-20.00°	5.00°	
H - 10L	1.4	84	48.890	-10.00°	0.00°	
H - 5L	3.6	84	62.340	-5.00°	0.00°	
H - 5R	3.6	84	61.620	5.00°	0.00°	
H - 10R	1.4	84	47.620	10.00°	0.00°	
5D - 20R	0.4	84	19.420	20.00°	-5.00°	
5D - 10R	0.8	84	41.530	10.00°	-5.00°	
5D - V	2.8	84	58.010	0.00°	-5.00°	
5D - 10L	0.8	84	42.570	-10.00°	-5.00°	
5D - 20L	0.4	84	20.720	-20.00°	-5.00°	
10D - 5L	0.8	84	36.450	-5.00°	-10.00°	
10D - 5R	0.8	84	35.960	5.00°	-10.00°	
Visibility	0.05	84	(0.210) 67.641	(79.80°) 0.10°	(1.00°) 0.00°	



Front Position Lamp (sample 2)

ISOQA

PHOTOMETRIC RESULTS

Program:	02 (2005.01.12)	ECE R 7 FrontPositionLamp1-2	
Front Position Lamp (assembly of two lamps)			
Name:	09-0169 JS-09303 S090934 for ECE R7 Front Position Lamp		
Number:	L090258		
Test distance:	3.16	Meas.-no.:	
Lamp type:	LED 13.5V		
Number:	LED		
Flux:	0.000 lm	Operator:	Lawrence
Voltage:	13.500 V	Date:	4/14/2009 2:43:16 PM
Current:	0.053 A	Set value:	Const. voltage
X-offset:	0.00°	Y-offset:	0.00°
Comment:			

ECE R 7_FrontPositionLamp1-2

Function	Min	Max	Value	H	V	N.O.K.
H - V(1min)	4	84	73.680	0.00°	0.00°	
H - V(30min)	4	84	73.070	0.00°	0.00°	
10U - 5L	0.8	84	33.220	-5.00°	10.00°	
10U - 5R	0.8	84	34.010	5.00°	10.00°	
5U - 20R	0.4	84	20.590	20.00°	5.00°	
5U - 10R	0.8	84	43.440	10.00°	5.00°	
5U - V	2.8	84	60.860	0.00°	5.00°	
5U - 10L	0.8	84	42.860	-10.00°	5.00°	
5U - 20L	0.4	84	19.820	-20.00°	5.00°	
H - 10L	1.4	84	50.740	-10.00°	0.00°	
H - 5L	3.6	84	66.600	-5.00°	0.00°	
H - 5R	3.6	84	67.360	5.00°	0.00°	
H - 10R	1.4	84	51.970	10.00°	0.00°	
5D - 20R	0.4	84	21.670	20.00°	-5.00°	
5D - 10R	0.8	84	46.090	10.00°	-5.00°	
5D - V	2.8	84	63.760	0.00°	-5.00°	
5D - 10L	0.8	84	44.380	-10.00°	-5.00°	
5D - 20L	0.4	84	20.020	-20.00°	-5.00°	
10D - 5L	0.8	84	34.780	-5.00°	-10.00°	
10D - 5R	0.8	84	36.400	5.00°	-10.00°	
Visibility	0.05	84	(0.390) 73.031	(80.00°) 0.10°	(15.00°) 0.00°	