

reflecta® x1-Scan

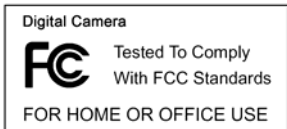


User manual

For customers in North and South America

For customers in USA

This device complies with Part 15 of the FCC rules. Operation is subject to the following two conditions:



- (1) This device may not cause harmful interference.
- (2) This device must accept any interference received, including interference that may cause undesired operation.

For customers in Canada

This Class B digital apparatus meets all requirements of the Canadian Interference-Causing Equipment Regulations.

For customers in Europe



"CE" mark indicates that this product complies with the European requirements for safety, health, environment and customer protection. "CE" mark cameras are intended for sales in Europe.

1. Name of parts



Note: This film scanner supports Windows XP and Vista via USB 2.0 only.

Please make sure your film negatives/mounted slides and cover trays are clean before inserting into the scanner as well. Dust or dirt from the negatives and cover trays will affect the quality of your scanned images.

We strongly suggest using a clean, dry, non-alcohol cotton swab or the cleaning brush that is included with your unit to insert into the film scanner slot and clean the glass surface periodically to produce a clear image.

2 How to install slides and film into the tray holder

a. Open the film holder as illustrated



b. Put a negative in the film slot as shown.

Note: Do not flip negatives, if flipped, the pictures will be scanned backwards.



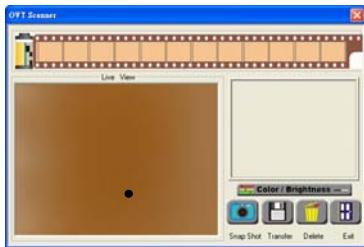
c. Close the film holder



Cleaning the dust from the film scanner lens:

Open the PhotoImpression 6 software as if you were about to **convert** a picture.

Do not insert any slides or negatives into the film **converter** slot. You will be able to see the dust that is on the lens from the PhotoImpression 6 live view window. (See the example shown below) Then you can use the cleaning brush to wipe the dust.



We strongly suggest using a clean, dry, non-alcohol cotton swab or the cleaning brush that is included with your unit to insert into the film scanner slot and clean the glass surface periodically to produce a clear image.

3. Installing the software and driver

To use the film converter you must install the film converter driver and ArcSoft

PhotoImpression 6 in advance.

- **Installing the driver.**

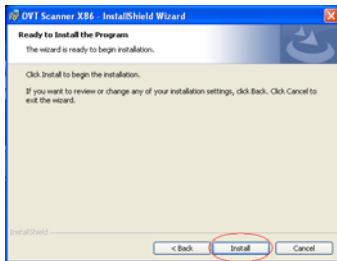
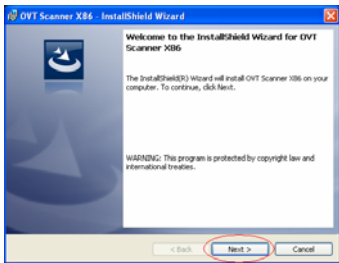
1. Turn on the computer.
2. Insert the installation CD into the CD-ROM drive and the installation CD menu will appear.
3. When you see the following screen, choose “Scanner Driver”.

Windows XP directions:

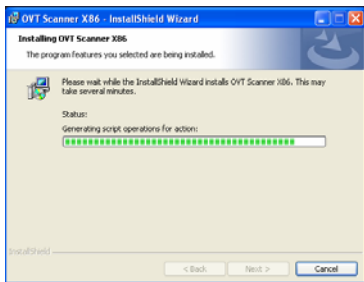
3.1. Click Next to start the installation process.



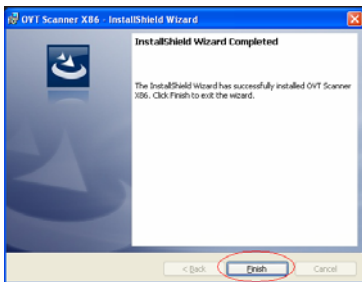
3. 2. Click Install.



3.3. Installation process will begin.

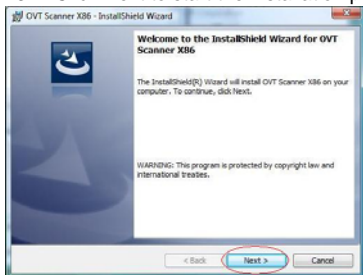


3.4. Once installation is complete. Click Finish.

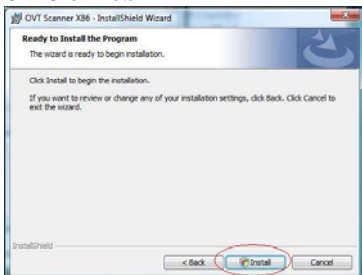


Windows Vista directions:

3.1. Click Next to start the installation process.

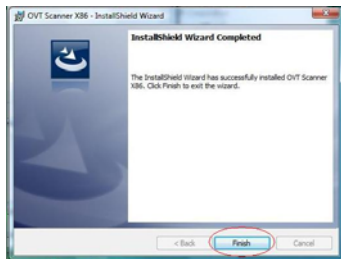


3.2. Click Install.



3.3. Installation process will begin.

3.4. Once installation is complete. Click Finish.



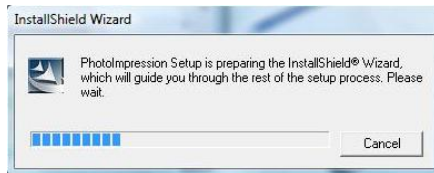
3.5. Take out the installation disk and restart the computer.

• Installing the software

1. Insert the installation CD into the CD-ROM drive and the installation CD menu should appear.
2. When you see the following screen, choose “**Arcsoft Software Suite**” to install the software.

Windows XP and Windows Vista directions:

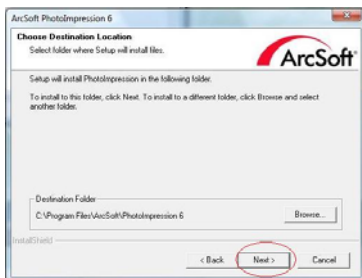
1. Select the language you wish to be displayed. Then click OK
2. Photolmpression will start the installation.



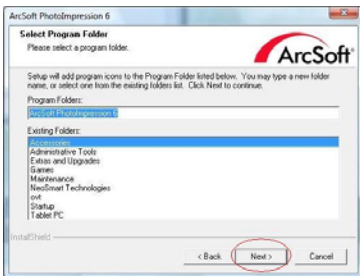
3. Click on Yes to agree to the terms and conditions.



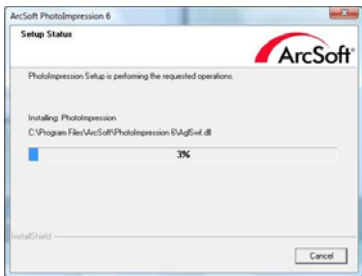
4. Click Next to have PhotoImpressions download into your Programs folder.



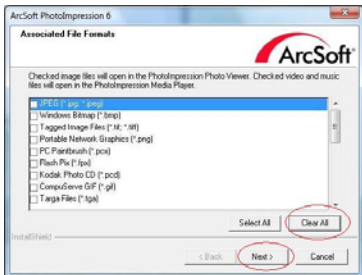
5. Click Next to continue.



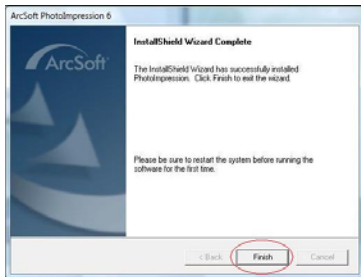
6. PhotoImpressions will start the setup process.



7. Once you get this to this screen select "Clear All" so that PhotolImpressions does not take over the files on your computer.



8. Click on Finish to complete and restart the computer.



9. The installed software will automatically create a "PhotolImpression 6" logo on your desktop. Restart the computer and remove the installation disk.

Note: If a "Code 10 error" appears on your screen when using the program, please do not unplug your device from the USB port of your computer. Please restart your computer and resume running the PhotolImpression program.

4. Connecting the film converter to your computer with the USB cable

Note: Please remove the slide or film tray before connecting the device to the computer.

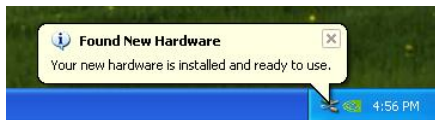
Once connected, the power LED light will be red. Please follow the steps below to synch up the hardware with the software on the computer using the Found New Hardware Wizard. Note: The Found New Hardware Wizard will only come up if the film converter is connected to a 2.0 USB port.

Windows XP directions:

1. Connect the film converter to the computer using a 2.0 USB port.
2. Do not insert the disk in to the drive
3. Found New Hardware Wizard will automatically look for the installed software



4. The hardware is successfully installed



Windows Vista directions:

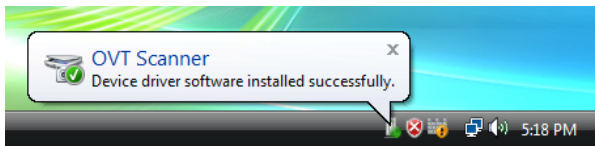
1. Connect the film converter to the computer using a 2.0 USB port.



2. Do not insert the disk in to the drive and click the first item.
3. The Found New Hardware Wizard will automatically look for installed software.



4. The hardware is successfully installed

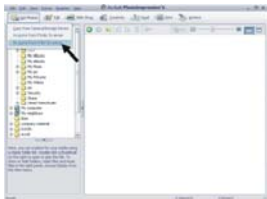


5. Using the slide and film converter.

Click on the “**PhotoImpression 6**” icon on the desktop. Follow the instructions to open the software.

1. Click on the “Get photos” icon on the appeared data interface.
2. Click on the “Acquire from Scanner” as Pic 1.
3. Then “Acquire from Scanner” UI will appear as Pic 2.

Pic1



Pic2



- 1 Select the location to save the images after scanning.
- 2 Adjust the image resolution based on individual requirement and then click “Acquire” icon
- 3 Click “Calibrate” for the first time operation or only when calibration is needed.

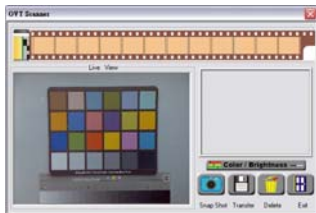
4. For first time users the converter will automatically calibrate.(as pic 3)

Pic 3

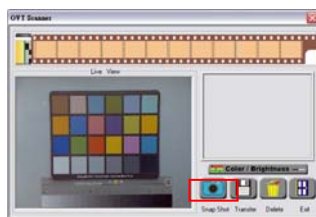


5. Previewed image will be shown in the preview area (as Pic 4). If the preview image is not accurately framed, you can micro-adjust the location of the film by hand moving the film/slide tray. Then previewed image will be adjusted according to your movement

Pic 4.

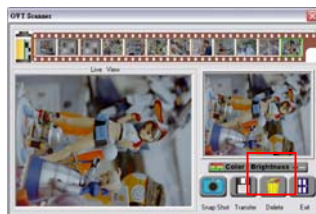


Pic 5.



6. Click "Snap Shot" (as Pic 5) on the PC software screen or press the "Copy" button on the film scanner. Up to 12 images can be scan before transferring them to your computer. If you scan a 13th image before transferring the images, you can find the information (as Pic6). Then press the transfer button to transfer or save selected pictures to your computer.

Pic 6

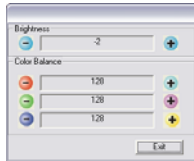


Note: 1.To ensure the best image quality, please allow about 5 seconds between snapshots and transfers for white balance enhancement.

2. Click Transfer to save the scan images displayed on the film strip to your computer. Three status messages will be display briefly for each image being transferred. If desired, click a thumbnail image which you do not want to save, and then click Delete to delete the selected image before clicking Transfer.

3. Color/Brightness Adjustment lets you change the colors if desired . This feature helps to achieve better results when scanning the film. You can click the Color/Brightness button (as Pic7) to adjust the colors and check the result of the compensation by viewing the image on the screen

Pic 7



Note: Please do not minimize the window of converting screen after transferring the pictures. If you want to see the scanned pictures, click EXIT/x and you will see the picture you scanned before. (Example as below)



6. Now you can start to edit the picture as you like:

First , click on the picture to select, then use the Arcsoft tools to edit the pictures.

- Main Menu

The Main Menu appears in the upper left corner of the workspace, many of the program's key options and controls are available in the Main Menu. To learn more about a particular menu item and the options and controls it contains, choose from the list below:

* File

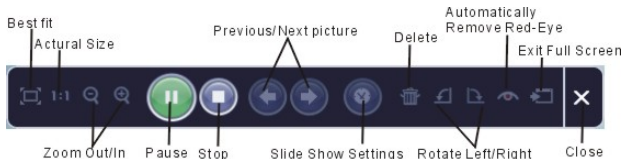
Scan for Media Files

Launches the Scan for Media Files dialog box that enables you to scan your computer for all photos, music and video files. This process creates a media library that helps the program perform as fast as possible. You can scan your computer in one of the following three ways:

- **Scan Primary Folders Only** - Scans folders most commonly used for storing media, such as My Documents, My Pictures and Desktop.
- **Scan All Folders** - Scans your entire computer for media (except Windows and Program Files folders).
- **Select the folders you want to scan** -Let's you choose the folders for scanning.

* View

Full Screen/Play (F4) Plays or displays the first selected file in full screen view.



- Main Buttons

* **Get Photos**

Acquire from Scanner

Here you can:

- Acquire images from connected TWAIN compliant devices such as scanners and some digital cameras.
- Assign names to image files as they are acquired (using today's date or a descriptive word).

How to acquire images from a TWAIN compliant device:

1. Select a scanner or other TWAIN device from the drop down list.
2. Choose the file format you want to use for the acquired images (JPG, BMP, TIF, PCX, TGA).
3. If you've selected JPG as the file format, select the image quality for the acquired images (Highest, High, Normal, Low). The lower the quality selected, the higher the level of compression applied.
4. Choose a destination folder for the photos by clicking "Browse" (folder icon) and navigating to the folder.
5. Choose a naming method (today's date or description). Enter a description if applicable.
6. Click "Acquire".

* **Edit**

Photo Editing Tools

The Photo Editing Tools module includes a complete set of photo enhancement, editing and

retouching controls.

The window can be stretched to provide a large size view of the active photo. Double click the module's tool bar to maximize the window to fill the computer screen.

In addition to the large photo workspace, the Photo Editing Tools module includes five distinct sets of controls:

Enhance

The Enhance function includes two types of controls:



Auto Enhance

Click "Auto Enhance" button to improve the overall quality of your pictures with a single click.

Manual Fix

For precise image enhancement control, adjust the Brightness, Contrast and Sharpen sliders.

How to enhance a photo manually:

1. Move the sliders to adjust the level of Brightness and Contrast and to make the image more Sharp.
2. Use the zoom slider to get a closer look at how the adjustment affects the photo.
3. Click "Apply" if you like the result. Click "Cancel" if you do not.

Color

This feature is designed to fix digital photos that have unnatural color or appear to dark. It's also great for fixing scanned versions of old prints that have faded or whose colors have

changed after many years of neglect.

How to fix the color of a photo:

1. Drag the color balance sliders to make the photo color appear more natural. Add red or yellow to make the photo warmer. Add blue or green to make the photo cooler.
2. Drag the Lighter/Darker slider to the left to reveal details hidden in a dark photo or to the right to make a faded photo look new again.
3. Click "Apply" if you like the result. Click "Cancel" if you do not.

Red-Eye

This feature makes it easy for you to fix all red eye - a common problem in flash photography.

There are two ways to fix redevye:



Auto Fix

1. Simply click the "Fix Red-Eye" button to automatically find and fix all red-eye.
2. If not all of the redevye is fixed, used the "Click to Fix" method.

Manual Fix

1. Use the zoom slider on the toolbar to zoom in on the photo.
2. Drag the small white box inside the zoom navigator to move over a red eye.
3. Place your cursor directly over the red eye and click.

4. Repeat the process until all red eyes are fixed.
5. Click "Undo" if you make a mistake or don't like the result.

Crop

This feature enables you to trim photos for dramatic effect or cut off the ugly/distracting parts of a picture.

How to use crop:

1. Choose the crop orientation (portrait or landscape).
2. Select a fixed proportion for the crop rectangle (4:6, 5:7, 8:10) or choose "Custom" if you want to use another proportion.
3. Resize the crop rectangle by clicking and dragging the red lines.
4. Move the crop rectangle into position by clicking and dragging inside the red box.
5. Click "Crop". The area inside the rectangle will be kept, the area outside will be trimmed away.
6. Click "Undo" if you make a mistake or don't like the result.

Straighten

This feature enables you to fix photos that appear to be tilted.

How to use Straighten:

1. Move the slider (or click the rotate buttons) until the photo appears straight.
2. Use the superimposed grid lines for vertical and horizontal reference.
3. Click "Apply" if you like the result. Click "Cancel" if you do not.

Blur Background

This feature can be used in a subtle way -- to tone down un-important background details, or for dramatic effect -- by making the main subject of a photo pop out of the picture.

How to use Blur Background:

1. With your cursor, trace a line around the person or object you want to stand out. When you release the mouse button, the area outside the traced line will become slightly blurred.
2. Drag the first slider to make the transition between the blurred and non-blurred area sharp or smooth.
3. Drag the second slider to increase or decrease the amount of blur.
4. Click "Apply" if you like the result. Click "Cancel" if you do not.

Saving Your Results

When you're done editing a photo, click Save As to save your results. You can choose to overwrite the original file or save a new one.

Click "Close" to exit the Photo Editing module.

Retouch



Healing Brush

The Healing Brush is good for fixing dust, scratches and removing skin blemishes.

How to use the Healing Brush to fix a skin blemish:

1. Establish a source point for the Healing Brush by holding the Shift key and clicking on an area of the skin that is close in color and texture to the area you want to heal.
2. Use the zoom control to zoom in on the blemish.
3. Adjust the size of the healing brush so the cursor (circle) is only slightly larger than the blemish.
4. Paint over the blemish. The area will be healed.

Click "Undo" if you make a mistake or don't like the result.



Clone

The Clone tool is good for removing unwanted elements from a photo. It can also be used for fun effect, like moving a nose from one person to another.

How to use the Clone tool to remove a telephone pole from the background of a photo:

1. Establish a source point for the Clone tool by holding the Shift key and clicking on an area of the sky that you want to use to paint over the telephone pole.
2. Adjust the brush size so the cursor (circle) is only slightly larger than the widest part of the telephone pole.
3. Click and hold your mouse button and carefully paint over the telephone pole. Do not release the mouse button until the job is done. The sky will be cloned into place.

Click "Undo" if you make a mistake or don't like the result.



Lighten/Darken

The Lighten/Darken tool is good for adjusting specific areas of a photo.



Smudge

Simulate the smearing of wet paint. Please click and drag the sliders below to change the brush size and hardness.



Sharpen

Sharpen blurry areas. Please click and drag the sliders below to change the brush size and transparency.



Blur

Smooth out rough areas. Please click and drag the sliders below to change the brush size and intensity.



Paint Brush

Lets you "paint" on your image when you click and drag the mouse. Please click and drag the sliders below to change the brush size and transparency.



Line

Draw a straight line in the photo. Please click and drag the sliders below to change the line width and transparency.



Eraser

Simulate an eraser, removing the image painting by paintbrush and line tools from your photo. Please click and drag the sliders below to change the eraser size and effect.

Saving You Results

When you're done, click "Save As" button to save your results. You can overwrite the original file or save it as a new one. Or click "Cancel" to exit without saving.

Click "Close" to exit the Photo Editing Module.

Note: For more detailed information, please refer to the [Help] of the program.

7. Specification:

Interface:	USB 2.0 only
Image Sensor:	1/2.5" inch 5 mega CMOS sensor (5,174,400 pixels)
Lens:	F no.= 2.0, 4 Glass elements, Half-field Angle=15°
Frame Rate (Max.):	5M(2592x1680) 2 fps
Focus Range:	Fixed focus
Exposure Control:	Automatic
Color Balance:	Automatic
Scan high resolution	5M equal to 1,800 dpi (enhances to 3,600 dpi via interpolation)
Data Conversion	10 bits per color channel
Scan Method	Single pass
Light Source	Back light (3 white LED)
Power:	Powered from USB port
Dimensions	90mm(H) X 90mm(W) X 165mm(L)
Software	Arcsoft PhotoImpression 6 included
Language	English, French, German, Italian, Spanish, T.C,S.C ,Japanese
Operating Systems	Windows XP SP2, Windows Vista (32/64-bit) *512 MB of RAM or higher (recommended), 800 MB of available hard disk space or higher (recommended) Actual requirements may vary based on your system configuration and the applications and features you choose to install.

System Requirements

Required OS: Windows XP (SP2) / Windows VISTA

Minimum memory (RAM): 512MB or higher (recommended)

Minimum free hard driver space: 800 MB or higher (recommended)

Minimum processor type: Pentium 4

Minimum processor speed: 1.8 GHz

Required computer ports: USB 2.0

Required disk drive (CD or DVD): CD

Required disk driver speed (CD or DVD): 48X

Minimum video display requirements: NO

Minimum sound requirements: NO

Internet connection is required: NO

Type of internet browser required: NO

Minimum Quick Time Version: NO

Windows Media Player: NO

Minimum Direct X version: Direct 9.0

Other Minimum required pre-installed software: ArcSoft PhotoImpression6

Other Minimum required components: NO