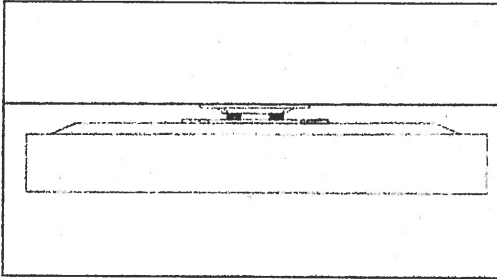
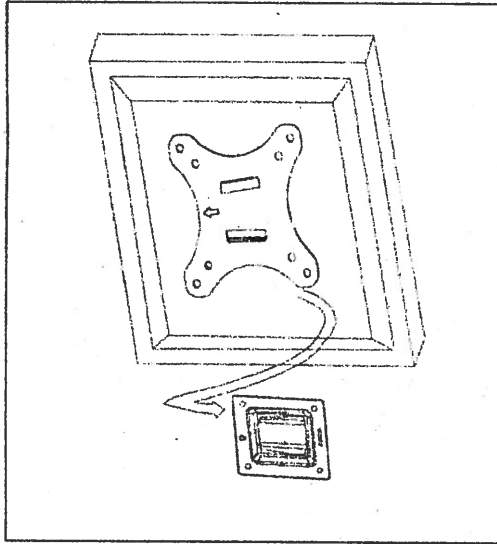


the mounting plate to the back of your LCD with the arrow upwards.  
4. Do not over-tighten the screws.

### Step 3 – Final Installation and Operation

#### Final Installation

1. To complete the installation, simply slide the arm piece onto the wall plate.
2. Before you finish your installation, please make sure both arrows on wall plate and TV plate are upward.



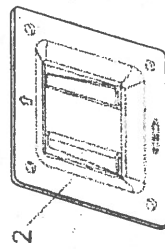
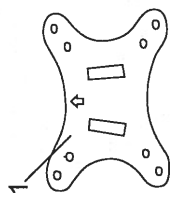
# LCD MOUNT INSTALLATION INSTRUCTIONS

This mount is designed for secure installation of LCD displays up to 18kg(40lbs) in weight.

#### Warning Statements

<b>Warning</b>	The wall structure must be capable of supporting at least a maximum weight of 18kg(40lbs). If not, the wall must be reinforced. Proper installation procedure by a qualified service technician, as outlined in the installation instructions, must be adhered to. Failure to do so could result in serious personal injury, or even death.
<b>Warning</b>	Safety measures must be practiced at all times during the installation of this product. Use proper safety gear and tools for the installation procedure to prevent personal injury.
<b>Warning</b>	Prior to the installation of this product, the installation instructions should be read and completely understood. The installation instructions must be read to prevent personal injury and property damage. Keep these installation instructions in an easily accessible location for future reference.
⚠	A secure structure must support the weight or load of the display. When mounting to a wall that contains wooden studs, dead center of the wooden stud must be confirmed prior to installation.
⚠	Do not install on a structure that is prone to vibration, movement or chance of impact. Failure to do so could result in damage to the display and/or damage to the mounting surface.
⚠	Do not install near heater, fireplace, direct sunlight, air conditioning or any other source of direct heat energy. Failure to do so may result in damage to the display and could increase the risk of fire.
⚠	At least two qualified people should perform the installation procedure. Injury and/or damage can result from dropping or mishandling the display.
⚠	Recommended mounting surfaces: wooden studs and solid-flat concrete. If the mount is to be installed on any surface other than wooden studs, use suitable hardware (which is commercially available).

**Parts Included:**



No	Qty	Name
1	1	LCD plate
2	1	Wall plate
3	4	M4x12 bolt
4	4	M4x30 bolt
5	4	M4 Lock washer
6	4	M4/M5 Spacer
7	4	M6x50 Dry Wall Screw
8	4	Concret anchor



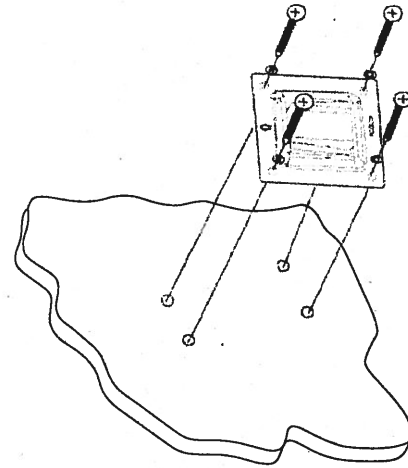
**Tools Required:**

- ✓ Phillips Head Screw driver
- ✓ Stud finder for drywall installation
- ✓ Electric drill and 5/16"(8mm) masonry bit for concrete/brick installation

**Step 1 – Mounting the Wall Plate**

**Wood Stud Installation**

**Note:** Using a wood stud finder, locate the stud centers behind the wall. Once found, make a pencil marking on the center of the wood studs. Once the mark is made, it is



**strongly recommended that a pilot hole be drilled with a 1/8" drill bit.**

1. Place the wall plate against the wall with the arrow upwards.
2. Secure the wall plate using two wood screws (7).
3. Using the bubble level system , carefully adjust the wall plate until it is level.
4. Attach the remaining two wood screws into the wall plate and tighten.

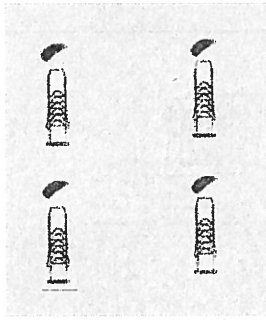
**Concrete/Brick Installation**

**Note: 5/16"(8mm) anchor must be used for concrete installation. They can be purchased at your local hardware store.**

1. Place the wall plate against the wall with the arrow upwards.
2. Level and mark with a pencil the four mounting points found on the wall plate.
3. Next, drill four holes using an electric drill and 5/16"(8mm) masonry bit
4. Insert the anchors into the holes that were drilled in the wall.

**Note: If necessary, use a hammer to lightly tap each anchor into place so that they are flush with the wall.**

5. Once the anchors are in place, put the wall piece back over the concrete anchors.
6. Using a screw driver, attach the back plate by threading the four screws into the anchor which has been recessed into the wall.
7. Make sure all screws are snug, but be careful not to over-tighten them.



**Step 2 – Attaching the TV plate to the LCD**

1. Determine the mounting hardware that is to be used.
- 2 If your LCD has a flat back, use the M4x12mm Phillips Head Screws (3) and Lock washer (5).

**Note: If your LCD has a recessed back, use the longer M4x30mm Phillips Head Screws (4), Lock washer (5) and 3/4" spacers (6).**

3. After you have determined the appropriate screws, use them to attach

