

Impact-VCB-e

Quick Installation Guide for Windows

Hauppauge Computer Works Inc.
Corporate Headquarters:
91 Cabot Court
Hauppauge, NY 11788
Tel: 631.434.1600
Fax: 631.434.3198
Tech Support: 631.434.3197
Email: support@hauppauge.com
www.hauppauge.com

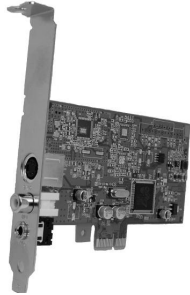
Hauppauge Digital Asia Pte. Ltd.
1093 Lower Delta Road #04-05, Tiong Bahru Industrial Estate
Singapore 169204
Tel: +65 62769163
Fax: +65 62769167
Email: support@hauppauge.com.sg
www.hauppauge.com.sg

Hauppauge Computer Works UK, Ltd
Crown House, Home Gardens
Dartford, Kent DA1 1DZ
United Kingdom
Tech Support: +44 (0)203 405 1717
Email: support@hauppauge.co.uk
www.hauppauge.co.uk

Hauppauge Computer Works GmbH
Ohlerkamp 14
41069 Mönchengladbach
Deutschland
Tech Support: +49 (0)2161 694 88 40
Fax: +49 (0)2161 694 88 15
Email: info@hauppauge.de
www.hauppauge.de

Contents of the Package

- Impact-VCB-e video capture PCI-E board
- WinTV v8 installation CD with serial number on the sleeve
- Half Height bracket for low profile system



Please keep the serial number in a safe place, as it will be required for future installations.

How the Impact-VCB-e works

Impact-VCB-e is a Windows video capture PCI Express card. It can be used for digitizing and compressing video from video cameras, video tape recorders, set top boxes and other devices which create analog video signals.

The WinTV v8 application software is included with Impact-VCB-e:

It is used for displaying live video on your PC screen and to create video recordings. When recording live video with the WinTV v8 application, Impact-VCB-e creates a .TS (transport stream) file. Using options in the WinTV v8 application, you can also create .MPEG files. Impact-VCB-e is based on a Windows WDM capture driver, which will be compatible with most video applications which use WDM capture devices.

1

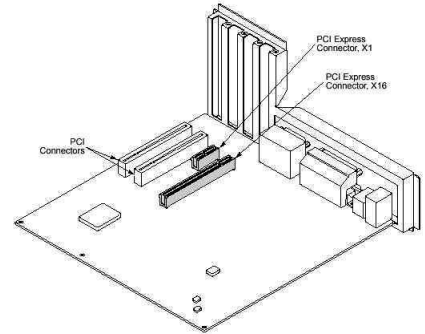
Installation Overview

1. Install the Impact-VCB-e board in your PC and connect AV cables.
2. Install Impact-VCB-e Windows device driver.
3. Install the WinTV v8 application.
4. Begin setting up WinTV v8.
5. Using the WinTV v8 Application

1. Install the Impact-VCB-e board and connect AV cables

To install, switch off the computer and remove the computer cover. The manufacturer of your PC supplies instructions on removing the PC cover.

- Locate a free PCIe slot (a short slot). Unscrew and remove the metal cover plate which covers the back of the empty slot.
- Plug the Impact-VCB-e board into the PCIe slot, and screw the board's metal cover plate to the PC's chassis.
- Connect your A/V source (Composite or S-Video and audio) to the Impact-VCB-e board.



Note: Your PC could be damaged by electrostatic discharge. Avoid this by contacting the earthed chassis of your PC, before you open it or touch the PCIe card.

Note: If you are using a low profile computer or chassis, you can replace the full height bracket on the Impact-VCB-e with the supplied half height bracket to fit into your low profile systems chassis.

2. Install the Impact-VCB-e Windows device driver

Note: It is recommended to disable your anti-virus software for the duration of the software installation.

Turn ON your PC and allow Windows to load fully. Insert the WinTV Installation CD-ROM in your PC's CD-ROM drive. The "Hauppauge WinTV Installation CD" window will appear on the screen. Select your preferred language.

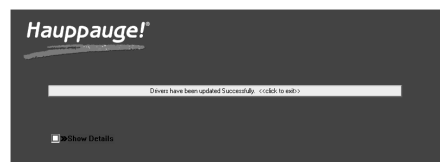


Note: If the CD does not autorun, navigate to the CD and run the 'Setup' file.

2

Click the button labeled **Step 1: Install Drivers**. A blue screen will open and begin installing the drivers for the Impact-VCB-e.

Once the drivers have installed, click the button labeled **Drivers have been updated Successfully**. <<click to exit>>.



3. Installing the WinTV v8 Application

Note: An Internet connection is required for software activation.

Click the button labeled "Step 2: Install WinTV v8". The setup application will then open. Click Next.

In the window titled "Activation required" click on the button "Enter Serial Number".

In the new window, enter the serial number from the sleeve of the Installation CD ROM and click OK.

Follow the instructions on the screen. It is recommended to use the default location for the program and data directories.

The setup will then install the application software components.

Once complete, click OK, then Exit.

After the installation you will find a **WinTV 8** icon on your desktop, and a "Hauppauge WinTV" folder in the Windows Start menu.

Note: The latest driver updates are available at: www.hauppauge.com



3

4. Begin setting up WinTV v8



After the installation is complete, you will need to configure your AV input on WinTV v8 as part of the initial setup.

Double click on the WinTV v8 icon on your Windows desktop.

When you run WinTV for the first time, the Device Setup Wizard appears.

Select "External inputs (Composite/S-Video)" and click *Next* to continue.

You will be presented with the option to add a Composite and S-Video Input. Select your country and click *Next*.

If you wish to connect a source not normally designed for operation in your country, you can configure the Video Format manually from the drop down list. Change the value from "AUTO".

Note: PAL is the commonly used format in Europe/Asia. NTSC is the broadcast format used in North America.

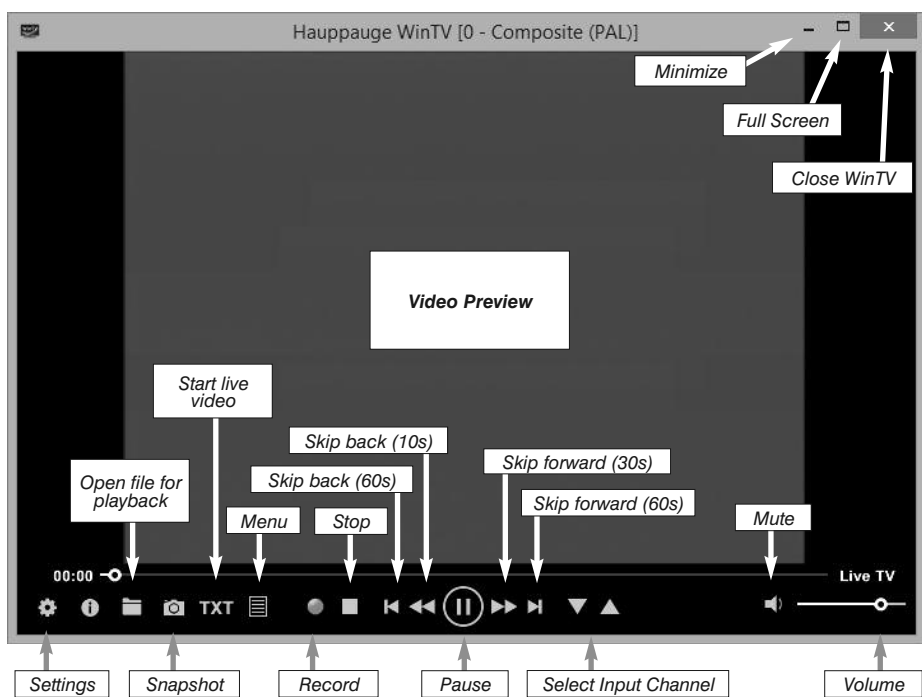
Note: To run the Device Setup Wizard at a later time, click on the **WinTV Settings** button (gear icon), and select the **Devices** tab. Select the **Impact-VCB-e** device and click on "Tuner Setup".



4

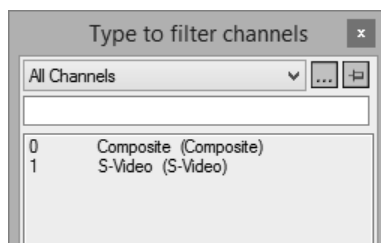
5. Using the WinTV v8 Application

WinTV v8 features include live video, recording and pausing live video, a scheduler and a video player where you can playback recordings in a window or full screen.



Select input source

Click on the Menu button and select "Find Channel" from the context menu. Double-click on the entry "Composite (Composite)", if your video source is connected to the yellow RCA connector, or "S-Video (S-Video)", if it is connected to the black 4-pin Mini-Din connector. You should now see live video from your video source and hear the audio.



Record video

- To record the video, click on the **Record** button. A filename is automatically generated and the video recorded to hard disk.
- To finish the recording, click the **Stop** button.

Location of recordings

By default the recorded video files are saved in **C:\Users\Public\Videos**. This can be changed in the WinTV Settings on the **Capture** tab.

Recorded Video Formats: .TS or .MPG

The default recording format is .TS (transport stream). If you have a video editing program that requires files of the type MPEG, open the WinTV Settings, click the "Advanced Options" tab and set "Auto convert to MPG". Your recordings will now automatically be converted into an .MPG file after the recording is finished.

5

Play recorded file

To play back a recorded file in WinTV, click on the folder button and select the file to play.

Image Capture

To capture still images from video, click the 'Snapshot' button. The configuration of the formats for still image capture is in the **Capture** settings. To configure, click the **Settings** button, then click on the **Capture** tab. You will see the settings for image capture under **Snapshots**. You can choose between BMP and JPEG formats. The format of the file name will be: capture_date_time.jpg

Eliminate delay of video

By default the video in the preview window is displayed with a delay of 1 to 2 seconds, because it is buffered onto the hard disk. If the delay is not desired, you can turn it off. In WinTV click on the **Settings** button and select the "Advanced Options" tab. Set the check mark on "Use Game Mode for analog". Close the WinTV application and restart Windows.

"Always On Top" Mode

In this mode, the WinTV application window will remain in view over any other applications even if it is not selected. To turn on, select Stay On Top from the context menu (or press ALT + O). To turn off, select this option again.

The Scheduler

The Scheduler allows you to record a video at a certain date and time.

The Scheduler lists all scheduled recordings added or any manual recordings that have been set. From here you can manually Add or Delete these schedule entries. The Cancel button allows you to terminate a currently recording program.

To schedule a recording, click on the **Add button**. You will need to set the following information:

Name: The name of your recording task (this does not specify the filename of the recording).

Channel: Choose the input channel to record.

Start Time: Set to the desired start time.

Duration: The length of the recording, using the arrows or by the keyboard.

Recurrence: You can choose to have the recording repeat Once, Daily or Weekly. If you select the Weekly option, select the day you wish have the show recorded on.

Start Date: The default is the current date.

End Date: If you have selected the *Daily* or *Weekly* option, you can specify the date at which to stop this task.

Once all the information is set, click **Record** to confirm.

Note: The WinTV application does not have to be running for a Scheduled Recording to work, but your PC will need to be either turned on, in Standby or in Hibernate Mode. All scheduled recordings are performed in the background by a task called "WinTVRec.exe".



6

Settings

Click the **Settings** button to open the WinTV Settings window. The settings are divided into several tabs.

General: Select the language of the user interface. You can also specify the video renderer to be used and the TV shape.

Capture: Specify where the recordings, pause files and snapshots are stored.

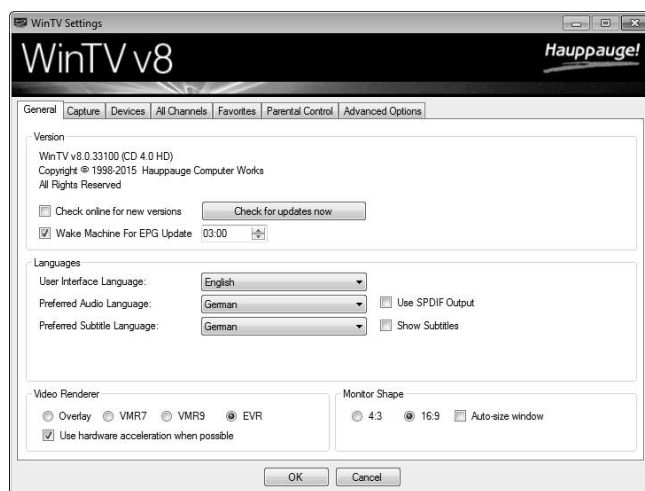
Devices: To configure the video inputs using the Device Setup Wizard, select the Impact-VCB-e device and click on **Tuner Setup**.

All Channels: You can enable or disable channels with the select box in the first column. The right click context menu allows you to select all channels, to delete the selected channel(s), to watch the selected channel or to display details about the channel.

Favorites: Here you can define groups of your favorite channels.

Advanced Options: From this menu you have options for:

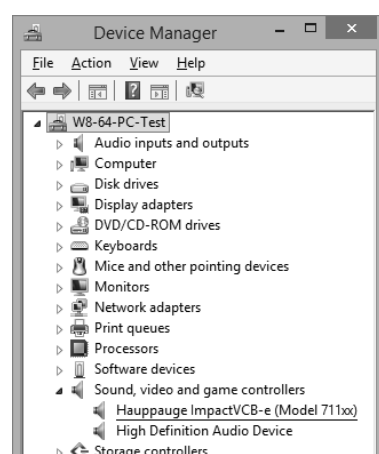
- Automatically starting TV when WinTV v8 opens
- Disable the Now/Next channel information
- Disable any On Screen Display graphics
- Auto convert the standard .TS recordings to the .mpg format (SDTV only)
- Enable Game Mode to in case you have connected a game console to the A/V input, and want to eliminate the delay when showing live video.



Troubleshooting

Checking the Device Driver

To check if the device driver is installed correctly, open the Control Panel, click on System and select Device Manager. In the category "Sound, video and game controllers" you should see a "Hauppauge ImpactVCB-e (Model 711xx)" entry without any exclamation mark.



7

Some notes on system compatibility

For recording analog video you need a P4 2.8 CPU or higher speed. In some cases, either a faster processor or more graphics memory might be required. Slow or jerky video indicates system performance problems.

Not getting proper display of video

Improper display or distorted video at the bottom of the display area can be caused by VGA overlay or video buffering, in your PC or laptop: a graphics system which cannot keep up with the high data rates or video overlay. Many times, improving the performance of the graphics display will fix the improper video display analog TV. Here are some tips on improving graphics performance:

- Use the latest graphics driver: graphics drivers are often 'tweaked' to improve performance, especially the built-in graphics on laptops. Check the Microsoft Windows update site to download the latest graphics driver for your computer. Or check your computers manufacturer website for the latest graphics driver.
- In the WinTV v8 Settings menu (click the "gear" icon), in the **General** tab change the Video Renderer. This is used to change the display mode of a graphics card for TV watching. This does not affect any other Windows program. The default mode used by WinTV is EVR. EVR uses your graphics card to move the video information into the graphics memory. You can try to select VMR 9 instead. Changing the Video Renderer requires a restart of the application to take effect.

Uninstalling the WinTV driver and applications

Run the hwcLEAR.exe from the installation CD. Select OK. A black screen will briefly appear and once it has disappeared the software will have been removed.

If no video is displayed

A common cause, why no video is displayed, are incorrect cable connections.

For example: When connecting a video recorder with a SCART-to-RCA adapter labeled "Video In", that is used to bring video into the video recorder, there will be no video in WinTV, as the video signal has the wrong direction. You must use a SCART-to-RCA adapter labeled "Video Out" to connect to the Impact-VCB-e.

If no video is displayed in WinTV v8:

- Make sure the video source is switched on.
- Make sure you are using appropriate cables to connect your video source.
- Make sure the correct video channel is selected in WinTV v8 ("Composite" or "S-Video").
- Make sure the video format that was set for the selected video channel matches the video format of the actual signal, for example PAL or NTSC. You can add video channels with certain video formats in the WinTV Settings on the 'Devices' tab. Select the "Impact-VCB-e" device and click on the "Tuner Setup" button.

Waste Electrical and Electronic Equipment (WEEE): The device may not be disposed of with household rubbish. This appliance is labeled in accordance with European Directive 2002/96/EG concerning used electrical and electronic appliances (Waste Electrical and Electronic Equipment - WEEE). The guideline determines the framework for the return and recycling of used appliances as applicable throughout the EU. To return your used device, please use the return and collection systems available to you.

FCC Statement FCC ID: H90WINTV

CE Statement: This equipment has been tested and complies with EN 55013, EN 55020 and IEC 801-3 part 3 standards.

CAUTION: Changes or modifications not expressly approved by the party responsible for compliance to the FCC Rules could void the user's authority to operate the equipment. Supplementary Television Broadcasting Receiving Apparatus - Appareils supplémentaires de réception de télévision, Canada. Nordic note: Ma kun tilkoples kabel-TV nett via galvanisk isolator.

8