

Easy CAP Video Adapter with Audio

Quick Installation Guide

Overview

● The Easy CAP USB 2.0 Video Adapter with Audio, it can capture High-quality video and audio file direct by USB 2.0 interface without sound card. However, the installation is very simple and the external power is unnecessary. Solution for laptop, we have enclosed the professional video editing software Ulead Video Studio SE DVD then provide best editing function for you. Video Studio is video-editing software that makes editing your movies as fun as shooting them. The new Video Studio Movie Wizard helps novice users finish stylish movies in only three steps. Share finished projects on DVD, tape, the Web, and mobile devices. High-speed rendering and real-time performance mean less time waiting and more time creating. By the way, you can create many special effect and clip video files...etc.

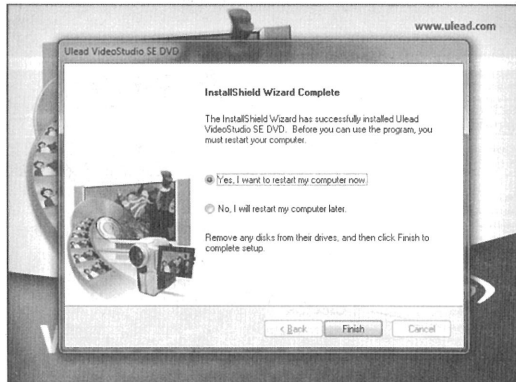
Key Features

- Include Professional and easy to learn & used video editor software: Ulead Video Studio SE DVD
- Popular USB 2.0 interface and not need other power
- Capture Video & Audio through USB 2.0 interface
- Support Brightness, Contrast, Hue, and Saturation control
- The dimension suitable that is easy to carry
- Could capture audio without the sound card
- High plug & play
- Support For All Formats: record in DVD+/-R/RW, DVD+/-VR, and DVD-Video
- Applying to internet conference / net meeting

Specification

- Complies With Universal Serial Bus Specification Rev. 2.0.
- Supports NTSC, PAL, Video format
- Video input: One RCA composite, One S-Video.
- Audio input: Stereo audio (RCA)mm
- Dimension (L)88mm x (W)28mm x (H) 18mm
- USB bus power
- Supports high quality video resolution
NTSC: 720 x 480 @ 30fps
PAL: 720 x 576 @ 25fps

Please insert the "Software CD" into your CD drive. Select your language for the installation and click "Install VideoStudio 8". And click "Next" or/and "Install".



You need enter user name and serial number (you can find the serial number on driver CD bag).



Click "finish" to complete setup, restart your computer if needed, to start the Video Studio application, and enjoy your digital life by use our products.

System Requirements

- USB: Compliant USB 2.0 free port
- OS: Windows 2000, XP / Vista / Win 7
- CPU: Pentium III 800 above
- HD: 600 MB of available hard drive space for program installation, 4 GB+ hard drive space for video capture and editing
- Memory: 256MB of RAM
- Display: Windows-compatible display with at least 1024x768
- Sound card: compatible Windows-sound card

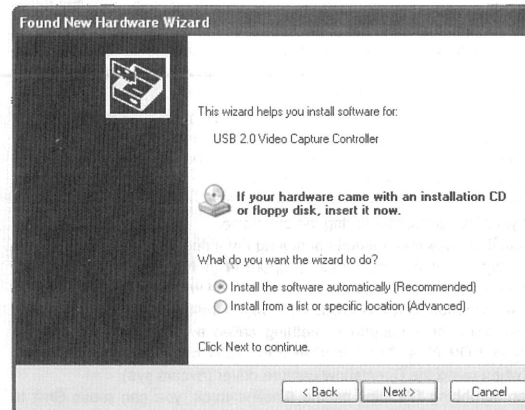
Package Contents

- Easy CAP USB 2.0 Video Adapter with Audio
- User Manual
- CD-ROM (included driver and the professional video editor software)

Hardware Installation

Note: If you have any antivirus software enabled, please disable it during the installation of the software.

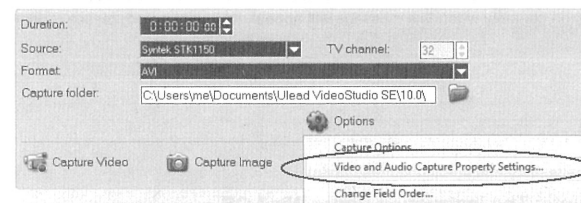
Before you first connect the Easy CAP USB2.0 Video Adapter with Audio to your computer, please insert the "Software CD-ROM" into your CD drive. Select the option "Install Driver".



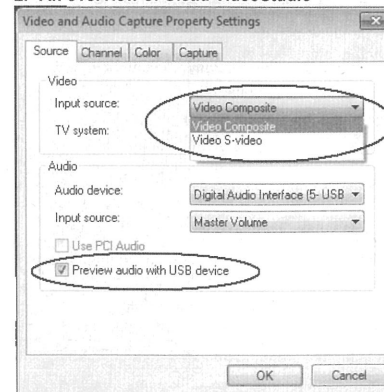
Ulead VideoStudio

This document provides basic information about Ulead VideoStudio. Please click below to read more about each topic before you start using Ulead VideoStudio.

1. Video in Setup



2. An overview of Ulead VideoStudio

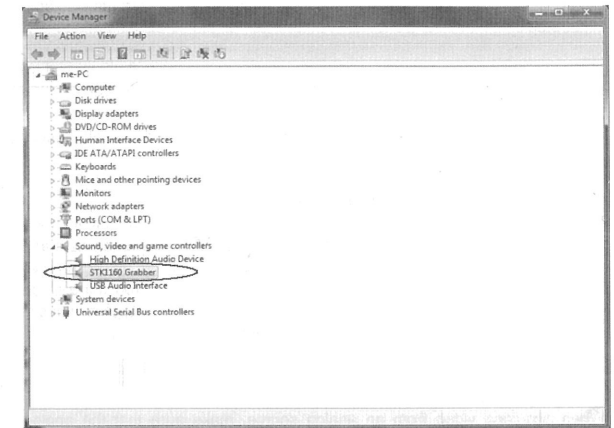


Ulead VideoStudio is a consumer video editing software that lets users quickly and easily produce their own home videos complete with attractive titles, video filters, transitions, and sound. Unlike other software, Ulead VideoStudio features an intuitive step-based interface that helps users get started right away. By following the steps, you will be creating video masterpieces before you know it. Once you have completed your video projects, you can share them on tape, e-mail, the Web or burn your own high-quality VCDs, SVCDs and DVDs.

If prompted select "No, not this time" and select "Next". Select the option "Install the software automatically" and click "Next". A windows may appear about the "STK1160 Grabber" not passing the windows logo testing, select "Continue Anyway". Awhen "Completing the Found New Hardware Wizard" window appears click the "Finish" button to complete the driver installation.

Note: If any further components are found please-repeat the above process until you receive the message "Found new hardware: Your hardware is installed and configured use".

You need to check that if the drivers are installed correctly. Connect the Easy CAP USB 2.0 Video Adapter with Audio to your computer, Right Click on My Computer and Left Click on properties. Click on Hardware tab and then Device Manager.



In the Device Manager Click on the +imaging devices correctly you should see the "STK1160 Grabber". If it has a Yellow mark next to it then this means that the driver is not installed correctly. You will need to remove the driver and disconnect the Easy CAP USB 2.0 Video Adapter with Audio from the computer and reconnect it to install the driver again.

3. System Requirements

- Intel Pentium III 800 MHz or higher
- Microsoft Windows 2000, XP / Vista / Win 7
- 256MB of RAM (512MB or above for editing)
- 600MB of available hard drive space for program installation
- 4 GB+ hard drive space for video capture and editing
- Windows-compatible display with at least 1024x768 resolutions
- Windows compatible sound card
- CDROM, CD-R/RW or DVD-R/RW
- Real-time features perform best with at least:
 - Pentium 4, 2.0 GHz CPU
 - 512 MB of RAM
 - 7200 rpm IDE hard drive

4. Installing Ulead VideoStudio and drivers

To install Ulead VideoStudio and the necessary drivers, insert your Ulead VideoStudio CD in the CD-ROM drive and simply follow the on-screen installation instructions.

What are these drivers?

QuickTime 6.5 - The video format from Apple for creating and playing back movie files such as MOV and QT file formats. You should install QuickTime 6.5 or above to be able to use the Auto Music function (i.e., SmartSound QuickTracks? In Ulead VideoStudio. For more information on Apple QuickTime, visit their web site at <http://www.apple.com/quicktime>.

SmartSound Quicktracks - This is a plug-in from SmartSound?that is integrated into Ulead VideoStudio. It gives you a library of quality soundtracks that you can add as background music to your movie projects.

RealPlayer 8.0 - This is a software player from RealNetworks for playing Real Video and Real Audio files from the Internet. it is recommended that you install this driver unless you have a later version. For more information, visit their web site at <http://www.real.com/products>.

Intel Indeo 5.0 - This is the codec for creating or playing .A-I files in QuickTime. You should install Intel Indeo 5.0 or above to be able to use the style templates in the Ulead VideoStudio Movie Wizard.

Acrobat Reader 5.0 - This is Adobe Acrobat Reader and is used for viewing the Ulead VideoStudio electronic manual. It is recommended that you install it unless you have a later version.

Microsoft DirectX-A driver from Microsoft that improves playback performance of video files. You should install this driver. It will be installed automatically when you are installing Ulead VideoStudio. For more information, visit Microsoft's Web site at <http://www.microsoft.com/directx>.

Microsoft Windows Media Format-A set of drivers from Microsoft that allows you to create WMV and other streaming media files. They will be installed automatically when you are installing Ulead VideoStudio. For more information, visit Microsoft's Web site at <http://www.microsoft.com/windows/windowsmedia>.

Note: If you have a previous version of Ulead VideoStudio installed in your system, it is recommended that you uninstall it only after installing Ulead VideoStudio. During installation, the Setup Wizard will auto-detect your capture device plug-in and specially supported codecs (such as MPEG-4, AC-3, 3GP, DivX) from the previous Video-Studio version and integrate it onto VideoStudio.

However, if you installed Ulead VideoStudio then you uninstalled the older version, program files and fonts that are used by both versions will also be deleted. To install them back to VideoStudio, double-click Add or Remove Programs in the Control Panel, select Ulead VideoStudio, click Change/Remove, then click Repair.

4. Registering your copy of Ulead VideoStudio

Don't forget to register your copy of Ulead VideoStudio. You can do this during the installation of the program or by simply filling out the registration card and mailing it in. It is important to register your copy as it allows you to receive technical support and important product update information. You will also be getting the opportunity to win prizes as well as taking advantage of special promotions and discounts on other Ulead Systems? software.

5. Program-related information

5.1. Capture board requirements

When acquiring video from an analog source, make sure that the analog capture card you are using supports RGB or YUV capture.

5.2. Capture Step

To check MPEG capture settings, click the Options button in the Options Panel and select Video and Audio Capture Property Settings. In the dialog box that opens, click the Capture tab. To view more MPEG settings, click Advanced.

5.3. Edit Step

In the Edit tab of the Options Panel, the Keep original size option that was in

If you want to share and play your video on other machines, make sure you use a common codec, such as Cinepak, Indeo or MPEG. If you use a hardware codec, such as MJPEG, you may be unable to view the video unless the other machine has the same card on board.

You may experience some problems when playing QuickTime files. Some examples maybe, the playback may not be smooth or the Stop button in the Navigator bar cannot switch back to the Start button after playing. In such cases, please change to safe mode in the QuickTime Video Settings. (You can do this by clicking the Control Panel: QuickTime icon.)

Some camcorders (specifically some Panasonic models) have a small problem that prevents them from recording movies from your computer. If this is a problem, VideoStudio can be made to pause for a short time before transmitting the video to the camcorder. Find the msdevctl.ini file in the main program folder (in All Users.WINNT), open this file in Notepad and modify the following line (where 1 second = 1000):

[MainSec]

RecordDelay= 1000

Frame sizes supported by the Hitachi DVD Camcorder include:

- 352x480 (NTSC)
- 704x480 (NTSC)
- 352x576 (PAL)
- 704x576 (PAL)

Conflict between MicroMV and BT878-based capture card in Windows Me:

The conflict occurs when both Sony MicroMV and BT878 capture card drivers are installed. The capture function of the latter driver installed will fail.

MPEG cannot be supported when Adobe Premiere 6.5 and Ulead VideoStudio are installed in the same system:

When you have both Adobe Premiere 6.5 and Ulead VideoStudio install in the same system, VideoStudio will not be able to perform MPEG related functions.

The solution would be:

- a) Uninstall and then reinstall Vide-Studio.
- b) Copy all MPEG files in

C:\Program Files\common Files\ulead Systems\MPEG

the Resample option drop-down list has been removed. If you want image clips to retain their original size, apply Pan & Zoom to the image clips. For each image clip, select Pan & Zoom, then click Customize Pan & Zoom and set the Zoom ratio to 100%.

5.4. Effect Step

Before applying the Album Flip transition effect to your clips, make sure that your system is updated with the latest display card driver.

5.5. Share Step

To create an MPEG video file or DVD/VCD/SVCD-ready MPEG file:

Click the create Video File button and select one of the movie templates from the pop-up menu, or select Same as Project Settings to output an MPEG file according to the project settings. Or, Click the Create Video File button and select Custom. Select MPEG files from the Save as type box, then click the Options button to specify the properties for the video file.

6. DV-related Information

6.1. Please make sure the DV IEEE-1394 board (DV Board) and its drivers are properly installed (please check with your DV IEEE-1394 board manual for details on installation). Connect your DV camcorder to the DV Board using the IEEE-1394 cable provided with your DV camcorder. Turn on the power of your DV camcorder by switching it to either VTR or Camera mode.

6.2. If you observe many frames were dropped during DV capture,

* Please check if your computer meets the program system requirements.

* Defragment your hard disk.

6.3. Some DV boards do not support PAL. Please consult your DV board manual for more information.

6.4. If you experience any problems recording video back to the camcorder from your computer, please make sure your computer (and especially your hard drive) meets the necessary minimum requirements.

6.5. To record or playback your final video through your DV camcorder, you should first be in the Edit Step or the Share Step. Select a DV AVI clip in the Library, then click Export in the Options Panel and select DV Recording. Follow the instructions to record or play the clip.

6.6. While you are capturing or recording DV files, please don't turn off the power of your DV camcorder during the operation.

6.7. Microsoft defines two methods of storing DV video data in AVI files, called type-1 and type-2. Ulead VideoStudio supports both. If you want to know more about these two DV AVI file formats, please visit the web site at:

<http://www.microsoft.com/hwdev/desinit/dvavi.htm#type1>

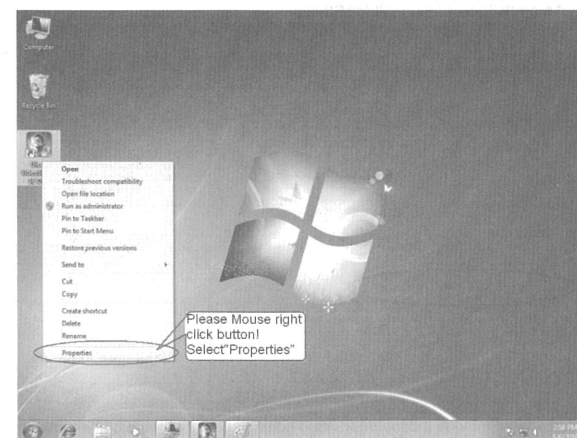
6.8. All Adaptec cards support something called a PAPI interface and will capture type-2 DV AVIs. TI compatible IEEE-1394 cards can capture type-1 DV AVIs when using the Directshow capture driver (dvcam.sys).

6.9. When scrubbing DV clips on the timeline track, you can press Shift to repaint the Preview window faster and smoother.

To
C:\WINNT\system
"Please install the latest DirectX Media from www.microsoft.com/directx" message:

The message will be prompted depending on the system environment. There is no certainty when this message will appear. when prompted, please reboot.

Note: The instruction under Win7 OS:



Select "Ulead VideoStudio SE DVD" Logo, Press right button of mouse, then select "Properties"

6.10. If your system supports DMA transfer, please enable it.

To enable DMA in Windows 98 SE or Windows Me:

6.10.1. Open the Control Panel.

6.10.2. Double-click the System icon.

6.10.3. Click the Device Manager tab.

6.10.4. From "Disk Drives", select "GENERIC IDE DISK TYPE46" then click the Properties button.

6.10.5. Click the Settings tab, and then select the DMA control.

6.10.6. Click OK to exit.

To enable DMA in Windows 2000 or Windows XP / Vista / Win 7

6.10.7. Open the Control Panel.

6.10.8. Double-click the System icon.

6.10.9. Click the Hardware tab then click Device Manager.

6.10.10. From "IDE ATA/ATAPI controllers", right-click "Primary/Secondary IDE channel" and select Properties.

6.10.11. Click the Advanced Settings tab. Set Transfer Mode to the DMA if available option.

6.1 I. To adjust the DV record settings, click the File menu and then Select Device Control command to open the Device Control dialog box. Select "MS 1394 Device Control" and click the Options button. There are four record settings that you can adjust for your DV camcorder. As a rule of thumb, keep the first 3 attributes on their default values; change the Delay record time to 3000 and try recording video. If there's too much noise, reduce the value. If, however, you notice frames are being dropped while recording, increase the value. Repeat this process by adding/subtracting about 200-500 on/off the value each time until you achieved desired results.

Where to get the latest drivers:

For the latest Adaptec 8920 or 8945 IEEE 1394 boards, please

visit the web site at:

http://www.Adaptec.com/world_wide/support/support_index.html

For the latest TI IEEE 1394 card drivers please visit:

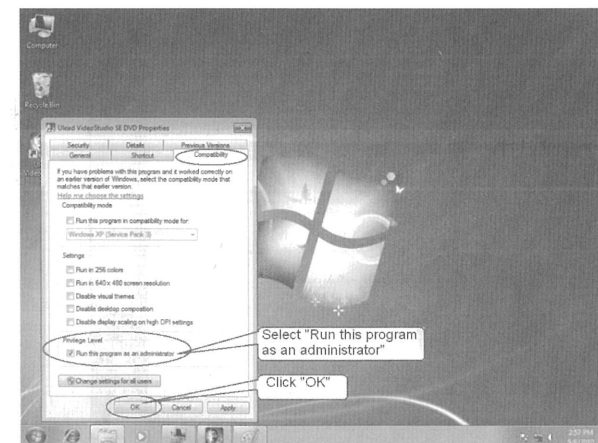
<http://www.ti.com>

7. Troubleshooting

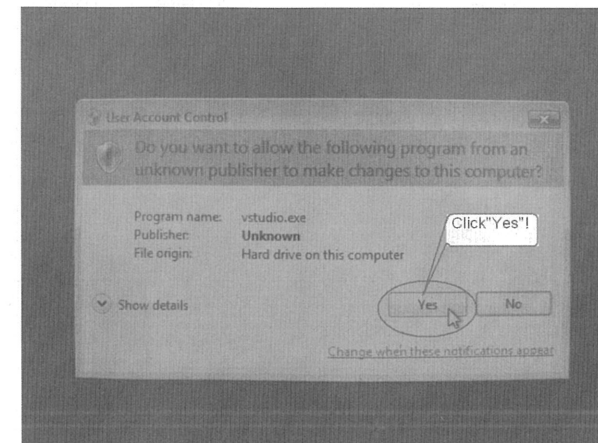
If you experience difficulty getting started with Ulead VideoStudio, use the online help or check the manual for information.

When rendering a title text against a pure background color clip, the text may appear blurry. This is due to certain types of compression. For better results, try using the Video I, RLE, or no compression

The Video Greeting Card does not support QuickTime files.



Select "Run this program as an administrator", then Click "OK"



Click "Yes"