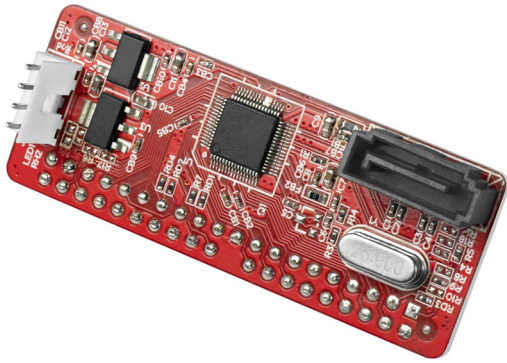


LogiLink®



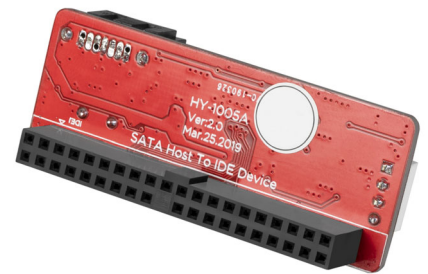
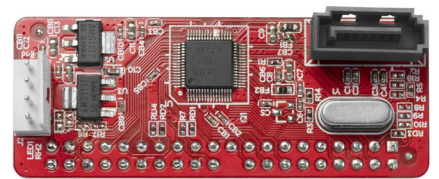
IDE ATAPI (PATA) to SATA Converter

Art. No.: AD0005B

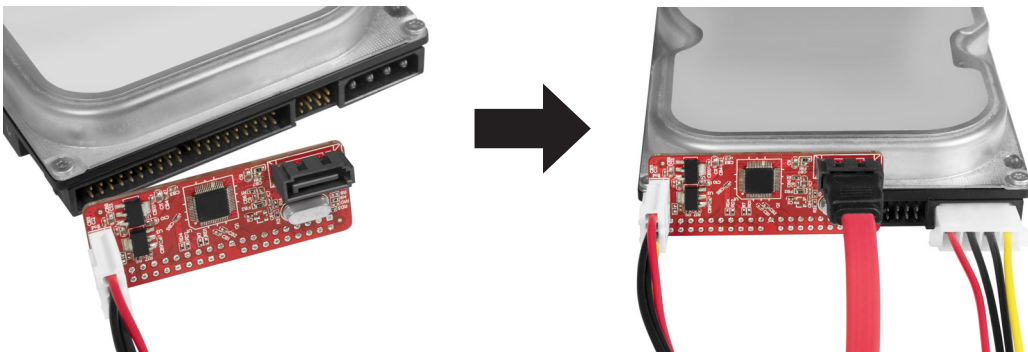
The Logilink AD0005B IDE to Serial ATA converter is the most cost effective solution for converting standard IDE and ATAPI devices to the new Serial ATA interface standard. Designed to mount easily behind the back of any IDE hard drive and ATAPI devices, this adapter lets you connect your older IDE drives to your new SATA interface. With simple Plug and Play installation, you'll be using your IDE hard drive or ATAPI device with SATA high speed.

Features:

- » Connect an IDE hard drive to a SATA controller
- » Compliant to Serial ATA 1.0 standard up to 3.0Gbps
- » Supports up to UDMA/133 Drives
- » Plug and Play
- » Compatible with most of Serial ATA controller
- » Connector: 1 x IDE40 pin, 1 x SATA 7 pin and 1 x 4 pin power connector



HDD Installation:



AD0005B v.2



4 052792 015195
Made in China

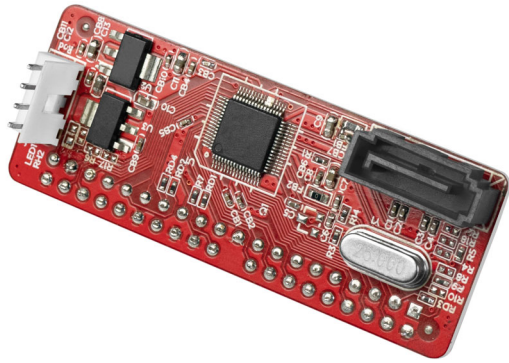


RoHS
compliant



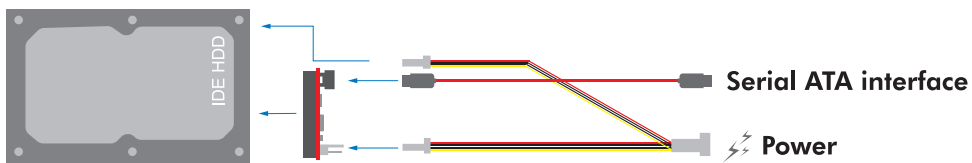
* The specifications and pictures are subject to change without notice.
* All trade names referenced are the registered namework of their respective owners.

LogiLink®



IDE ATAPI (PATA) to SATA Converter

Art. No.: AD0005B



**Plug
& Play**

**IDE
40 pin**

**SATA
7 pin**

**Power
Connecto
4 pin**

Package Contents:

- » 1 x Serial ATA-to-IDE Converter
- » 1 x Y-Splitter Power Cable
- » 1 x SATA Cable
- » 1 x LP4 to SATA 15PIN Cable
- » 1 x User Manual

Packaging Information:

- » Packing Dimension: mm
- » Packing Weight: kg
- » Carton Dimension: mm
- » Carton Q'ty: pcs
- » Carton Weight: kg



AD0005B v.2



4 052792 015195
Made in China



RoHS
compliant



* The specifications and pictures are subject to change without notice.
* All trade names referenced are the registered namework of their respective owners.