

300Mbps Wireless 802.11b/g/n USB Adapter

EW-7612UAn / EW-7612UMn / EW-7622UMn
Quick Installation Guide

Version 1.0 / August, 2010

Multi-Languages QIG in Driver CD

=====

Český: Českého průvodce rychlou instalací naleznete na příloženém CD s ovladači

Deutsch: Auf der beiliegend Treiber CD finden Sie deutsche Anleitung zur Schnellinstallation.

Español: Incluido en el CD el QIG en Español

Français: Veuillez trouver l'français QIG ci-joint dans le CD

Italiano: Incluso nel CD il QIG in Italiano

Magyar: A magyar telepítési útmutató megtalálható a mellékelt CD-n

Nederlands: De nederlandse QIG treft u aan op de bijgesloten CD

Polski: Skrócona instrukcja instalacji w języku polskim znajduje się na załączonej płycie CD

Português: Incluído no CD o QIG em Portugues

Русский: Найдите QIG на русском языке на приложенном CD

Romana: Cd-ul cuprinde Ghid de instalare rapida in limba romana

Slovensky: Anglického sprievodcu rýchlou inštaláciou nájdete na priloženom CD s ovládačmi.

Türkçe: Ürün ile beraber gelen CD içinde Türkçe Hızlı Kurulum Kılavuzu'nu bulabilirsiniz

简体中文: 产品包装 CD 光盘中含有简体中文版快速安装手册

繁體中文: 產品包裝隨附 CD 中含有繁體中文版之快速安裝指南



Copyright© by Edimax Technology Co, LTD. all rights reserved. No part of this publication may be reproduced, transmitted, transcribed, stored in a retrieval system, or translated into any language or computer language, in any form or by any means, electronic, mechanical, magnetic, optical, chemical, manual or otherwise, without the prior written permission of this company.

This company makes no representations or warranties, either expressed or implied, with respect to the contents hereof and specifically disclaims any warranties, merchantability or fitness for any particular purpose. Any software described in this manual is sold or licensed "as is". Should the programs prove defective following their purchase, the buyer (and not this company, its distributor, or its dealer) assumes the entire cost of all necessary servicing, repair, and any incidental or consequential damages resulting from any defect in the software. Further, this company reserves the right to revise this publication and to make changes from time to time in the contents hereof without obligation to notify any person of such revision or changes.

The product you have purchased and the setup screen may appear slightly different from those shown in this QIG. For more detailed information about this product, please refer to the User's Manual on the CD-ROM. The software and specifications are subject to change without notice. Please visit our web site www.edimax.com for the update. All right reserved including all brand and product names mentioned in this manual are trademarks and/or registered trademarks of their respective holders.

1. Product Information

Main Features

- Complies with wireless 802.11b/g/n standards with data rate up to 300Mbps
- Increases Wireless coverage 4 times further *
- Includes multi-language EZmax setup wizard
- Supports USB 2.0/1.1 interface
- Supports WPS configuration function
- Supports WMM, WMM-PS (IEEE 802.11e QoS standard)
- Supports 64/128-bit WEP, WPA (TKIP with IEEE 802.1x), WPA2 (AES with IEEE 802.1x) for high security level
- Supports operating system: Windows XP/Vista/7

* Maximum performance may vary depending on network conditions and environmental factors.

2. Package Contents

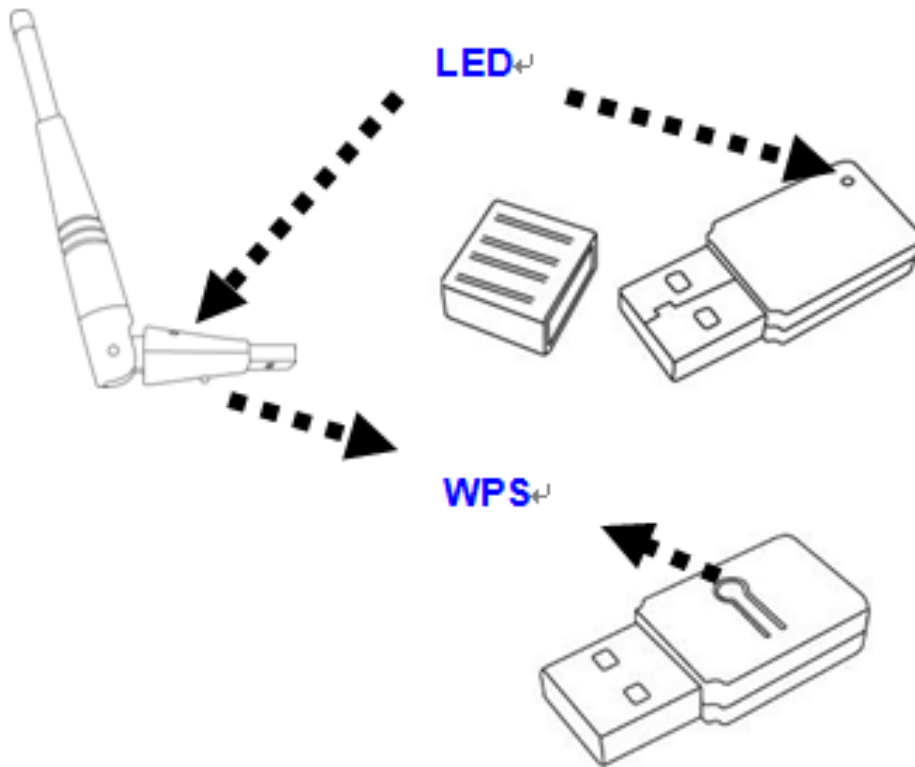
Before you starting to use this wireless network card, please check if there's anything missing in the package, and contact your dealer of purchase to claim for missing items:

- Wireless USB Adapter x1
- USB cable x1
- Quick Installation Guide x1
- CD (EZmax Wizard / Utility, Multi-language Quick Installation Guide & User Manual) x1

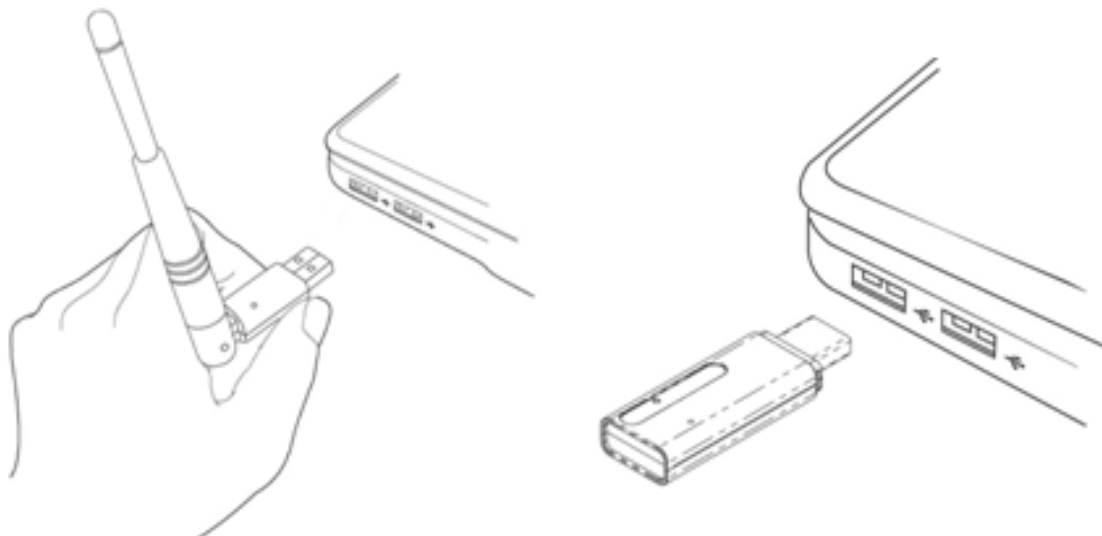
3. Network Card Installation

Please follow the following instructions to install your new USB wireless network card:

3.1 Hardware Installation



1. Insert the USB wireless network card into an empty USB 2.0 port of your computer when computer is switched on.



Never use force to insert the card, if you feel it's stuck, flip the card over and try again.

2. The following message will appear on your computer, click 'Cancel'.



Software Installation

This wizard can be run in Windows XP/Vista/7. **The following procedures are operated in Windows XP.**

You can install the Wireless Adapter by EZMAX Setup Wizard in the CD-ROM including in the package. The wizard is an easy and quick configuration tool for internet connection with series process. When you start EZMAX Setup Wizard, you will get the following welcome screen. Please choose the language to start the configuration. The wizard will guide you to finish your network connection. We will not provide any instruction for the EZMAX Setup Wizard here.



For advanced settings and other features of this wireless network card, please refer to user manual enclosed in supplied CD-ROM.

Federal Communication Commission Interference Statement

This equipment has been tested and found to comply with the limits for a Class B digital device, pursuant to Part 15 of FCC Rules. These limits are designed to provide reasonable protection against harmful interference in a residential installation. This equipment generates, uses, and can radiate radio frequency energy and, if not installed and used in accordance with the instructions, may cause harmful interference to radio communications. However, there is no guarantee that interference will not occur in a particular installation. If this equipment does cause harmful interference to radio or television reception, which can be determined by turning the equipment off and on, the user is encouraged to try to correct the interference by one or more of the following measures:

1. Reorient or relocate the receiving antenna.
2. Increase the separation between the equipment and receiver.
3. Connect the equipment into an outlet on a circuit different from that to which the receiver is connected.
4. Consult the dealer or an experienced radio technician for help.

FCC Caution

This device and its antenna must not be co-located or operating in conjunction with any other antenna or transmitter. This device complies with Part 15 of the FCC Rules. Operation is subject to the following two conditions: (1) this device may not cause harmful interference, and (2) this device must accept any interference received, including interference that may cause undesired operation. Any changes or modifications not expressly approved by the party responsible for compliance could void the authority to operate equipment.

Federal Communication Commission (FCC) Radiation Exposure Statement

This equipment complies with FCC radiation exposure set forth for an uncontrolled environment. In order to avoid the possibility of exceeding the FCC radio frequency exposure limits, human proximity to the antenna shall not be less than 20cm (8 inches) during normal operation.

The antenna(s) used for this transmitter must not be co-located or operating in conjunction with any other antenna or transmitter.

R&TTE Compliance Statement

This equipment complies with all the requirements of DIRECTIVE 1999/5/EC OF THE EUROPEAN PARLIAMENT AND THE COUNCIL of March 9, 1999 on radio equipment and telecommunication terminal Equipment and the mutual recognition of their conformity (R&TTE)

The R&TTE Directive repeals and replaces in the directive 98/13/EEC (Telecommunications Terminal Equipment and Satellite Earth Station Equipment) As of April 8, 2000.

Safety

This equipment is designed with the utmost care for the safety of those who install and use it. However, special attention must be paid to the dangers of electric shock and static electricity when working with electrical equipment. All guidelines of this and of the computer manufacture must therefore be allowed at all times to ensure the safe use of the equipment.

EU Countries Intended for Use

The ETSI version of this device is intended for home and office use in Austria, Belgium, Denmark, Finland, France, Germany, Greece, Ireland, Italy, Luxembourg, Bulgaria, Cyprus, Czech Republic, Estonia, Hungary, Latvia, Lithuania, Malta, Poland, Romania, Slovakia, Slovenia, the Netherlands, Portugal, Spain, Sweden, and the United Kingdom.

The ETSI version of this device is also authorized for use in EFTA member states: Iceland, Liechtenstein, Norway, and Switzerland.

EU Countries not intended for use

None

Please check the declaration of conformity on www.edimax.com



AЯ46



EDIMAX Technology Co., Ltd.

www.edimax.com