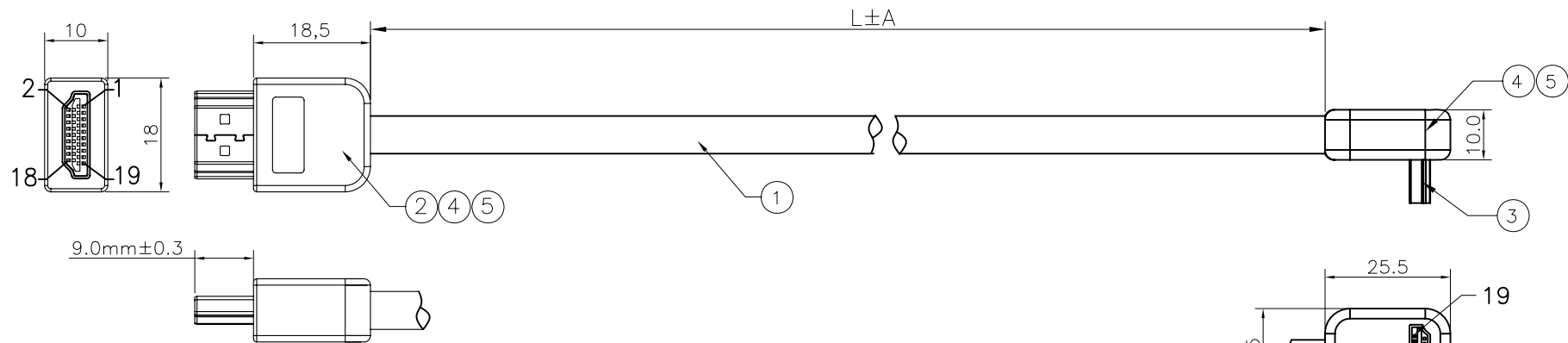


REV.	LTR	ECN/DESCRIPTION	DATE
X1		NEW TYPE	2012/05/10



PIN ASSIGNMENT

P1	WIRE TYPE	P2	WIRE COLOR	SIGNAL
PIN3		PIN3	WHITE (白色)	TMDS DATA 2-
PIN1		PIN1	BROWN (棕色)	TMDS DATA 2+
PIN2		PIN2	D.W (地線)	TMDS DATA 2SHIELD
PIN6		PIN6	WHITE (白色)	TMDS DATA 1-
PIN4		PIN4	GREEN (綠色)	TMDS DATA 1+
PIN5		PIN5	D.W (地線)	TMDS DATA 1SHIELD
PIN9		PIN9	WHITE (白色)	TMDS DATA 0-
PIN7		PIN7	RED (紅色)	TMDS DATA 0+
PIN8		PIN8	D.W (地線)	TMDS DATA 0SHIELD
PIN12		PIN12	WHITE (白色)	TMDS CLOCK-
PIN10		PIN10	BLUE (藍色)	TMDS CLOCK+
PIN11		PIN11	D.W (地線)	TMDS CLOCK SHIELD
PIN19		PIN19	BLACK (黑色)	HPD/HEAC-
PIN14		PIN14	WHITE (白色)	UTILITY/HEAC+
PIN17		PIN17	D.W (地線)	DDC/CEC/HEAC GND
PIN13		PIN13	ORANGE (橙色)	CEC
PIN15		PIN15	YELLOW (黃色)	SCL
PIN16		PIN16	RED (紅色)	SDA
PIN18		PIN18	WHITE (白色)	+5V POWER
SHELL		SHELL	BRAID (編織)	

NO.	NAME	PART NUMBER	MATERIAL DESCRIPTION	QTY	UNITS
5	OVER MOLD	A0P70301*	PVC 70P COLOR:BLACK	AR	KG
4	INNER MOLD	A0005G01*	LOW DENSITY POLYETHYLENE AOPOLYMER · LDPE MG70	AR	KG
3	CONNECTOR	N/A	HDMI 19P MALE,MALE G/F WITH PCB,BLACK INSULATION GOLD PLATED FOR METAL SHELL.	1	PCS
2	CONNECTOR	51S019P-304F-B-SF-S*	HDMI 19PIN MALE G/F SOLDER TYPE BLACK INSULATION GOLD PLATED FOR METAL SHELL.	1	PCS
1	CABLE	ECA0630106036S	HIGH SPEED HDMI WITH ETHERNET CABLE UL20276 (30AWG(1/0.254)*1P+D(1/0.254)+AL+低溫熱熔(MYLAR)*5C+30AWG (1/0.254)*4C+FILLER +AL+D+B OD:6.0MM 印FREEPORT 印字	AR	M

NOTE:

1. OPEN/SHORT/INTERMITTENCE 100% TEST.
2. HI-POT:300V DC/0.1SEC.
3. INSULATION RESISTANCE:10MΩ MIN.
4. CONDUCTIVE RESISTANCE:2Ω MAX.
5. RoHS COMPLIANT.

CUSTOMER DRAWING		GENERAL TOLERANCES UNLESS SPECIFIED		APPROVED BY:		TITLE: HDMI A/M 90° TO HDMI A/M 180° CABLE	
		SIZE A4	UNITS MM[INCH]	X±0.50 .X±0.35	X*±5.0° .X*±3.0°	CHECKED BY:	
SCALE NONE	REV. X1	.XX±0.5	.XX*±.5°	DESIGN BY:		DWG NO.:	SHEET 1/1
		.XXX±0.15	.XXX*±.0°			KF1205090009-2	