

LogiLink®

Best Connectivity

LogiLink®

WL0084B

**Wireless N 150Mbps
USB Adapter**



Quick User Guide | [EN](#)



According to the European WEEE directive, electrical and electronic equipment must not be disposed with consumers waste. Its components must be recycled or disposed apart from each other. Otherwise contaminative and hazardous substances can pollute our environment.

You as a consumer are committed by law to dispose electrical and electronic devices to the producer, the dealer, or public collecting points at the end of the devices lifetime for free. Particulars are regulated in national right. The symbol on the product, in the user's manual, or at the packaging alludes to these terms. With this kind of waste separation, application, and waste disposal of used devices you achieve an important share to environmental protection.

1.0 Safety Instructions

Put the Device always on a stable and straight Surface. In case of falling it can be damaged.

Don't place the Device into direct Sunlight or in Places with high Temperature. This can damage the Device or shorten his average useful Life.

Don't place it in the near of Heat Sources, like Radiators or other heat producing Devices.

Don't expose the Device to Rain, Water, Wetness or high Humidity.

Don't place it in the Bathroom or the Kitchen in the near of a Sink.

Avoid the direct Contact with Water.

Don't try to open the Device.

Prior to the first use of our product make a backup of your data.

We are not liable for any loss of data, unless you can accuse us intention or gross negligence.

In any case, liability for loss of data is limited to the effort that is necessary to restore from existing backup copies.

Congratulations to the Purchase of LogiLink WL0084B!

Please read the Manual and Safety Instructions before using the product for the first time. Otherwise damage can be the result.

2.0 Introduction

The WL0084B Wireless N 150Mbps USB Adapter is designed for SOHO users.

It allows users to enjoy Wireless network and easy wireless security connection.

2.1 Specification

- Complies with IEEE802.11b/g/n standards
- High transfer data rate – up to 150Mbps
- Supports 64/128-bit WEP, WPA, WPA2, WPA-PSK and WPA2-PSK Encryption
- Supports WiFi Protection Setup (WPS)
- Supports USB 2.0/1.1 interface
- Supports Windows XP/Vista/7, Linux and MAC OS

2.2 Package Contents

- 1 x Wireless N USB Adapter
- 1 x Quick Installation Guide
- 1 x CD (Driver + Manual)

2.3 Wireless USB Adapter Overview

Wireless USB Adapter has the USB interface and LED below.

■ **USB Interface:**

Connect the USB Interface to a USB port on your computer.

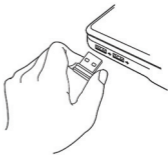
■ **LED:**

The LED stays lighted to indicate WLAN link established and active.



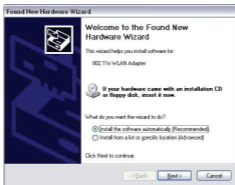
3.0 Installation

The following instructions will guide you to through the process of installing the Wireless USB Adapter.



1. Insert the Wireless N USB Adapter into an empty USB 2.0 port of your computer when computer is switched on. Never use force to insert the card, if you feel it's stuck, flip the card over and try again.
2. Once USB dongle connected to computer, Windows will detect that new hardware has been added, and start the "Found New Hardware". Click on "Cancel" to continue.

■ For Windows XP



■ For Windows 7

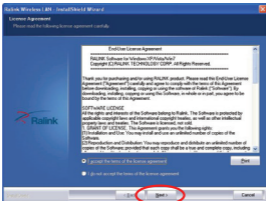


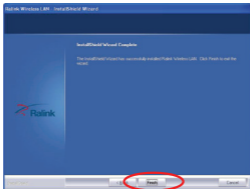
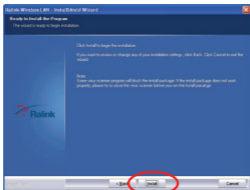
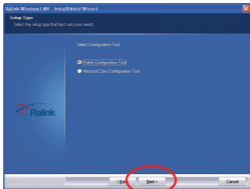
3. Please insert the AUTORUN CD into your CD-ROM drive. The CD should auto-start, displaying the following window. If it does not start, click on **Start-Run** and type in **CD:** **lautorun.exe** (where CD is the drive letter of your CD-ROM drive.) Click "**Driver Installation**".

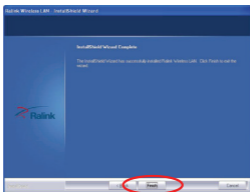
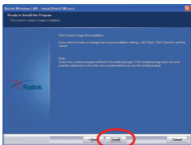
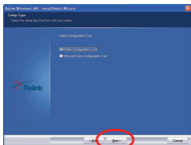


■ **For Windows 7 / Vista User only**

For Security reasons Windows 7 / Vista requires the installer program to have administrator privileges so the new policy called "**User Account Control**" has been introduced in Windows 7 / Vista. If UAC is enabled Windows pops up a window "**User Account Control**" Windows need your permission to continue. User needs to Click "**Yes / Allow**" to proceed with the installation.







For advanced settings and other features of this Wireless N USB Adapter, please refer to user manual enclosed in supplied CD-ROM.



CE Declaration:

This device corresponds to EU directive 1995/5/EC:
With the CE sign Logilink®, a registered trademark of the 2direct GmbH ensures, that the product is conformed to the basic standards and directives. These standards can be requested online on www.logilink.com. All trademarks and registered brands are the property of their respective owners.