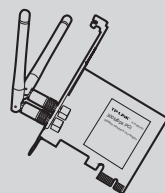


## Quick Installation Guide

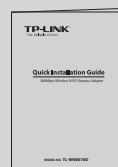
300Mbps Wireless N PCI Express Adapter

MODEL NO. TL-WN881ND

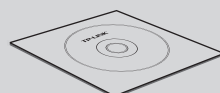
### Package Contents



TL-WN881ND



QIG

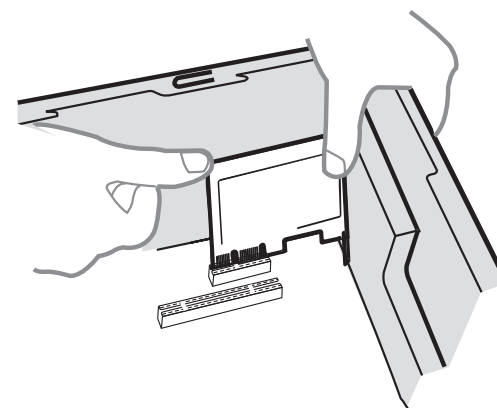


Resource CD

### System Requirement

- Windows 7
- Windows Vista
- Windows XP

## 1 Hardware Connection



### Steps :

1. Turn off your computer and unplug the power cord from the computer.
2. Open the case. Locate an available PCI Express slot and remove its slot cover. Keep the screw.
3. Insert the adapter into the PCI Express slot as shown above.
4. Secure the adapter with the screw removed in Step 2.
5. Close the case and insert the power cord back into the computer.
6. Turn on your computer.

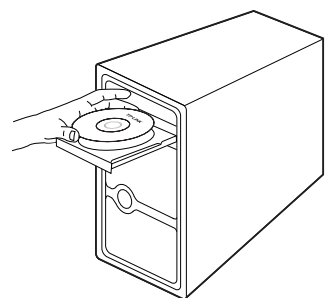
You may see the **Found New Hardware Wizard** after the adapter has been inserted. Please click 'Cancel'.



## 2 Software Installation

(The installation procedures in Windows 7/ Vista/ XP are similar. Here takes the procedures in Windows XP for example.)

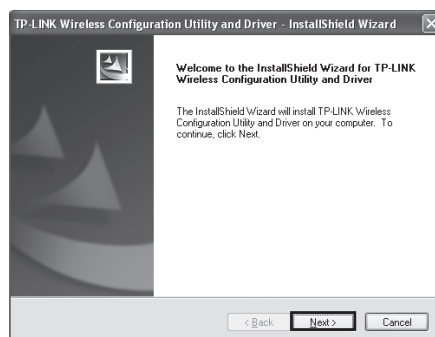
1. Insert the TP-LINK Resource CD into the CD-ROM drive.



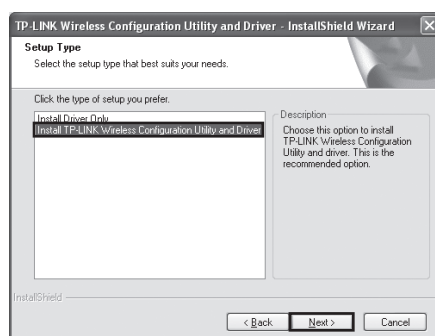
2. Find the appropriate model and choose **Install Driver&Utility**.



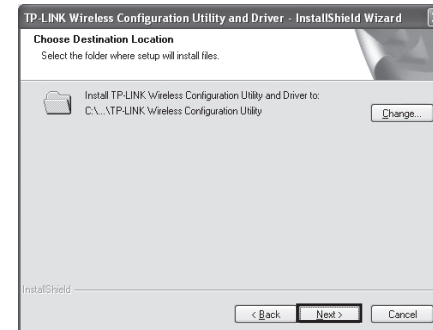
3. The **InstallShield Wizard** window will appear. Click **Next** to continue.



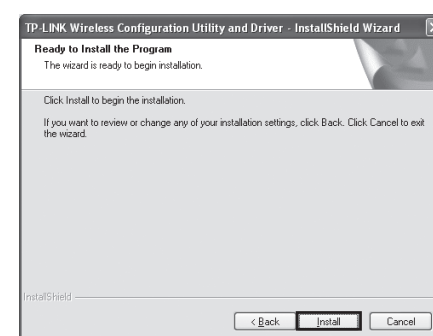
4. Select **Install TP-LINK Wireless Configuration Utility and Driver** and then click **Next**.



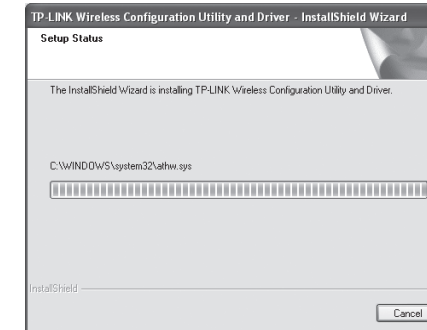
5. Click **Change** to specify the destination location or you can leave it default. Click **Next** to continue.



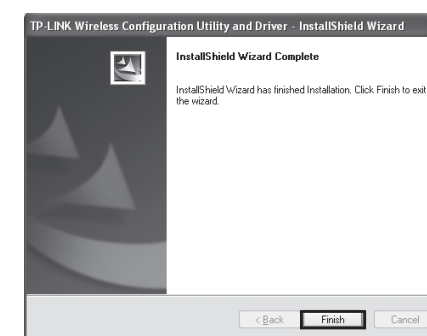
6. Click **Install** to install the driver and utility for your adapter.



7. The driver and utility will install. This may take 1~2 minutes.

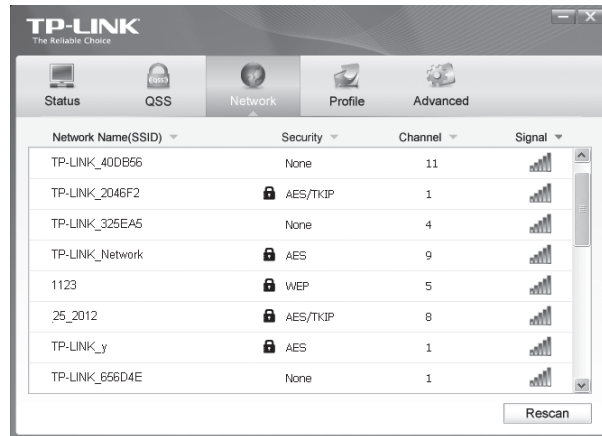


8. The following screen will then appear. Click **Finish** to complete the setup.

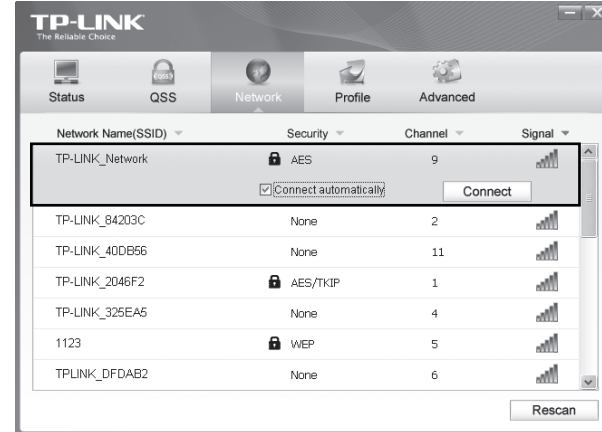


# 3 Connect to network (You can skip to **Appendix: Connect to Wireless Router by QSS** to quickly connect to a network if your router or access point features QSS or WPS function.)

**1** After installation, the configuration page will pop up on your desktop.



**2** Click **Network** in the tools section to display a list of available wireless networks. Highlight the target network name (e.g. TP-LINK\_Network) and then click **Connect** to build a connection.



**3** If the network is unsecured, you will directly connect to it. If it is security-enabled, there are two ways to connect to it.

**Method One:**

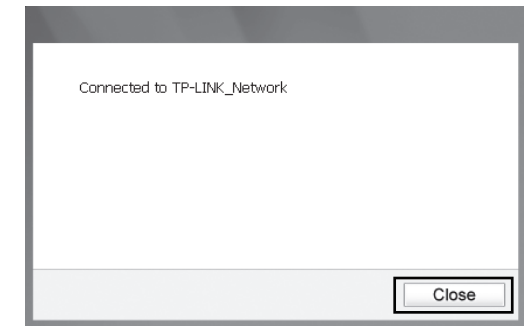
Input the security key into the field beside **Security Key** and click **OK** to continue.

**Method Two:**

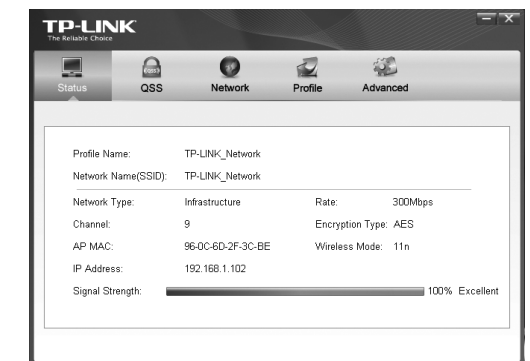
Without entering a key, push the QSS (other brands may call it WPS) button on your router if prompted to **You can also connect by pushing the button on the router** as shown below. Then click **OK** to continue.




**4** The following screen indicates successful connectivity. Click **Close** to enjoy the Internet.



**5** To view more information about the network connected, click **Status** in the tools section.

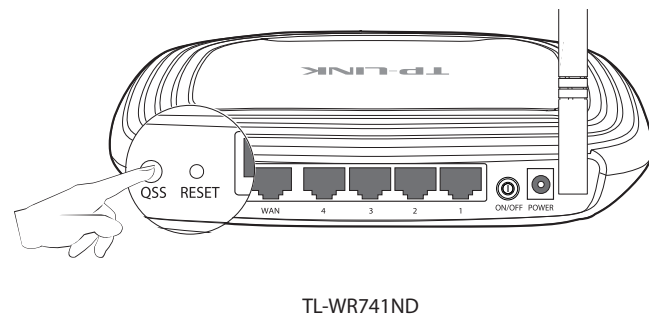


**Note** The icon  will appear on your desktop. Double-clicking on the icon can start the utility.

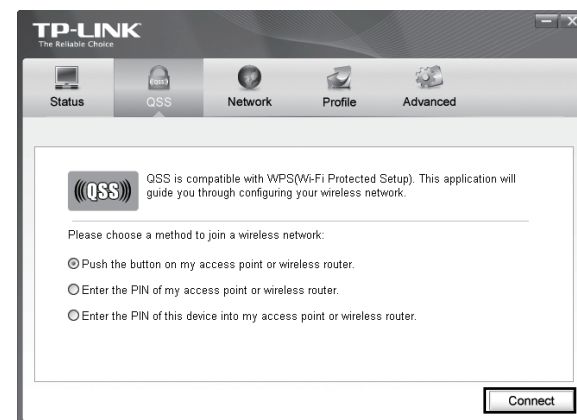
## Appendix: Connect to Wireless Router by QSS

If your wireless router features the QSS function (other brands may call it WPS), you can also set up a wireless connection in this way.

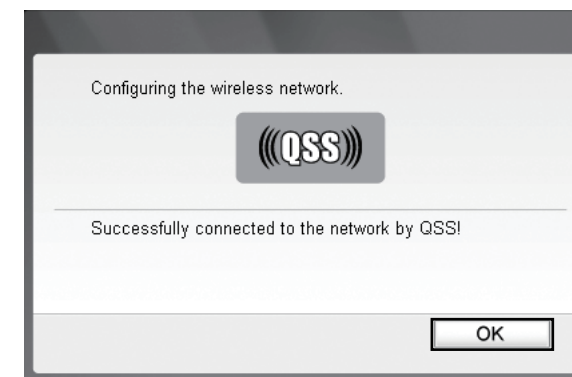
**1** Push the QSS button on the back panel of the Router. Here takes router TL-WR741ND for example.



**2** Launch the config utility and click **QSS** in the tools section. Select **Push the button on my access point or wireless router** and then click **Connect**.



**3** Wait for the connection progress to be completed. The following screen indicates successful connectivity. Click **OK** to finish the QSS connection.



**Note** For more configuration methods of QSS, please refer to the User Guide on the Resource CD.

## Technical Support

- For more troubleshooting help, go to [www.tp-link.com/support/faq.asp](http://www.tp-link.com/support/faq.asp)
- To download the latest Firmware, Driver, Utility and User Guide, go to [www.tp-link.com/support/download.asp](http://www.tp-link.com/support/download.asp)
- For all other technical support, please contact us by using the following details:

**Global**

Tel: +86 755 26504400  
E-mail: [support@tp-link.com](mailto:support@tp-link.com)  
Service time: 24hrs, 7 days a week

**Singapore**

Tel: +65 62840493  
E-mail: [support.sg@tp-link.com](mailto:support.sg@tp-link.com)  
Service time: 24hrs, 7 days a week

**UK**

Tel: +44 (0) 845 147 0017  
E-mail: [support.uk@tp-link.com](mailto:support.uk@tp-link.com)  
Service time: 24hrs, 7 days a week

**USA/Canada**

Toll Free: +1 866 225 8139  
E-mail: [support.usa@tp-link.com](mailto:support.usa@tp-link.com)  
Service time: 24hrs, 7 days a week

**Malaysia**

Tel: 1300 88 875465 (1300 88TPLINK)  
E-mail: [support.my@tp-link.com](mailto:support.my@tp-link.com)  
Service time: 24 hrs a day, 7 days a week

**Switzerland**

Tel: +41 (0)848 800998  
(German service)  
E-mail: [support.ch@tp-link.com](mailto:support.ch@tp-link.com)  
Fee: 4-8 Rp/min, depending on rate of different time  
Service time: Monday to Friday 9:00 AM to 6:00 PM, GMT+1 or GMT+2 (Daylight Saving Time)

**Australia & New Zealand**

Tel: AU 1300 87 5465  
NZ 0800 87 5465  
E-mail: [support@tp-link.com.au](mailto:support@tp-link.com.au)  
Service time: 24hrs, 7 days a week

**Turkey**

Tel: 444 19 25 (Turkish Service)  
E-mail: [support.tr@tp-link.com](mailto:support.tr@tp-link.com)  
Service time: 9:00 AM to 6:00 PM, 7 days a week

**Italy**

Tel: +39 02 66987799  
E-mail: [support.it@tp-link.com](mailto:support.it@tp-link.com)  
Service time: 9:00 AM to 6:00 PM, Monday to Friday

**Indonesia**

Tel: (+62) 021 6259 135  
E-mail: [support.id@tp-link.com](mailto:support.id@tp-link.com)  
Service time: Monday to Friday 9:00 -12:00; 13:00 -18:00 \*Except public holidays

**Germany / Austria**

Tel: +49 1805 875465 (German Service) / +49 1805 TPLINK  
E-mail: [support.de@tp-link.com](mailto:support.de@tp-link.com)  
Fee: 0.14 EUR/min from the German fixed phone network and up to 0.42 EUR/min from mobile phone.  
Service Time: Monday to Friday 9:00 AM to 6:00 PM GMT+1 or GMT+2 (Daylight Saving Time in Germany)  
\* Except bank holidays in Hesse