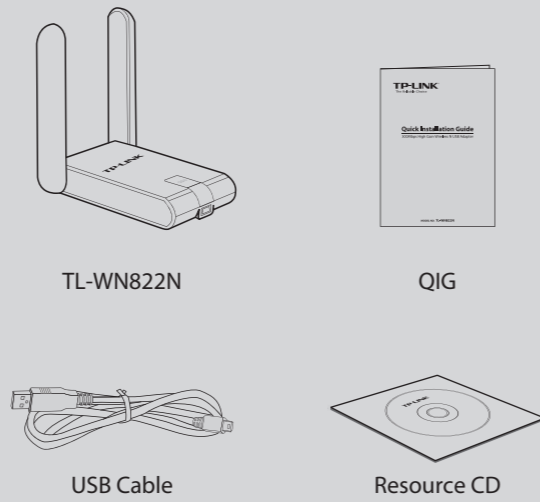


Quick Installation Guide

300Mbps High Gain Wireless N USB Adapter

MODEL NO. TL-WN822N

Package Contents

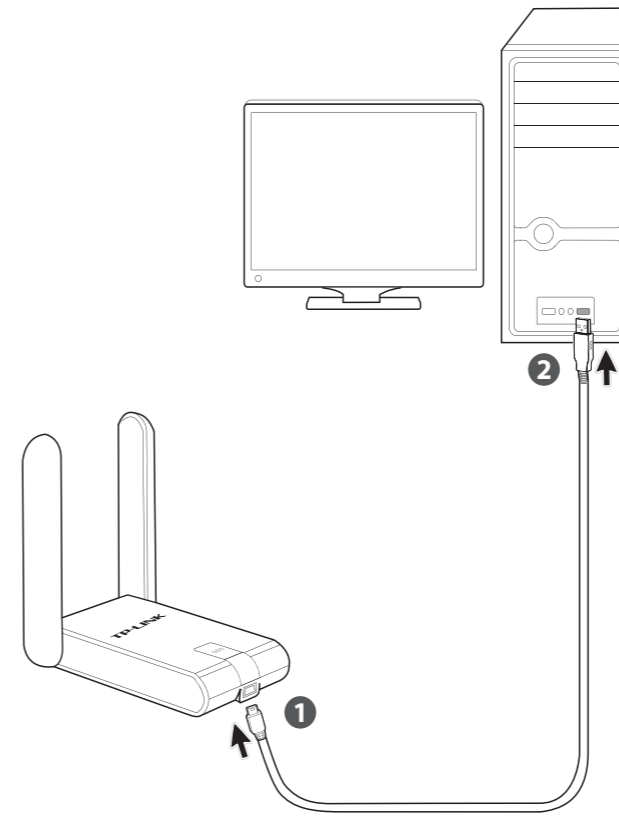


System Requirement

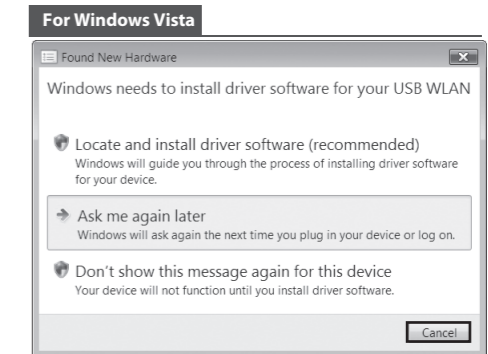
- Windows 7
- Windows Vista
- Windows XP

1 Hardware Connection

Connect the adapter and your computer with the provided USB cable.



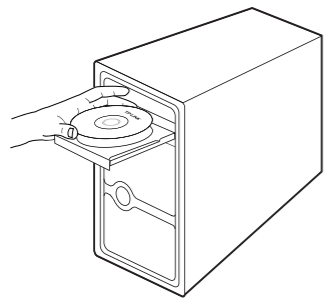
You may see the **Found New Hardware Wizard** after the adapter has been inserted. Please click **Cancel**.



2 Software Installation

(The installation procedures in Windows 7/ Vista/ XP are similar. Here takes the procedures in Windows 7 for example.)

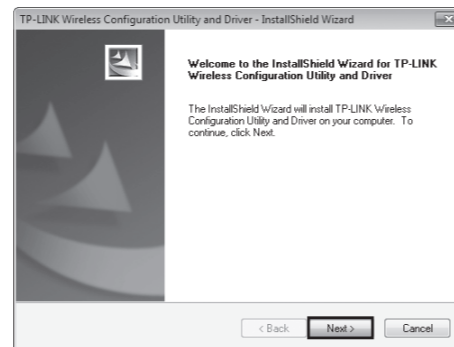
- 1 Insert the TP-LINK resource CD into the CD-ROM drive.



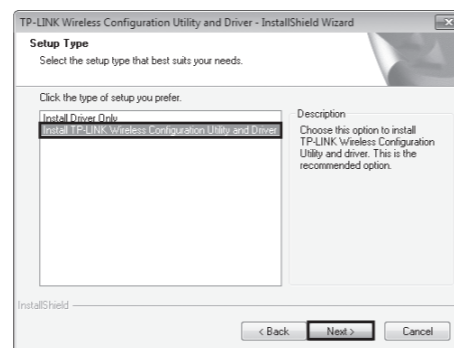
- 2 Find the appropriate model and choose **Install Driver&Utility**.



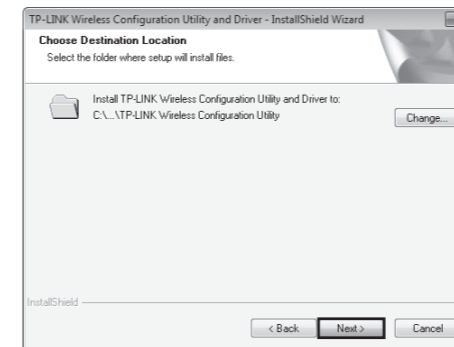
- 3 The **InstallShield Wizard** window will appear. Click **Next** to continue.



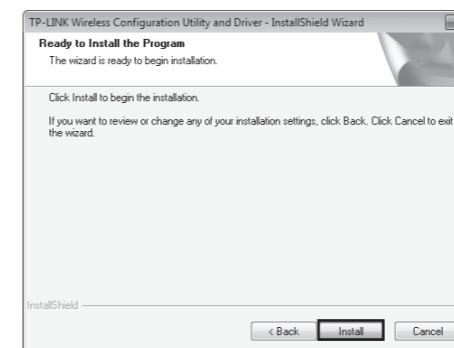
- 4 Select **Install TP-LINK Wireless Configuration Utility and Driver** and then click **Next**.



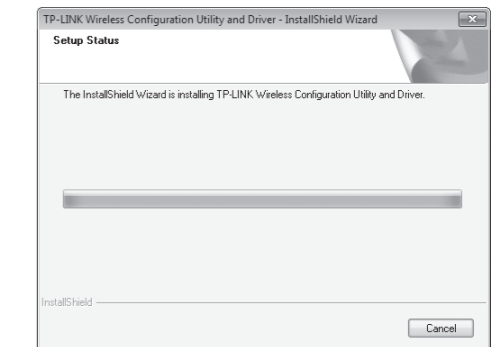
- 5 Click **Change** to specify the destination location or you can leave it default. Click **Next** to continue.



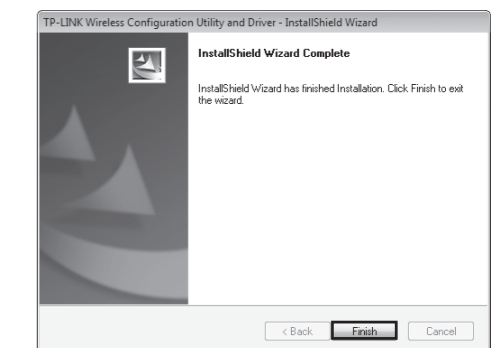
- 6 Click **Install** to install the driver and utility for your adapter.



- 7 The drivers and utility will install. This may take 1~2 minutes.



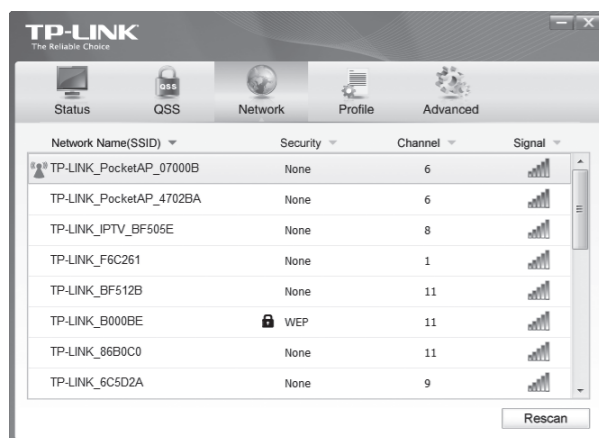
- 8 The following screen will then appear. Click **Finish** to complete the setup.



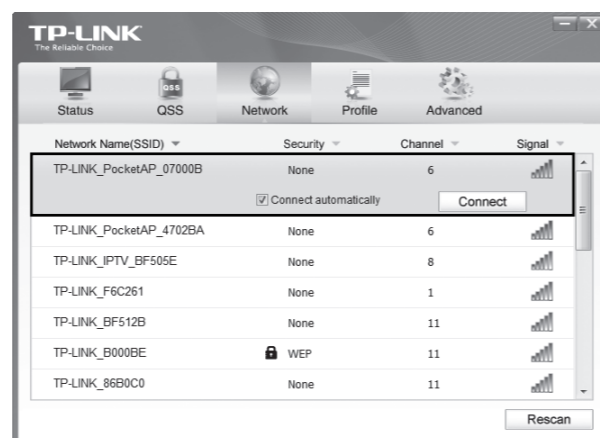
3 Connect to network

(You can skip to **Appendix: Connect to Wireless Router by QSS** to quickly connect to a network if your router or access point features QSS or WPS function.)

1 After installation, the configuration page will pop up on your desktop.



2 Click **Network** in the tools section to display a list of available wireless networks. Highlight the target network name (e.g. TP-LINK_PocketAP_07000B) and then click **Connect** to build a connection.



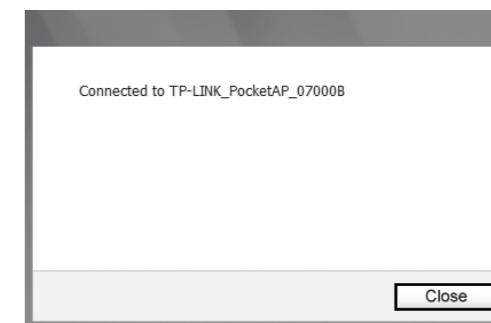
3 If the network is unsecured, you will directly connect to it. If it is security-enabled, there are two ways to connect to it.

Method One:
Input the security key into the field beside **Security Key** and click **OK** to continue.

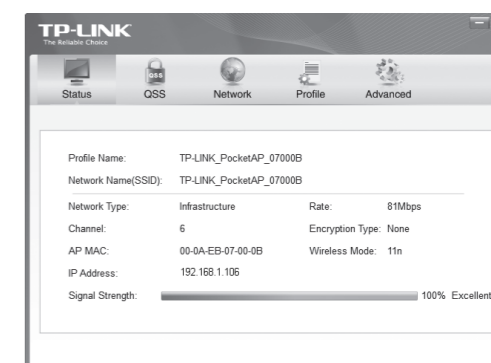
Method Two:
Without entering a key, push the QSS (other brands may call it WPS) button on your router if prompted to **You can also connect by pushing the button on the router** as shown below. Then click **OK** to continue.




4 The following screen indicates successful connectivity. Click **Close** to enjoy the Internet.



5 To view more information about the network connected, click **Status** in the tools section.

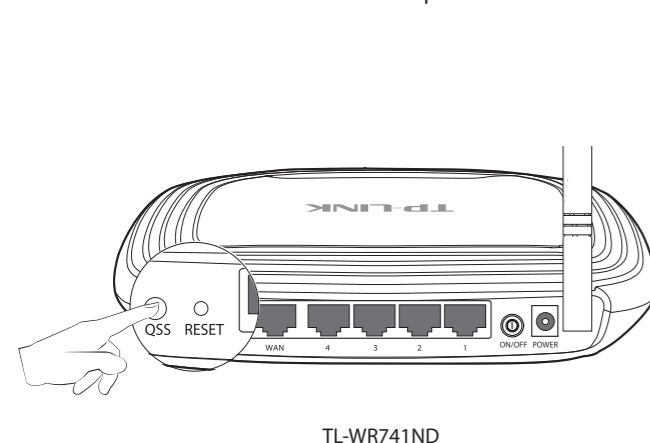


Note The icon  will appear on your desktop. Double-clicking on the icon can also start the utility.

Appendix: Connect to Wireless Router by QSS

If your wireless router features the QSS function (other brands may call it WPS), you can also set up a wireless connection in this way.

1 Push the QSS button on the back panel of the Router. Here takes router TL-WR741ND for example.



2 Press and hold the QSS button on the adapter for 2~3 seconds until Figure 2 appears.

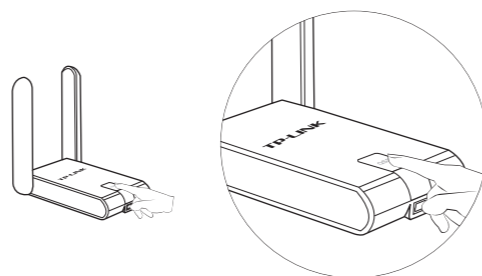


Figure 1

3 Wait for the connection progress to be completed. The following screen indicates successful connectivity. Click **OK** to finish the QSS connection.

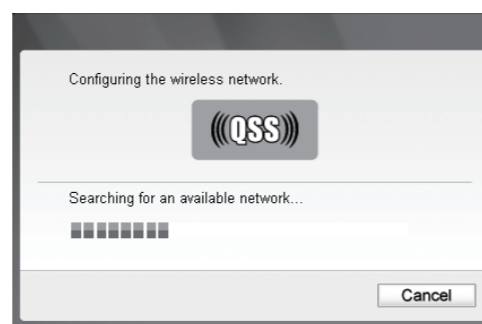


Figure 2

Note For detailed instructions of QSS, please refer to the User Guide on the resource CD.

Technical Support

- For more troubleshooting help, go to www.tp-link.com/support/faq.asp
- To download the latest Firmware, Driver, Utility and User Guide, go to www.tp-link.com/support/download.asp
- For all other technical support, please contact us by using the following details:

Global
Tel: +86 755 26504400
E-mail: support.sg@tp-link.com
Service time: 24hrs, 7days a week

Singapore
Tel: +65 62840493
E-mail: support.id@tp-link.com
Service time: 24hrs, 7days a week

UK
Tel: +44 (0) 845 147 0017
E-mail: support.uk@tp-link.com
Service time: 24hrs, 7days a week

USA/Canada
Toll Free: +1 866 225 8139
E-mail: support.usa@tp-link.com
Service time: 24hrs, 7days a week

Malaysia
Tel: 1300 88 875465 (1300 88TPLINK)
E-mail: support.my@tp-link.com
Service time: 24 hrs a day, 7days a week

Italy
Tel: +39 02 66987799
E-mail: support.it@tp-link.com
Service time: 9:00 AM to 6:00 PM, from Monday to Friday

Ukrainian
Tel: +380 (44) 590-51-14
E-mail: support.ua@tp-link.com
Service time: Monday to Friday 14:00 PM to 22:00 PM

Turkey
Tel: 444 19 25 (Turkish Service)
E-mail: support.tr@tp-link.com
Service time: 9:00 AM to 6:00 PM, 7days a week

Australia & New Zealand
Tel: AU 1300 87 5465
NZ 0800 87 5465
E-mail: support@tp-link.com.au
Service time: 24hrs, 7 days a week

Indonesia
Tel: (+62) 021 6259 135
E-mail: support.id@tp-link.com
Service time: Monday to Friday 9:00 - 12:00; 13:00 - 18:00
* Except public holidays

Russian Federation
Tel: 8 (495) 223-55-60
8 (800) 250-55-60 (toll-free call from any RF region)
E-mail: support.ru@tp-link.com
Service time: From 10:00 to 18:00 (Moscow time)
* Except weekends and holidays in Russian Federation

Switzerland
Tel: +41 (0)848 800998 (German service)
E-mail: support.ch@tp-link.com
Fee: 4-8 Rp/min, depending on rate of different time
Service time: Monday to Friday 9:00 AM to 6:00 PM. GMT+1 or GMT+2 (Daylight Saving Time)

Germany / Austria
Tel: +49 1805 875465 (German Service) / +49 1805 TPLINK
E-mail: support.de@tp-link.com
Fee: 0.14 EUR/min from the German fixed phone network and up to 0.42 EUR/min from mobile phone.
Service time: Monday to Friday 9:00 AM to 6:00 PM. GMT+1 or GMT+2 (Daylight Saving Time in Germany)
* Except bank holidays in Hesse