

TP-LINK®

User Guide

TL-PS110U

Single USB2.0 Port Fast Ethernet Print Server



Rev: 2.0.0

1910010381

COPYRIGHT & TRADEMARKS

Specifications are subject to change without notice. **TP-LINK®** is a registered trademark of TP-LINK TECHNOLOGIES CO., LTD. Other brands and product names are trademarks or registered trademarks of their respective holders.

No part of the specifications may be reproduced in any form or by any means or used to make any derivative such as translation, transformation, or adaptation without permission from TP-LINK TECHNOLOGIES CO., LTD. Copyright © 2010 TP-LINK TECHNOLOGIES CO., LTD. All rights reserved.

<http://www.tp-link.com>

FCC STATEMENT



This equipment has been tested and found to comply with the limits for a Class B digital device, pursuant to part 15 of the FCC Rules. These limits are designed to provide reasonable protection against harmful interference in a residential installation. This equipment generates, uses and can radiate radio frequency energy and, if not installed and used in accordance with the instructions, may cause harmful interference to radio communications. However, there is no guarantee that interference will not occur in a particular installation. If this equipment does cause harmful interference to radio or television reception, which can be determined by turning the equipment off and on, the user is encouraged to try to correct the interference by one or more of the following measures:

- Reorient or relocate the receiving antenna.
- Increase the separation between the equipment and receiver.
- Connect the equipment into an outlet on a circuit different from that to which the receiver is connected.
- Consult the dealer or an experienced radio/ TV technician for help.

This device complies with part 15 of the FCC Rules. Operation is subject to the following two conditions:

- 1) This device may not cause harmful interference.
- 2) This device must accept any interference received, including interference that may cause undesired operation.

Any changes or modifications not expressly approved by the party responsible for compliance could void the user's authority to operate the equipment.

Trademarks

NetWare is a registered trademark of Novell Inc and Windows 95/98/Me and Windows NT/2000/XP /2003/Vista/7 are registered trademarks of Microsoft Corp. All other brands and product names are trademarks or registered trademarks of their respective owners.

Copyright

No part of this publication may be reproduced in any form or by any means or used to make any derivative (such as translation, transformation or adaptation) without the express written consent of the manufacturer as stipulated by the United States Copyright Act of 1976.

FCC RF Radiation Exposure Statement

This equipment complies with FCC RF radiation exposure limits set forth for an uncontrolled environment. This device and its antenna must not be co-located or operating in conjunction with any other antenna or transmitter.

“To comply with FCC RF exposure compliance requirements, this grant is applicable to only Mobile Configurations. The antennas used for this transmitter must be installed to provide a separation distance of at least 20 cm from all persons and must not be co-located or operating in conjunction with any other antenna or transmitter.”

CE Mark Warning



This is a class B product. In a domestic environment, this product may cause radio interference, in which case the user may be required to take adequate measures.

National Restrictions

2400.0-2483.5 MHz

Country	Restriction	Reason/remark
Bulgaria		General authorization required for outdoor use and public service
France	Outdoor use limited to 10 mW e.i.r.p. within the band 2454-2483.5 MHz	Military Radiolocation use. Refarming of the 2.4 GHz band has been ongoing in recent years to allow current relaxed regulation. Full implementation planned 2012
Italy		If used outside of own premises, general authorization is required
Luxembourg	None	General authorization required for network and service supply(not for spectrum)
Norway	Implemented	This subsection does not apply for the geographical area within a radius of 20 km from the centre of Ny-Ålesund
Russian Federation		Only for indoor applications

Note: It not used outdoors in France.

All contents and specifications are subject to change without notice.

CONTENTS

Chapter 1. Introduction.....	1
1.1 Product Overview	1
1.2 Components and Features	1
1.3 LED Indicator	1
1.4 Factory Defaults	1
Chapter 2. Hardware Installation	2
2.1 Preparation	2
2.2 Connection	2
Chapter 3. How to Configure the Print Server	3
3.1 Using PSWizard in Windows XP/ Windows Vista/ Windows 7	3
3.2 Using Web Management Page in Windows XP/ Windows Vista/ Windows 7	14
3.3 Using Web Management Page on MAC OS	20
3.4 Printer Installation.....	27
3.4.1 If You Have Installed A Printer Before.....	27
3.4.2 If You Never Install A Printer Before.....	32
Chapter 4. More Configuration for the Print Server	38
4.1 Login.....	38
4.2 Status	39
4.2.1 System.....	40
4.2.2 Printer	41
4.2.3 TCP/IP	42
4.3 Setup	42
4.3.1 System.....	42
4.3.2 TCP/IP	43
4.4 Misc	44
4.4.1 Factory Default	44
4.4.2 Firmware Upgrade	45
4.5 Restart.....	46
Appendix A: How to Reset the Print Server	47
Appendix B: Troubleshooting	48
Appendix C: Frequently Asked Questions.....	51
Appendix D: Additional Installation Instructions.....	53

Chapter 1. Introduction

1.1 Product Overview

The external print servers enhance capability by letting you place your printers at convenient locations directly on the Ethernet network, and by increasing network printer performance and management. Please note that the print server does not support printing with host-based printers, e.g. CAPT, GDI, PPA.

1.2 Components and Features

- One USB2.0 port
- Fast Ethernet network port: RJ-45 for 10Base-T or 100Base-TX
- One Setup CD contains driver and manual for Windows system
- One external AC power adapter
- Built-in Reset Button
- One Quick Installation Guide

1.3 LED Indicator

LED	Status	Indication
Status	Blinking (Orange)	When power switched on, the Status indicator will flash five times, and then on.
100Mbps	On (Green)	LAN Port has a valid network connection at 100Mbps.
10Mbps	On (Orange)	LAN Port has a valid network connection at 10Mbps.
USB	On (Green)	Connect with USB2.0 printer
	On (Orange)	Connect with USB1.1 printer

 **Note:**

The **Status** LED should be flash **five** times when POST. If not, please contact your local dealer for repair or replacement.

1.4 Factory Defaults

- Username: admin
- IP Address: 192.168.0.10
- Subnet Mask: 255.255.255.0

 **Note:**

The TL-PS110U is produced without password by default.

Chapter 2. Hardware Installation

2.1 Preparation

Before you start, you should prepare the following items:

- One printer with USB port
- One USB printer cable
- One Router

2.2 Connection

Follow the instructions below to connect the print server. Figure 2-1 is a typical typology for the print server.

- Power off the printer.
- Connect the print server to your printer with the USB cable.
- Connect the print server to your Router with an Ethernet cable.
- Power on the printer.
- Power on print server.
- Wait 40 seconds as part of the print server's Power On Self Test (POST).

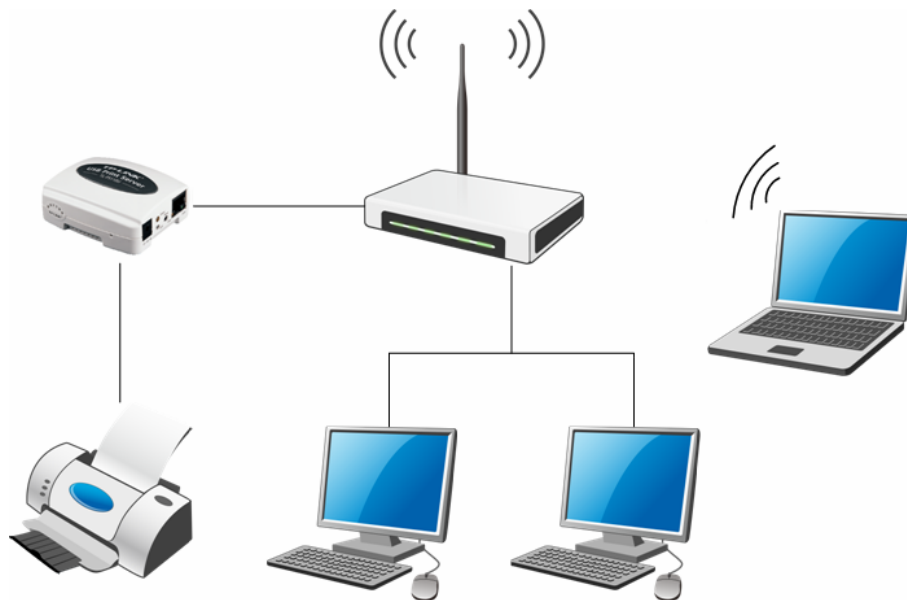


Figure 2-1

Note:

The TL-PS110U is produced without password by default.

Chapter 3. How to Configure the Print Server

3.1 Using PSWizard in Windows XP/ Windows Vista/ Windows 7

To connect to the print server using PSWizard, the configuration for Windows XP, Windows Vista and Windows 7 are similar. Here take Windows XP for example.

1. Insert the setup CD into your CD-drive. The autorun program will be started as shown in Figure 3-1. Select the model (**TL-PS110U**) of your print sever.



Figure 3-1

2. Choose Setup Wizard.



Figure 3-2

Note:

For setup wizard under Windows Vista, you have to choose the **Run as administrator** by right-click the icon on desktop.

- Then you will enter to the “**Welcome**” page as shown in Figure 3-3. Click **Next**.



Figure 3-3

- From the “**Select A Print Server**” screen as shown in Figure 3-4, select the print server that you want to configure and click **Next**.

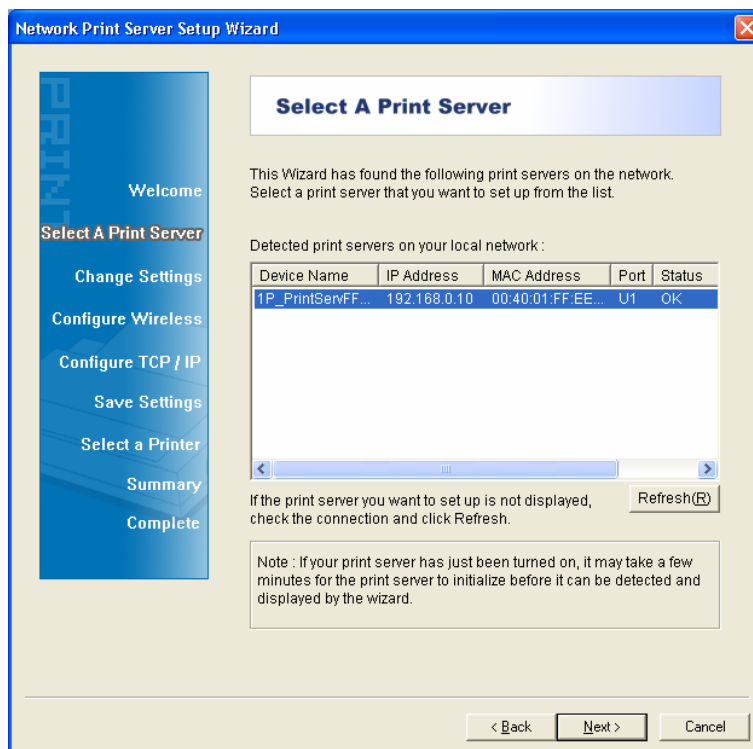


Figure 3-4

5. On the **Change Settings** screen as shown in Figure 3-5, select **Yes** or **No**.
 - Select “**Yes**” if you want to change the settings. The TL-PS110U is produced without password. Click **Next** and then appears “**TCP/IP Settings**” screen as shown in Figure 3-6. Proceed with the following steps.
 - Select “**No**” if you don’t need to change any settings. Click **Next** and then appears Figure 3-9. Skip to Step 8.

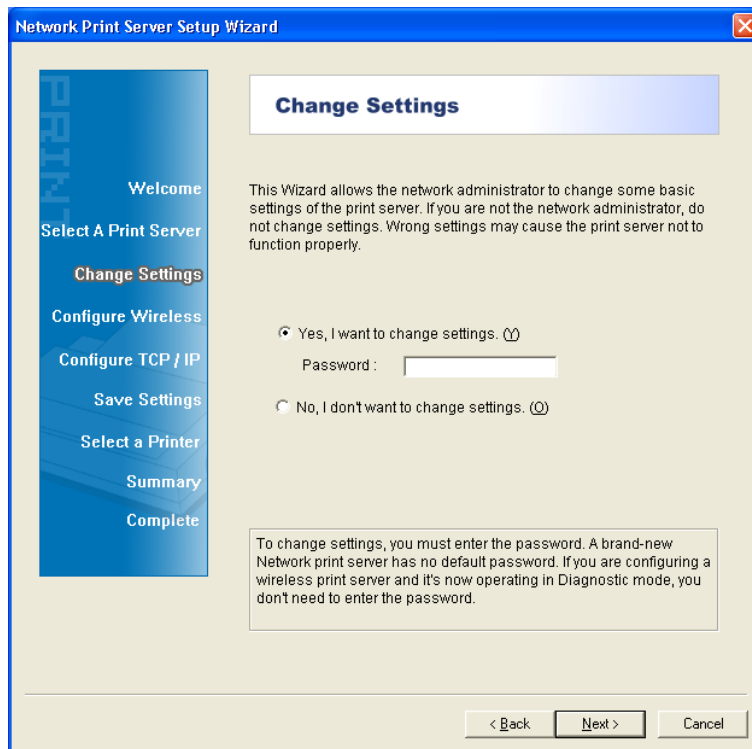


Figure 3-5

6. On “**TCP/IP Settings**” page shown in Figure 3-6, check the “**Specify an IP address**” radio button, and then fill in the following parameters.
 - **IP Address:** Specify an IP address for your print server. The IP address must be within the same subnet as your Router. For example, if the LAN IP address of your Router is **192.168.1.1**, the IP address should be set to **192.168.1.X** (1<X<255). **192.168.1.10** is suggested.
 - **Mask IP Address:** Enter the subnet mask of your network.
 - **Gateway IP Address:** Enter the LAN IP address of your Router. Here takes 192.168.1.1 for example.

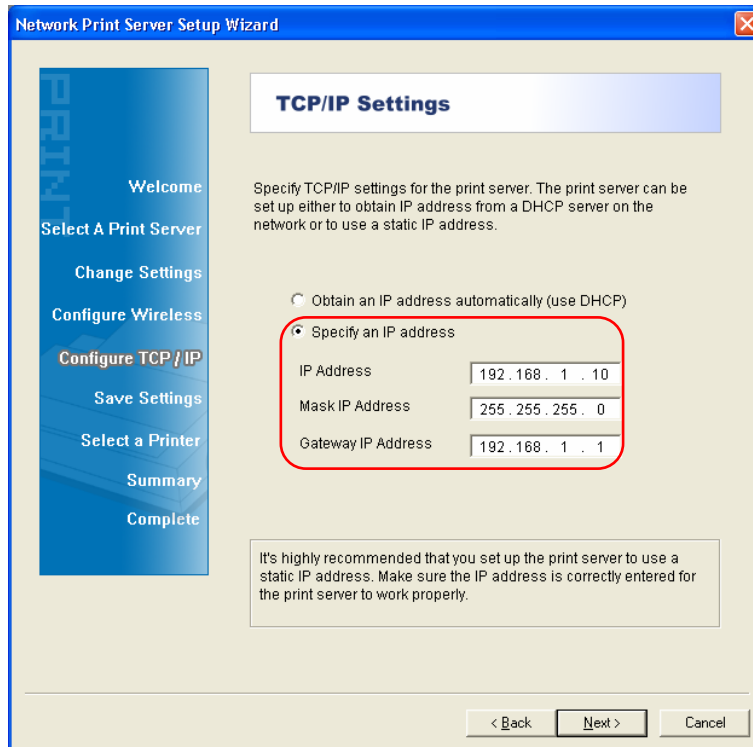


Figure 3-6

7. Confirm your settings on the screen in Figure 3-7. Click **Next** and your changes will be saved as shown in Figure 3-8.

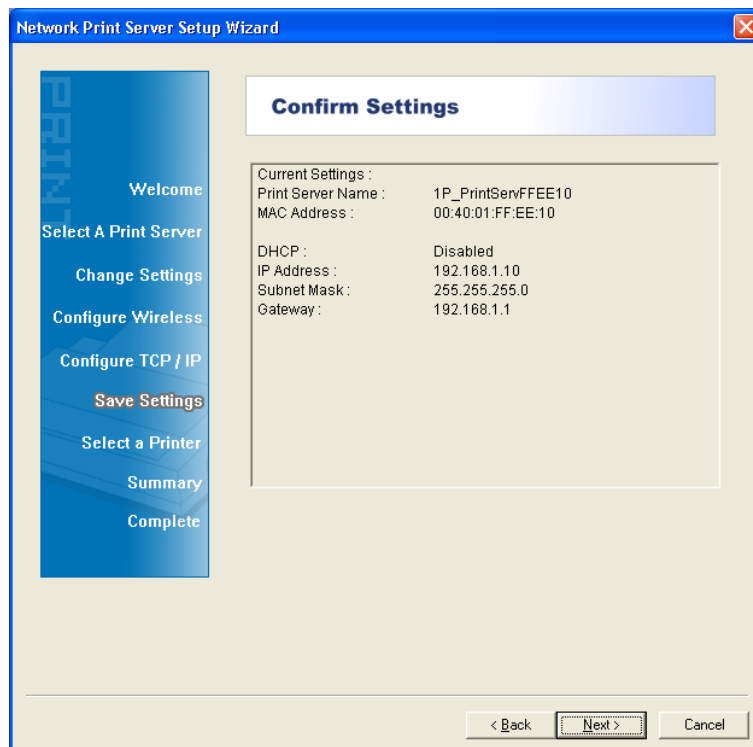


Figure 3-7

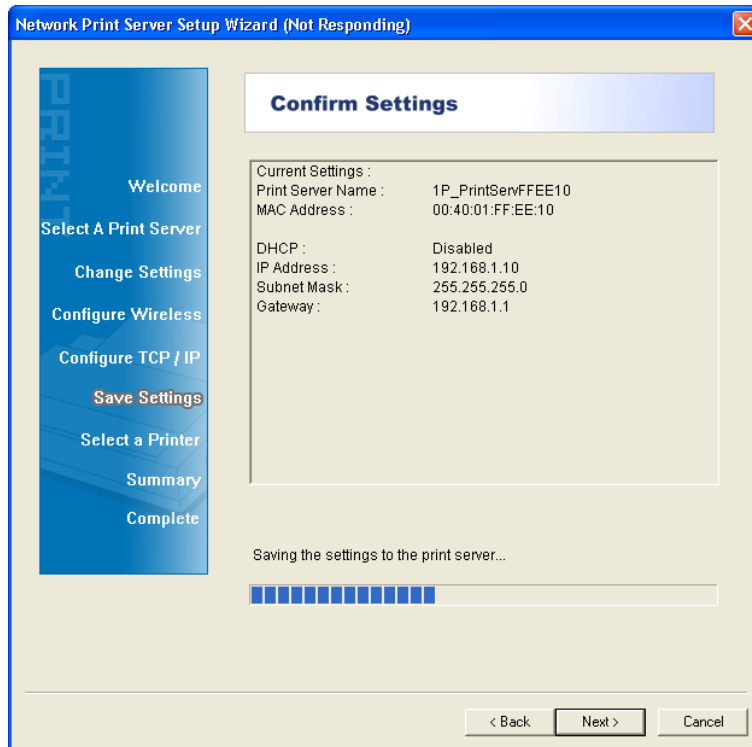


Figure 3-8

8. After that the “**Select a Printer**” page will appear, as shown in Figure 3-9.
 - If the printer desired has already existed in the list, select it and then click **Next** and skip to Step 16 to complete the installation.
 - If you never use a printer on your computer before but also want to share printing, click **Add New Printer** button in Figure 3-9 and then Figure 3-11 appears. Follow the steps below to install the printer driver.

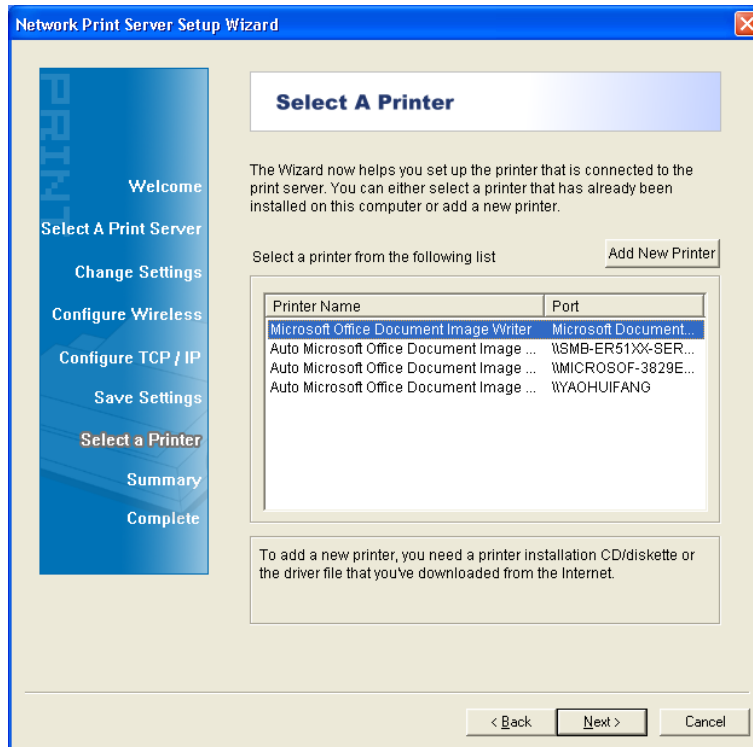


Figure 3-9

Note:

To add a new printer, you can also go **Start > Printers and Faxes**, and then click **“Add a printer”** on the left to begin the following installation as shown in Figure 3-10.

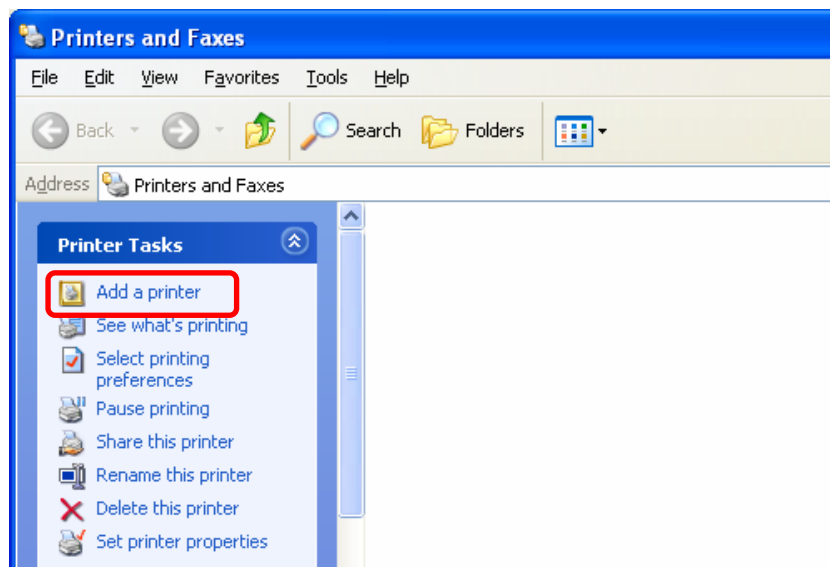


Figure 3-10

9. Click **Add New Printer** to launch **Windows Add Printer Wizard**. Click **Next**.



Figure 3-11

10. Make sure the **Automatically detect and install my Plug and Play printer** check box is **NOT** checked. Then click **Next**.

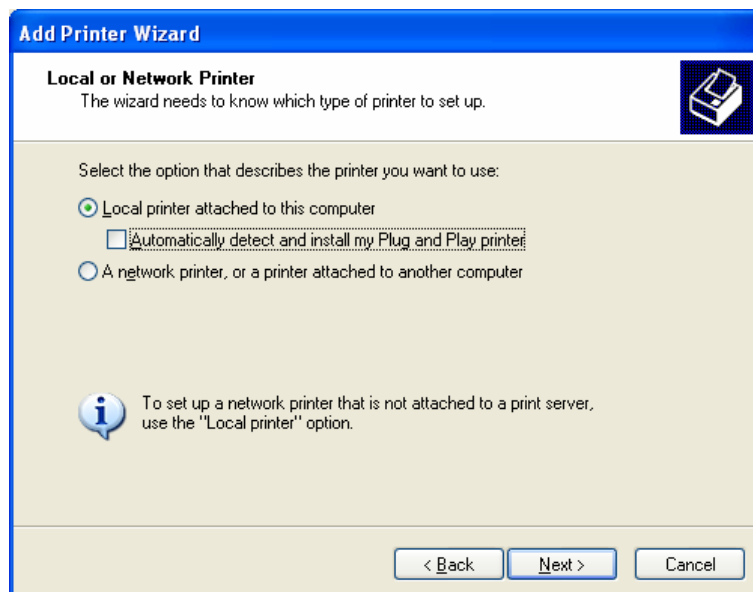


Figure 3-12

11. Check **"Use the following port"** radio button and select **"LPT1: (Recommended Printer Port)"** from the pull-down list. Then click **Next**.

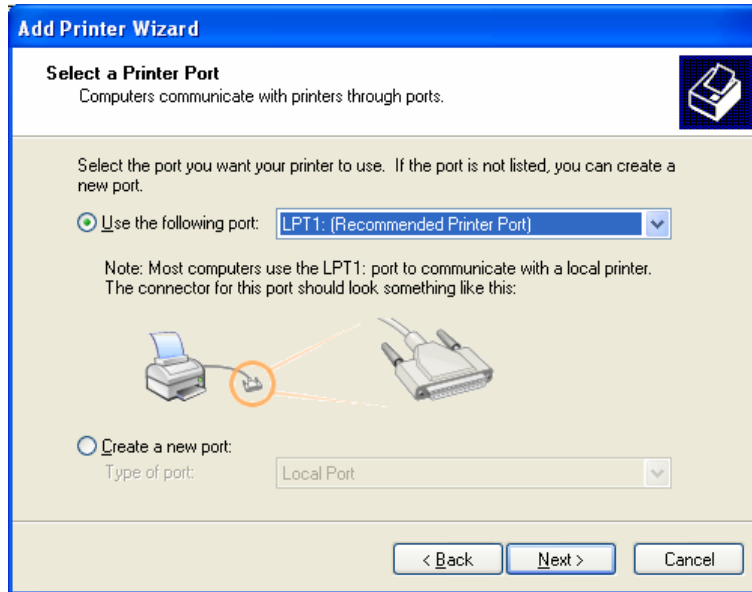


Figure 3-13

12. Select **Manufacturer** and **Printer** from the lists of printer's driver. Then click **Next**.

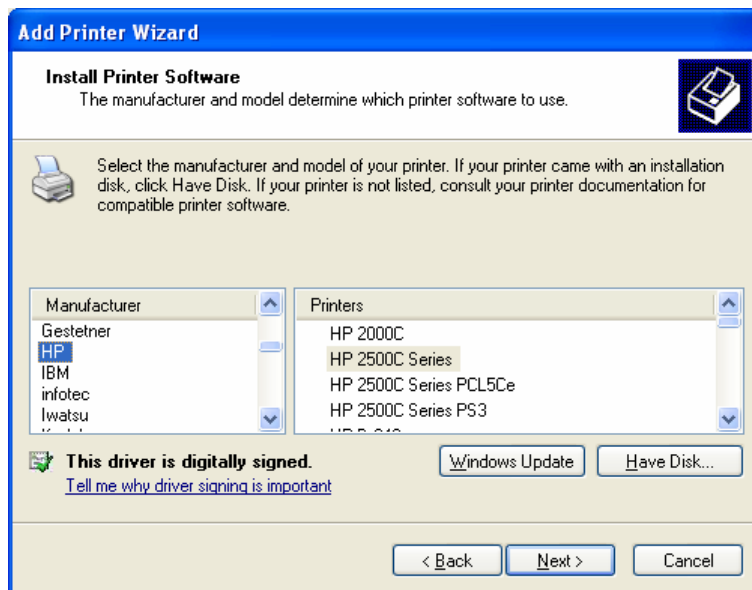


Figure 3-14

13. If you already have the printer's driver installed, you will be asked whether to keep it or to replace it. Click **Next**. Supply a name for the printer and choose whether you want to make it your default printer. Then click **Next**.

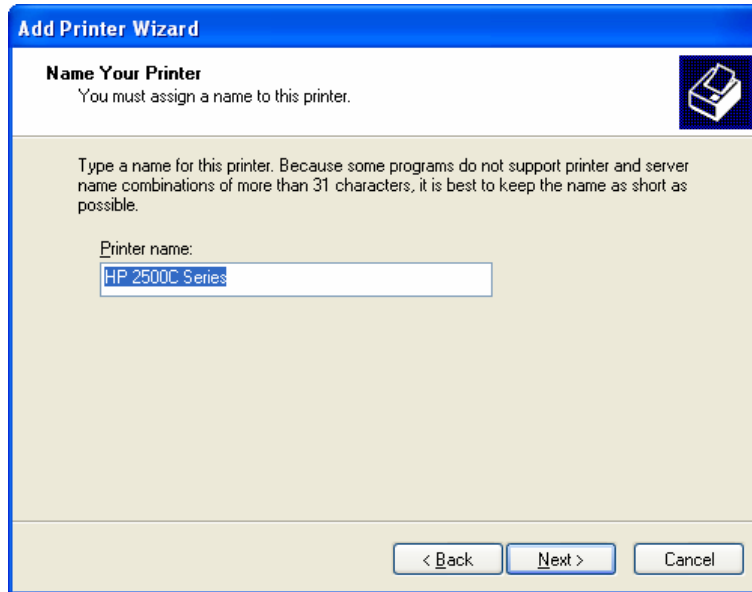


Figure 3-15

14. Then, choose whether you want to share the printer with other network users, print a test page (please select **No.**), etc. Select the appropriate radio-button and click **Next**.

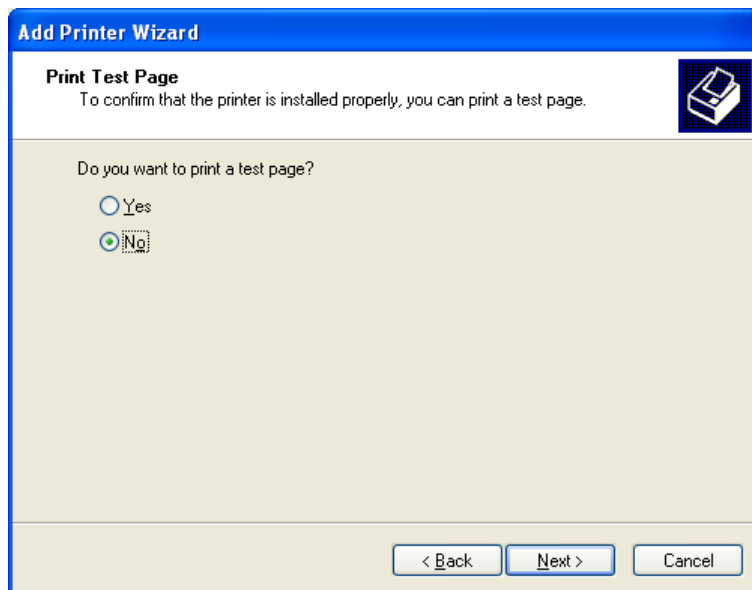


Figure 3-16

15. Click **Finish**.

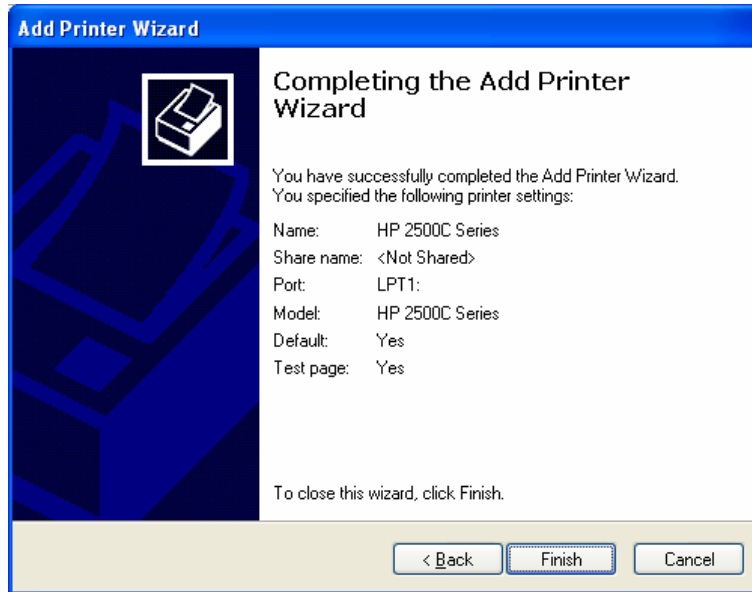


Figure 3-17

- Then you will see the printer be added to the list. Select the printer and click **Next**. Follow the step by step instruction to finish the installation.

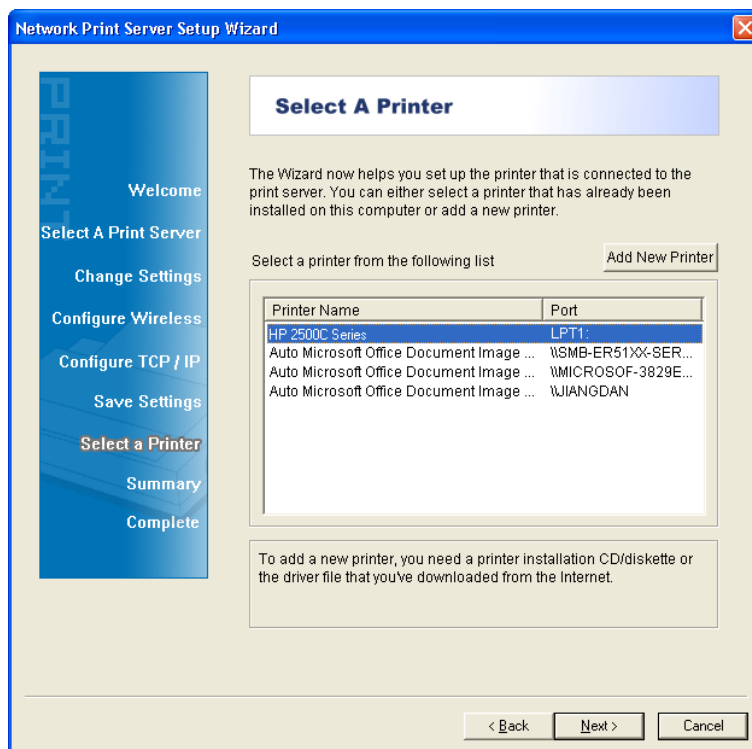


Figure 3-18

- From Windows system, go to **Start > Printers and Faxes** and highlight your newly installed printer. Right-click it, and then select **Properties**.

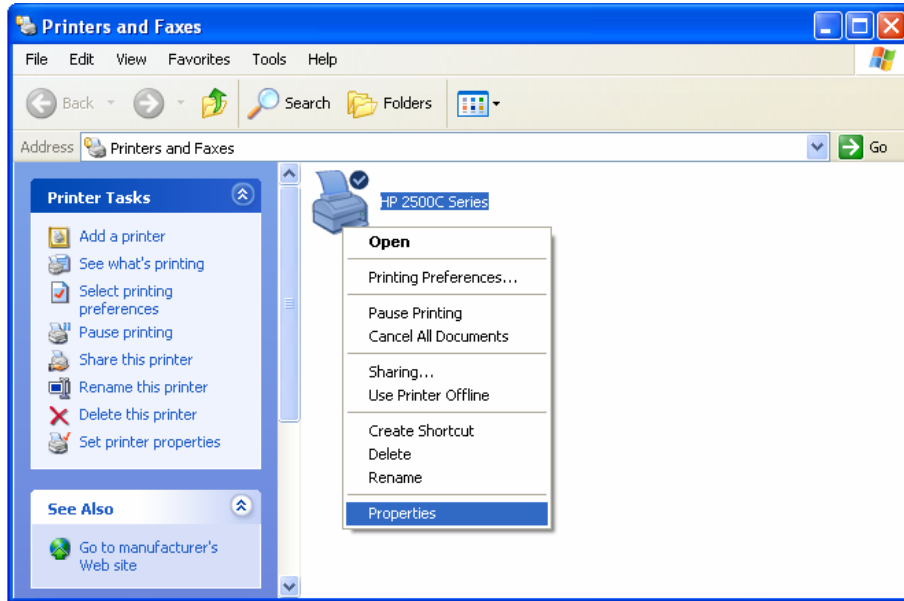


Figure 3-19

18. Select **Ports** and verify that the print server's port appears.

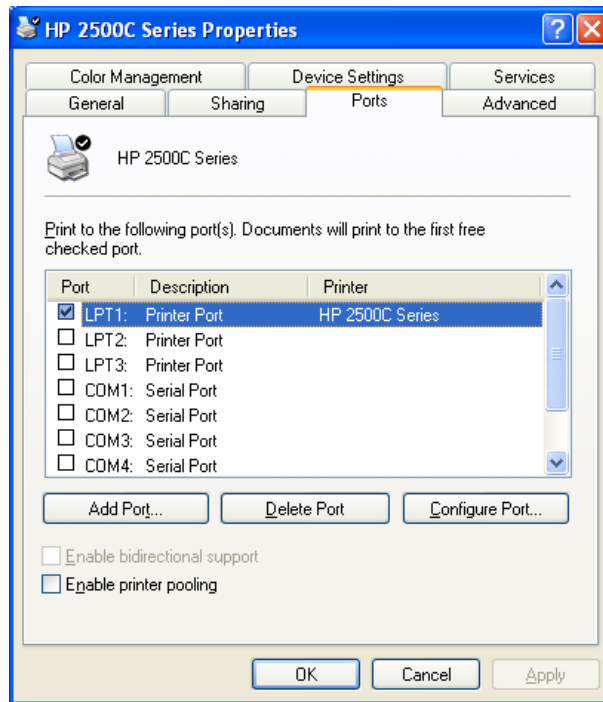


Figure 3-20

19. Go to **General**; click **Print Test Page** to verify the configuration.

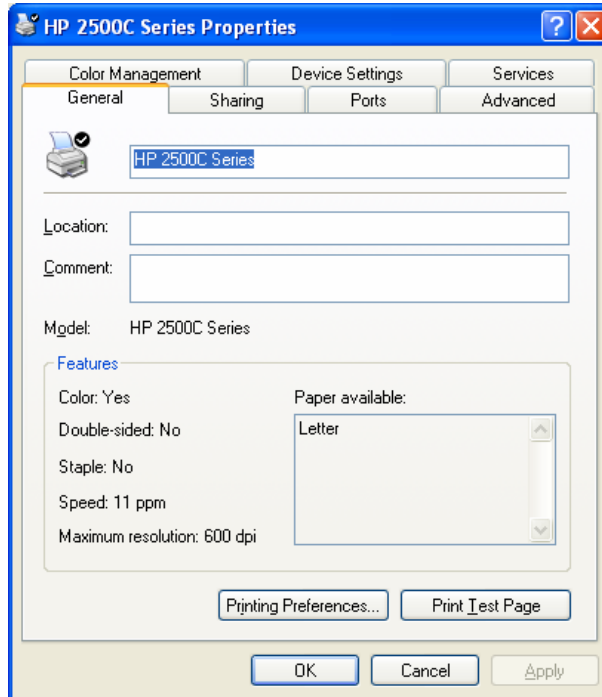


Figure 3-21

Note:

If you wish to install more print servers, repeat the above steps.

3.2 Using Web Management Page in Windows XP/ Windows Vista/ Windows 7

To connect to the print server using the web management page, the configuration for Windows XP, Windows Vista and Windows 7 are similar. Here take Windows XP for example.

1. On the Windows taskbar, click the **Start->Control Panel**.

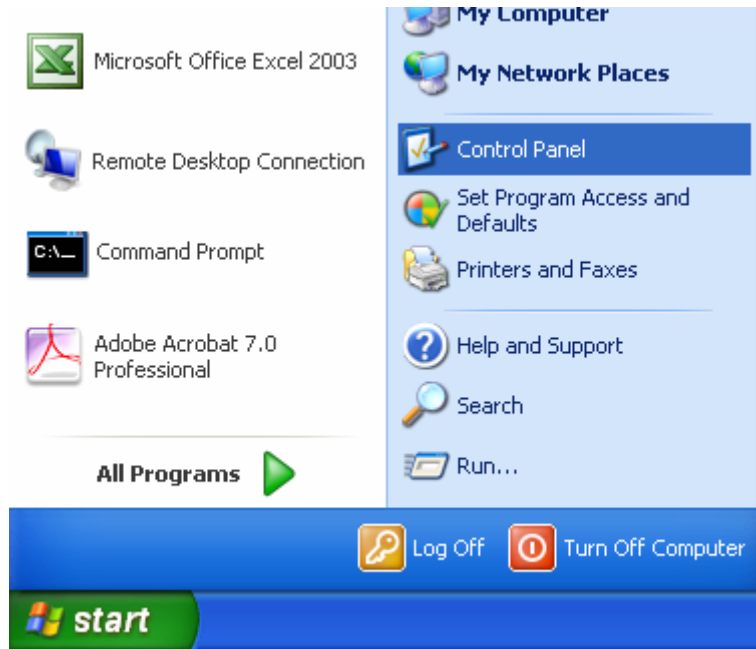


Figure 3-22

2. Select and double-click **Networking Connections**.



Figure 3-23

3. Right click **Wireless Network Connection**, and select **Properties**.



Figure 3-24

4. Select **Internet Protocol (TCP/IP)**, and then double click it or click **Properties**.

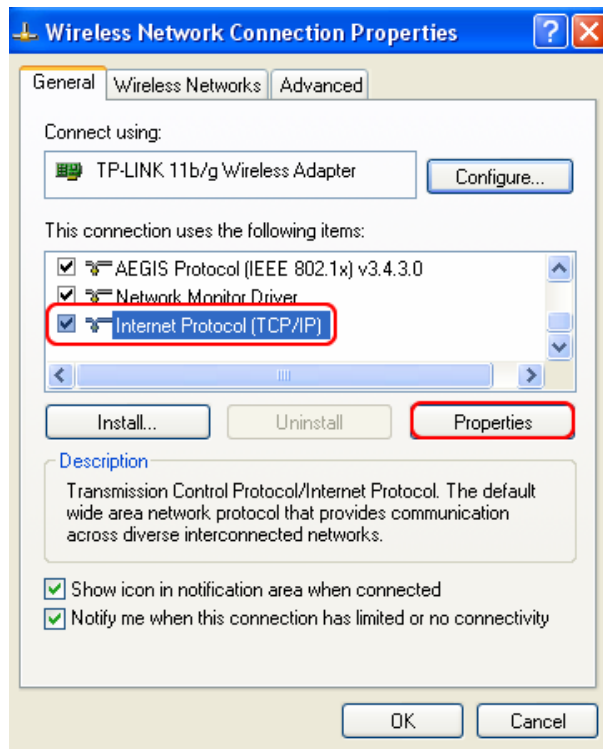


Figure 3-25

5. Select "Use the following IP address" and input a static IP address **192.168.0.X** ($1 < X < 10$ or $10 < X < 255$, for 192.168.0.10 is the default IP address of the print server), Subnet mask **255.255.255.0**. Click **OK**.

Note:

The IP address must be within the same subnet as your wireless print server. For example, if the IP address of your printer server has been changed to **192.168.1.10**, then the IP address should be configured as **192.168.1.X** ($1 < X < 10$ or $10 < X < 255$).

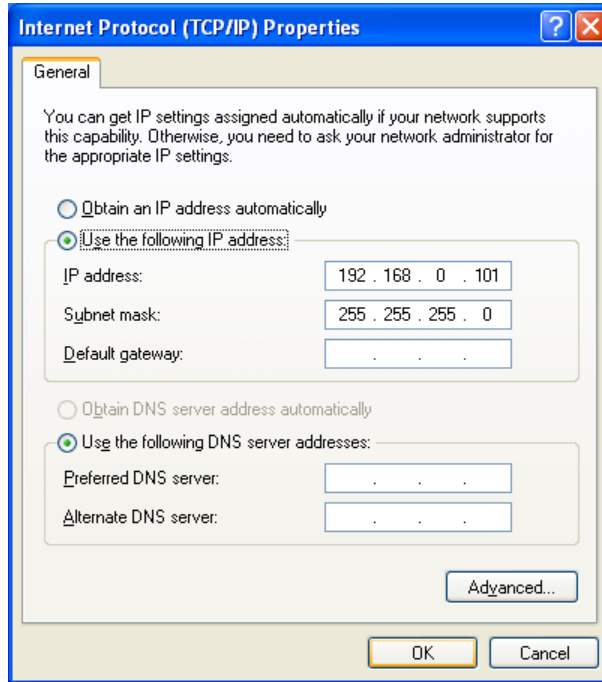


Figure 3-26

- Open a web-browser and type in the IP address of the print server (the default is 192.168.0.10) in the address field of the browser to login to the web management of the print server.



Figure 3-27

- After a moment, a login window will appear, similar to the Figure 3-28. Enter **admin** in lower case letters for the User Name. Then click the **OK** button or press the **Enter** key.



Figure 3-28

8. Then the print server web management page will appear, with which you can configure all print server settings.

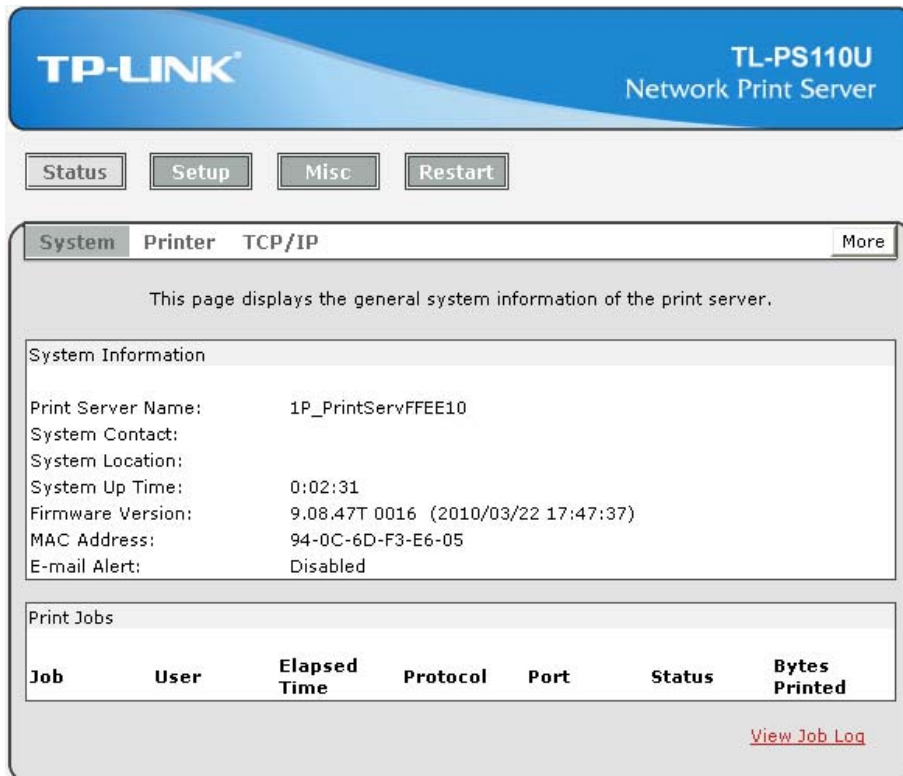


Figure 3-29

9. Click **“Setup”** and then choose **“TCP/IP”**. Check **“Use the following TCP/IP Settings”** radio button and then fill in the following parameters.
 - **IP Address:** Specify an IP address for your print server. The IP address must be within the same subnet as your Router. For example, if the LAN IP address of your Router is **192.168.1.1**, the IP address should be set to **192.168.1.X** (1<X<255). **192.168.1.10** is suggested.
 - **Subnet Mask:** Enter the subnet mask of your network.
 - **Default Router:** Enter the LAN IP address of your wireless router or access point. Here takes 192.168.1.1 for example.

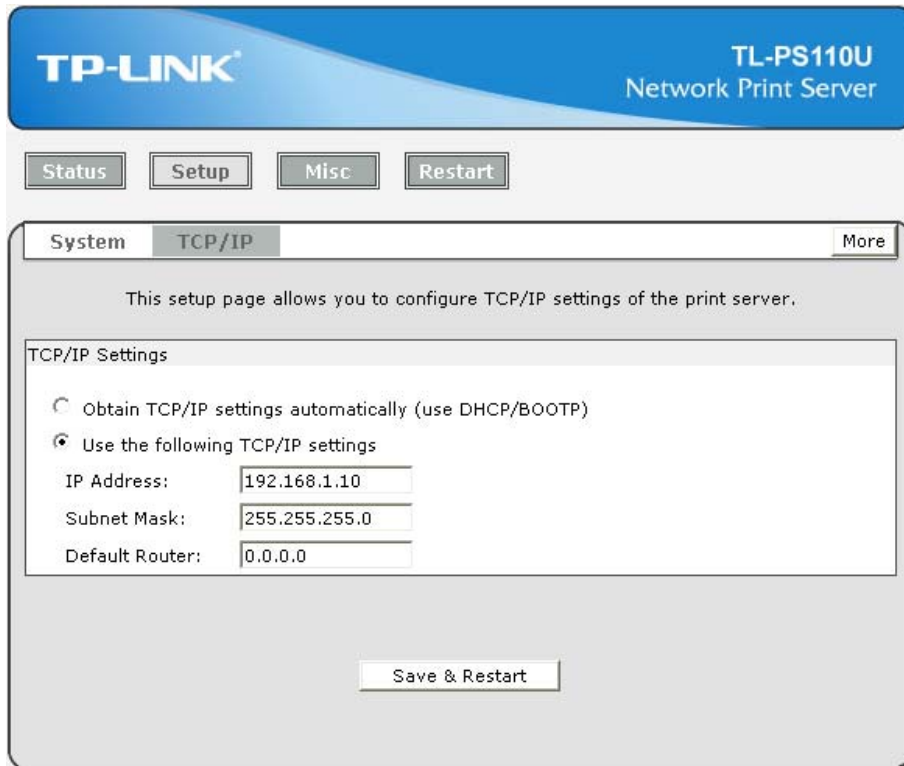


Figure 3-30

10. Click **Save & Restart** and then wait the print server to save the changes and restart.

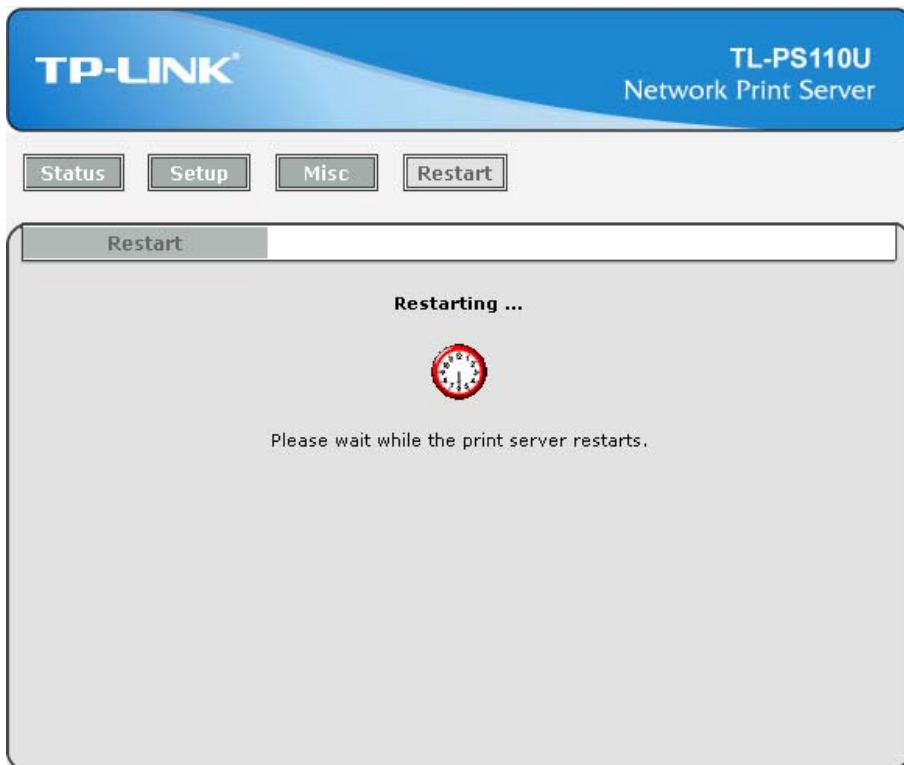


Figure 3-31

11. Enter the “**Internet Protocol (TCP/IP) Properties**” page as shown in Figure 3-32. Fill in the following parameters.

- **IP Address:** Specify an IP address for your adapter. The IP address must be within the same subnet as your Router. For example, if the LAN IP address of your Router is **192.168.1.1**, the IP address should be set to **192.168.1.X** (1<X<10 or 10<X<255, for 192.168.1.10 has been specified for your print server). Here we take 192.168.1.101 for example.
- **Subnet Mask:** Enter the subnet mask of your network.
- **Default Gateway:** Enter the LAN IP address of your wireless router or access point. Here takes 192.168.1.1 for example.

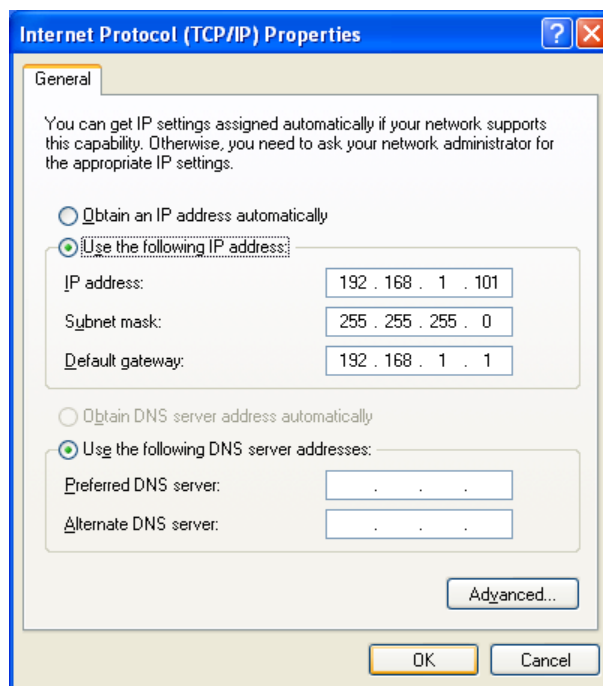


Figure 3-32

12. Add a Standard TCP/IP port for the printer.

- If you’ve already installed the printer on your computer, please refer to [3.4.1 If You Have Installed A Printer Before](#) to add a Standard TCP/IP port.
- If you never install a printer on your computer, please refer to [3.4.2 If You Never Install A Printer Before](#) to add a Standard TCP/IP port.

3.3 Using Web Management Page on MAC OS

1. Click the **Apple Icon** on the left side of the top-bar, and then choose **System Preferences**.

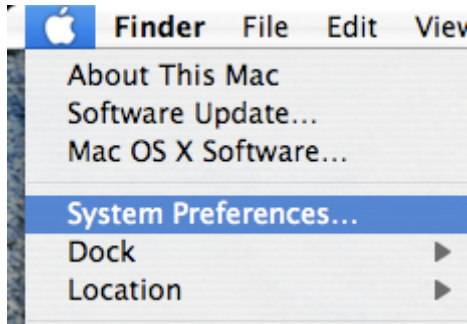


Figure 3-33

2. On the new window, please choose **Network**.



Figure 3-34

3. Follow the steps to set the airport's IP address.

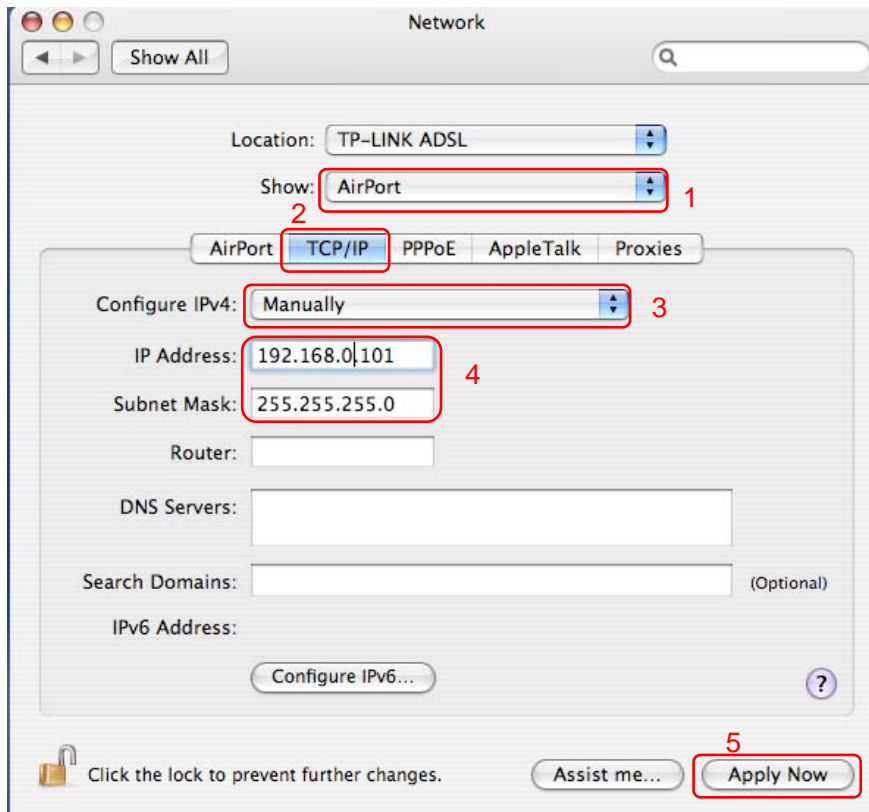


Figure 3-35

4. Open the Safari and log into the TL-PS110U. Change its IP Address, Subnet Mask and Default Router to **192.168.1.10**, **255.255.255.0** and **192.168.1.1**. After the configuration, click **Save & Restart**.

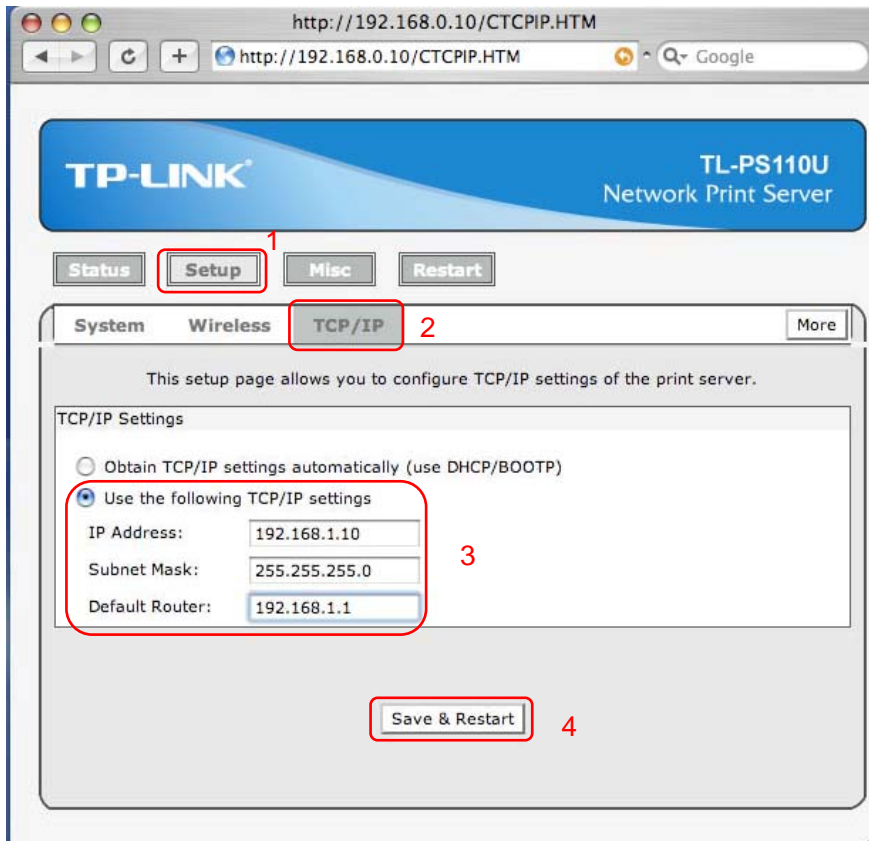


Figure 3-36

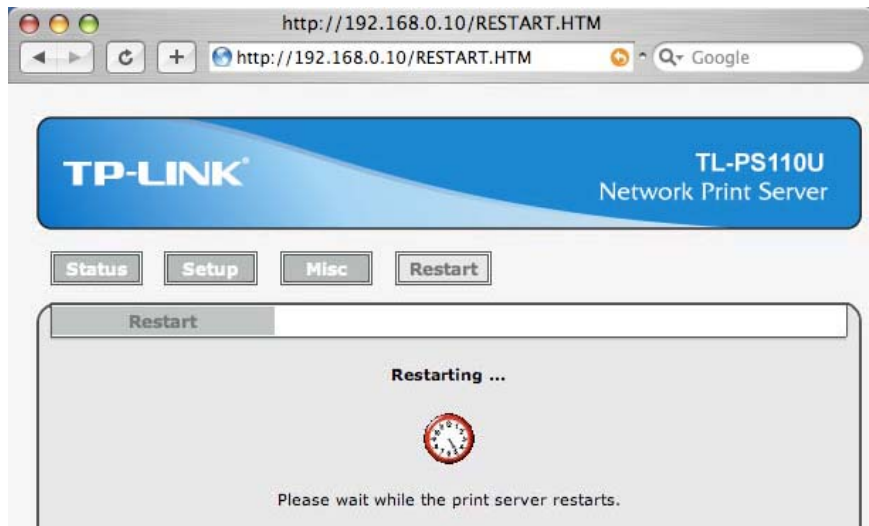


Figure 3-37

5. On the MACbook, change the airport's IP Address, Subnet Mask and Router to **192.168.1.101**, **255.255.255.0** and **192.168.1.1**.

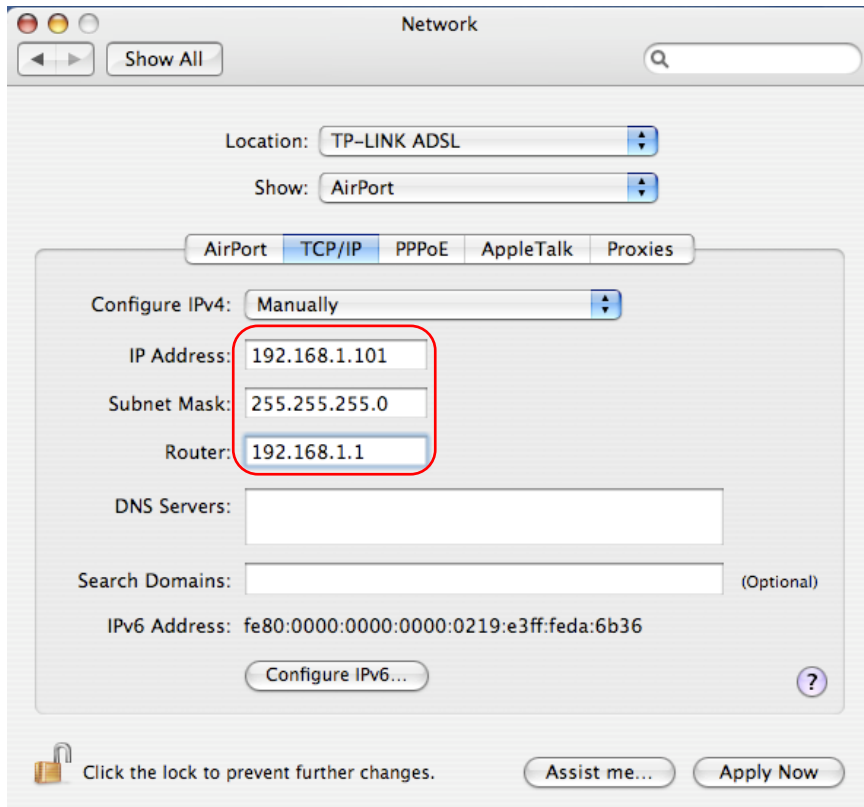


Figure 3-38

6. Click the **Apple icon** > **System Performances** > **Print & Fax** to add a Standard TCP/IP port for the printer.

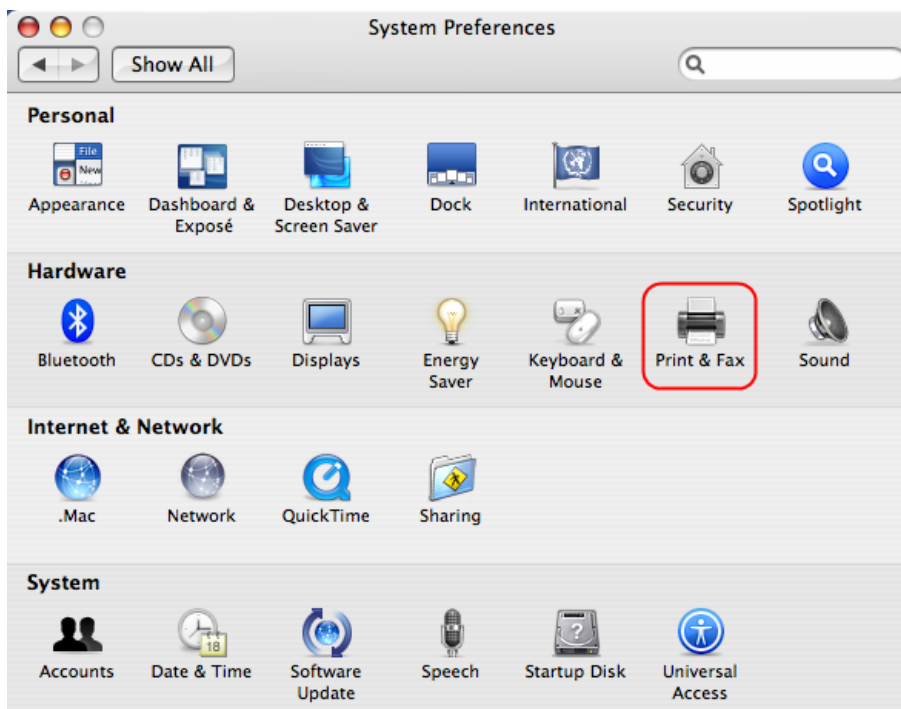


Figure 3-39

- Click **Printing** and then **+**.

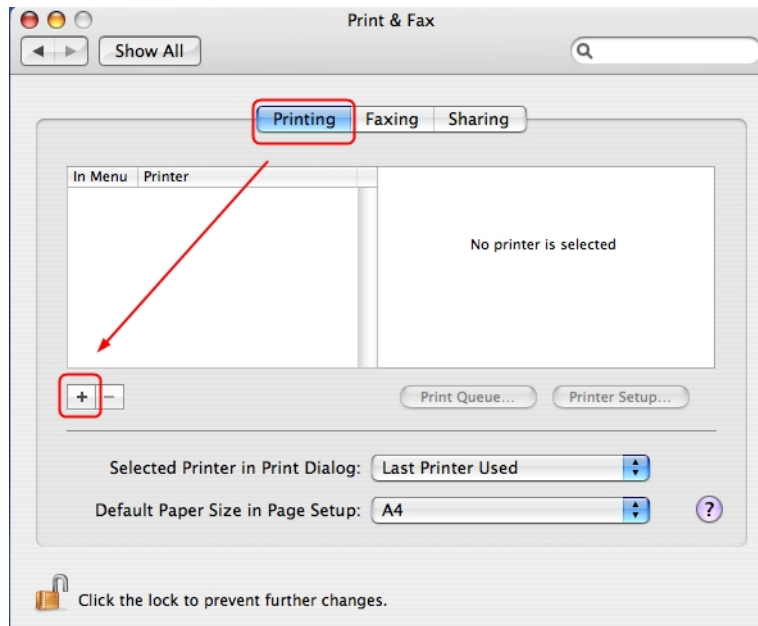


Figure 3-40

- Select **IP Printer**, and then configure the following parameters. Select **LPD** for Protocol, enter **192.168.1.10** for Address and **lp1** for Queue. Select your printer model from the list. Here takes EPSON Style Photo 720 for example. And then click **Add**.

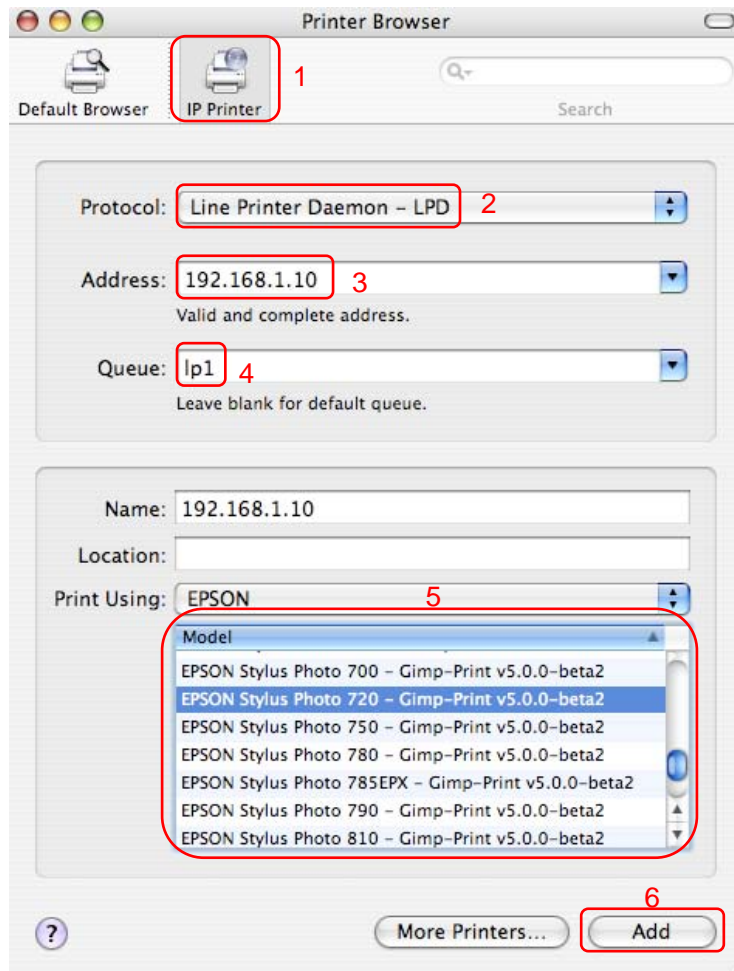


Figure 3-41

9. Till now you've installed the print server successfully and can print through the TL-PS110U.

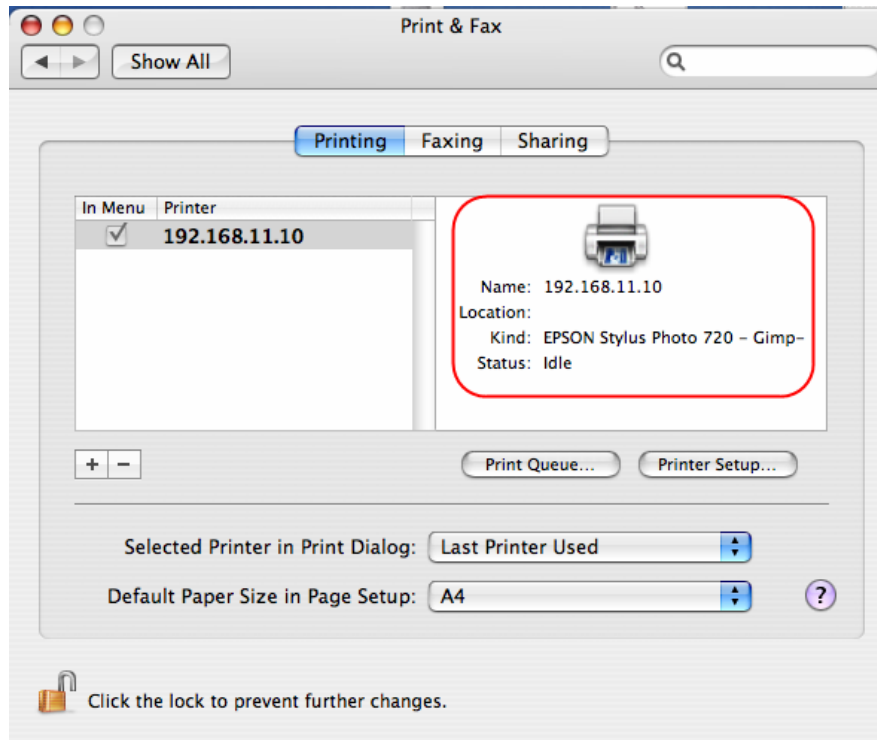


Figure 3-42

3.4 Printer Installation

Other computers in the same local network that need to share the printing should add the Standard TCP/IP port on their system. There're two conditions. Please choose one according to your system. In this section, we take Windows Vista for example.

[Section 3.4.1](#) is on the precondition that you have ever installed a printer driver and now you want to use a print server to share the printer through your network. You need to change the printer port to Standard TCP/IP port.

[Section 3.4.2](#) is on the precondition that you never use the printer on your computer before but also want to share printing. You just need to add a printer, follow the steps to create a Standard TCP/IP port, and then install the printer driver.

3.4.1 If You Have Installed A Printer Before

1. Click **Start > Control Panel > Classic View > Printers**.

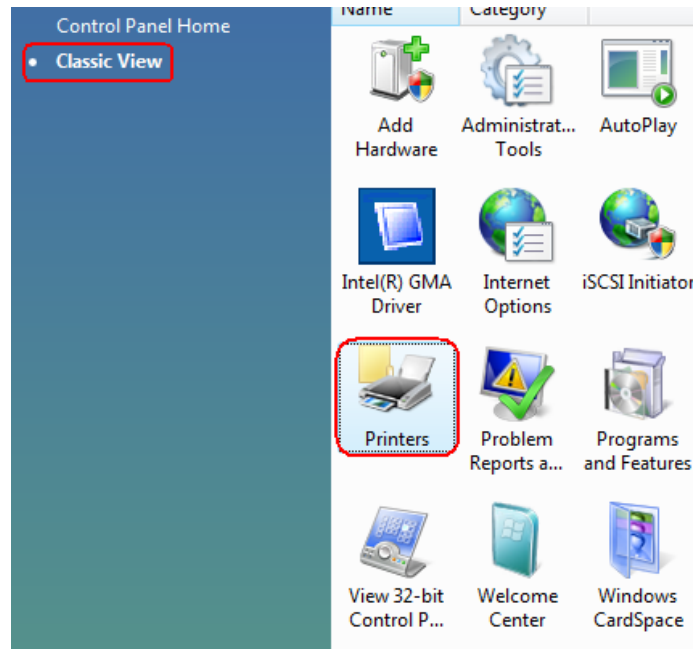


Figure 3-43

2. Find your installed printer icon, **right-click** on it, and select **Properties**.

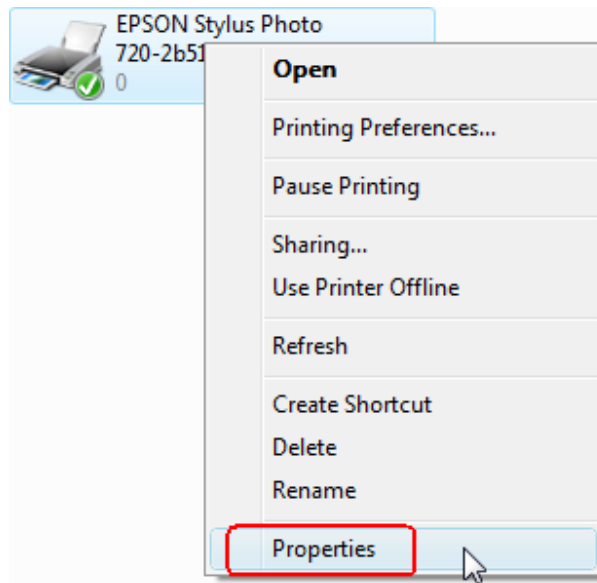


Figure 3-44

3. Click **Ports > Add Port > Standard TCP/IP Port > New Port > Next**.

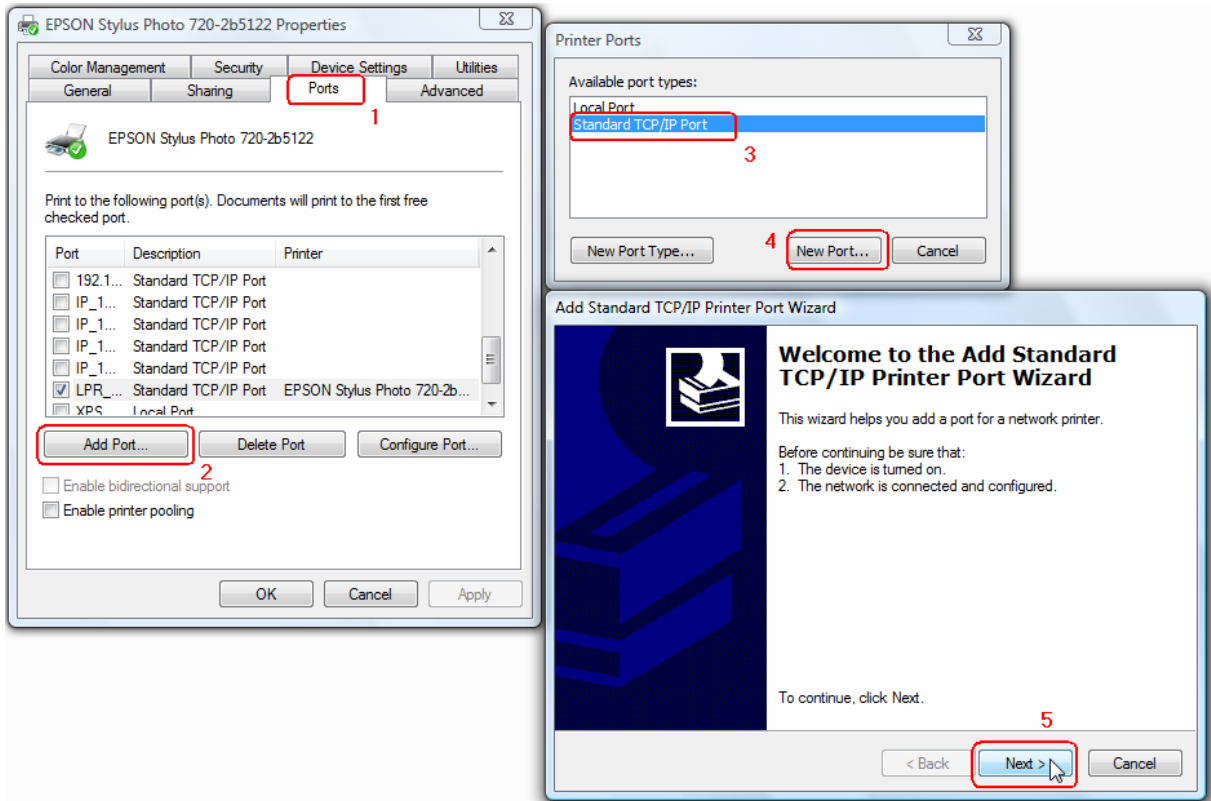


Figure 3-45

4. Input the exact **IP address** of print server. Here takes 192.168.0.10 for example. Click **Next**.

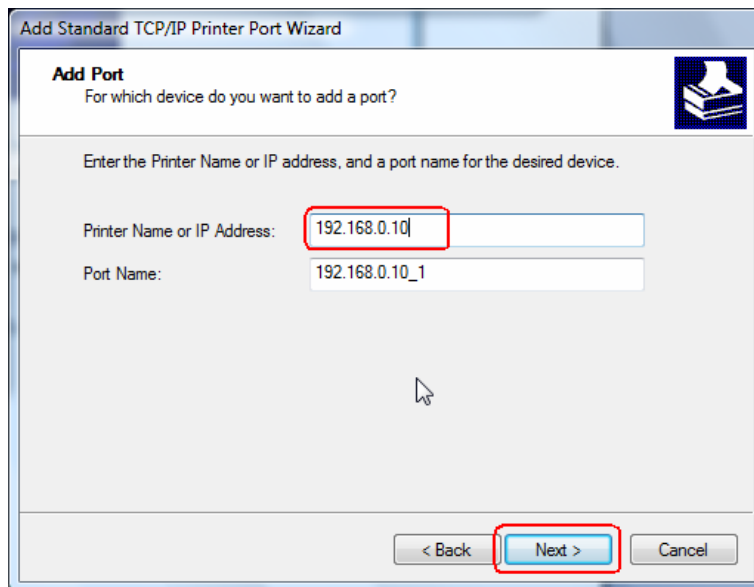


Figure 3-46

5. Select **Custom**, and click **Settings**.

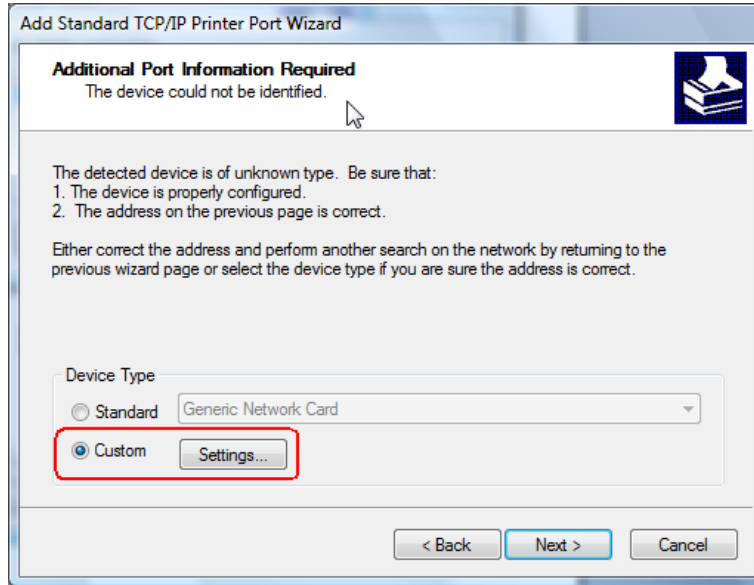


Figure 3-47

6. Choose **LPR**, and input the queue name as **lp1**. Click **OK**.

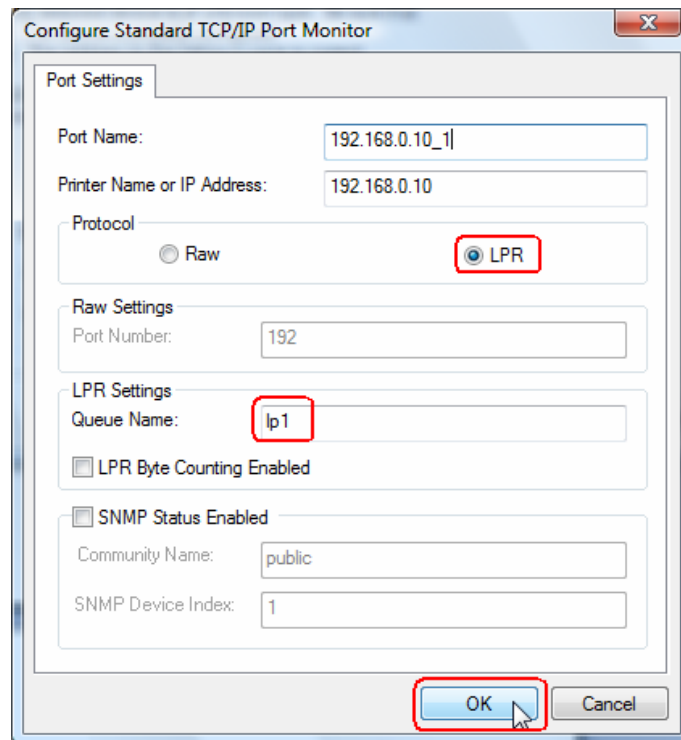


Figure 3-48

7. Click **Next** and then **Finish**, to complete the wizard.

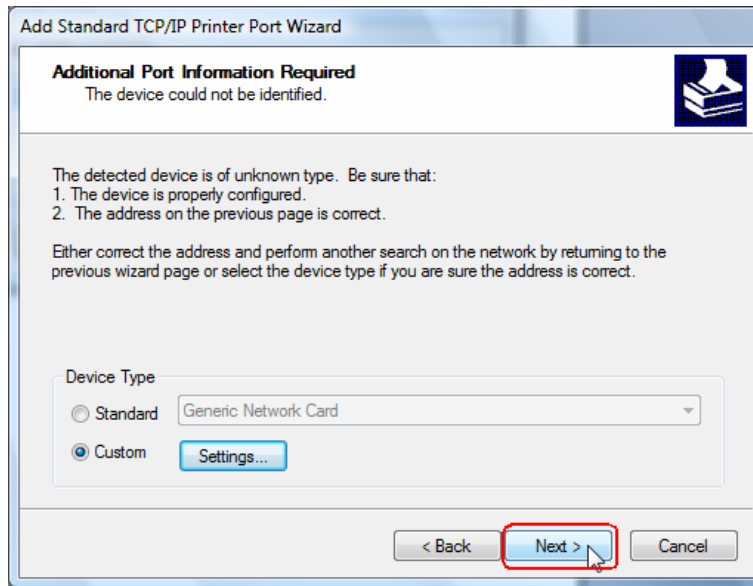


Figure 3-49

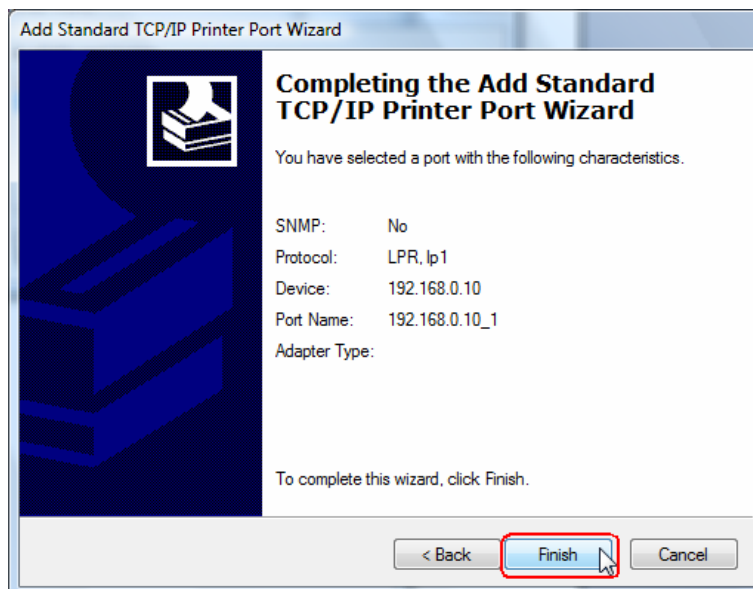


Figure 3-50

8. Click **Close** and **Apply**.

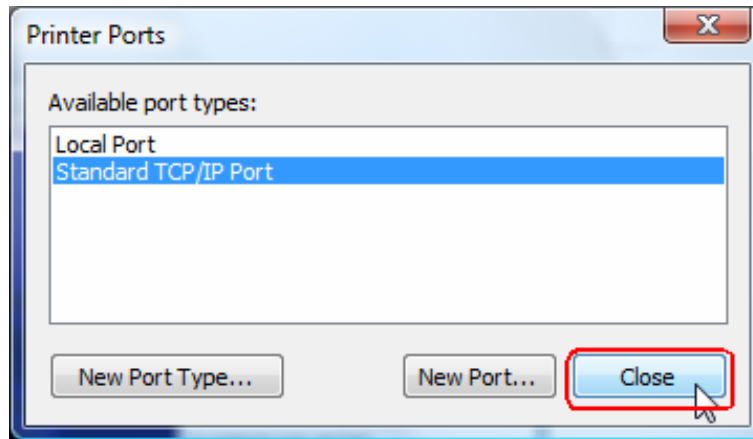


Figure 3-51

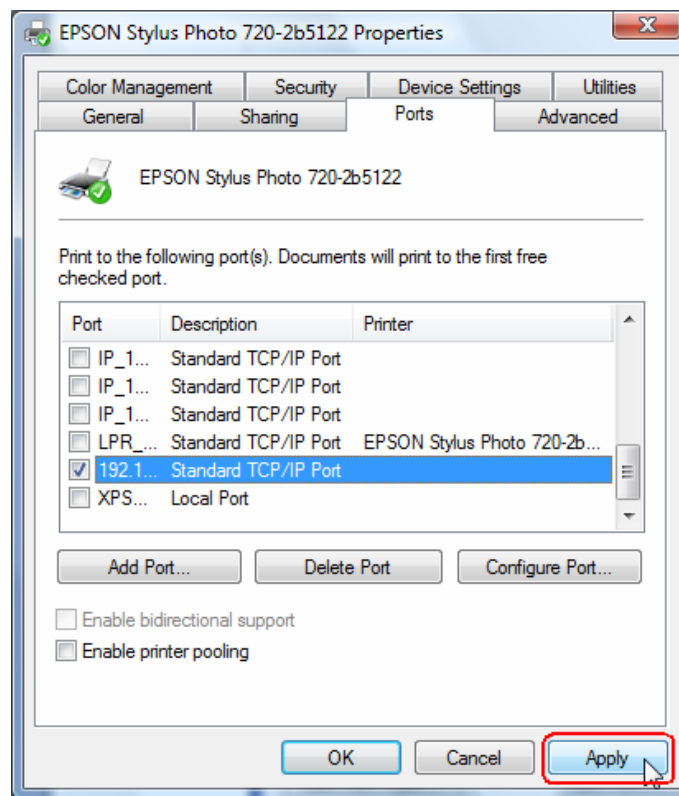


Figure 3-52

9. Now, the printer port has been created.

3.4.2 If You Never Install A Printer Before

1. Click **Star > Control Panel**, and select **Devices and Printers**.

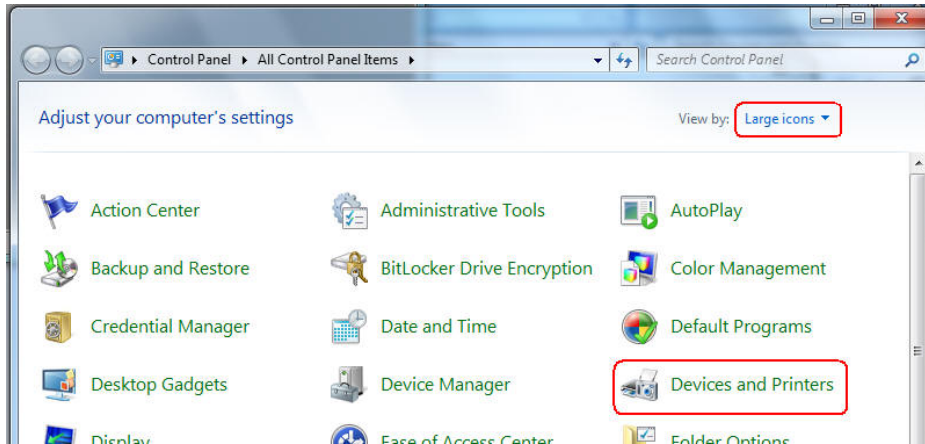


Figure 3-53

2. Click **Add a printer**.

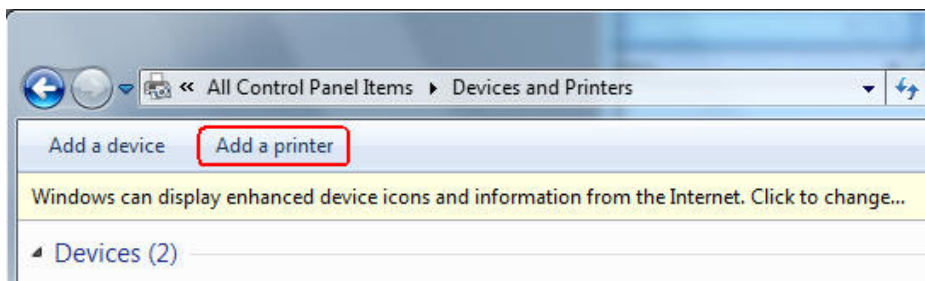


Figure 3-54

3. Select **Add a local printer**.

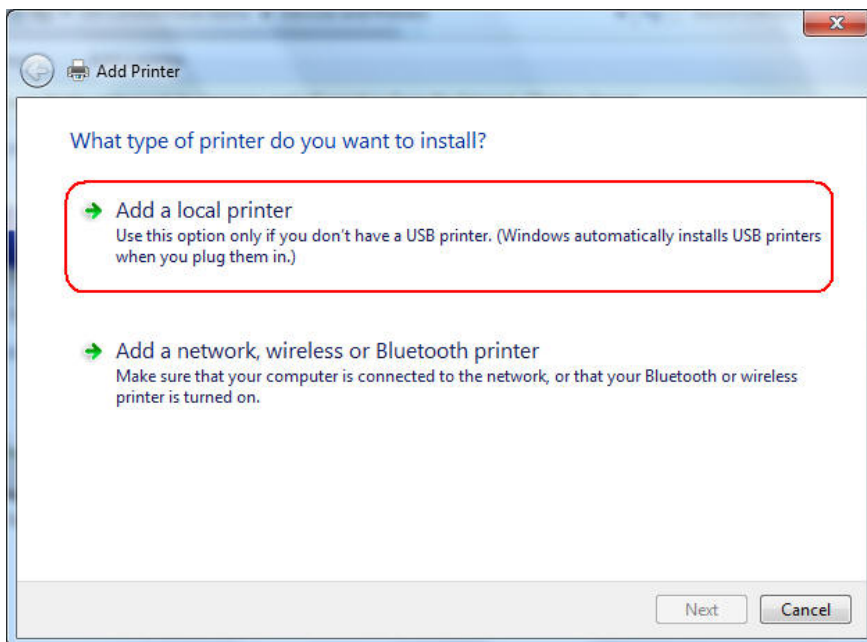


Figure 3-55

4. Select **“Create a new port”**, and the type of port is **“Standard TCP/IP Port”**.

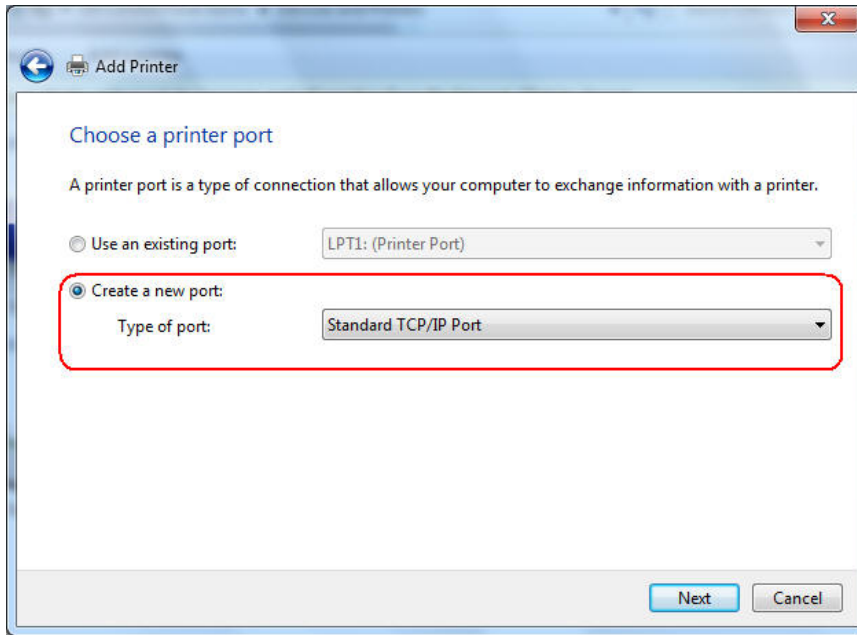


Figure 3-56

5. Input the **IP address** of the print server and click **Next**. The windows will detect the TCP/IP Port. Please wait for the next page.

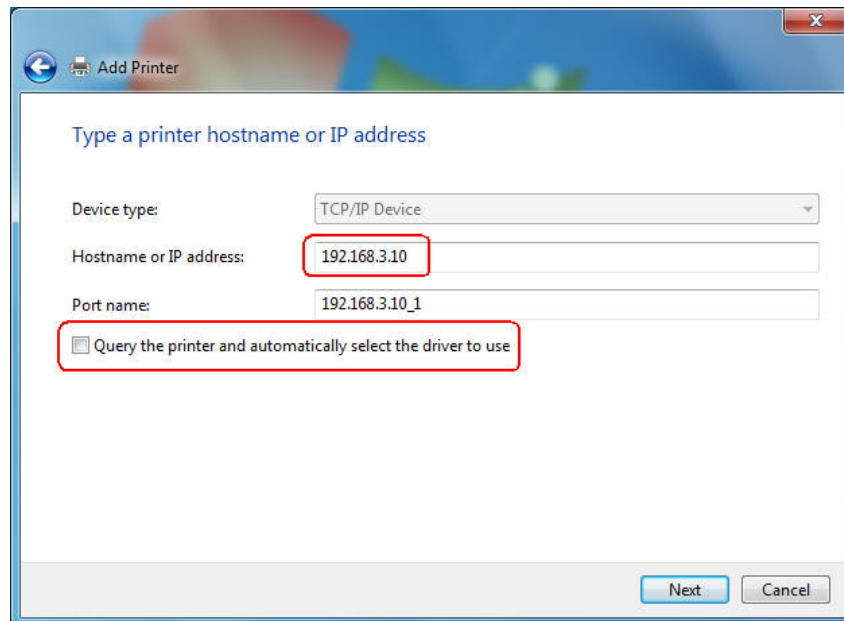


Figure 3-57

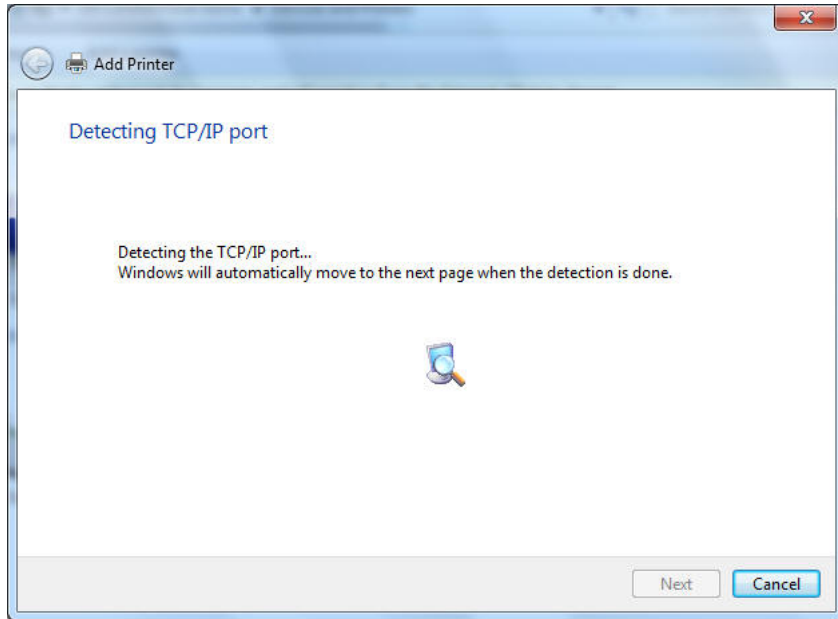


Figure 3-58

- On the following page, select **Custom** and click **Settings**. And then on the next page, please select **LPR** as the Protocol and the Queue Name is **lp1**.

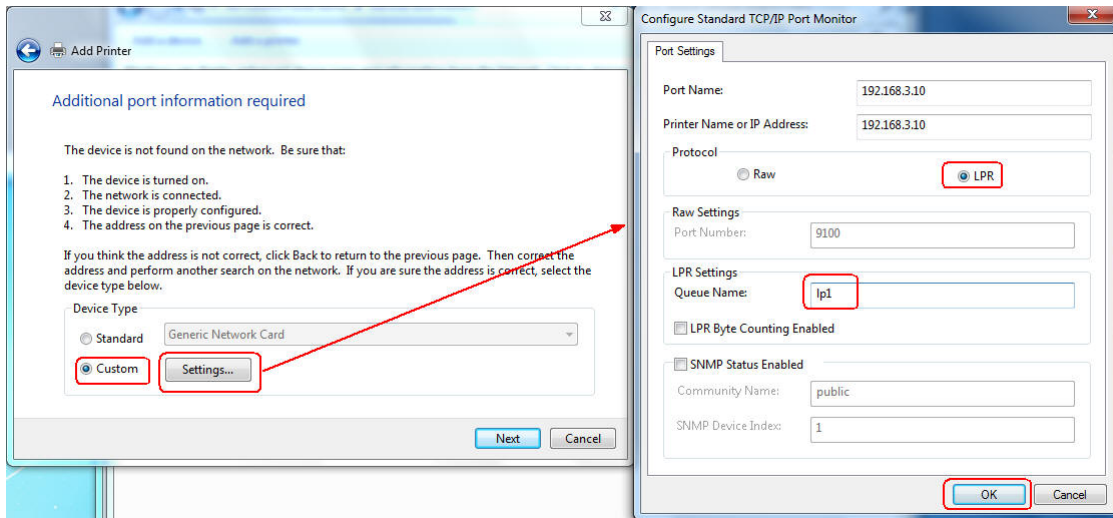


Figure 3-59

- The windows will ask you to install the driver of the printer. You can select one in the list or click **Have Disk** to install other drivers. Please follow the steps to finish the installation.

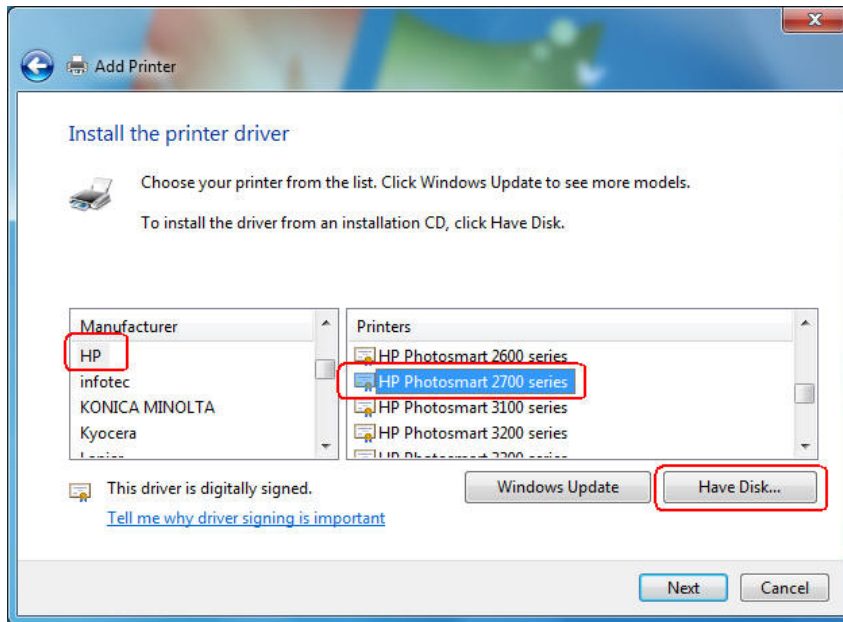


Figure 3-60

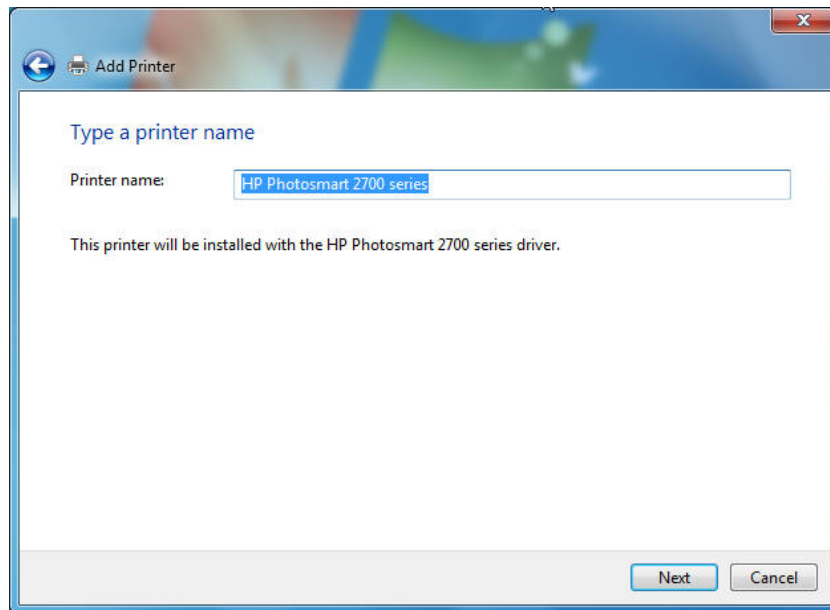


Figure 3-61

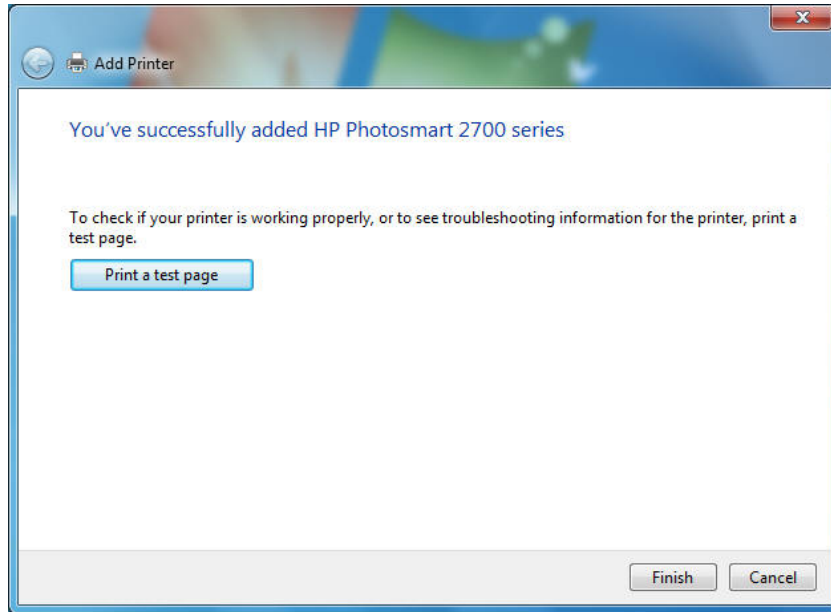


Figure 3-62

8. After that, the new printer is in the list. And you can enjoy the sharing.

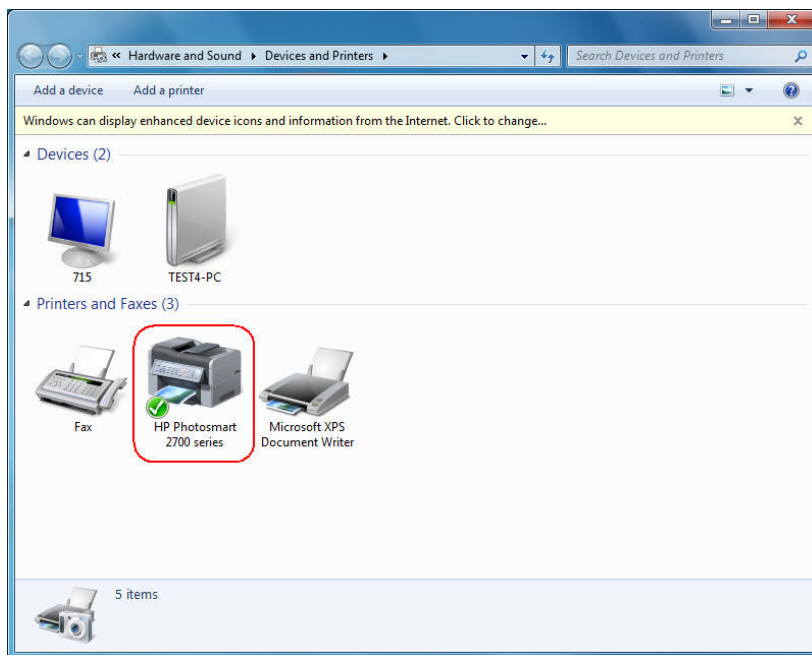


Figure 3-63

Chapter 4. More Configuration for the Print Server

The Print Server contains an embedded web server that can be accessed through a supported web browser on a WLAN, for example, IE6, Firefox or above is recommended. The embedded web server provides access to configuration and management pages for the print server and the connected peripheral device.

To use the embedded web server, you should first connect your adapter to the print server.

4.1 Login

Open a web-browser and type in the IP address of the print server (the default is 192.168.0.10) in the address field of the browser to login to the web management of the print server.



Figure 4-1

After a moment, a login window will appear, similar to the Figure 4-2. Enter **admin** in lower case letters for the User Name. Then click the **OK** button or press the **Enter** key.



Figure 4-2

Then the print server web management page will appear, with which you can configure all print server settings.

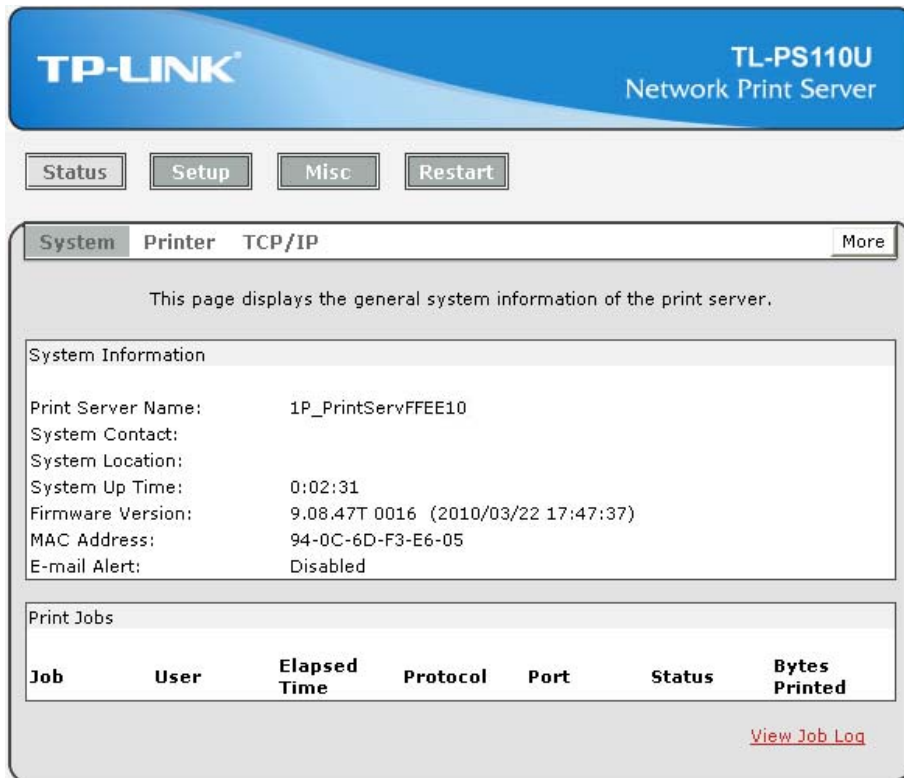


Figure 4-3

4.2 Status

The Status page shows the current information about the print server as shown in Figure 4-3. By clicking the corresponding tab, you can view the following information, including **System**, **Printer**, and **TCP/IP**.

4.2.1 System

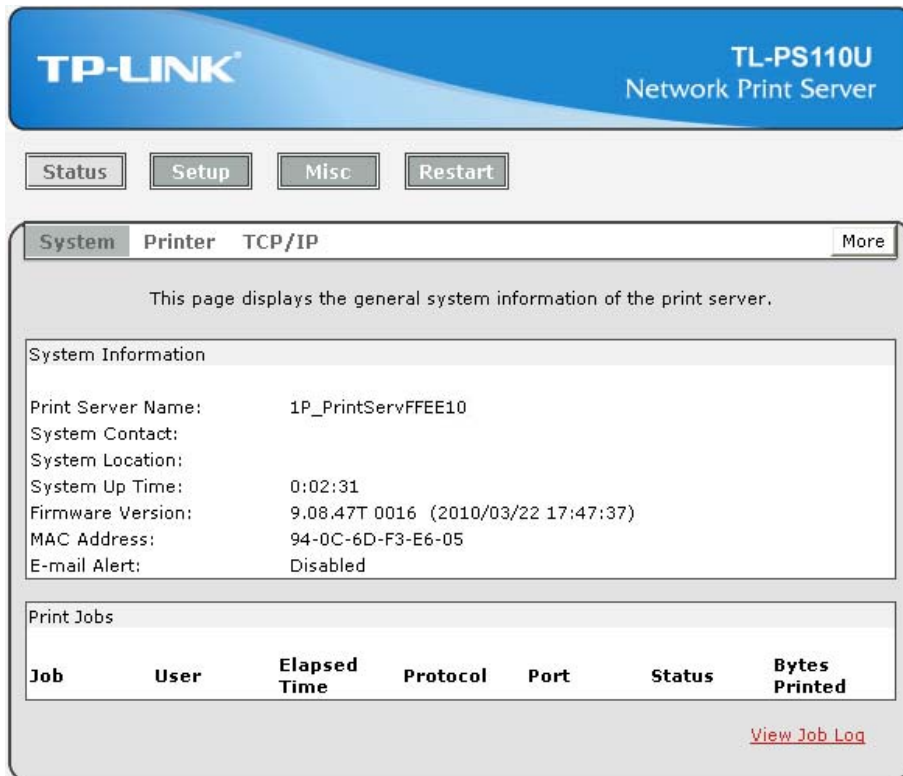


Figure 4-4

- **Print Server Name:** This option allows you to view device name of the print server. To correct the print server's device name.
- **System Contact:** This option allows you to view contact name of the print server.
- **System Location:** This option allows you to view Location name of the print server and to confirm the print server's location name where the print server is located in the office's LAN.
- **System Up Time:** This option allows you to view uptime of the print server. When you start the print server, it will compute the print server from start time to power off time.
- **Firmware Version:** This option allows you to view firmware version of the print server. To verify the print server's firmware version is newer in this time.
- **MAC Address:** This option allows you to view Node ID of the print server. The Node ID is unique from any print server.
- **Email Alert:** This option allows you to view the status of Email Alert feature.
- **Print Jobs:** This option allows you to view all the print jobs sent by any network user.

4.2.2 Printer

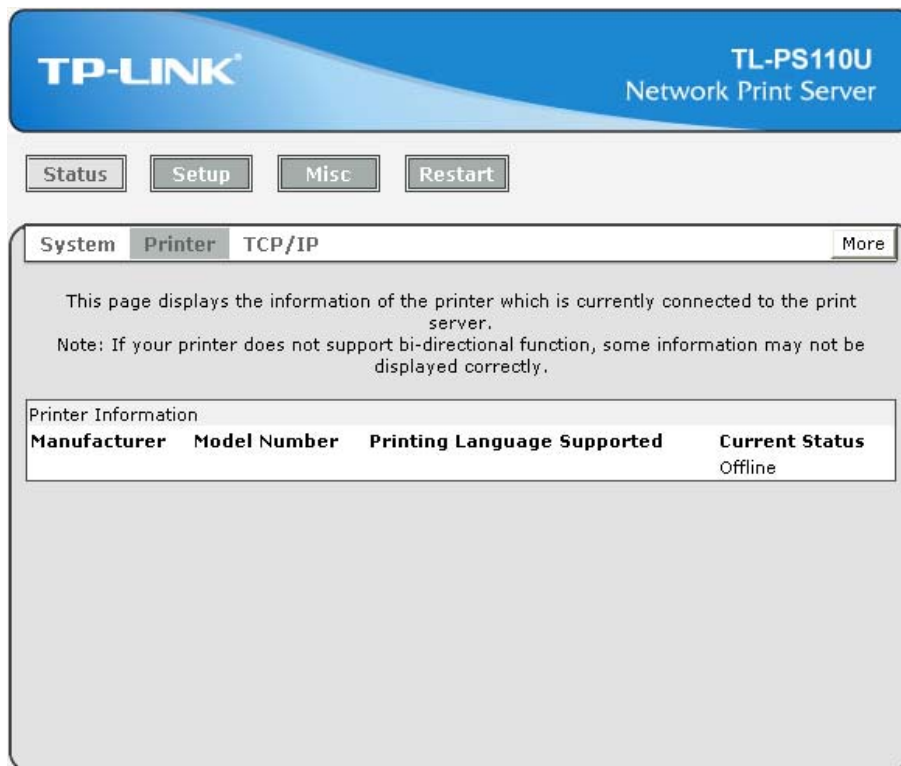


Figure 4-5

- **Manufacturer:** This option allows you to view manufacturer of the printer. When the printer connected with the print server, it will be show in the manufacture box.
- **Model Number:** This option allows you to view model of the printer. When the printer connected with the print server, it will be show in the model box.
- **Printing Language Supported:** This option allows you to view command to set the printer. When the printer connected with the print server, it will be show in the command box.
- **Current Status:** This option allows you to view status of the printer. When the printer connected with the print server, it will be show in the status box. For Example: Waiting for job. It is means the printer already to printing.

4.2.3 TCP/IP

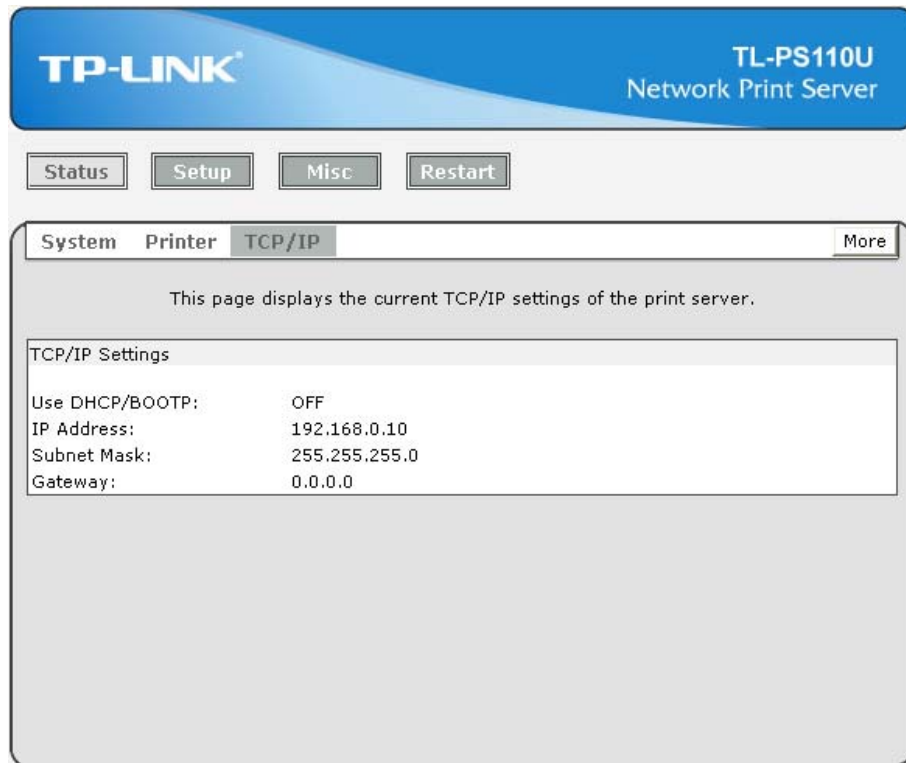


Figure 4-6

- **Use DHCP/BOOTP:** This option allows you to view DHCP/ BOOTP status. If there is a DHCP/BOOTP server on your network, this option allows the print server to obtain IP-related settings automatically from your DHCP server.
- **IP Address:** This option allows you to view IP address from the print server. The IP address must meet the IP addressing requirements of the network segment. (default: 192.168.0.10)
- **Subnet Mask:** This option allows you to view subnet mask from the print server.
- **Gateway:** This option allows you to view gateway from the print server.

4.3 Setup

The Setup page allows you to configure general system settings of the print server. By clicking the corresponding tab, you can configure the following items, including **System**, **Wireless**, and **TCP/IP**.

4.3.1 System

Click **System**, the following screen will appear.



Figure 4-7

- **E-mail Alert:** This option allows you to receive alert of the device.
- **SMTP Server IP Address:** Enter the IP Address of the SMTP Server.
- **Administrator E-mail Address:** Enter the e-mail address used to receive alert.
- **Print Server Name:** This option allows you to input device name of the print server. To correct the print server's device name.
- **Password:** This option allows you to change password of the print server. TL-PS110U is produced with no password. (default user name is **admin**, it's not available to change)

4.3.2 TCP/IP

Click **TCP/IP**, the following screen will appear.

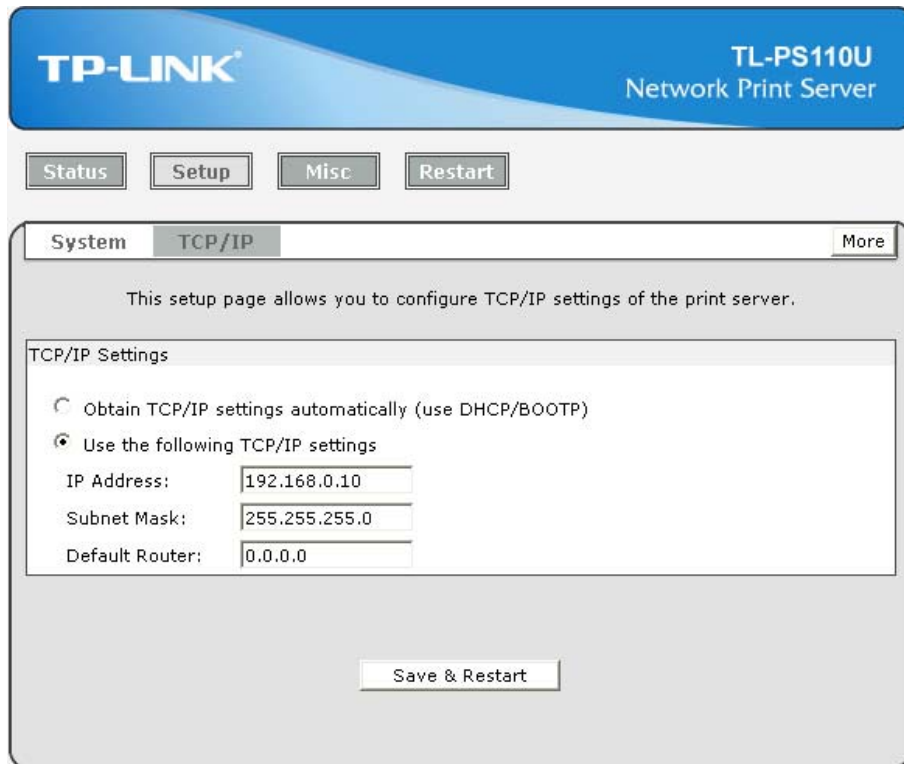


Figure 4-8

- **Use DHCP/BOOTP:** This option allows you to select DHCP/ BOOTP option. If there is a DHCP/BOOTP server on your network. This option allows the print server to obtain IP-related settings automatically from your DHCP server.
- **IP Address:** This option allows you to input IP address from the print server. The IP address must meet the IP addressing requirements of the network segment.

Note:

On the TCP/IP Setup screen, specify a fixed IP address is highly recommended.

- **Subnet Mask:** This option allows you to input subnet mask from the print server. The IP address must meet the IP addressing requirements of the network segment.
- **Default Router:** This option allows you to input gateway from the print server. This IP address of gateway must meet the router or gateway to go across of the network segment.

4.4 Misc

4.4.1 Factory Default

Click **OK** to restore the print server to its Factory Default settings.

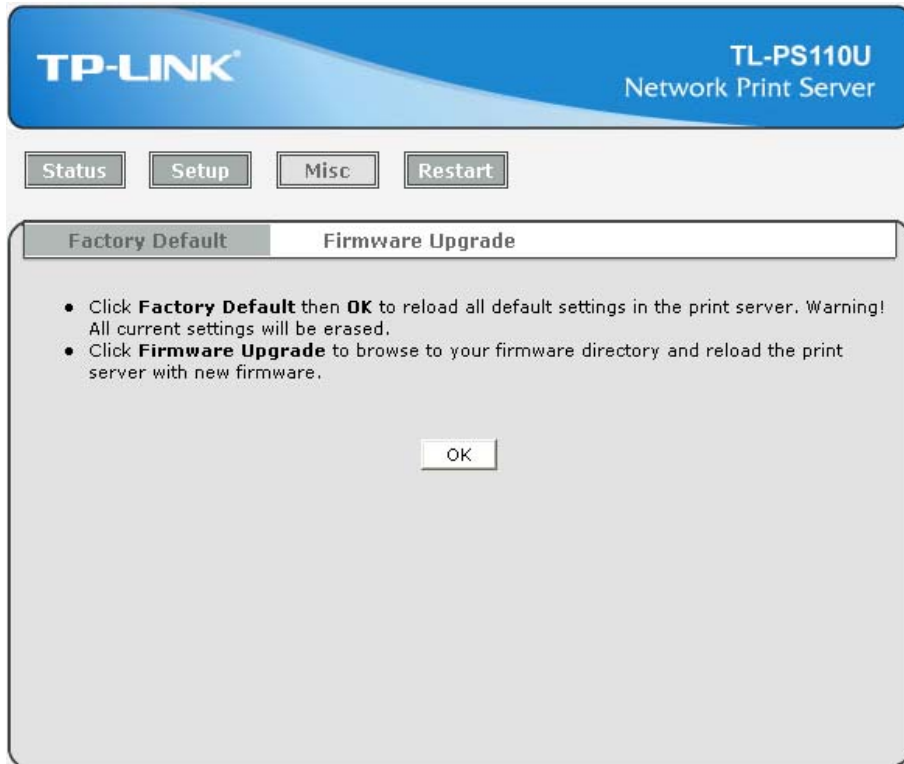


Figure 4-9

4.4.2 Firmware Upgrade

Click **Browse...** to select the firmware file and then click **Firmware Upgrade** to upgrade the firmware of the print server.

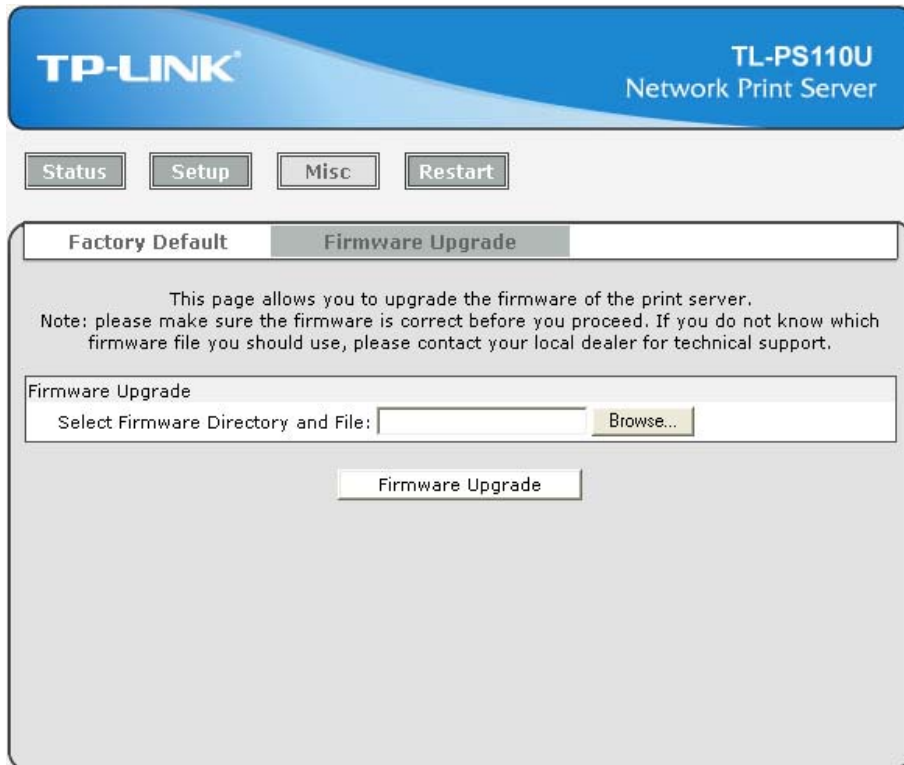


Figure 4-10

4.5 Restart

Click **OK** to reboot the print server.

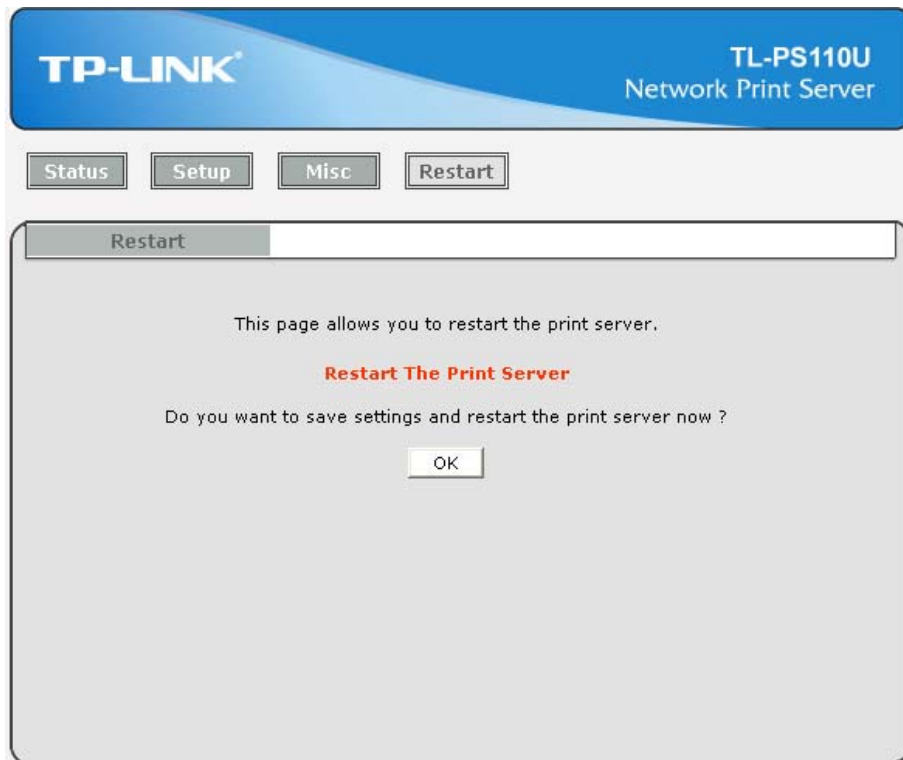


Figure 4-11

Appendix A: How to Reset the Print Server

If you lose the connection with the TL-PS110U by doing wrong configuration, you need to reset it to factory and reconfigure it again.

Here are the steps for the resetting

1. Unplug the power adapter of the TL-PS110U;
2. Press and hold the **Reset** button on the TL-PS110U;
3. Plug in the power adapter of the print server with the **Reset** button pressed for about 10 seconds.
4. Release the **Reset** button.
5. The print server will restart.

Appendix B: Troubleshooting

General Troubleshooting Overview

The most common problems, which cause the print server to perform improperly, are covered in this chapter. If a problem still exists after reading this chapter, please contact your dealer for technical support.

1) LED Light Indicators

The print server is equipped with LED lights to assist in diagnosing problems that are the result of the network and/or the print server hardware itself.

Status (Orange)

When the print server unit is powered on, the **Status** LED will flash five times as part of the unit's **Power On Self Test (POST)**. This indicates that the print server hardware is properly configured.

Note:

Make sure that the LED flashes five times (POST) upon connecting the power. If the unit does not flash five times, contact your dealer for a replacement or repair.

LAN (Green: 100Mbps; Orange: 10Mbps)

USB (Green: USB2.0; Orange: USB1.1)

Print server is being connected with USB printer.

2) Power Related Problems

The print server requires an external AC power adapter in order for it to function. If you have a power problem, check to see whether the power cord or its connectors are damaged. More importantly, check to see that the AC power adapter included with the print server matches the AC voltage in your country or area. Using an incorrect AC adapter will damage your print server.

3) Print Port Related Problems

Printing data failure may be caused by a loose connection of the print server to the USB port of the printer. Check to see if any of the pins on the USB connector are damaged. In addition, check the cable connection. If the pins are damaged, contact your dealer for a replacement connector.

4) TCP/IP Troubleshooting

When you are configuring a new print server on your NT/UNIX server through LPR Port printing under TCP/IP protocol, you might encounter the following problem in your initial installation steps:

" I can do the "arp" command. However, when I am going to ping or tftp the print server, it always shows Request timed out. I have checked the print server's power and it exactly passed the POST. Besides, the network cabling is OK. As such, I can't do tftp command to get and put the

print server's configuration file and save its IP address permanently. I can't, therefore, continue installing the print server."

Regarding this problem, there are three possible causes:

A. The print server's Node ID you specified in the "arp" command is not correct.

If this is the case, please ensure the Node ID field in the corresponding entry of the print server's IP address in NT's ARP cache table is correct by typing the following command at NT's DOS prompt. "arp -a"

If the Node ID shown on the screen doesn't match the print server's Node ID, please follow the instructions below to reset the entry.

1. At NT's DOS prompt, type "arp -d <print server's IP address>" to delete the current entry.
2. Type "arp -s <print server's IP> <print server's Node ID>" to specify a new ARP entry.
3. Refer to Chapter 7 for the detailed instructions to complete the installation.

B. The print server's IP address is duplicated or is as same as another computer's IP address on the network.

If this is the case, please consult your network administrator to obtain an unused IP address for your print server.

C. The print server is on one segment and your Windows NT server is on the other segment.

(This troubleshooting guide will also apply to a multiple-segmented network while installing the print server)

For example, assuming the print server is on Segment A, NT server is on Segment B, and there is a gateway computer between Segment A and Segment B. The network might be a complete TCP/IP network, or a hybrid of TCP/IP and IPX/SPX network.

If this is the case, you have to adopt the following steps, depending on which platform the gateway computer is.

- a. If the gateway computer is a NT/UNIX server:

You have to do the same "arp" command to specify an entry on the NT/UNIX computer as a gateway in order for it to forward your subsequent "ping" or/and "tftp" commands to the print server.

- b. If the gateway computer is a Novell NetWare file server:

1. Due to the presence of this NetWare file server, the IPX/SPX protocol might be used on your network. Therefore, we strongly suggest you run the **PSAdmin** from any client computer and select "**Manual Setup**" to specify the print server's IP address (For more detailed information about Manual Setup, please refer to Chapter 3).

2. If the solution described above is not applicable, you have to follow the instructions below to set up the print server's IP address.

For the purpose of explanation, we assume the NT server is on Segment A and its IP address is 192.72.214.66 (subnet mask: 255.255.255.224), the print server is going to be installed on Segment B, with IP address, for example, 192.72.214.100.

1. Find an unused IP address on Segment A for temporary use in the following steps, for example, 192.72.214.68.
2. Connect your print server to Segment A as a networked node.
3. On your NT server, type, for example, "arp -s 192.72.214.68 00-40-01-3F-02-AB". Please note, in this arp command you have to type 192.72.214.68 on purpose. Do not type this IP address as 192.72.214.100.
4. Type "tftp 192.72.214.68 get config.txt". The configuration file will then be retrieved and transferred to your NT server.
5. Type "edit config.txt" to modify this configuration file.
6. In your editor, modify "**BoxIPAddress**" field from "0.0.0.0" to "192.72.214.100". **Leave other options as default and do not change their values.** When done, save this new file and quit from your editor. **Please note, in this step you must specify an IP address which is valid on Segment B, such as 192.72.214.100 in this example, rather than 192.72.214.68.**
7. Type, for example, "tftp 192.72.214.68 put config.txt" to save this new configuration back to print server.
8. Move the print server back to the Segment B.
Done!

Appendix C: Frequently Asked Questions

1) Question A:

Print jobs are sent to the print queue successfully, but fail to be sent to the printer.

Possible explanations:

1. The Print server Name/Print Queue configuration is incorrect.
2. The Print server name specified and stored in the print server memory doesn't match the same one.
3. The power adapter connected to the print server is loose or disconnected.
4. The printer is off-line, jammed or out of paper.

Solutions:

1. Check all the information in print port setting.
2. Check all the information of the print server by running PSAdmin.
3. Check to see that if the power adapters are properly connected.
4. Recheck the print server connection by running the PSAdmin.

2) Question B

Print jobs start printing, but print very slowly or print unknown characters.

Possible explanation and solution:

A printer driver is missing or is incompatible with that printer. Using a print driver that is not specific for the printer can cause printing errors. Install the proper printer driver. If these printer drivers are not available to you, please contact your printer manufacturer.

3) Question C

The upgrading process indication bar stops and does not seem to proceed again while upgrading the print server.

Possible Explanation:

There might be a network problem. This causes the upgrading procedure to fail.

Solutions:

- 1) Check the wireless network connection, especially from the workstation running the PSAdmin to the print server unit.
- 2) Upgrade the print server again by PSAdmin or WEB browser.

4) Question D

The setup Wizard can't find print server.

Possible Explanation:

The Personal Firewall installed in your computer blocks the connection.

Solution:

Please disable the Personal Firewall temporarily or adjust the security level to lower.

Appendix D: Additional Installation Instructions

Panasonic KX-P6100/6300/6500

If you are using a Panasonic KX-P6100/6300/6500 laser printer with the print server through the **Network Print Port** under Windows 95/98, please redirect the printer named “**Panasonic KX-P6100 PCL**” or “**Panasonic KX-P6300 PCL**”, or “**Panasonic KX-P6500 PCL**” to the print server through the **Network Print Port**.

DO NOT redirect the printer named “Panasonic KX-P6100 GDI”, “Panasonic KX-P6300 GDI”, or “Panasonic KX-P6500 GDI” to the print server.

Please note that the print server doesn't support printing with host-based printers, e.g. CAPT, GDI, and PPA printers. Furthermore, the print server doesn't support any non-printing functions of MFP (Multiple Function Printer).

In case of static electricity or noise of power cable issue causes print server to disconnect, please re-plug the USB cable or re-start power to connect again.

Printer Compatibilities List for TL-PS110U/TL-PS110P/TL-WPS510U

Update:2012-08-08

Note: "OK" means the print server is compatible with the printer;

" \ " means the print server is not compatible with the printer;

"—" means the function is not tested;

PCL and PS are supported by our print servers. If the printer is not on the list, please check the printing language by yourself. If it is PCL or PS, it should be compatible with our print server. If not, it is more probably incompatible.

The product only supports the **printing function** of the Multi Function Printer.

No.	Manufacture	Model	TL-PS110U	TL-PS110P	TL-WPS510U
1	HP	Business InkJet 1000	OK		OK
2	HP	Color LaserJet 1500L	OK		—
3	HP	Color LaserJet 1600	OK		OK
4	HP	Color LaserJet 2500	OK	OK	OK
5	HP	Color LaserJet 2550	OK	OK	OK
6	HP	Color LaserJet 2550L/LN	OK		OK
7	HP	Color LaserJet 2600	OK		OK
8	HP	Color LaserJet 2605	OK	OK	OK
9	HP	Color LaserJet 2700n	OK		OK
10	HP	Color LaserJet 2840	OK		OK
11	HP	Color LaserJet 3700	OK	OK	OK
12	HP	Color LaserJet 4000		OK	
13	HP	Color LaserJet 4100		OK	
14	HP	Color LaserJet 4500		OK	
15	HP	Color LaserJet 4650	OK	OK	OK
16	HP	Color LaserJet 8550 Color		OK	
17	HP	Color LaserJet CP1215	OK		OK
18	HP	Color LaserJet CP1525nw	OK		OK
19	HP	Color LaserJet CM1312 MFP	OK		OK
20	HP	Color LaserJet CM1015 MFP	OK		OK
21	HP	DesignJet 100	OK	OK	OK
22	HP	DesignJet 450	—	OK	—
23	HP	DesignJet 600		OK	
24	HP	DesignJet 650C		OK	
25	HP	DesignJet 700		OK	
26	HP	DesignJet 750C+		OK	
27	HP	DeskJet 1120C		OK	
28	HP	Deskjet 1125C	OK	OK	OK
29	HP	Deskjet 1180C	OK	OK	OK
30	HP	DeskJet 1280	OK	OK	OK
31	HP	Deskjet 2000 J210	OK		OK
32	HP	Deskjet 2050	OK		OK
33	HP	Deskjet 3000	OK		OK
34	HP	Deskjet 3050	OK		OK
35	HP	Deskjet 3325	OK		OK
36	HP	DeskJet 3420	OK		OK
37	HP	Deskjet 3520	OK		OK
38	HP	Deskjet 3535	OK		OK
39	HP	Deskjet 3650	OK		OK
40	HP	Deskjet 3743	OK		OK
41	HP	Deskjet 3748	OK		OK
42	HP	Deskjet 3820	OK	OK	OK
43	HP	DeskJet 3920	OK		OK
44	HP	DeskJet 3940	OK		OK
45	HP	DeskJet 400/420		OK	
46	HP	Deskjet 450C	OK	OK	OK
47	HP	Deskjet 5150	OK	—	—
48	HP	DeskJet 5440	OK		OK
49	HP	DeskJet 5500		OK	
50	HP	Deskjet 5550	OK	OK	OK
No.	Manufacture	Model	TL-PS110U	TL-PS110P	TL-WPS510U

51	HP	Deskjet 5652	OK	OK	OK
52	HP	Deskjet 670C		OK	
53	HP	Deskjet 680C		OK	
54	HP	Deskjet 720C		OK	
55	HP	Deskjet 810C	OK	OK	OK
56	HP	Deskjet 830C	OK	OK	OK
57	HP	Deskjet 845C	OK		OK
58	HP	DeskJet 9300	OK	OK	OK
59	HP	Deskjet 948c	OK	OK	OK
60	HP	Deskjet 9600	OK	OK	OK
61	HP	Deskjet 9650	OK	OK	OK
62	HP	Deskjet 970c XI	OK	OK	OK
63	HP	Deskjet 9800	OK	OK	OK
64	HP	Deskjet D1560	OK		OK
65	HP	Deskjet D2560	OK		OK
66	HP	Deskjet D5560	OK		OK
67	HP	DeskJet F370	OK		OK
68	HP	DeskJet F380	OK		OK
69	HP	DeskJet F4185	OK		OK
70	HP	DeskJet F4280	OK		OK
71	HP	Deskjet F4480	OK		OK
72	HP	LaserJet Pro CP1525N	—	—	OK
73	HP	LaserJet 1100		OK	
74	HP	LaserJet 1010	OK	—	—
75	HP	LaserJet 1160	OK	OK	OK
76	HP	LaserJet 1200	OK	OK	OK
77	HP	LaserJet 1220	OK	OK	OK
78	HP	LaserJet 1300	OK	OK	OK
79	HP	LaserJet 1320	OK	OK	OK
80	HP	LaserJet M1522n MFP	OK		OK
81	HP	LaserJet 2055d	OK	—	—
82	HP	LaserJet 2100		OK	
83	HP	LaserJet 2200d	OK	OK	OK
84	HP	LaserJet 2300	OK	OK	OK
85	HP	LaserJet 2410	OK	OK	OK
86	HP	LaserJet 2420	OK	OK	OK
87	HP	LaserJet 2550	OK	OK	OK
88	HP	LaserJet 3015	OK	OK	OK
89	HP	LaserJet 3050	OK		OK
90	HP	LaserJet 3055	OK		OK
91	HP	LaserJet 3200	OK	OK	OK
92	HP	LaserJet 3330	OK	OK	OK
93	HP	LaserJet 3330mfp	OK	OK	OK
94	HP	LaserJet 3380	OK		OK
95	HP	LaserJet 4000		OK	
96	HP	LaserJet 4050		OK	
97	HP	LaserJet 4100 /4100n		OK	
98	HP	LaserJet 4250	OK	OK	OK
99	HP	LaserJet 4300n		OK	
100	HP	LaserJet 4300tn/dtn		OK	
No.	Manufacture	Model	TL-PS110U	TL-PS110P	TL-WPS510U
101	HP	LaserJet 4500		OK	
102	HP	LaserJet 4650	OK	OK	OK
103	HP	LaserJet 5100fn/tn		OK	
104	HP	LaserJet 5100le/se		OK	
105	HP	LaserJet 6P / 6L		OK	
106	HP	LaserJet 8100		OK	
107	HP	LaserJet M1120 MFP	OK		OK
108	HP	LaserJet M1319F MFP	OK		OK
109	HP	LaserJet P1102	OK	—	OK
110	HP	LaserJet P2015	OK		OK
111	HP	LaserJet Professional P1566	OK		—

112	HP	OfficeJet J3608	OK		OK
113	HP	OfficeJet 4255	OK		OK
114	HP	OfficeJet 4255	OK		OK
115	HP	OfficeJet 4500	OK		OK
116	HP	OfficeJet 4610	OK		OK
117	HP	OfficeJet 4620	OK		OK
118	HP	OfficeJet 5610	OK		OK
119	HP	OfficeJet J5780	OK		OK
120	HP	OfficeJet 6210	OK		OK
121	HP	OfficeJet 6310	OK		OK
122	HP	OfficeJet 6000	OK		OK
123	HP	OfficeJet 6100 ePrint	OK		OK
124	HP	OfficeJet 6500	OK		OK
125	HP	OfficeJet 6600	OK		OK
126	HP	OfficeJet 7000	—		OK
127	HP	OfficeJet 7500A	OK		OK
128	HP	OfficeJet 7210	OK		OK
129	HP	OfficeJet J4580	OK		OK
130	HP	OfficeJet J4660	OK		OK
131	HP	OfficeJet J6480	OK		OK
132	HP	OfficeJet K7100	OK		OK
133	HP	OfficeJet K850	OK	OK	OK
134	HP	OfficeJet Pro K5300	OK		OK
135	HP	OfficeJet Pro K550	OK		OK
136	HP	OfficeJet Pro 8100	OK		OK
137	HP	OfficeJet Pro K8600	OK		OK
138	HP	OfficeJet Pro 8600	OK		OK
139	HP	OfficeJet Pro 8600 Plus	OK		OK
140	HP	OfficeJet Pro L7380	OK		OK
141	HP	OfficeJet Pro L7590	OK		OK
142	HP	OfficeJet Pro 6500A Plus	OK		OK
143	HP	OfficeJet Pro 7000	OK		OK
144	HP	OfficeJet Pro 8000	OK		OK
145	HP	OfficeJet Pro 8500A Plus	OK		OK
146	HP	OfficeJet Pro 8500W	OK		OK
147	HP	Photosmart 2610	OK		OK
148	HP	Photosmart 3110	OK		OK
149	HP	Photosmart 5510	OK		OK
150	HP	Photosmart 5520	OK		OK
No.	Manufacture	Model	TL-PS110U	TL-PS110P	TL-WPS510U
151	HP	Photosmart 6510	OK		OK
152	HP	Photosmart 7150	OK		OK
153	HP	Photosmart 7200	OK		OK
154	HP	Photosmart 7510	OK		OK
155	HP	Photosmart 7550	OK		OK
156	HP	Photosmart 7660	OK		OK
157	HP	Photosmart 7830	OK		OK
158	HP	Photosmart 7900	OK		OK
159	HP	Photosmart 8200	OK		OK
160	HP	Photosmart Plus B209a	OK		OK
161	HP	Photosmart Plus B210a	OK		OK
162	HP	Photosmart Plus C310a	OK		OK
163	HP	Photosmart A520	OK		OK
164	HP	Photosmart B109a	OK		OK
165	HP	Photosmart B110a AIO	OK		OK
166	HP	Photosmart C309a	OK		OK
167	HP	Photosmart C410a	OK		OK
168	HP	Photosmart C3180	OK		OK
169	HP	Photosmart C4180	OK		OK
170	HP	Photosmart C4200	OK	—	—
171	HP	Photosmart C4280	OK		OK

172	HP	Photosmart C4385	OK		OK
173	HP	Photosmart C4480	OK		OK
174	HP	Photosmart C4580	OK		OK
175	HP	Photosmart C5180	OK		OK
176	HP	Photosmart C5280	OK		OK
177	HP	Photosmart C5380	OK		OK
178	HP	Photosmart C6180	OK		OK
179	HP	Photosmart C6280	OK		OK
180	HP	Photosmart C6380	OK		OK
181	HP	Photosmart C7180	OK		OK
182	HP	Photosmart C7280	OK		OK
183	HP	Photosmart C8180	OK		OK
184	HP	Photosmart D5160	OK		OK
185	HP	Photosmart D5360	OK		OK
186	HP	Photosmart D5460	OK		OK
187	HP	Photosmart D7160	OK		OK
188	HP	Photosmart D7260	OK		OK
189	HP	Photosmart D7360	OK		OK
190	HP	Photosmart Premium C309g	OK		OK
191	HP	Photosmart Premium C310g	OK		OK
192	HP	PSC 1210			OK
193	HP	PSC 1315	OK		OK
194	HP	PSC 1350	OK		OK
195	HP	PSC 1410	OK		OK
196	HP	PSC 1610	OK		OK
197	HP	PSC 2210	OK		OK
198	HP	PSC 2310	OK		OK
199	EPSON	Aculaser C1100SE	OK	OK	OK
200	EPSON	Aculaser C1100N	OK	—	—
No.	Manufacture	Model	TL-PS110U	TL-PS110P	TL-WPS510U
201	EPSON	Aculaser C1700	OK		OK
202	EPSON	Aculaser C1750N	OK		OK
203	EPSON	Aculaser C1750W	OK		OK
204	EPSON	Aculaser C1900	OK	OK	OK
205	EPSON	Aculaser C2900	OK		OK
206	EPSON	Aculaser C3800	OK		OK
207	EPSON	Aculaser C3900N	OK		OK
208	EPSON	Aculaser C9100	OK		OK
209	EPSON	Aculaser CX16NF	OK		OK
210	EPSON	Aculaser CX17NF	OK		OK
211	EPSON	Aculaser M1400	OK		OK
212	EPSON	Aculaser M2010DN	OK		OK
213	EPSON	Aculaser M2010D	OK	OK	OK
214	EPSON	Aculaser M2310D	OK	OK	OK
215	EPSON	Aculaser M2310DN	OK		OK
216	EPSON	Aculaser M2410D	OK	OK	OK
217	EPSON	Aculaser M2410DN	OK		OK
218	EPSON	Aculaser MX14	OK		OK
219	EPSON	Aculaser MX14NF	OK		OK
220	EPSON	AL-M7000	OK		OK
221	EPSON	B-508DN	OK		OK
222	EPSON	C750	OK	OK	OK
223	EPSON	CC-500L	OK		OK
224	EPSON	CL-760	OK		OK
225	EPSON	E-300L	OK		OK
226	EPSON	E-520	OK		OK
227	EPSON	E-720	OK		OK
228	EPSON	EC-01	OK		OK
229	EPSON	EPL 5700		OK	
230	EPSON	EPL 5700		OK	
231	EPSON	EPL 5800	OK	OK	OK
232	EPSON	EPL 5800	OK	OK	OK

233	EPSON	EPL 5900	OK	OK	OK
234	EPSON	EPL 5900	OK	OK	OK
235	EPSON	EPL 6100	OK	OK	OK
236	EPSON	EPL 6200	OK	OK	OK
237	EPSON	Aculaser C1600	OK		OK
238	EPSON	B-518DN	OK		OK
239	EPSON	EPL 6200	OK	OK	OK
240	EPSON	EPL N2120		OK	
241	EPSON	K100	OK		OK
242	EPSON	L200	OK		OK
243	EPSON	L300	OK		OK
244	EPSON	L800	OK		OK
245	EPSON	LP2500	OK		OK
246	EPSON	LP-7700	OK		OK
247	EPSON	LP-8700	OK		OK
248	EPSON	LP-8800C	OK		OK
249	EPSON	LP8900	OK		OK
250	EPSON	LP-9500C	OK		OK
No.	Manufacture	Model	TL-PS110U	TL-PS110P	TL-WPS510U
251	EPSON	LQ 100		OK	
252	EPSON	LQ 1000C		OK	
253	EPSON	LQ 1170+		OK	
254	EPSON	LQ 1170C		OK	
255	EPSON	LQ 1170C+		OK	
256	EPSON	LQ 2070C		OK	
257	EPSON	LQ 2080C		OK	
258	EPSON	LQ 2090		OK	
259	EPSON	LQ 2090C	OK	OK	OK
260	EPSON	LQ 2170C		OK	
261	EPSON	LQ 2180C		OK	
262	EPSON	LQ 2190C	OK	OK	OK
263	EPSON	LQ 2550		OK	
264	EPSON	LQ 300		OK	
265	EPSON	LQ 300+		OK	
266	EPSON	LQ 300+II	OK	OK	OK
267	EPSON	LQ 3500C		OK	
268	EPSON	LQ 570C		OK	
269	EPSON	LQ 670		OK	
270	EPSON	LQ 680		OK	
271	EPSON	LQ 680C		OK	
272	EPSON	ME 320	OK		OK
273	EPSON	ME 340	OK		OK
274	EPSON	ME Office 82WD	OK		OK
275	EPSON	ME Office 900WD	OK		OK
276	EPSON	ME Office 940FW	OK		OK
277	EPSON	ME Office 960FWD	OK		OK
278	EPSON	MC-2000	OK		OK
279	EPSON	PictureMate PM250	OK		OK
280	EPSON	PLQ-20C	OK		OK
281	EPSON	PLQ-20CM	OK		OK
282	EPSON	PM-860PT	OK		OK
283	EPSON	PM-890C	OK		OK
284	EPSON	PM-920C	OK		OK
285	EPSON	PM-930C	OK		OK
286	EPSON	PM-950C	OK		OK
287	EPSON	PM-970C	OK		OK
288	EPSON	PM-980C	OK		OK
289	EPSON	PM-A550	OK		OK
290	EPSON	PM-A620	OK		OK
291	EPSON	PM-A650	OK		OK
292	EPSON	PM-A720	OK		OK
293	EPSON	PM-A820	OK		OK
294	EPSON	PM-A840	OK		OK
295	EPSON	PM-A850	OK		OK

296	EPSON	PM-A890	OK		OK
297	EPSON	PM-A900	OK		OK
298	EPSON	PM-A920	OK		OK
299	EPSON	PM-A940	OK		OK
300	EPSON	PM-A950	OK		OK
No.	Manufacture	Model	TL-PS110U	TL-PS110P	TL-WPS510U
301	EPSON	PM-A970	OK		OK
302	EPSON	PM-2200C	OK		OK
303	EPSON	PM-3500C	OK		OK
304	EPSON	PM-3700C	OK		OK
305	EPSON	PM-4000PX	OK		OK
306	EPSON	PM-D800	OK		OK
307	EPSON	PM-D870	OK		OK
308	EPSON	PM-D1000	OK		OK
309	EPSON	PM-FA700	OK		OK
310	EPSON	PM-G800	OK		OK
311	EPSON	PM-G820	OK		OK
312	EPSON	PM-G850	OK		OK
313	EPSON	PM-G860	OK		OK
314	EPSON	PM-G4500	OK		OK
315	EPSON	PM-T960	OK		OK
316	EPSON	PM-T990	OK		OK
317	EPSON	PX-5000	OK		OK
318	EPSON	PX-A640	OK		OK
319	EPSON	PX-A740	OK		OK
320	EPSON	PX-G5300	OK		OK
321	EPSON	PX-G5100	OK		OK
322	EPSON	PX-G930	OK		OK
323	EPSON	PX-G5000	OK		OK
324	EPSON	PX-V780	OK		OK
325	EPSON	RX 510	OK		OK
326	EPSON	RX 530	OK		OK
327	EPSON	RX 590	OK		OK
328	EPSON	RX 630	OK		OK
329	EPSON	RX 690	OK		OK
330	EPSON	Stylus C20	OK		OK
331	EPSON	Stylus C40	OK		OK
332	EPSON	Stylus C41UX/SX	OK		OK
333	EPSON	Stylus C43UX	OK		OK
334	EPSON	Stylus C45	OK		OK
335	EPSON	Stylus C59	OK		OK
336	EPSON	Stylus C60	OK	OK	OK
337	EPSON	Stylus C63	OK	OK	OK
338	EPSON	Stylus C67	OK	OK	OK
339	EPSON	Stylus C79	OK	OK	OK
340	EPSON	Stylus C83		OK	
341	EPSON	Stylus C90	OK		OK
342	EPSON	Stylus Color 1160	OK		OK
343	EPSON	Stylus Color 1500	OK		OK
344	EPSON	Stylus Color 1520	OK		OK
345	EPSON	Stylus Color 400		OK	
346	EPSON	Stylus Color 600		OK	
347	EPSON	Stylus Color 670	OK	OK	OK
348	EPSON	Stylus Color 800	OK	OK	OK
349	EPSON	Stylus Color 810	OK	OK	OK
350	EPSON	Stylus Color 850	OK	OK	OK
No.	Manufacture	Model	TL-PS110U	TL-PS110P	TL-WPS510U
351	EPSON	Stylus Color 900	OK		OK
352	EPSON	Stylus CX-1500	OK		OK
353	EPSON	Stylus CX-2900	OK		OK
354	EPSON	Stylus CX-3500	OK		OK
355	EPSON	Stylus CX-3700	OK		OK
356	EPSON	Stylus CX-3900	OK		OK
357	EPSON	Stylus CX-4100	OK		OK

358	EPSON	Stylus CX-4700	OK		OK
359	EPSON	Stylus CX-4900	OK		OK
360	EPSON	Stylus CX-5300	OK		OK
361	EPSON	Stylus CX-5500	OK		OK
362	EPSON	Stylus CX-5505	OK		OK
363	EPSON	Stylus CX-5900	OK		OK
364	EPSON	Stylus CX-6900F	OK		OK
365	EPSON	Stylus CX-7300	OK		OK
366	EPSON	Stylus CX-7800	OK		OK
367	EPSON	Stylus CX-8300	OK		OK
368	EPSON	Stylus CX-9300F	OK		OK
369	EPSON	Stylus Office T30	OK		OK
370	EPSON	Stylus Office T40W	OK		OK
371	EPSON	Stylus Office TX300F	OK		OK
372	EPSON	Stylus Office TX320F	OK		OK
373	EPSON	Stylus Office TX510FN	OK		OK
374	EPSON	Stylus Office TX600FW	OK		OK
375	EPSON	Stylus Office TX610FW	OK		OK
376	EPSON	Stylus Office T1100	OK		OK
377	EPSON	Stylus Photo 915	OK		OK
378	EPSON	Stylus Photo 1270	OK	OK	OK
379	EPSON	Stylus Photo 1290	OK		OK
380	EPSON	Stylus Photo 1390	OK		OK
381	EPSON	Stylus Photo 2100	OK		OK
382	EPSON	Stylus Photo 710	OK		OK
383	EPSON	Stylus Photo 720	OK		OK
384	EPSON	Stylus Photo 790	OK		OK
385	EPSON	Stylus Photo 810	OK	OK	OK
386	EPSON	Stylus Photo 830U	OK		OK
387	EPSON	Stylus Photo 900	OK	OK	OK
388	EPSON	Stylus Photo 915	OK		OK
389	EPSON	Stylus Photo EX2	OK	OK	OK
390	EPSON	Stylus Photo EX3	OK	OK	OK
391	EPSON	Stylus Photo R1800	OK	OK	OK
392	EPSON	Stylus Photo R210	OK		OK
393	EPSON	Stylus Photo R230	OK		OK
394	EPSON	Stylus Photo R250	OK		OK
395	EPSON	Stylus Photo R270	OK		OK
396	EPSON	Stylus Photo R310	OK		OK
397	EPSON	Stylus Photo R350	OK		OK
398	EPSON	Stylus Photo R2400	OK		OK
399	EPSON	Stylus Photo R800	OK		OK
400	EPSON	Stylus Photo RX430	OK		OK
No.	Manufacture	Model	TL-PS110U	TL-PS110P	TL-WPS510U
401	EPSON	Stylus Photo RX 510	OK		OK
402	EPSON	Stylus Photo RX 530	OK		OK
403	EPSON	Stylus Photo RX 590	OK		OK
404	EPSON	Stylus Photo RX 630	OK		OK
405	EPSON	Stylus Photo RX 650	OK		OK
406	EPSON	Stylus Photo RX 690	OK		OK
407	EPSON	Stylus Photo R2880	OK		OK
408	EPSON	Stylus Photo TX700W	OK		OK
409	EPSON	Stylus Photo TX800FW	OK		OK
410	EPSON	Stylus Photo TX820FWD	OK		OK
411	EPSON	Stylus Pro 7600	OK	OK	OK
412	EPSON	Stylus TX550W	OK		OK
413	EPSON	Stylus TX420W	OK		OK
414	EPSON	Stylus TX410	OK		OK
415	EPSON	Stylus TX430	OK		OK
416	EPSON	Stylus TX235	OK		OK
417	EPSON	Stylus TX220	OK		OK
418	EPSON	Stylus TX200	OK		OK
419	EPSON	Stylus TX210	OK		OK
420	EPSON	Stylus TX130	OK		OK

421	EPSON	Stylus TX110	OK		OK
422	EPSON	Stylus TX100	OK		OK
423	EPSON	Stylus T22	OK		OK
424	EPSON	Stylus T20	OK		OK
425	EPSON	Stylus T21	OK		OK
426	EPSON	Stylus Photo T50	OK		OK
427	EPSON	TM883 (III)		OK	
428	EPSON	TM T88III		OK	
429	EPSON	WF-7011	OK		OK
430	EPSON	WP-4531	OK		OK
431	EPSON	WP-4091	OK		OK
432	EPSON	XP30	OK		OK
433	EPSON	XP-102	OK		OK
434	EPSON	XP-202	OK		OK
435	EPSON	XP-302	OK		OK
436	EPSON	XP-402	OK		OK
437	Canon	BJ-330		OK	
438	Canon	BJC-4200		OK	
439	Canon	BJC-4300		OK	
440	Canon	BJC-4500			
441	Canon	BJC-4550		OK	
442	Canon	BJC-4600		OK	
443	Canon	BJF9000	OK		OK
444	Canon	D380	OK		OK
445	Canon	I-255	OK		OK
446	Canon	I-355	OK		OK
447	Canon	I-450	OK		OK
448	Canon	I-455	OK		OK
449	Canon	I-470D	OK		OK
450	Canon	I-475D	OK		OK
No.	Manufacture	Model	TL-PS110U	TL-PS110P	TL-WPS510U
451	Canon	I-550	OK		OK
452	Canon	I-560	OK		OK
453	Canon	I-850	OK		OK
454	Canon	I-865	OK		OK
455	Canon	I-950	OK		OK
456	Canon	I-6100	OK	OK	OK
457	Canon	I-6500	OK	OK	OK
458	Canon	I-9100	OK		OK
459	Canon	I-9950	OK		OK
460	Canon	IR 1025IF	OK	—	—
461	Canon	IX4000	OK		OK
462	Canon	IX5000	OK		OK
463	Canon	Imageclass D380	OK		OK
464	Canon	MP-160	OK		OK
465	Canon	MP-638	OK		OK
466	Canon	MP 770	OK		OK
467	Canon	MP 800	OK	—	—
468	Canon	MX318	OK		OK
469	Canon	MX320	OK		OK
470	Canon	MX700	OK		OK
471	Canon	NP630	—	—	OK
472	Canon	PIXUS IP2500	OK		OK
473	Canon	PIXUS 990i	OK		OK
474	Canon	PIXMA iP1000	OK		OK
475	Canon	PIXMA iP1700	OK		OK
476	Canon	PIXMA iP1800	OK		OK
477	Canon	PIXMA Ip1880	OK		OK
478	Canon	PIXMA Ip1980	OK		OK
479	Canon	PIXMA Ip2000	OK		OK
480	Canon	PIXMA iP3000	OK		OK
481	Canon	PIXMA Ip3300	OK		OK
482	Canon	PIXMA Ip3500	OK		OK
483	Canon	PIXMA Ip3680	OK		OK

484	Canon	PIXMA iP4000	OK	OK	OK
485	Canon	PIXMA Ip4200	OK		OK
486	Canon	PIXMA Ip4300	OK		OK
487	Canon	PIXMA Ip4500	OK		OK
488	Canon	PIXMA Ip4600	—	—	OK
489	Canon	PIXMA Ip4760	OK		OK
490	Canon	PIXMA ip4970	OK		OK
491	Canon	PIXMA Ip5000	OK		OK
492	Canon	PIXMA Ip6000	OK		OK
493	Canon	PIXMA Ip8500	OK		OK
494	Canon	PIXMA MG6170	OK		OK
495	Canon	PIXMA MG6270	OK		OK
496	Canon	PIXMA MP110	OK		OK
497	Canon	PIXMA MP130	OK		OK
498	Canon	PIXMA MP145	OK		OK
499	Canon	PIXMA MP150	OK		OK
500	Canon	PIXMA MP180	OK		OK
No.	Manufacture	Model	TL-PS110U	TL-PS110P	TL-WPS510U
501	Canon	PIXMA MP258	OK		OK
502	Canon	PIXMA MP450	OK		OK
503	Canon	PIXMA MP730	OK		OK
504	Canon	PIXMA MP780	OK		OK
505	Canon	PIXMA MP830	OK		OK
506	Canon	PIXMA MX357	OK		OK
507	Canon	PIXMA MX416	OK		OK
508	Canon	S-200SPX	OK		OK
509	Canon	S-520		OK	
510	Lexmark	C720		OK	
511	Lexmark	E230	OK		OK
512	Lexmark	E322	OK	OK	OK
513	Lexmark	Optra S1250		OK	
514	Lexmark	P4350	OK		OK
515	Lexmark	P6250	OK		OK
516	Lexmark	T420	OK	OK	OK
517	Lexmark	T620	OK	OK	OK
518	Lexmark	W812	OK	OK	OK
519	Lexmark	Z42	OK		OK
520	Lexmark	Z43	OK	OK	OK
521	Lexmark	Z45	OK		OK
522	Lexmark	Z55	OK	OK	OK
523	Lexmark	Z515	OK	OK	OK
524	Lexmark	Z615	OK		OK
525	Lexmark	Z705	OK	OK	OK
526	FUJI Xerox	Able 3321		OK	
527	FUJI Xerox	DL700		OK	
528	FUJI Xerox	DL900		OK	
529	FUJI Xerox	DL-3400		OK	
530	FUJI Xerox	DL-3800		OK	
531	FUJI Xerox	DL-3850		OK	
532	FUJI Xerox	DL-5800		OK	
533	FUJI Xerox	DL-6400Pro		OK	
534	FUJI Xerox	DL-6800		OK	
535	FUJI Xerox	DocuPrint 2050	OK	OK	OK
536	FUJI Xerox	DocuPrint 240A	OK	OK	OK
537	FUJI Xerox	DocuPrint C1110B	OK		OK
538	FUJI Xerox	DocuPrint CM205 f	OK		OK
539	FUJI Xerox	DocuPrint CP105 b	OK		OK
540	FUJI Xerox	DocuPrint P205 b	OK		OK
541	FUJI Xerox	DocuPrint M205 b	OK		OK
542	FUJI Xerox	DocuPrint M205 f	OK		OK
543	FUJI Xerox	DocuPrint M205 fw	OK		OK
544	FUJI Xerox	FP 410	—	OK	
545	FUJI Xerox	Jet Wind 500C		OK	
546	FUJI Xerox	Phaser 3310	OK	OK	OK

547	FUJI Xerox	PP 10		OK	
548	Konica Minolta	Di 152		OK	
549	Konica Minolta	Di 200/Di 250/Di 251		OK	
550	Konica Minolta	magicolor 2450	OK	OK	OK
No.	Manufacture	Model	TL-PS110U	TL-PS110P	TL-WPS510U
551	Konica Minolta	magicolor 5450	OK	OK	OK
552	Konica Minolta	magicolor 7300	OK		OK
553	Konica Minolta	Magicolor 7300	OK		OK
554	Konica Minolta	PagePro 1350W	OK		OK
555	Konica Minolta	PagePro 9100	OK		OK
556	Samsung	CLP-315	OK	---	OK
557	Samsung	CLP-500	OK	OK	OK
558	Samsung	CLP-510	OK	OK	OK
559	Samsung	CLP-620ND	OK	---	OK
560	Samsung	CLX2160	OK	---	OK
561	Samsung	ML-1510/1710	OK	OK	OK
562	Samsung	ML-1520	OK	---	OK
563	Samsung	ML-1610	OK	---	---
564	Samsung	ML-1640	---	---	OK
565	Samsung	ML-1660	OK	---	OK
566	Samsung	ML-1710	OK	---	OK
567	Samsung	ML-1750	OK	OK	OK
568	Samsung	ML-1915	OK	---	OK
569	Samsung	ML-2010	OK	---	OK
570	Samsung	ML-2250	OK	OK	OK
571	Samsung	ML-2550	OK	OK	OK
572	Samsung	ML-2580N	OK	---	OK
573	Samsung	ML-3471ND	OK	OK	OK
574	Samsung	SCX-4016	OK	OK	OK
575	Samsung	SCX-4100/4106/4116/4216F	OK	OK	OK
576	Samsung	SCX-4300	---	---	OK
577	Samsung	SCX-4623	---	---	OK
578	Samsung	SCX-5315	---	---	OK
579	Samsung	SRP 270		OK	
580	Panasonic	KX-P1121		OK	
581	Panasonic	KX-P1123		OK	
582	Panasonic	KX-P1124		OK	
583	Panasonic	KX-P1624		OK	
584	Panasonic	KX-P6500		OK	
585	TOSHIBA	E-161	OK(Parallel only)	OK	OK
586	TOSHIBA	Estudio-25		OK	
587	NEC	NEC P2200		OK	
588	NEC	NEC P3200		OK	
589	NEC	NEC P5300		OK	
590	NEC	NEC P8000		OK	
591	IBM	IBM Inforprint 20		OK	
592	IBM	Infoprint 1116	OK	OK	OK
593	IBM	Infoprint 1312	OK	OK	OK
594	IBM	Infoprint 1316	OK	OK	OK
595	IBM	Infoprint 1332	OK	OK	OK
596	IBM	Infoprint 1412	OK	OK	OK
597	Star	NX-2420		OK	
598	Sharp	AR-255		OK(Parallel only)	
599	Sharp	AR-265FG		OK(Parallel only)	
600	Sharp	AR-M160(AR-NB2)		OK(Parallel only)	
No.	Manufacture	Model	TL-PS110U	TL-PS110P	TL-WPS510U
601	Sharp	AR-M205		OK(Parallel only)	
602	Sharp	AR-M207		OK(Parallel only)	
603	Sharp	AR-M209			
604	Sharp	AR-M235		OK(Parallel only)	
605	Sharp	AR-M236			
606	Sharp	AR-M275		OK(Parallel only)	
607	Sharp	AR-M276			

608	Sharp	AR-M350		OK(Parallel only)	
609	Sharp	AR-M400		OK(Parallel only)	
610	Sharp	AR-M450		OK(Parallel only)	
611	RICOH	NF3570		OK	
612	Brother	DCP-385C	OK	—	—
613	Brother	MFC 4800	OK	OK	OK
614	Brother	MFC 4800J	OK	OK	OK
615	Brother	MFC 6800	OK	OK	OK
616	Brother	MFC 7220	OK	OK	OK
617	Brother	MFC 7420	OK	OK	OK
618	Brother	MFC 7820N	OK	OK	OK
619	Brother	MFC 8840D	OK	OK	OK
620	Brother	MFC 210C	OK		OK
621	Brother	MFC 235C	OK	—	—
622	Brother	MFC 240C	OK		OK
623	Brother	DCP-7030	OK		OK
624	Brother	HL1260		OK	
625	Brother	HL 2030	—	—	OK
626	Brother	HL 2035	—	—	OK
627	Brother	HL-2040			
628	Brother	HL-2140	OK	—	OK
629	Brother	HL-2170W	OK		OK
630	Brother	IntelliFax 2820	OK		OK
631	Zhendan	AD-166			
632	Zhendan	AD-216			
633	Zhendan	AD-226			
634	DELL	DELL 1100			
635	Zonerich	AB-80K			
636	OKI	OKI 5530			
637	OKI	OKI Microline 391		OK	
638	OKI	OKI B4350	OK	OK	OK
639	Jicheng	Jicheng 5890			
640	MITAC	MITAC		OK	
641	BENQ	BENQ CM3000	OK		OK
642	Avision	MF 3200	OK		OK
643	Avision	MF 3230	OK		OK
644	Citizen	GSX230		OK	
645	DATAMAX	I-4208		OK	
646	DATAMAX	I-4308		OK	
647	DOCUJET	1610F	OK	OK	OK
648	DOCUJET	UA1610	OK	OK	OK
649	FUTEK	F8000		OK	
650	FUTEK	F84+		OK	
No.	Manufacture	Model	TL-PS110U	TL-PS110P	TL-WPS510U
651	FUTEK	F86+		OK	
652	Kyocera	FS-1010	OK	OK	OK
653	Kyocera	FS-1010KX	OK		OK
654	Kyocera	FS-1020	OK	OK	OK
655	Kyocera	FS-1920	OK	OK	OK
656	Kyocera	FS-2000D	OK	OK	OK
657	Kyocera	FS-820	OK	OK	OK
658	Kyocera	FS-920	OK	OK	OK
659	Kyocera	FS-6020	OK	OK	OK
660	Kyocera	FS-6026	OK	OK	OK