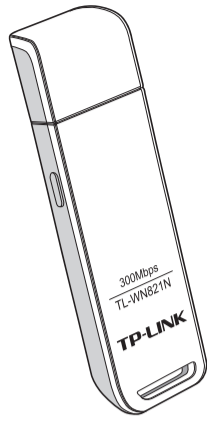


Quick Installation Guide

300Mbps Wireless N USB Adapter

System requirement:
Windows 8.1 Windows 8 Windows 7
Windows Vista Windows XP



For more information, please visit our website: <http://www.tp-link.com>

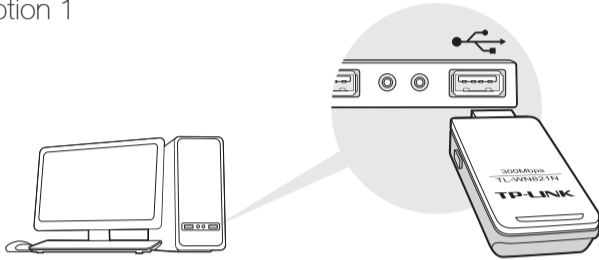


7106504741 REV6.0.0

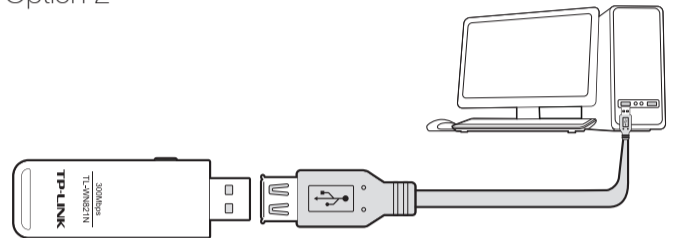
1 Connect to a Computer

Insert the adapter into a USB port on your computer, either directly or via the USB cable provided.

Option 1



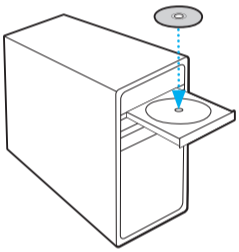
Option 2



Note: In Windows XP, a Found New Hardware Wizard window will pop up after the adapter has been inserted. Please click **Cancel**.

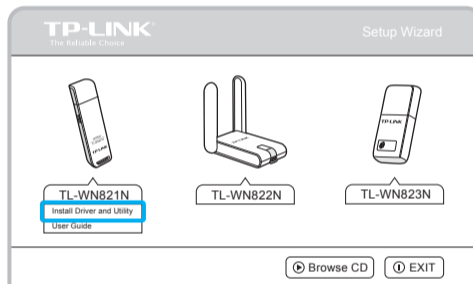
2 Install the Software

* You can also download the driver and utility at www.tp-link.com/en/ if your computer can access the Internet via a wired connection.

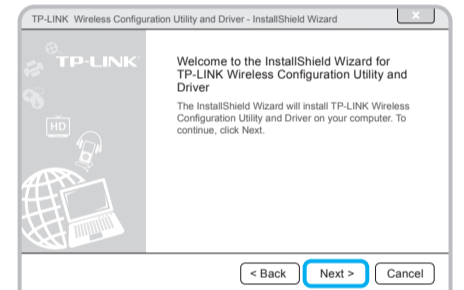


Note:
If the Resource CD screen does not display, browse the files on the CD and double-click **Autorun.exe**.

Insert the TP-LINK resource CD into the CD-ROM drive. The **Resource CD** screen will pop up automatically.



Select the model TL-WN821N and click **Install Driver and Utility**.



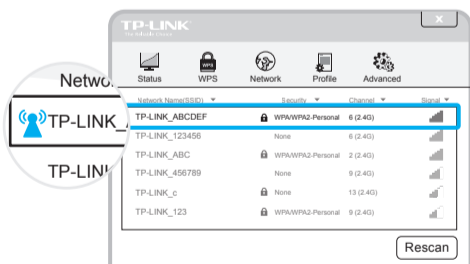
The **Install Shield Wizard** window will appear. Click **Next** and follow the instructions to finish the installation process.

3 Join a Wireless Network

For Windows 8/7/Vista/XP users:

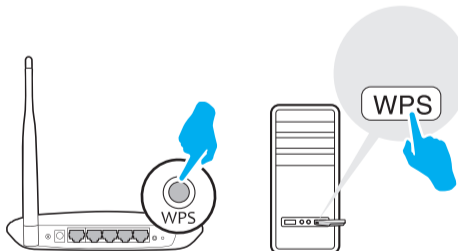
You can join a wireless network using the TWCU (TP-LINK Wireless Configuration Utility), or WPS (Wi-Fi Protected Setup) if your wireless network supports it.

Via TWCU:

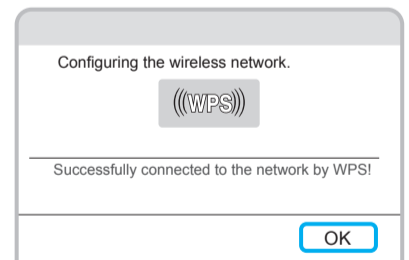


Select your target wireless network from the list and click **Connect**. If the network is secure, enter its password. The symbol indicates a successful connection.

Via WPS:



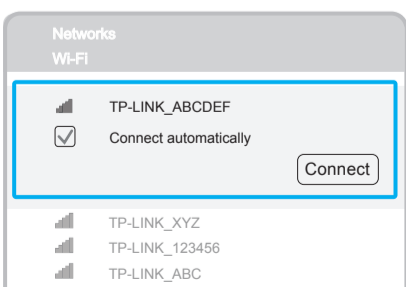
Press the **WPS** button on your wireless router or gateway. Within 2 minutes, press and hold the WPS button on the adapter for 3 seconds.



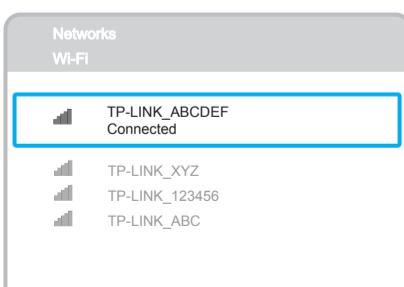
The connection process takes a few minutes and you will see the above screen when it is successful.

For Windows 8.1 users:

Please use the windows built-in wireless utility to join a wireless network.



Click the icon at the bottom of your screen, and a network list will appear. Select your target network and then click **Connect**. If the network is secure, enter its password.



The connection process takes a few seconds and you will see the above screen when it is successful.