

Spare parts 3D printer



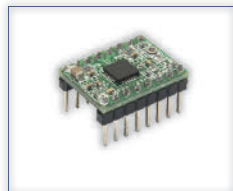
7350-31/SP
EXTRUDER



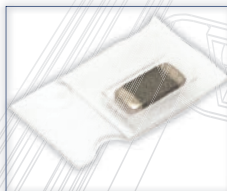
MR5SQ078078/SP
SQUARE NUT M5 7.8 x 7.8 mm



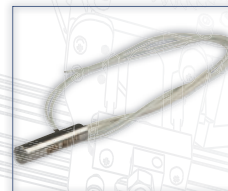
EXT8200TRB
TENSION RELIEF BRACKET (for extruder)



A4988/SP
STEPPER MOTOR DRIVER



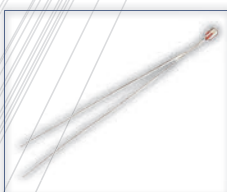
NTC100K-1206/SP
THERMISTOR NTC 100K SMD
10% 2-PIN 1206



PCH1533
PRINTER CARTRIDGE HEATER -
HEATING TUBE: 15V - 33W



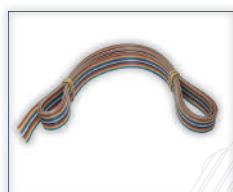
BELT6T5/1500/SP
TOOTHED BELT - RUBBER 6T5
1500MM



NTCMJB2/SP
NTC EXTRUDER (VERSION 1)



EXT8200HB
HEATER BLOCK (for extruder)



FC16C-3/SP
FLAT CABLE MULTI-COLOR
LENGTH : 3 M



P8200BED/SP
PCB FOR BED PLATE



EXT8200TRI
TENSION RELIEF ISOLATOR (for extruder)



LM8UU/SP
LINEAR BEARING 8MM



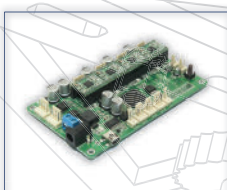
PSK8200/SP
POWER ADAPTER 15VDC 100W



EXT8200FG
FILAMENT GUIDE - ISOLATOR
(for extruder)



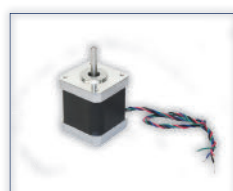
LM10UU/SP
LINEAR BEARING 10MM



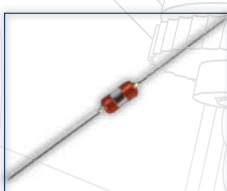
VK8200/SP
CPU BOARD



NEW
ZC3DJT16
Flexible Z-axis coupling



MOTS4/SP
STEPPER MOTOR 2.5 A STEP 1.8



NTC104LAF/SP
NTC EXTRUDER (VERSION 2)



NOZ8200/SP
SPARE NOZZLE ASSEMBLY



MP8200SET/SP
SET BLACK PLASTIC PARTS

Specifications

- quantity: 1
- diameter: 16mm / 0.63"
- length: 23mm / 0.91"
- inside diameter: 5mm (0.20") / 8mm (0.31")
- material: 7075 aluminium
- max torque: 1Nm
- axial flex: +/- 0.4mm (0.0157")
- lateral flex: 0.1mm (0.004")
- weight: 8.1g (0.2857 oz)