

U.I. Lapp GmbH	DATASHEET	
	Conductor end sleeves AH, not insulated	62120260 14.11.2013

Uninsulated/not-insulated conductor end sleeves for cabinet builders



Application range
Control cabinet wiring

Benefits
Slightly funnel-shaped opening makes it easy to slip it onto the core

Norm references / Approvals
In accordance with DIN 46228

Note
For processing tools see the keyword index "crimping pliers for conductor end sleeves"
Other sizes are available upon request

Remark
Other sizes are available upon request.
Photographs are not to scale and do not represent detailed images of the respective products.

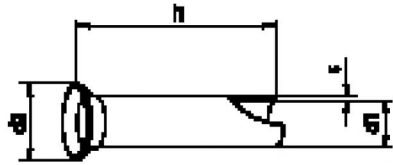


Technical Data

Article designation:	AH DIN 6/10
For mm ² :	6
AWG:	10
l1 mm:	10
d 1 mm:	3.5
d 2 mm:	4.7
s mm:	0.2
Pieces / PU:	500
Material:	Tinned electrolyte copper
Temperature range:	max. +200°C

Product Management	Document: Conductor end sleeves AH, not insulated	1 / 2
--------------------	---	-------

U.I. Lapp GmbH	<h1>DATASHEET</h1>	 LAPP GROUP
	Conductor end sleeves AH, not insulated	62120260 14.11.2013



Product Management	Document: Conductor end sleeves AH, not insulated	2 / 2
--------------------	---	-------