

U.I. Lapp GmbH	<b>DATASHEET</b>	
	<b>EPIC® H-A 32</b>	<b>10533000</b> <b>14.11.2013</b>

H-A inserts with screw termination up to 2.5 mm<sup>2</sup> wire cross section  
 Slim connector insert for standard application  
 Easy to service screw connection  
 Universal for current and voltage transmission



Industrial machinery and plant engineering



Assembly time



Space requirement

**Info**

Slim standard insert, easy to connect by screw  
 Universal for current and voltage transmission

**Application range**

Machine and equipment manufacturing  
 Control engineering

**Remark**

Photographs are not to scale and do not represent detailed images of the respective products.

Product Management	Document: EPIC® H-A 32	1 / 3
--------------------	------------------------	-------

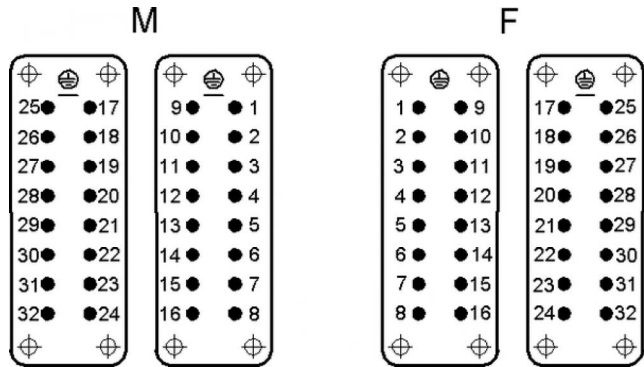
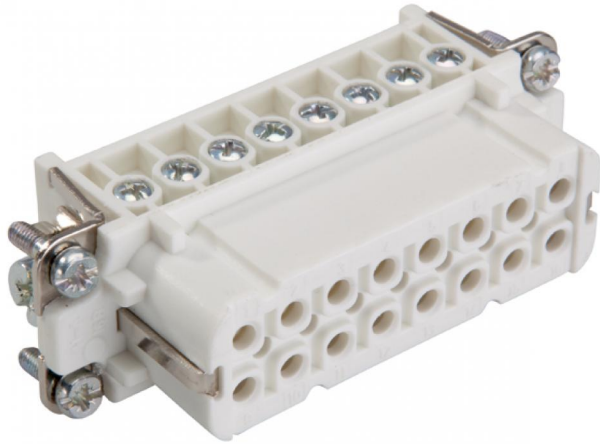
U.I. Lapp GmbH	<b>DATASHEET</b>	
	<b>EPIC® H-A 32</b>	<b>10533000</b> <b>14.11.2013</b>

### Technical Data

Article:	H-A 16 BS
Version:	female
Contacts:	1 - 16
Pieces / PU:	5
Rated voltage (V):	IEC: 250 V UL: 600 V CSA: 600 V
Rated impulse voltage:	4 kV
Rated current (A):	IEC: 16 A UL: 14 A CSA: 16 A
Contact resistance:	1.5 - 4 mohm
Contacts:	Copper alloy, hard silver-plated
Number of contacts:	16 + PE
Termination methods:	Screw termination: 0.5 - 2.5 mm <sup>2</sup> (2.5 mm <sup>2</sup> with conductor end sleeves depending on the crimping profile)
Cycle of mechanical operation:	100
Temperature range:	-40 °C to +100 °C, short-term up to +125 °C
VDE-tested:	Certified production control: VDE-REG. no.: B437 UL-tested: UL File Number: E75770
Degree of soiling:	3

Product Management	Document: EPIC® H-A 32	2 / 3
--------------------	------------------------	-------

U.I. Lapp GmbH	<h1>DATASHEET</h1>	
	<b>EPIC® H-A 32</b>	10533000 14.11.2013



PN 0486 / 01\_03.10                      ©2012 Lapp Group - Technical changes reserved  
Photographs are not to scale and do not represent detailed images of the respective products.