

| | | |
|-------------------|--|--|
| U.I. Lapp GmbH | <h1>DATASHEET</h1> |  |
| | EPIC® H-BE 10 Screw termination | 10192100 14.11.2013 |

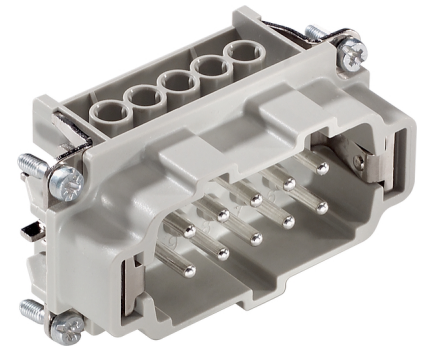
Standard inserts with screw termination, crimp termination and cage clamp termination
Standard inserts with screw, crimp and cage clamp termination
The EPIC® H-BE series is suitable for applications that require a reliable connection when working with high voltages and currents



Robust



Temperature-resistant



Info

Multifunctional insert for versatile applications
Screw, crimp and cage clamp version - freely combinable

Application range

Mechanical engineering
Light & sound technology
Plastics industry

Remark

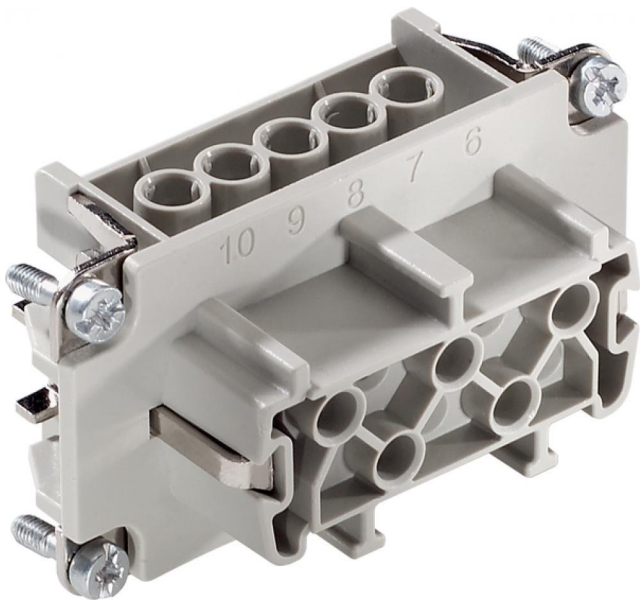
Photographs are not to scale and do not represent detailed images of the respective products.

Technical Data

| | |
|--------------------------------|--|
| Article: | H-BE 10 SS |
| Version: | male |
| Contacts: | 1 - 10 |
| Pieces / PU: | 10 |
| Rated voltage (V): | IEC: 500 V UL: 600 V CSA: 600 V |
| Rated impulse voltage: | 6 kV |
| Rated current (A): | IEC: 16 A UL: 16 A CSA: 16 A |
| Contact resistance: | < 2 mOhm |
| Contacts: | Copper alloy, hard silver-plated |
| Number of contacts: | 10 + PE |
| Termination methods: | Screw termination: 0.5 - 2.5 mm ² |
| Cycle of mechanical operation: | 100 |
| Temperature range: | -40 °C to +100 °C, short-term up to +125 °C |
| VDE-tested: | Certified production control: VDE-REG. no.: B437 UL-tested: UL File Number: E75770 |
| Degree of soiling: | 3 |

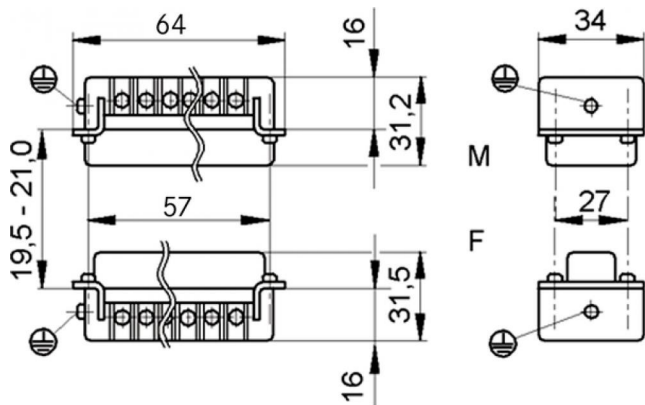
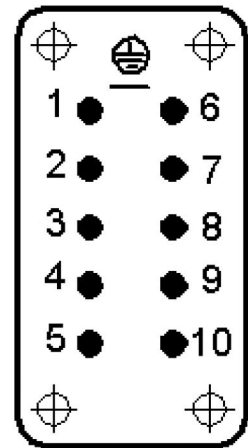
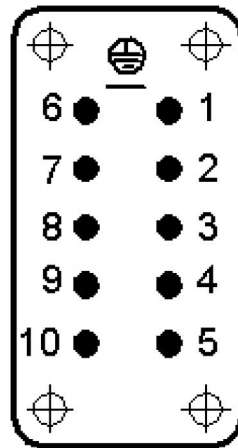
| | | |
|--------------------|---|-------|
| Product Management | Document: EPIC® H-BE 10 Screw termination | 1 / 2 |
|--------------------|---|-------|

| | | |
|-------------------|--|--|
| U.I. Lapp GmbH | <h1>DATASHEET</h1> |  |
| | EPIC® H-BE 10 Screw termination | 10192100 14.11.2013 |



M

F



| | | |
|--------------------|---|-------|
| Product Management | Document: EPIC® H-BE 10 Screw termination | 2 / 2 |
|--------------------|---|-------|