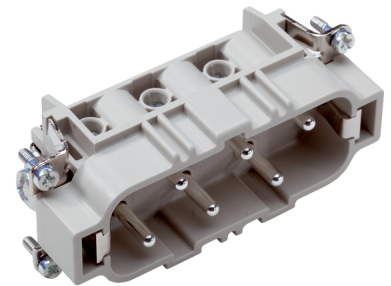


U.I. Lapp GmbH	DATASHEET	
	EPIC® H-BS 12	10170600 14.11.2013

Inserts for high currents.
 High rating for currents up to 35 A
 Screw termination up to a conductor cross section of 6 mm²
 Two H-BS 6 inserts with different contact-numbering for one housing.



Industrial machinery and plant engineering



Robust



Temperature-resistant

Info

Standard insert for currents up to 35A

Application range

Plant engineering
 Mechanical engineering
 Drive systems

Remark

Photographs are not to scale and do not represent detailed images of the respective products.

Product Management	Document: EPIC® H-BS 12	1 / 3
--------------------	-------------------------	-------

U.I. Lapp GmbH	DATASHEET	
	EPIC® H-BS 12	10170600 14.11.2013

Technical Data

Article:	H-BS 6 SS
Version:	male
Wire protection:	yes
Contacts:	7 - 12
Pieces / PU:	5
Rated voltage (V):	IEC: 500 V UL: 600 V CSA: 600 V Conductor - conductor: 690 V
Rated impulse voltage:	6 kV
Rated current (A):	IEC: 35 A UL: 35 A CSA: 35 A
Contact resistance:	< 2 mOhm
Contacts:	Copper alloy, hard silver-plated
Number of contacts:	12 + PE
Termination methods:	Screw termination: 0.5 - 6 mm ²
Cycle of mechanical operation:	100
Temperature range:	-40 °C to +100 °C, short-term up to +125 °C
VDE-tested:	Certified production control: VDE-REG. no.: B437 UL-tested: UL File Number: E75770
Degree of soiling:	3

Product Management	Document: EPIC® H-BS 12	2 / 3
--------------------	-------------------------	-------

U.I. Lapp GmbH	DATASHEET	
	EPIC® H-BS 12	10170600 14.11.2013

