

U.I. Lapp GmbH	<b>DATASHEET</b>	
	<b>EPIC® H-BVE 3</b>	<b>10210110</b> <b>14.11.2013</b>

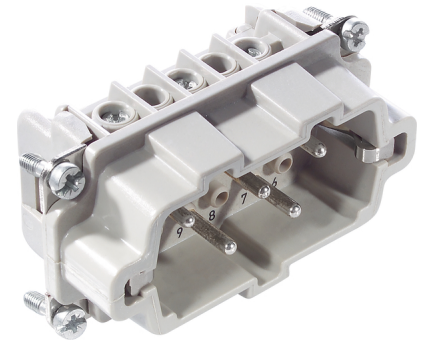
These high-voltage inserts are additionally equipped with 2 switching contacts  
 These high-voltage inserts are additionally equipped with 2 switching contacts  
 With the relevant wiring, the lagging switch contacts interrupt the power supply  
 before the working contacts are separated



Industrial machinery and plant engineering



Temperature-resistant



### Info

Multipole insert with lagging switch contacts  
 Switching operations possible for disconnecting under load

### Application range

Plant engineering  
 Mechanical engineering

### Remark

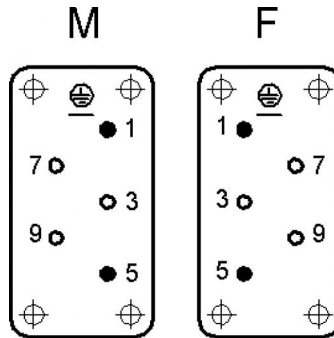
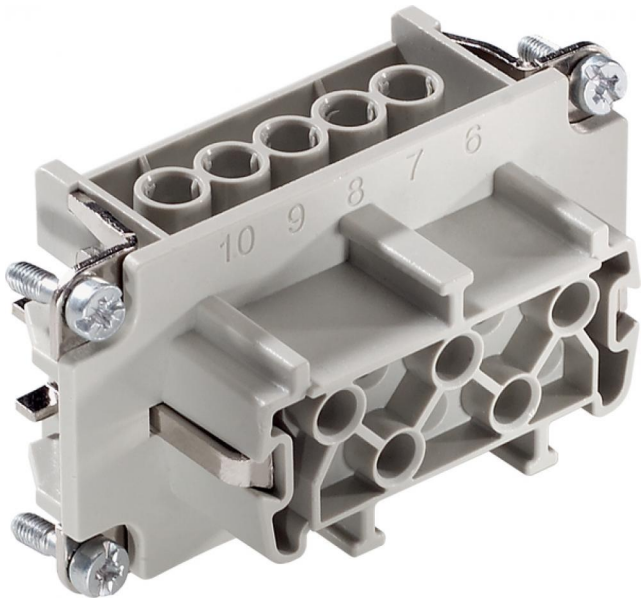
Photographs are not to scale and do not represent detailed images of the respective products.

### Technical Data

Article:	H-BVE 3 SS
Version:	male
Contacts:	3 + 2
Pieces / PU:	10
Rated voltage (V):	IEC: 630 V UL: 600 V CSA: 600V
Rated impulse voltage:	6 kV
Rated current (A):	IEC: 16 A UL: 16 A CSA: 16 A
Contact resistance:	< 2 mOhm
Contacts:	Copper alloy, hard silver-plated
Number of contacts:	3 + 2 + PE
Termination methods:	Screw termination: 0.5 - 2.5 mm <sup>2</sup>
Cycle of mechanical operation:	100
Temperature range:	-40 °C to +100 °C, short-term up to +125 °C
VDE-tested:	Certified production control: VDE-REG. no.: B437 UL-tested: UL File Number: E75770
Degree of soiling:	3

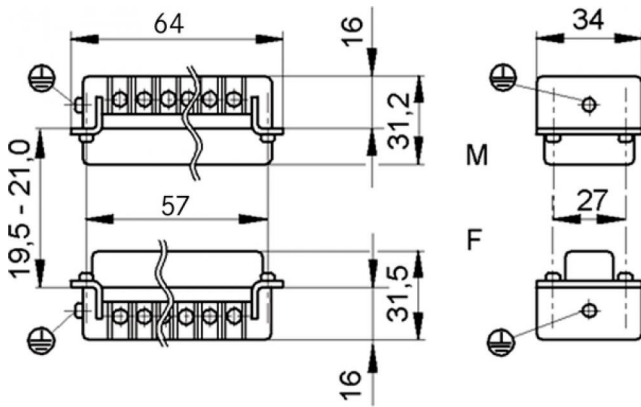
Product Management	Document: EPIC® H-BVE 3	1 / 2
--------------------	-------------------------	-------

U.I. Lapp GmbH	<h1>DATASHEET</h1>	
	<b>EPIC® H-BVE 3</b>	10210110 14.11.2013



● Schaltkontakt  
mating contact  
contact de branchement

○ Arbeitskontakt  
working contact  
contact de travail



Product Management	Document: EPIC® H-BVE 3	2 / 2
--------------------	-------------------------	-------