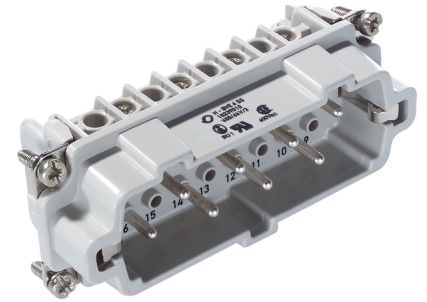


U.I. Lapp GmbH	DATASHEET	
	EPIC® H-BVE 6	10239110 14.11.2013

These high-voltage inserts are additionally equipped with 2 switching contacts
 These high-voltage inserts are additionally equipped with 2 switching contacts
 With the relevant wiring, the lagging switch contacts interrupt the power supply
 before the working contacts are separated



Temperature-resistant



Info

Multipole insert with lagging switch contacts
 Switching operations possible for disconnecting under load

Application range

Mechanical engineering
 Plant engineering

Remark

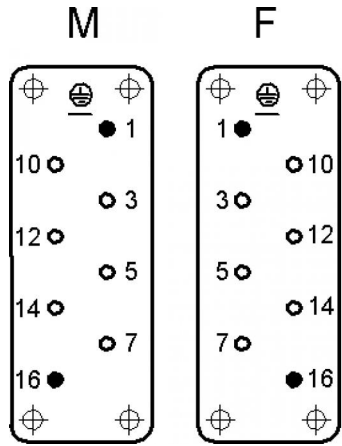
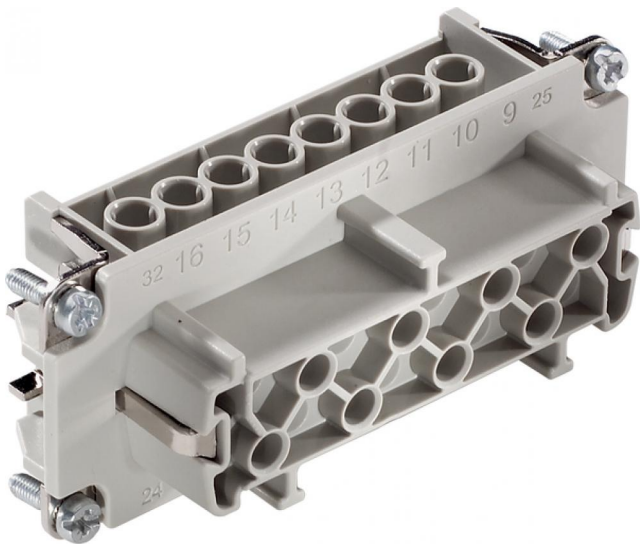
Photographs are not to scale and do not represent detailed images of the respective products.

Technical Data

Article:	H-BVE 6 SS
Version:	male
Contacts:	6 + 2
Pieces / PU:	5
Rated voltage (V):	IEC: 630 V UL: 600 V CSA: 600V
Rated impulse voltage:	6 kV
Rated current (A):	IEC: 16 A UL: 16 A CSA: 16 A
Contact resistance:	< 2 mOhm
Contacts:	Copper alloy, hard silver-plated
Number of contacts:	6 + 2 + PE
Termination methods:	Screw termination: 0.5 - 2.5 mm ²
Cycle of mechanical operation:	100
Temperature range:	-40 °C to +100 °C, short-term up to +125 °C
VDE-tested:	Certified production control: VDE-REG. no.: B437 UL-tested: UL File Number: E75770
Degree of soiling:	3

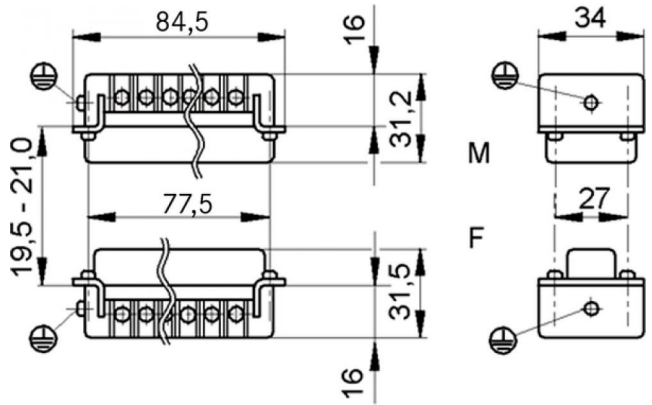
Product Management	Document: EPIC® H-BVE 6	1 / 2
--------------------	-------------------------	-------

U.I. Lapp GmbH	<h1>DATASHEET</h1>	
	EPIC® H-BVE 6	10239110 14.11.2013



●
Schaltkontakte
mating contact
contact de branchement

○
Arbeitskontakt
working contact
contact de travail



PN 0486/01_03.10 ©2012 Lapp Group - Technical changes reserved
 Photographs are not to scale and do not represent detailed images of the respective products.