

U.I. Lapp GmbH	<b>DATASHEET</b>	
	<b>EPIC® H-DD 216</b>	<b>11286300</b> <b>14.11.2013</b>

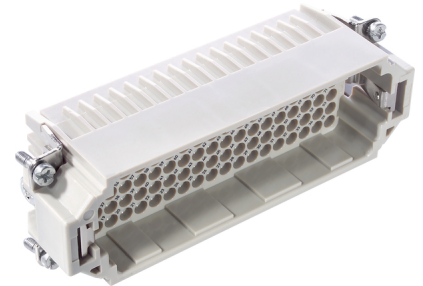
The H-DD series with machined crimp contacts - for a high number of pin in very tight spaces.  
The H-DD series with machined contacts is designed for a high number of pins in very tight spaces. This allows for smaller housing types to be chosen.



Industrial machinery and plant engineering



Space requirement



### Info

Highest packing density for compact connectors

### Application range

Mechanical engineering  
Light & sound technology  
Plastics industry

### Remark

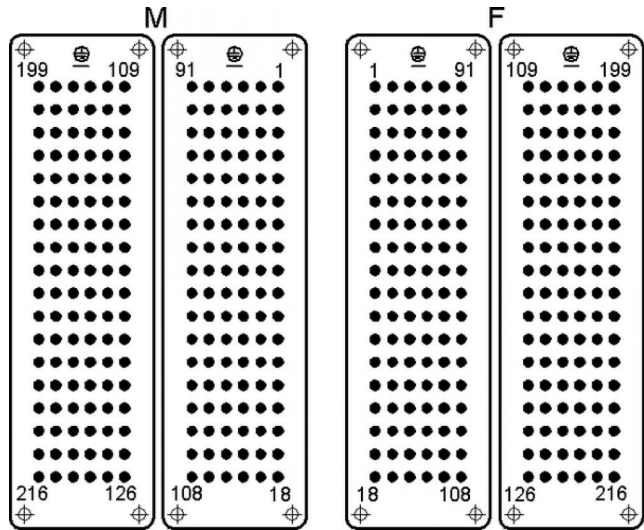
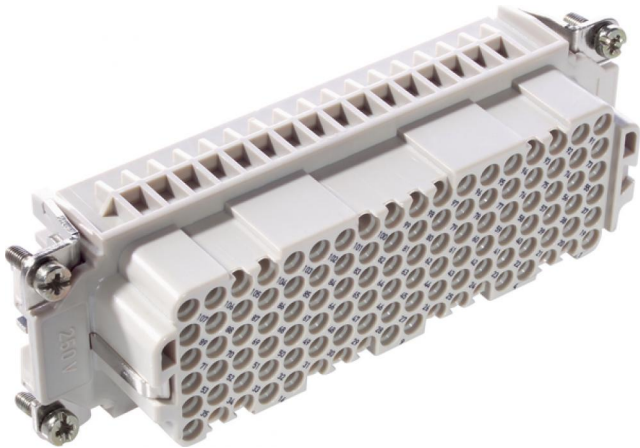
Photographs are not to scale and do not represent detailed images of the respective products.

### Technical Data

Article:	H-DD 108 BCM
Version:	female
Article designation:	machined
Contacts:	1 - 108
Pieces / PU:	5
Rated voltage (V):	IEC: 250 V UL: 600 V CSA: 600 V
Rated impulse voltage:	2.5 kV
Rated current (A):	IEC: 10 A UL: 8.5 A CSA: 10 A
Contact resistance:	< 3 mOhm
Contacts:	Copper alloy, hard silver/gold-plated
Number of contacts:	108 + PE
Termination methods:	Crimp termination: 0.14 - 2.5 mm <sup>2</sup>
Cycle of mechanical operation:	100
Temperature range:	-40 °C to +100 °C, short-term up to +125 °C
VDE-tested:	Certified production control: VDE-REG. no.: B437 UL-tested: UL File Number: E75770
Degree of soiling:	2

Product Management	Document: EPIC® H-DD 216	1 / 2
--------------------	--------------------------	-------

U.I. Lapp GmbH	<h1>DATASHEET</h1>	
	<b>EPIC® H-DD 216</b>	11286300 14.11.2013



Product Management	Document: EPIC® H-DD 216	2 / 2
--------------------	--------------------------	-------