

U.I. Lapp GmbH	<h1>DATASHEET</h1>	
	EPIC® MC Module: HE 4pole	10399000 14.11.2013

The mixed assembly guarantees high flexibility. For applications in mechanical and plant engineering, for printing machines and slide-in technology.

The mix of different functions in one plug guarantees high flexibility

Assembly of individual connectors, suitable for different applications



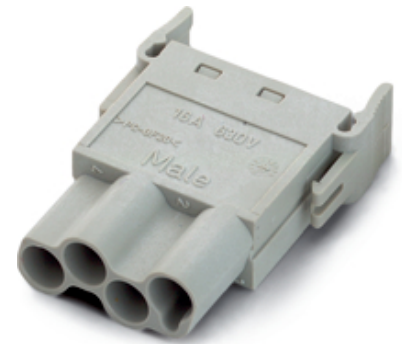
Automation



Industrial machinery and plant engineering



Wind Energy



Info

Power and signal modules can be used together in one housing

Application range

Plant engineering

Printing machines

Control engineering

Remark

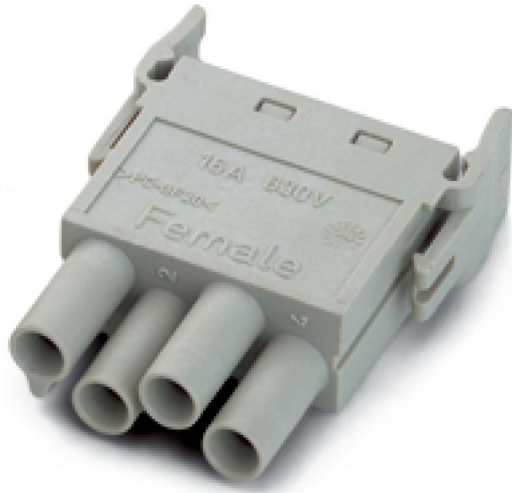
Photographs are not to scale and do not represent detailed images of the respective products.

Technical Data

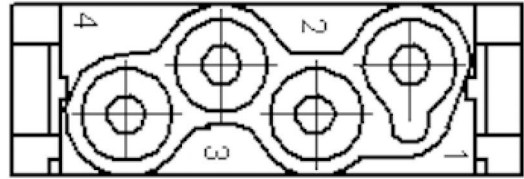
Article:	MCS 4 CM
Version:	male
Contacts:	4
Pieces / PU:	10
Rated voltage (V):	630 V
Rated current (A):	25 A
Contact resistance:	< 2 mOhm
Contacts:	Copper alloy, hard silver-plated
Number of contacts:	4
Termination methods:	Crimp termination: 0.5 - 4.0 mm ²
Cycle of mechanical operation:	100
Temperature range:	-40 °C to +100 °C, short-term up to +125 °C
Degree of soiling:	3

Product Management	Document: EPIC® MC Module: HE 4pole	1 / 2
--------------------	-------------------------------------	-------

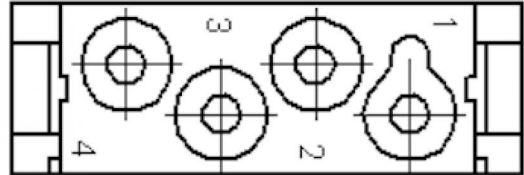
U.I. Lapp GmbH	<h1>DATASHEET</h1>	 LAPP GROUP
	EPIC® MC Module: HE 4pole	10399000 14.11.2013



M



F



Product Management	Document: EPIC® MC Module: HE 4pole	2 / 2
--------------------	-------------------------------------	-------