

U.I. Lapp GmbH	<h1>DATASHEET</h1>	
	EPIC® H-BE 6 Cage clamp	10400000 14.11.2013

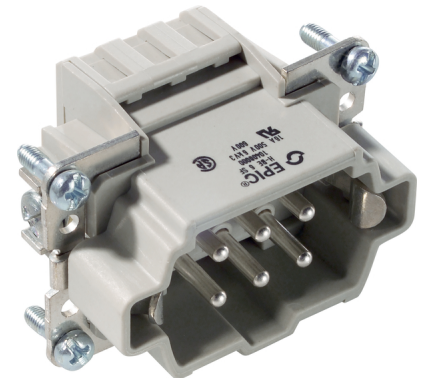
Standard inserts with screw termination, crimp termination and cage clamp termination
Standard inserts with screw, crimp and cage clamp termination
The EPIC® H-BE series is suitable for applications that require a reliable connection when working with high voltages and currents



Robust



Temperature-resistant



Info

Multifunctional insert for versatile applications
Screw, crimp and cage clamp version - freely combinable

Application range

Mechanical engineering
Light & sound technology
Plastics industry

Remark

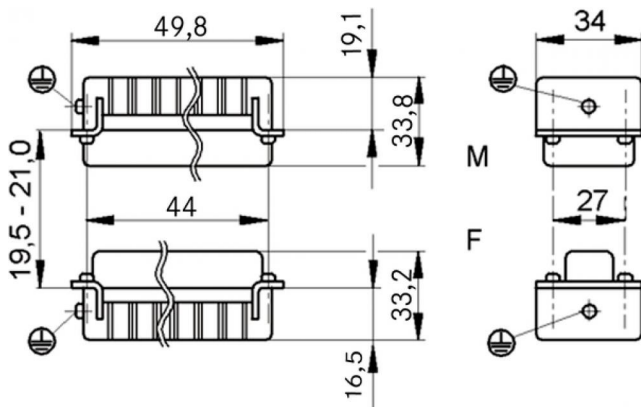
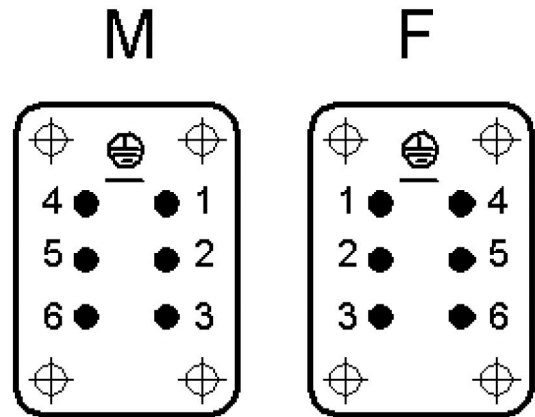
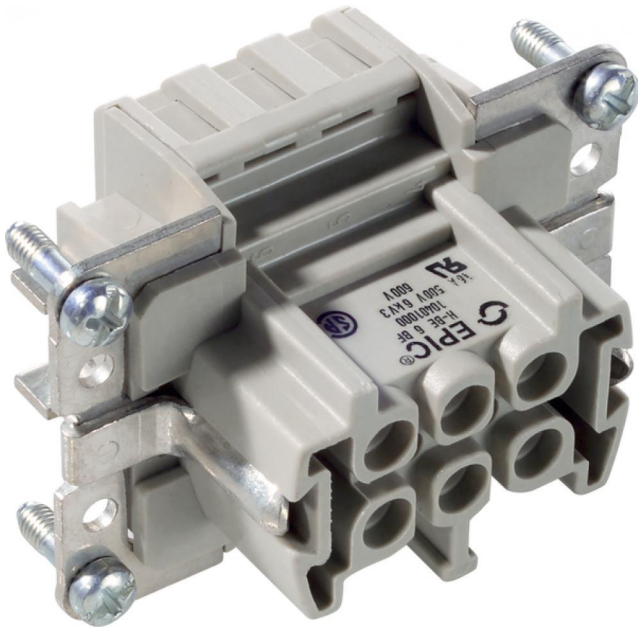
Photographs are not to scale and do not represent detailed images of the respective products.

Technical Data

Article:	H-BE 6 SF
Version:	male
Contacts:	1 - 6
Pieces / PU:	10
Rated voltage (V):	IEC: 500 V UL: 600 V CSA: 600 V
Rated impulse voltage:	6 kV
Rated current (A):	IEC: 16 A UL: 16 A CSA: 16 A
Contact resistance:	1.5 - 4 mohm
Contacts:	Copper alloy, hard silver-plated
Number of contacts:	6 + PE
Termination methods:	Cage clamp termination: 0.5 - 2.5 mm ²
Cycle of mechanical operation:	100
Temperature range:	-40 °C to +100 °C, short-term up to +125 °C
VDE-tested:	UL-tested: UL File Number: E75770
Degree of soiling:	3

Product Management	Document: EPIC® H-BE 6 Cage clamp	1 / 2
--------------------	-----------------------------------	-------

U.I. Lapp GmbH	<h1>DATASHEET</h1>	
	EPIC® H-BE 6 Cage clamp	10400000 14.11.2013



Product Management	Document: EPIC® H-BE 6 Cage clamp	2 / 2
--------------------	-----------------------------------	-------