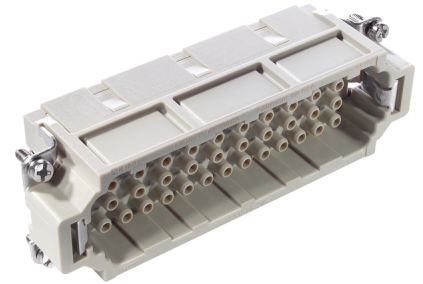


U.I. Lapp GmbH	<b>DATASHEET</b>	
	<b>EPIC® H-EE 92</b>	<b>10186400</b> <b>14.11.2013</b>

H-EE inserts with high contact density based on the proven H-BE series.  
The H-EE inserts with machined contacts for a high number of pins in very tight spaces.  
For assembly in H-B housing



Industrial machinery and plant engineering



Temperature-resistant

### Info

Inserts with high contact density for medium power

### Application range

Mechanical engineering  
Plant engineering

### Remark

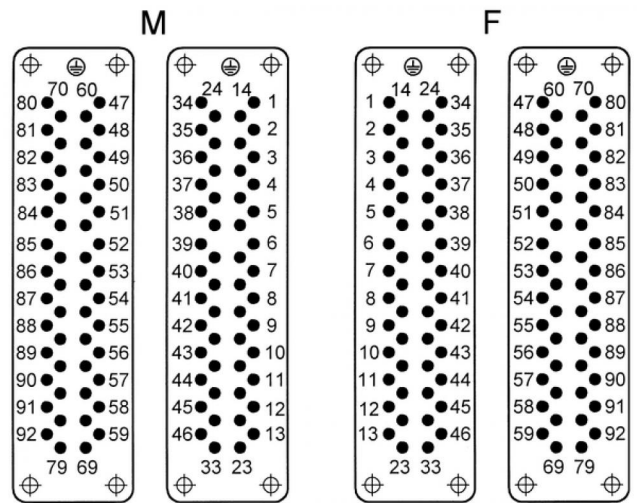
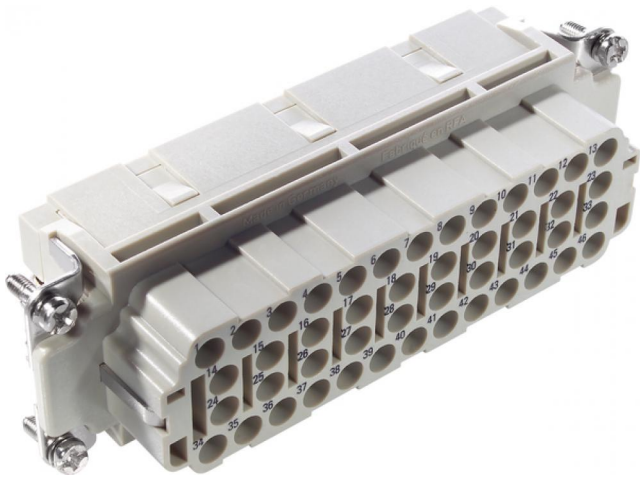
Photographs are not to scale and do not represent detailed images of the respective products.

### Technical Data

Article:	H-EE 46 SC
Version:	male
Article designation:	machined
Contacts:	1 - 46
Pieces / PU:	5
Rated voltage (V):	IEC: 500 V UL: 600 V CSA: 600 V
Rated impulse voltage:	6 kV
Rated current (A):	IEC: 16 A UL: 16 A CSA: 16 A
Contact resistance:	< 2 mOhm
Contacts:	Copper alloy, hard silver/gold-plated
Number of contacts:	46 + PE
Termination methods:	Crimp termination: 0.5 - 4.0 mm <sup>2</sup>
Cycle of mechanical operation:	100
Temperature range:	-40 °C to +100 °C, short-term up to +125 °C
Degree of soiling:	3

Product Management	Document: EPIC® H-EE 92	1 / 2
--------------------	-------------------------	-------

U.I. Lapp GmbH	<h1>DATASHEET</h1>	
	<b>EPIC® H-EE 92</b>	<b>10186400</b> <b>14.11.2013</b>



Product Management	Document: EPIC® H-EE 92	2 / 2
--------------------	-------------------------	-------