

U.I. Lapp GmbH	<h1>DATASHEET</h1>	
	EPIC® Modular 3.6 machined contacts	1121020C 14.11.2013

For inserts and modules of the EPIC® rectangular connectors

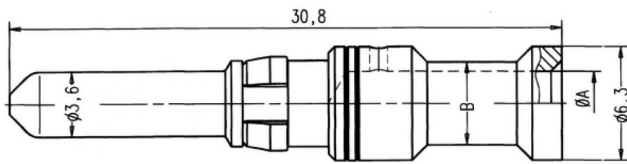


Remark

Photographs are not to scale and do not represent detailed images of the respective products.

Product Management	Document: EPIC® Modular 3.6 machined contacts	1 / 2
--------------------	---	-------

U.I. Lapp GmbH	<h1>DATASHEET</h1>	 LAPP GROUP
	EPIC® Modular 3.6 machined contacts	1121020C 14.11.2013



Product Management	Document: EPIC® Modular 3.6 machined contacts	2 / 2
--------------------	---	-------