

U.I. Lapp GmbH	DATASHEET	
	SKINDICHT® A-PG/M	52100339 14.11.2013

Adapter from a PG outer thread to a metric inner thread



Space requirement

Application range

Housings
Industrial connectors
Machines

Design

PG connection thread

Design

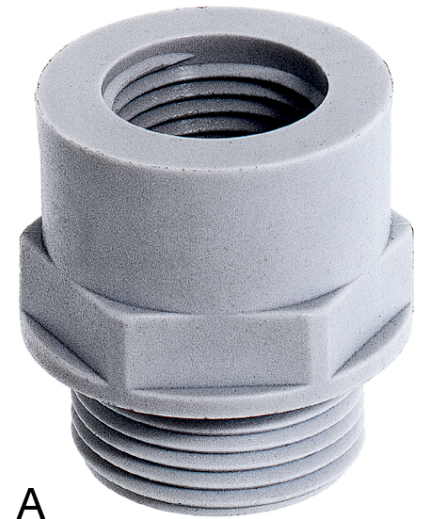
Form A = high
Form B = flat

Remark

Photographs are not to scale and do not represent detailed images of the respective products.

Technical Data

Form:	A
Thread, male PG:	PG 29
Thread, female M2:	50 x 1.5
SW (mm):	55
Pieces / PU:	10
Colour delivered:	Light grey (RAL 7035)
Material:	Polyamide, glass fibre-reinforced
Temperature range:	-40°C to +100°C



Product Management	Document: SKINDICHT® A-PG/M	1 / 2
--------------------	-----------------------------	-------

U.I. Lapp GmbH	DATASHEET	 LAPP GROUP
	SKINDICHT® A-PG/M	52100339 14.11.2013



B

Product Management	Document: SKINDICHT® A-PG/M	2 / 2
--------------------	-----------------------------	-------