

U.I. Lapp GmbH	<b>DATASHEET</b>	
	<b>SKINDICHT® A-PG/M</b>	52100344 14.11.2013

Adapter from a PG outer thread to a metric inner thread



Space requirement

### Application range

Housings  
Industrial connectors  
Machines

### Design

PG connection thread

### Design

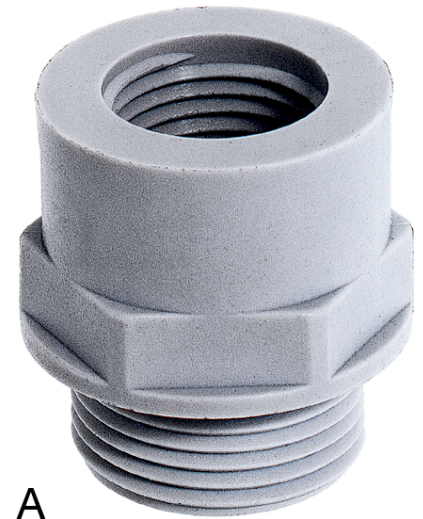
Form A = high  
Form B = flat

### Remark

Photographs are not to scale and do not represent detailed images of the respective products.

### Technical Data

Form:	A
Thread, male PG:	PG 42
Thread, female M2:	50 x 1.5
SW (mm):	60
Pieces / PU:	5
Colour delivered:	Light grey (RAL 7035)
Material:	Polyamide, glass fibre-reinforced
Temperature range:	-40°C to +100°C



Product Management	Document: SKINDICHT® A-PG/M	1 / 2
--------------------	-----------------------------	-------

U.I. Lapp GmbH	<b>DATASHEET</b>	 <b>LAPP GROUP</b>
	<b>SKINDICHT® A-PG/M</b>	<b>52100344</b> <b>14.11.2013</b>



**B**

Product Management	Document: SKINDICHT® A-PG/M	2 / 2
--------------------	-----------------------------	-------