

U.I. Lapp GmbH	<b>DATASHEET</b>	
	<b>SKINDICHT® EKU</b>	52025220 14.11.2013

Enables the use of cable glands with larger connection threads than the existing threaded holes

Assembling with a wrench

Supporting surface for spanner means scratches on the housing are avoided



Space requirement

### Application range

Machines

Devices

Housings

### Design

PG connection thread

### Remark

Photographs are not to scale and do not represent detailed images of the respective products.

### Technical Data

Article designation / sizeOuter / inner:

EKU 36/42

Pieces / PU:

25

Colour delivered:

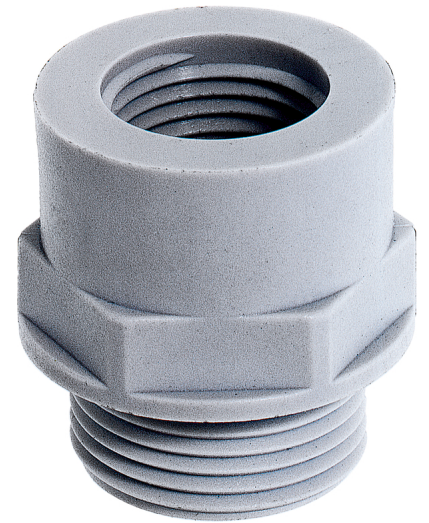
Light grey (RAL 7035)

Material:

Polyamide, glass fibre-reinforced

Temperature range:

-40°C to +100°C



Product Management	Document: SKINDICHT® EKU	1 / 1
--------------------	--------------------------	-------