

U.I. Lapp GmbH	DATASHEET	
	SKINDICHT® EKU	52025200 14.11.2013

Enables the use of cable glands with larger connection threads than the existing threaded holes

Assembling with a wrench

Supporting surface for spanner means scratches on the housing are avoided



Space requirement

Application range

Machines

Devices

Housings

Design

PG connection thread

Remark

Photographs are not to scale and do not represent detailed images of the respective products.

Technical Data

Article designation / sizeOuter / inner:

EKU 7/9

Pieces / PU:

100

Colour delivered:

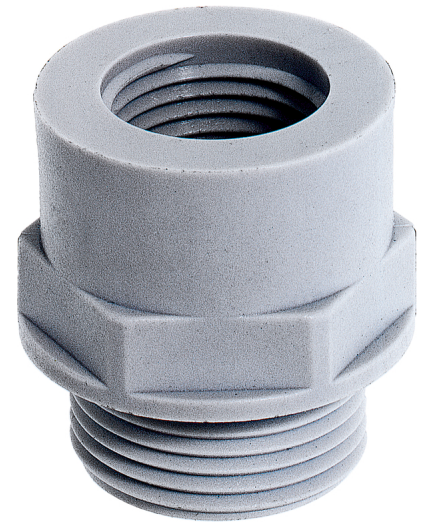
Light grey (RAL 7035)

Material:

Polyamide, glass fibre-reinforced

Temperature range:

-40°C to +100°C



Product Management	Document: SKINDICHT® EKU	1 / 1
--------------------	--------------------------	-------