

| | | |
|-------------------|--------------------------------|--|
| U.I. Lapp GmbH | DATASHEET |  |
| | SKINDICHT® KU, KUS, KUK | 52025100 14.11.2013 |

Enables the use of cable glands with smaller connection threads than the existing threaded holes
Glass fibre-reinforced for maximum mechanical stability



Space requirement

Application range

Machines
Devices
Housings

Design

PG connection thread

Design

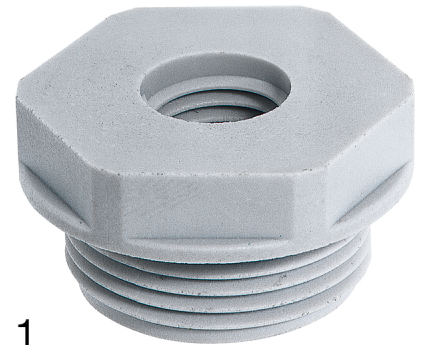
SKINDICHT® KU with hexagon and flat design
SKINDICHT® KUS with hexagon and larger height
SKINDICHT® KUK with knurled heads

Remark

Photographs are not to scale and do not represent detailed images of the respective products.

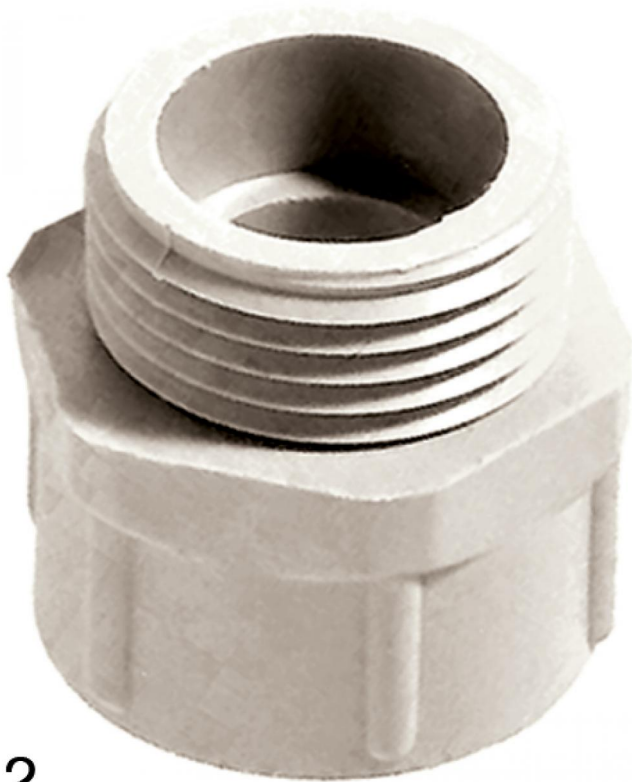
Technical Data

| | |
|--|---|
| Article designation / sizeOuter / inner: | KU 13,5/7 |
| Pieces / PU: | 50 |
| Colour delivered: | Light grey (RAL 7035) |
| Material: | Polyamide, glass fibre-reinforced |
| Temperature range: | KU, KUS: -40°C to +100°C KUK: -20°C to +80°C |



| | | |
|--------------------|-----------------------------------|-------|
| Product Management | Document: SKINDICHT® KU, KUS, KUK | 1 / 2 |
|--------------------|-----------------------------------|-------|

| | | |
|-------------------|--------------------------------|--|
| U.I. Lapp GmbH | DATASHEET |  LAPP GROUP |
| | SKINDICHT® KU, KUS, KUK | 52025100 14.11.2013 |



3

2

| | | |
|--------------------|-----------------------------------|-------|
| Product Management | Document: SKINDICHT® KU, KUS, KUK | 2 / 2 |
|--------------------|-----------------------------------|-------|