

U.I. Lapp GmbH	<b>DATASHEET</b>	
	<b>SKINDICHT® KU, KUS, KUK</b>	52025140 14.11.2013

Enables the use of cable glands with smaller connection threads than the existing threaded holes  
Glass fibre-reinforced for maximum mechanical stability



Space requirement

### Application range

Machines  
Devices  
Housings

### Design

PG connection thread

### Design

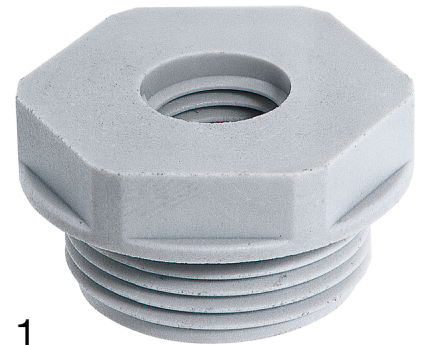
SKINDICHT® KU with hexagon and flat design  
SKINDICHT® KUS with hexagon and larger height  
SKINDICHT® KUK with knurled heads

### Remark

Photographs are not to scale and do not represent detailed images of the respective products.

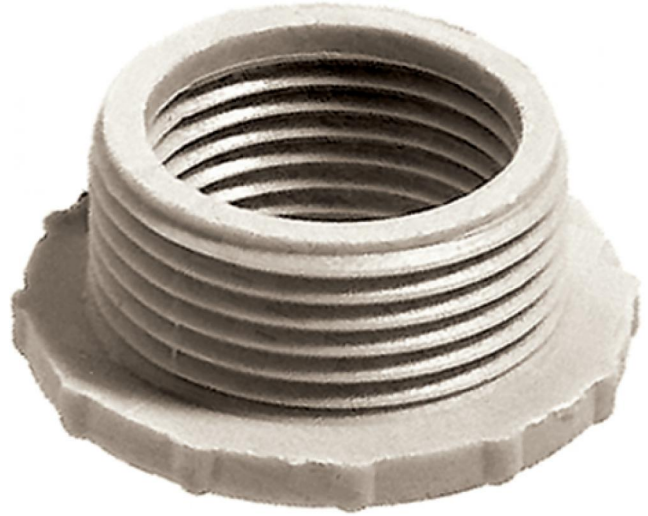
### Technical Data

Article designation / sizeOuter / inner:	KU 36/16
Pieces / PU:	25
Colour delivered:	Light grey (RAL 7035)
Material:	Polyamide, glass fibre-reinforced
Temperature range:	KU, KUS: -40°C to +100°C KUK: -20°C to +80°C



Product Management	Document: SKINDICHT® KU, KUS, KUK	1 / 2
--------------------	-----------------------------------	-------

U.I. Lapp GmbH	<b>DATASHEET</b>	 <b>LAPP GROUP</b>
	<b>SKINDICHT® KU, KUS, KUK</b>	52025140 14.11.2013



Product Management	Document: SKINDICHT® KU, KUS, KUK	2 / 2
--------------------	-----------------------------------	-------