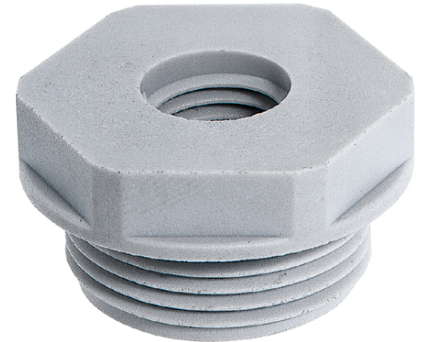


U.I. Lapp GmbH	DATASHEET	
	SKINDICHT® KU-M	52104487 14.11.2013

Enables the use of cable glands with smaller connection threads than the existing threaded holes



Assembly time



Space requirement



Connector with standard housing unit

Application range

Machines
Devices
Housings

Design

Metric connection thread acc. to EN 50262

Remark

Photographs are not to scale and do not represent detailed images of the respective products.

Technical Data

Thread, male M1:	63 x 1.5
Thread, female M2:	25 x 1.5
SW (mm):	68
Pieces / PU:	5
Colour delivered:	Light grey (RAL 7035)
Material:	Polyamide, glass fibre-reinforced
Temperature range:	-40°C to +100°C

Product Management	Document: SKINDICHT® KU-M	1 / 1
--------------------	---------------------------	-------