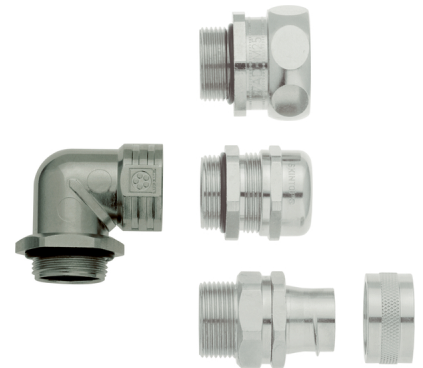


U.I. Lapp GmbH	<h1>DATASHEET</h1>	
	SKINDICHT® RWV-M without E+D	52107801 14.11.2013

Combination of different conduit glands is possible
Space- and weight-saving application due to thin cable diameters
Decrease in installation height
Cable runs parallel to the housing wall
Corrosion-resistant



Corrosion-resistant



Space requirement



Connector with standard housing unit



Temperature-resistant

Application range

Angled glands are used in areas where cables have to run in parallel to the housing wall.
Electric motor manufacturing
Machine and equipment manufacturing
Plant engineering
Light and sound applications

Design

Metric connection thread acc. to EN 50262

Note

The protection class is dependent on the combination with the various special glands. The minimum standard is IP 55.
Counter nut to be used: SKINDICHT® SM-M
Cable glands are not included in scope of delivery

Remark

Photographs are not to scale and do not represent detailed images of the respective products.

Product Management	Document: SKINDICHT® RWV-M without E+D	1 / 3
--------------------	--	-------

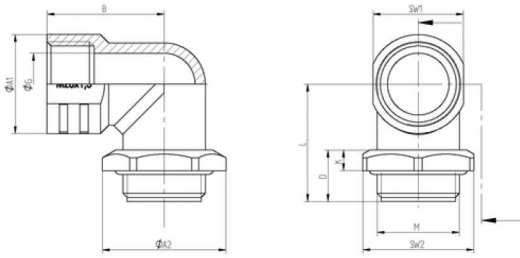
U.I. Lapp GmbH	DATASHEET	
	SKINDICHT® RWV-M without E+D	52107801 14.11.2013

Technical Data

Article designation / size:	12 x 1,5
B in mm:	21
Thread length, D (mm):	11.5
K:	5
L:	21
Ø G:	8
SW1:	14
Ø A1:	16
SW2:	17
Ø A2:	18.9
Pieces / PU:	25
Material:	Body: zinc die-casting Hexagon nut: nickel-plated brass O-ring: NBR
Protection rating:	IP 55
Temperature range:	-20°C to +100°C

Product Management	Document: SKINDICHT® RWV-M without E+D	2 / 3
--------------------	--	-------

U.I. Lapp GmbH	<h1>DATASHEET</h1>	 LAPP GROUP
	SKINDICHT® RWV-M without E+D	52107801 14.11.2013



Product Management	Document: SKINDICHT® RWV-M without E+D	3 / 3
--------------------	--	-------