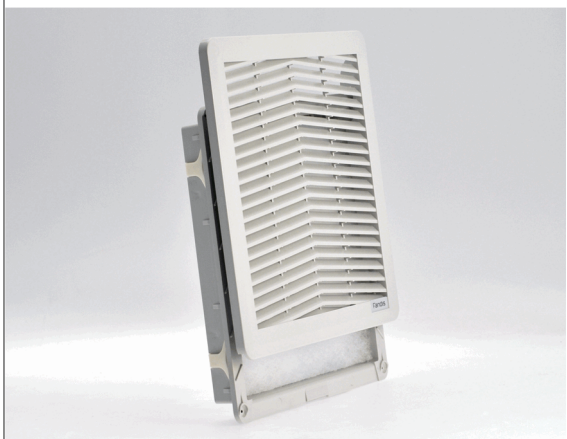


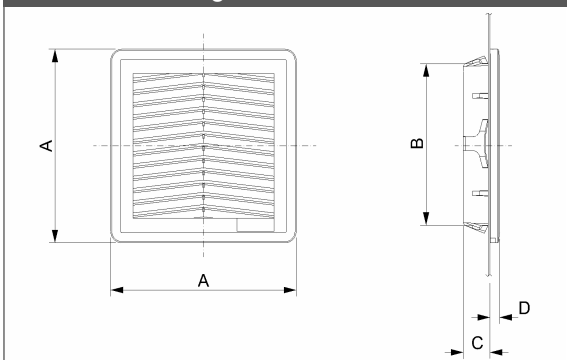
## "FF" SERIES FILTER UNITS

Description: **Filter**

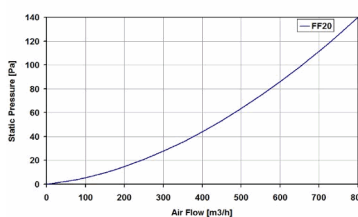
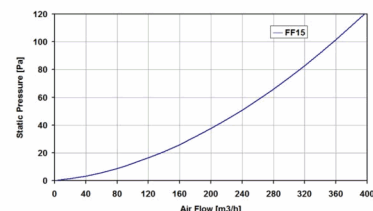
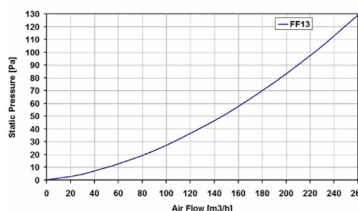
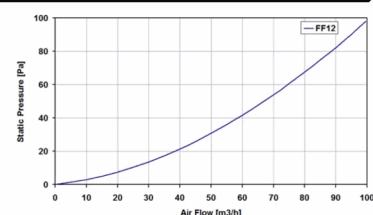
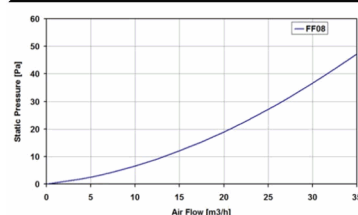
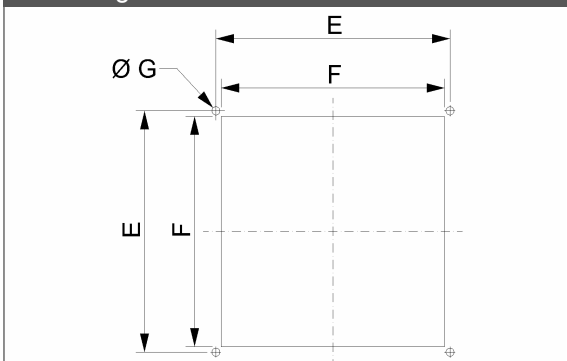


<b>Type of material:</b>	PC/ABS Alloy; PA 66 GF13 HSL for elastic clips
<b>Standard color:</b>	RAL 7035 - other colors on request
<b>Protection degree:</b>	IP54, according to EN 60529 std Type 12 according to UL 508 Std
<b>Fixing system:</b>	by elastic clips, otherwise by four self-threading screws
<b>Plate thickness:</b>	FF08 from 1 mm to 2 mm, FF12 and FF13 from 1 mm to 2.1 mm, FF15 and FF20 from 1.5 mm to 2.5 mm
<b>Storage temperature:</b>	from -40°C to + 70°C
<b>Filtering class:</b>	class G3, according to EN 779
<b>Degree of separation:</b>	85% - DIN 24185
<b>Dust retention capacity:</b>	600 g/m <sup>2</sup>
<b>Note:</b>	filter media is washable for about 10 times
<b>Approvals:</b>	CE, UL E237844

### technical drawing



### mounting cut-out



Model	A	B	C	D	E	F	G	Cross section free without media	Weight	Approvals
	(mm)	(mm)	(mm)	(mm)	(mm)	(mm)	(mm)	(cm <sup>2</sup> )	(Kg)	
FF08U	106.5	91.5	16.5	6.7	95	91.5 <sup>+1.5</sup> <sub>-0</sub>	1.8	30	0.07	CE; cURus
FF12U	150	125	21.5	7.7	131	125 <sup>+1.5</sup> <sub>-0</sub>	4.5	59	0.18	CE; cURus
FF13U	203.9	176	21.5	8	185	177 <sup>+1.5</sup> <sub>-0</sub>	4.5	134	0.26	CE; cURus
FF15U	250	223	24.9	8.9	230	223 <sup>+1.5</sup> <sub>-0</sub>	4.5	207	0.42	CE; cURus
FF20U	325	291	24.5	9.5	302	291 <sup>+1.5</sup> <sub>-0</sub>	4.5	383	0.60	CE; cURus

data with uncertainty of 15%

All specifications, data and drawing are subject to change without notice and are approximate. Please refer to our terms of sales including our warranty and limited liabilities clauses.