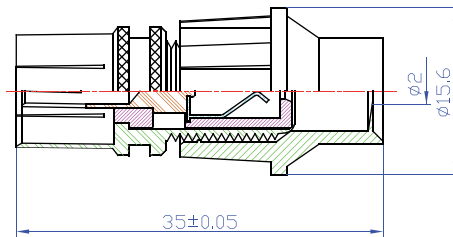




PRODUCT DATASHEET

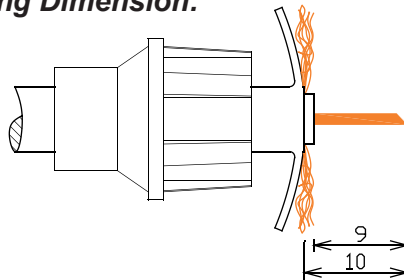
KIF

CaP System
IEC FEMALE CONNECTOR

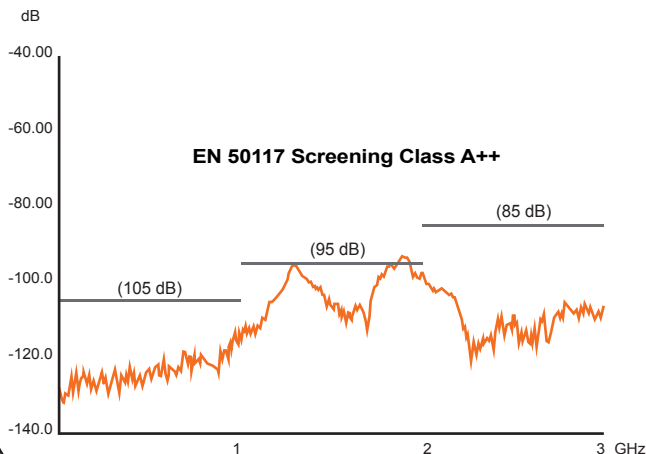


Use these Tools

Stripping Dimension:



Shielding Effectiveness:



Suitable for Cables:

RG6 quad, RG6, RG59, RG178, ... suitable for all cable with inner conductor from \varnothing 0,3 up to \varnothing 1,1 mm (from AWG 28 to AWG 18)

Electrical Specification

Impedance:	75 Ohm
Frequency:	0-1 GHz
Dielectric W/V:	500 Veff
Insulation res:	5000 M-Ohm
Screening Immunity:	Class A+
Insertion Loss:	0,5 dB @ 1GHz

Mechanical Specification

Body Material:	Brass - Nickel plated
Center Contact:	Brass - Gold plated
Shrapnel:	P. Bronze - Gold plated
Insulator:	Derlin
CaP®:	Protected Plastic Compound
Weight:	7.5 g

Environmental Specification

Operating Temp: - 40 ÷ + 120 °C

All measures are in millimeters