

LEDmaster – II

4 CHANNEL LED DMX CONTROLLER

USER MANUAL



CAUTION!

Keep this device a way from rain and moisture!
Unplug mains lead before opening the housing!

For your own safety, please read this user manual carefully before your initial start-up!

Every person involved with the installation, operation and maintenance of this device has to

- be qualified
- follow the instructions of this manual
- consider this manual to be part of the total product
- keep this manual for the entire service life of the product
- pass this manual on to every further owner or user of the product
- include every supplementary update with the original manual

Before your initial start-up, please make sure that there is no damage caused during shipment. Should there be any, do not use the device and consult your supplier.

SAFETY INSTRUCTIONS

This device has left our premises in absolutely perfect condition. In order to maintain this condition and to ensure a safe operation, it is absolutely necessary for the user to follow the safety instructions and warning notes written in this user manual.



Important: Damages caused by the disregard of this user manual are not subject to warranty. The dealer will not accept liability for any resulting defects or problems.

Always plug in the power unit last.

Keep away from heaters and other heating sources!

Keep away children and amateurs from the device! Never leave the device running unattended!

If the device has been exposed to drastic temperature fluctuation (e. g. after transportation), do not switch it on immediately. The arising condensation water might damage your device. Leave the device switched off until it has reached room temperature.

This device falls under protection-class III. It always has to be operated with an appropriate transformer. Check the device, the power cord and transformer from time to time. Make sure that the transformer is the correct type as that stated on the rear panel.

Always disconnect from the mains, when the device is not in use or before cleaning it.

There are no serviceable parts inside the device. Maintenance and service operations are only to be carried out by authorized dealers.

Please note that damages caused by manual modifications on the device or unauthorized operation by unqualified persons are not subject to warranty.

OPERATING DETERMINATIONS

This device is a DMX-controller for controlling DMX-effects or spots in discotheques, on stages etc. It is allowed to be operated with a direct voltage of DC 9-12 V, minimum 300 mA and was designed for indoor use only.

Do not shake the device. Avoid brute force when installing or operating.

When choosing the installation-spot, please make sure that the device is not exposed to extreme heat, moisture or dust. There should not be any cables lying around. You endanger your own and the safety of others!

Operate the device only after having familiarized with its functions. Do not permit operation by persons not qualified for operating the device. Most damages are the result of unprofessional operation!

Please use the original packaging if the device is to be transported.

Please consider that unauthorized modifications on the device are forbidden due to safety reasons!

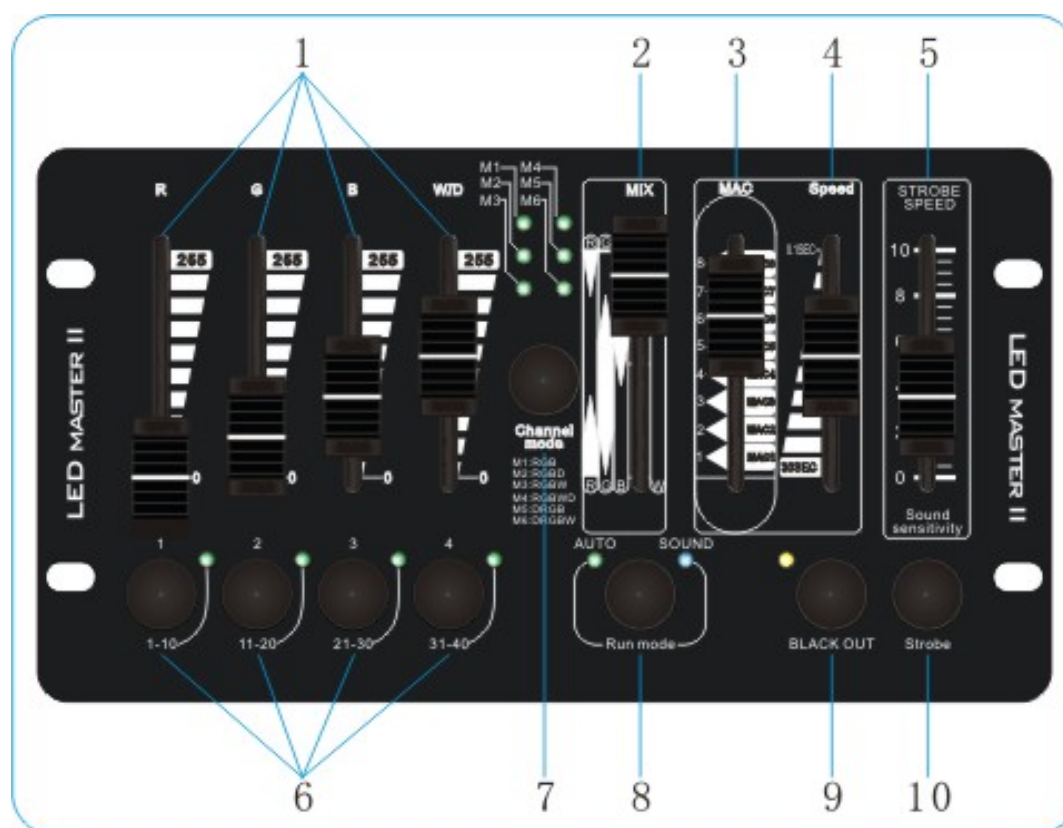
If this device will be operated in any way different to the one described in this manual, it may suffer damages and the guarantee becomes void. Furthermore, any other operation may lead to dangers like short-circuit, burns, electric shock, etc.

MAIN FEATURES

Innovative LED DMX controller to match with majority & difference brand LEDlight in the market:

- Standard DMX 512 Controller
- 40 Channels
- 4 Faders
- Control RGB, RGBW, RGBWM, DRGB, DRGBW Channel definition
- 1 color mixing fader / 8 built-in program with speed adjustable
- Independent Strobe function 1-20HZ
- Sensitivity Adjustable -100%

FRONT PANEL Please note mark word mean a button, ex: Strobe**



1. R, G, B, W/D Fader
2. MIX fader : To control the built in mixing effect
3. MAX fader : To Control the built in program
4. Speed fader : To control the speed of the built in programs
5. To match by pressing **Strobe** button, this fader become “STROBE SPEED” controller 1-20HZ. If under sound controlled function, this fader become “ sound sensitivity” adjusting from 1-100%.
6. 4 buttons to define difference group of light, max 32pcs LED per address. 1 for DMX address 1-10, 2 for 11-20, 3 for 21-30 and 4 for 31-40.

7. Channel Mode :

There are 6 modes as listed below :

M1 : RGB

M2 : RGBD

M3 : RGBW

M4 : RGNWD

M5 : DRGB

M6 : DRGBW

***** Note: Dimming value will be fix 255 when under M4 and M6 mode.**

8. Run Mode :

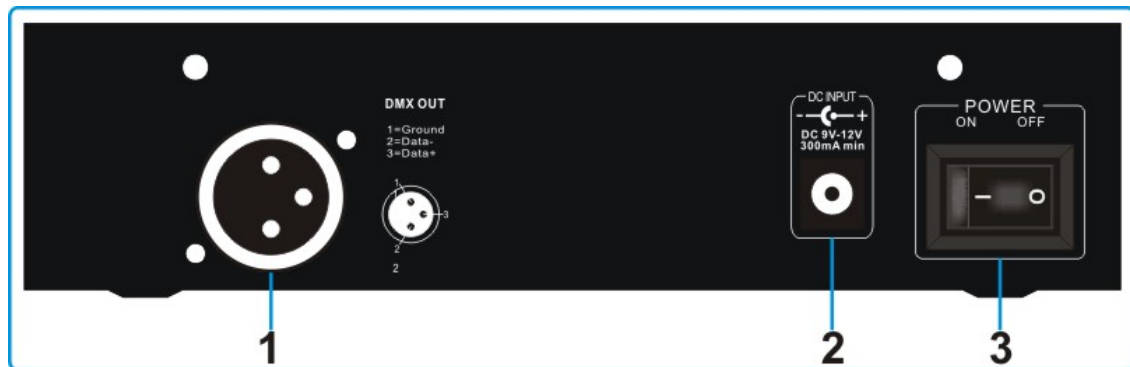
There are two fix run mode – Auto and Sound activated

9. BLACK OUT :

10. Strobe :

Press **Strobe** for strobe effect. Release button then back from Strobe.

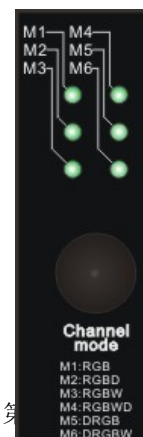
REAR PANEL



1. DMX 512 Signal output (1 = ground; 2=positive 3= Negative)
2. Power Input (DC9V-12V / Min 300mA)
3. Power Rocker Switch

Operation

- i. Before operation, please select the mode by pressing the **Channel mode**



ii. Select Difference Address group light to control

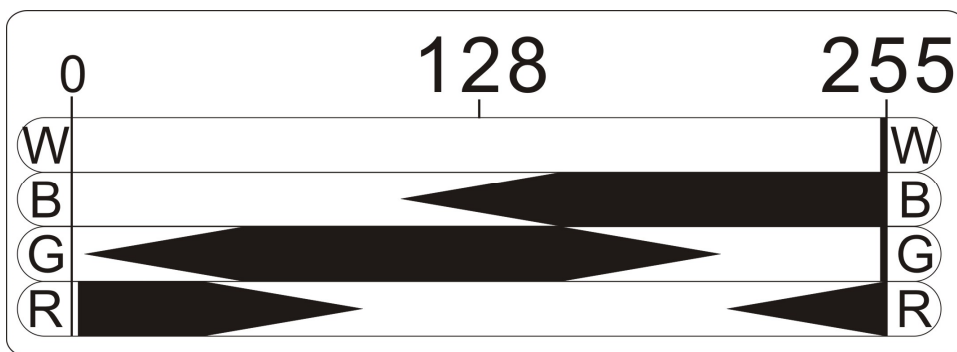


iii. Manual Output

You can also can manual control by pushing R, G, B W/D fader (if the led light is RGB version, then the WD is no function) to adjust the effect you want.

iv. Color Mixing Output

When pushing MIX fader, the color mixing effect as below



v. Built in program output

Program	Channel Value	Effect
Mac1	8-38	Red-Green Color fading
Mac2	39-69	Red-Blue Color Fading
Mac3	70-100	Green-Blue Color Fading
Mac4	101-131	Red-Green-Blue Color Fading
Mac5	132-162	Red-Green Chasing
Mac6	163-193	Red-Blue Chasing
Mac7	194-224	Green-Blue Color Chasing
Mac8	225-25	Red-Green-Blue Color Chasing

*** If click Run Mode then can match either with “Auto” or “Sound” effect

*** Under Auto mode, then you can use Speed button to adjust speed

*** Under Sound mode, then you can use Sound Sensitivity button to adjust sensitivity.

vi. Strobe Output

1. Press Strobe button to get into Strobe Status. When release Button then back to normal status.
2. Pushing the Strobe Speed to adjust the speed 1-20HZ



LED MASTER II

LED MASTER II

R

G

B

W/D

MIX

MAC

Speed

STROBE SPEED

255

255

255

255

RG

8

0.1SEC

10

8

6

4

2

0

Sound sensitivity

Channel mode

- M1:RGB
- M2:RGBD
- M3:RGBW
- M4:RGBWD
- M5:DRGB
- M6:DRGBW

AUTO

SOUND

30SEC

1

2

3

4

1-10

11-20

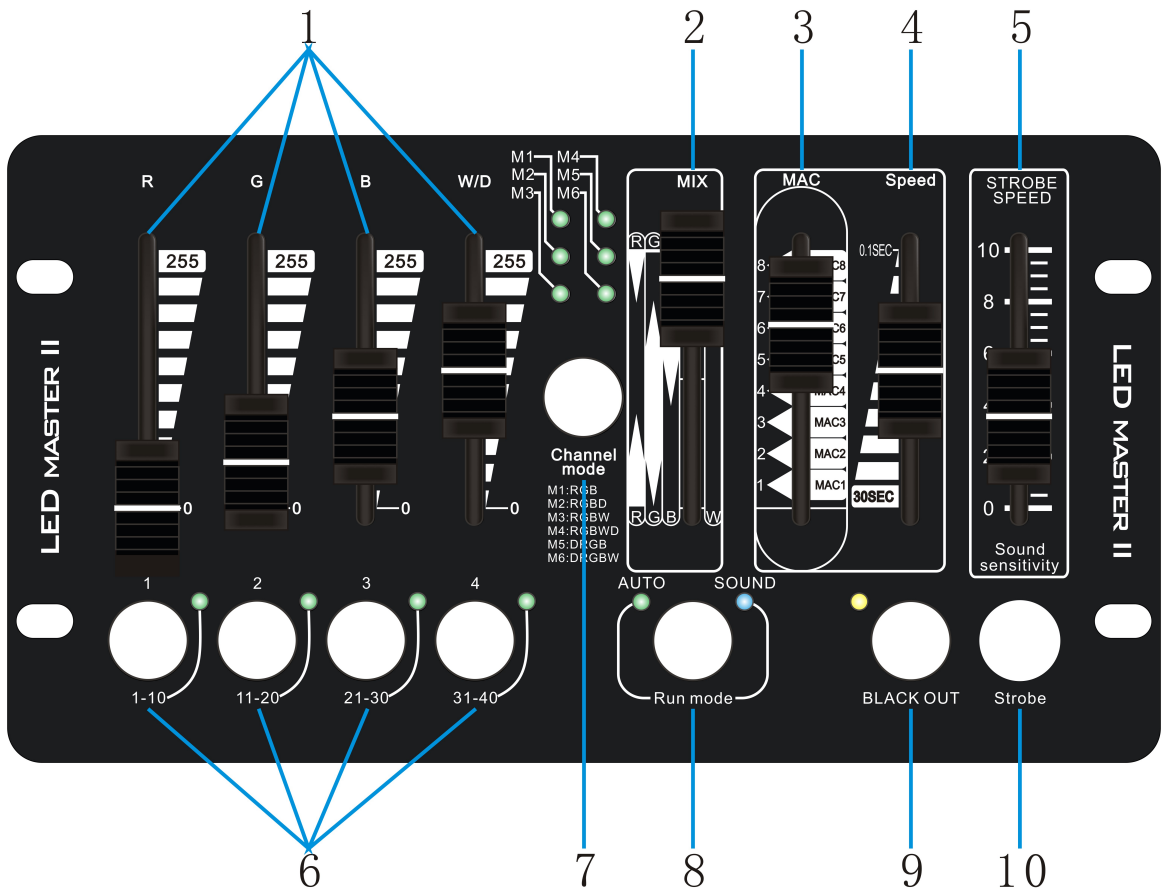
21-30

31-40

Run mode

BLACK OUT

Strobe

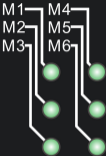




1

2

3



Channel mode

- M1:RGB
- M2:RGBD
- M3:RGBW
- M4:RGBWD
- M5:DRGB
- M6:DRGBW

1



2



3



4



STROBE
SPEED



Sound
sensitivity

MIX

R

G

B

W

255



128

R

G

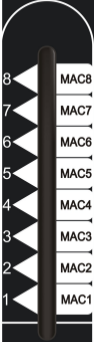
B

W

0

MAC

Speed



AUTO

SOUND



Run mode