



## Single Output Industrial Power Supplies

Features	Benefits
• Limited Lifetime Warranty	• Lower Cost of Ownership
• High Efficiency (up to 91%)	• Easier System Cooling
• Wide Range AC Input	• Supports Global Use



Specification		HWS15A/A	HWS30A/A	HWS50A/A	HWS100A/A	HWS150A/A
Input Voltage Range	-	85 - 265VAC (47 - 63Hz) Withstands 300VAC for 5s or 120 - 370VDC*				
Input Current (Typ) (1)	A	0.35 / 0.2	0.65 / 0.4	0.65 / 0.35	1.3 / 0.65	1.9 / 0.95
Inrush Current (1)	A	14 / 28				
Power Factor	-	Meets EN61000-3-2				
		-	-	0.97/0.91	0.98/0.93	0.98/0.93
Temperature Coefficient	%/°C	<0.02%/°C				
Overcurrent Protection	%	>105%				
Overvoltage Protection	V	Yes (see table)				
Hold Up Time (Typ)	ms	20				
Leakage Current (max)	mA	<0.5mA (Typ 0.2mA at 100VAC, 0.4mA at 230VAC)				
Remote Sense	-	No			Yes	
Indicator	-	Green LED = ON				
Operating Temperature (with cover)	°C	-10°C to +70°C, derate from 50°C to 70°C (2)				
Storage Temperature	°C	-30 to +85°C				
Humidity (non condensing)	%RH	Operating: 30 - 90%RH, Non operating 10 - 95%RH				
Cooling	-	Convection				
Withstand Voltage	VAC	Input to Ground 2kVAC, Input to Output 3kVAC, Output to Ground 500VAC for 1 min.				
Isolation Resistance	MΩ	>100M at 25°C & 70%RH, Output to Ground 500VDC				
Vibration (non operating)	-	10 - 55Hz (1 minute sweep), 19.6m/s <sup>2</sup> constant X, Y, Z 1 hour				
Shock	m/s <sup>2</sup>	< 196.1 m/s <sup>2</sup>				
Safety Agency Approvals	-	UL60950-1, CSA60950-1, EN60950-1, EN50178, UL508, CE Mark				
Line Dip	-	Complies with SEMI F47 (200VAC line only)				
Conducted & Radiated EMI	-	EN55011 / EN55022-B, FCC-B, VCCI-B				
Immunity	-	IEC61000-4-2, -3, -4, -5, -6, -8, -11; IEC61000-6-2				
Weight (Typ)	g	190	240	300	470	520
Size (HxWxD) (with cover)	mm	31.5 x 82 x 80	31.5 x 82 x 95	31.5 x 82 x 120	33 x 82 x 160	42 x 82 x 160
MTBF (3)	hours	12,116,851	8,169,868	3,726,622	2,963,512	2,676,081
Warranty	-	Limited Lifetime Warranty (See TDK-Lambda's terms and conditions)				

### Notes:

\* Safety certified for AC input only

(1) 100/200VAC.

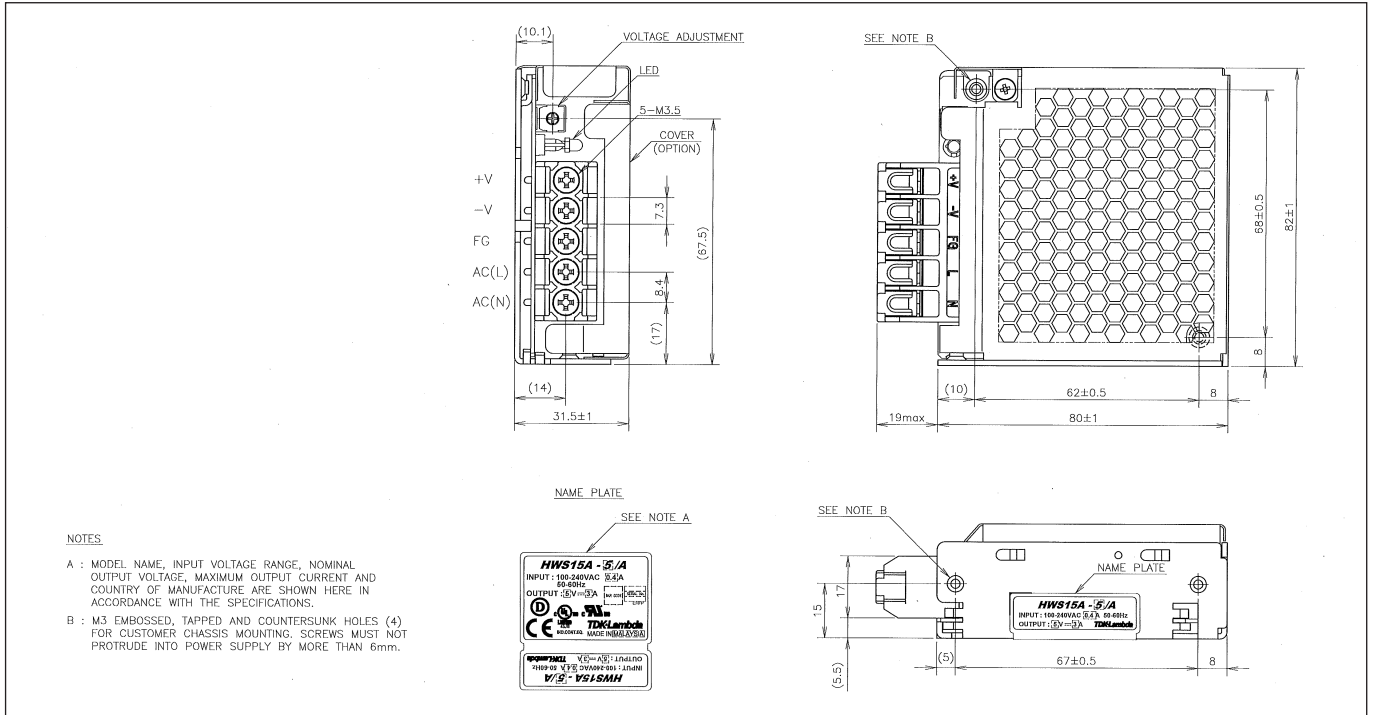
(2) Derating varies with model. Please refer to individual model specification for derating graphs.

(3) According to Telcordia document SR-332, issue 3, "Reliability Prediction Procedure for Electronic Equipment"  
Conditions: ambient temp. 25deg C, 230Vac input, full load (figures shown for 24V models)

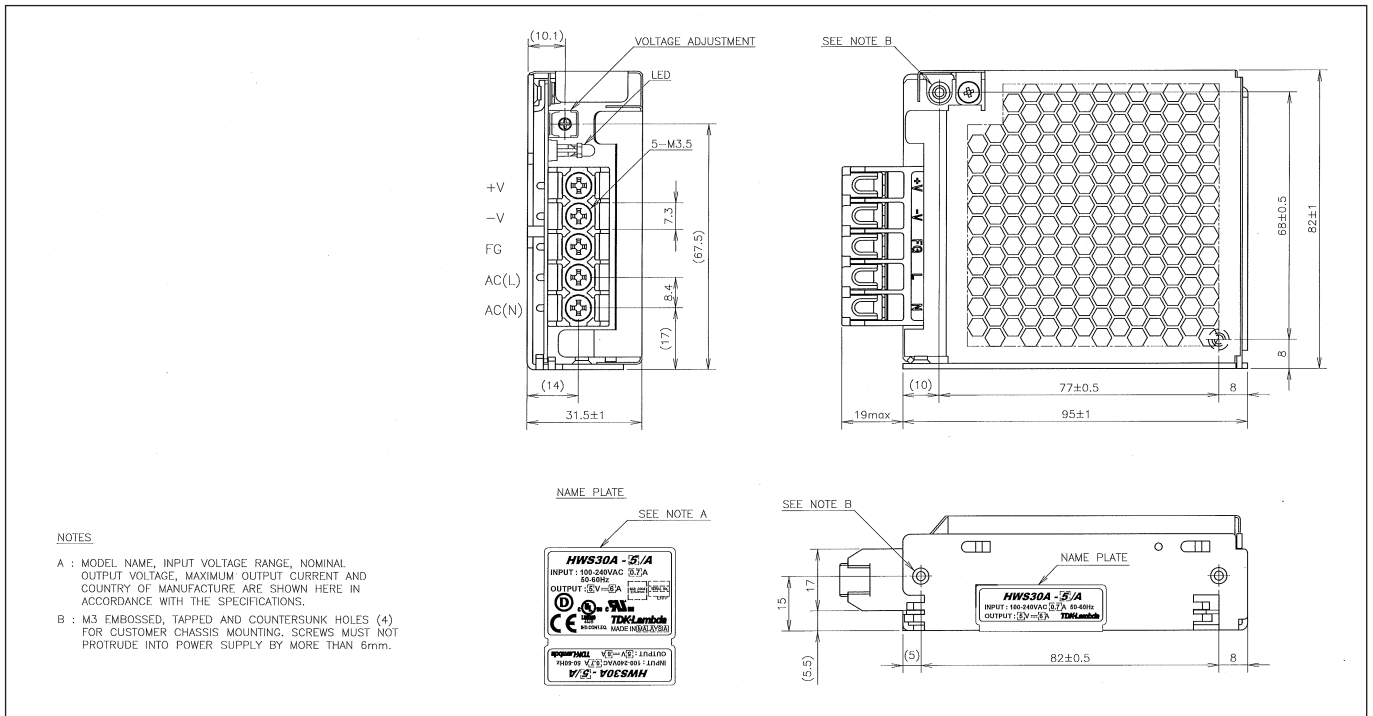
Model Selector								
Model	Voltage (V)	Adjust Range (V)	Max Current (A)	Load Reg (mV)	Line Reg (mV)	Ripple Noise (mV)	Over Voltage (V)	Efficiency (typ) %
HWS15A-3/A	3.3V	2.97 - 3.96	3	40	20	120	4.13-4.95	70/71
HWS30A-3/A	3.3V	2.97 - 3.96	6	40	20	120	4.13-4.95	75/77
HWS50A-3/A	3.3V	2.97 - 3.96	10	40	20	120	4.13-4.95	76/78
HWS100A-3/A	3.3V	2.97 - 3.96	20	40	20	120	4.13-4.95	82/84
HWS150A-3/A	3.3V	2.97 - 3.96	30	40	20	120	4.13-4.95	82/84
HWS15A-5/A	5V	4.0 - 6.0	3	40	20	120	6.25-7.25	77/79
HWS30A-5/A	5V	4.0 - 6.0	6	40	20	120	6.25-7.25	80/82
HWS50A-5/A	5V	4.0 - 6.0	10	40	20	120	6.25-7.25	82/84
HWS100A-5/A	5V	4.0 - 6.0	20	40	20	120	6.25-7.25	84/86
HWS150A-5/A	5V	4.0 - 6.0	30	40	20	120	6.25-7.25	85/87
HWS15A-12/A	12V	9.6 - 14.4	1.3	96	48	150	15-17.4	80/83
HWS30A-12/A	12V	9.6 - 14.4	2.5	96	48	150	15-17.4	84/86
HWS50A-12/A	12V	9.6 - 14.4	4.3	96	48	150	15-17.4	83/85
HWS100A-12/A	12V	9.6 - 14.4	8.5	96	48	150	15-17.4	86/88
HWS150A-12/A	12V	9.6 - 14.4	13	96	48	150	15-17.4	85/88
HWS15A-15/A	15V	12.0 - 18.0	1	120	60	150	18.8-21.8	81/84
HWS30A-15/A	15V	12.0 - 18.0	2	120	60	150	18.8-21.8	85/87
HWS50A-15/A	15V	12.0 - 18.0	3.5	120	60	150	18.8-21.8	83/86
HWS100A-15/A	15V	12.0 - 18.0	7	120	60	150	18.8-21.8	86/88
HWS150A-15/A	15V	12.0 - 18.0	10	120	60	150	18.8-21.8	86/89
HWS15A-24/A	24V	19.2 - 28.8	0.65	150	96	150	30-34.8	82/85
HWS30A-24/A	24V	19.2 - 28.8	1.3	150	96	150	30-34.8	86/88
HWS50A-24/A	24V	19.2 - 28.8	2.2	150	96	150	30-34.8	84/87
HWS100A-24/A	24V	19.2 - 28.8	4.5	150	96	150	30-34.8	87/89
HWS150A-24/A	24V	19.2 - 28.8	6.5	150	96	150	30-34.8	88/90
HWS15A-48/A	48V	38.4 - 52.8	0.33	240	192	200	55.2-64.8	80/80
HWS30A-48/A	48V	38.4 - 52.8	0.65	240	192	200	55.2-64.8	82/83
HWS50A-48/A	48V	38.4 - 52.8	1.1	240	192	200	55.2-64.8	84/86
HWS100A-48/A	48V	38.4 - 52.8	2.1	240	192	200	55.2-64.8	88/90
HWS150A-48/A	48V	38.4 - 52.8	3.3	240	192	200	55.2-64.8	89/91

Options	
Suffix	Description
<b>Blank</b>	No Cover
<b>/ A</b>	Cover
<b>/ R</b>	Remote on/off (available 50W, 100W & 150W models)
<b>/ HD</b>	See HWS/HD datasheet for details. -40°C start up and PCB coating ( <b>not available on HWS15A</b> )
<b>/ ME</b>	See HWS/ME datasheet for details of available models IEC/EN60601-1 medical approval ( <b>not available on HWS15A</b> )

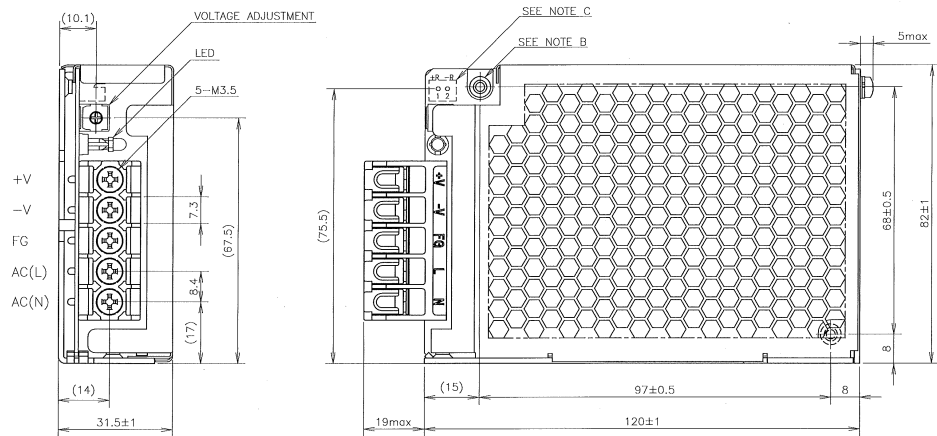
## HWS15A/A Outline Drawing



## HWS30A/A Outline Drawing



## HWS50A/A Outline Drawing



### NOTES

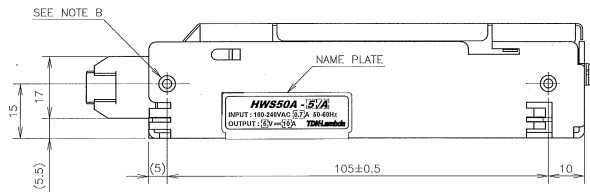
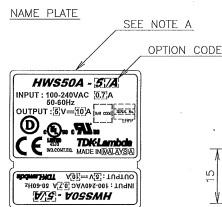
A : MODEL NAME, OPTION CODE, INPUT VOLTAGE RANGE, NOMINAL OUTPUT VOLTAGE, MAXIMUM OUTPUT CURRENT AND COUNTRY OF MANUFACTURE ARE SHOWN HERE IN ACCORDANCE WITH THE SPECIFICATIONS.

B : M3 EMBOSSED, TAPPED AND COUNTERSUNK HOLES (4) FOR CUSTOMER CHASSIS MOUNTING. SCREWS MUST NOT PROTRUDE INTO POWER SUPPLY BY MORE THAN 6mm.

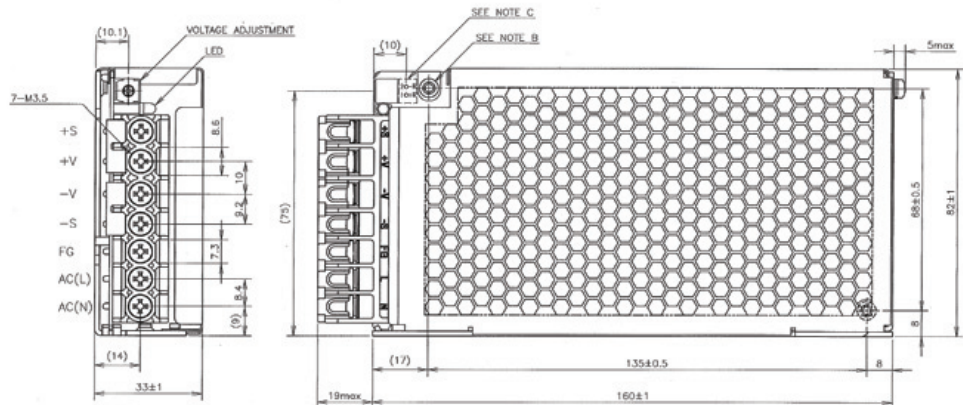
C : REMOTE ON/OFF CONTROL CONNECTOR --- OPTION B2B-XH-AM (JST)  
 MATCHING HOUSING : XHP-2 (JST)  
 MATCHING TERMINAL PIN : BXH-001T-P0.6 (JST) OR SXH-001T-P0.6 (JST)  
 HAND CRIMPING TOOL : YC-110R (JST) OR YRS-110 (JST)  
 MATCHING HOUSING AND TERMINAL PIN --- NOT INCLUDED WITH THE PRODUCT

### OPTIONAL MODELS

MODEL	COVER	REMOTE ON/OFF CONTROL
HWS50A-*/[A]	○	—
HWS50A-*/[RA]	○	○



## HWS100A/A Outline Drawing



### NOTES

A : MODEL NAME, OPTION CODE, INPUT VOLTAGE RANGE, NOMINAL OUTPUT VOLTAGE, MAXIMUM OUTPUT CURRENT AND COUNTRY OF MANUFACTURE ARE SHOWN HERE IN ACCORDANCE WITH THE SPECIFICATIONS.

B : M3 EMBOSSED, TAPPED AND COUNTERSUNK HOLES (4) FOR CUSTOMER CHASSIS MOUNTING. SCREWS MUST NOT PROTRUDE INTO POWER SUPPLY BY MORE THAN 6mm.

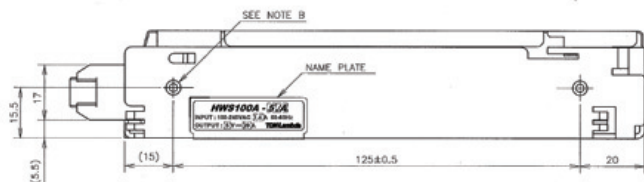
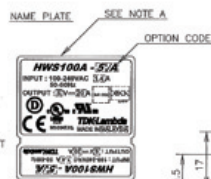
C : REMOTE ON/OFF CONTROL CONNECTOR --- OPTION B2B-XH-AM (JST)  
 MATCHING HOUSING : XHP-2 (JST)  
 MATCHING TERMINAL PIN : BXH-001T-P0.6 (JST) OR SXH-001T-P0.6 (JST)  
 HAND CRIMPING TOOL : YC-110R (JST) OR YRS-110 (JST)  
 MATCHING HOUSING AND TERMINAL PIN --- NOT INCLUDED WITH THE PRODUCT

### ACCESSORIES

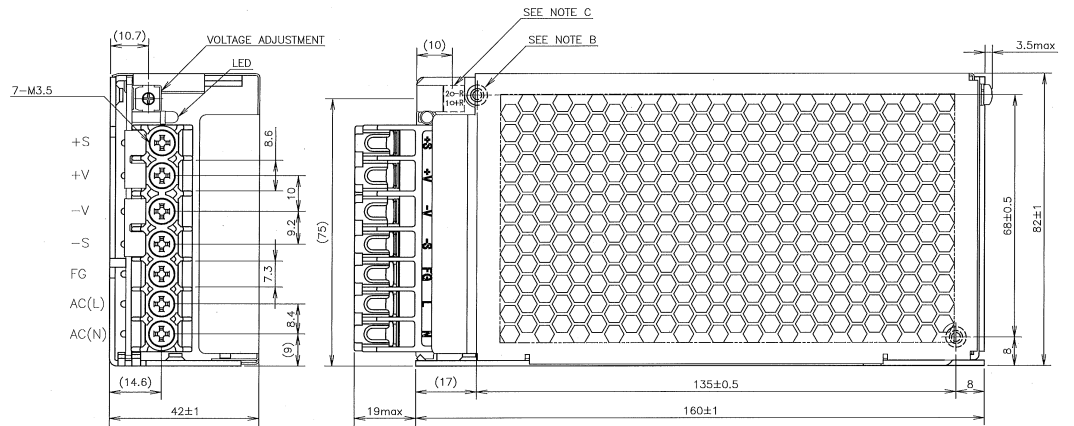
\* SHORT PEECE (NET 2) FOR SHORTING PURPOSE (+S→+V, -S→-V) : MOUNTED AT TIME OF SHIPMENT.

### OPTIONAL MODELS

MODEL	COVER	REMOTE ON/OFF CONTROL
HWS100A-*/[A]	○	—
HWS100A-*/[RA]	○	○



## HWS150A/A Outline Drawing



### NOTES

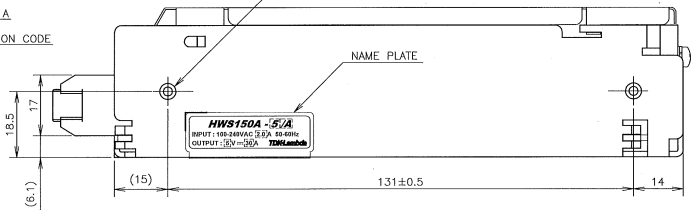
- A : MODEL NAME, OPTION CODE, INPUT VOLTAGE RANGE, NOMINAL OUTPUT VOLTAGE, MAXIMUM OUTPUT CURRENT AND COUNTRY OF MANUFACTURE ARE SHOWN HERE IN ACCORDANCE WITH THE SPECIFICATIONS.
- B : M3 EMBOSSED, TAPPED AND COUNTERSUNK HOLES (4) FOR CUSTOMER CHASSIS MOUNTING. SCREWS MUST NOT PROTRUDE INTO POWER SUPPLY BY MORE THAN 6mm.
- C : REMOTE ON/OFF CONTROL CONNECTOR --- OPTION B2B-XH-AM (JST)  
 MATCHING HOUSING : XHP-2 (JST)  
 MATCHING TERMINAL PIN : BXH-001T-P0.6 (JST) OR SXH-001T-P0.6 (JST)  
 HAND CRIMPING TOOL : YC-110R (JST) OR YRS-110 (JST)  
 MATCHING HOUSING AND TERMINAL PIN --- NOT INCLUDED WITH THE PRODUCT

NAME PLATE SEE NOTE A



OPTION CODE

SEE NOTE B



### ACCESSORIES

- \* SHORT PIECE (NET 2) FOR SHORTING PURPOSE (+S~+V, -S~-V) : MOUNTED AT TIME OF SHIPMENT.



## TDK-Lambda France SAS

ZAC des Delaches  
CS 41077  
9 rue Thuillere  
91978 Villebon Courtaboef  
France  
Tel: +33 1 60 12 71 65  
Fax: +33 1 60 12 71 66  
france@fr.tdk-lambda.com  
www.fr.tdk-lambda.com



## Italy Sales Office

Via dei Lavoratori 128/130  
20092 Cinisello Balsamo (MI)  
Italy  
Tel: +39 02 61 29 38 63  
Fax: +39 02 61 29 09 00  
info.italia@it.tdk-lambda.com  
www.it.tdk-lambda.com



## Netherlands

info@nl.tdk-lambda.com  
www.nl.tdk-lambda.com



## TDK-Lambda Germany GmbH

Karl-Bold-Strasse 40  
77855 Achern  
Germany  
Tel: +49 7841 666 0  
Fax: +49 7841 5000  
info.germany@de.tdk-lambda.com  
www.de.tdk-lambda.com



## Austria Sales Office

Aredstrasse 22  
2544 Leobersdorf  
Austria  
Tel: +43 2256 655 84  
Fax: +43 2256 645 12  
info.germany@de.tdk-lambda.com  
www.de.tdk-lambda.com



## Switzerland Sales Office

Bahnhofstrasse 50  
8305 Dietlikon  
Switzerland  
Tel: +41 44 850 53 53  
Fax: +41 44 850 53 50  
info@de.tdk-lambda.com  
www.de.tdk-lambda.com



## TDK-Lambda UK Ltd.

Kingsley Avenue  
Ilfracombe  
Devon EX34 8ES  
United Kingdom  
Tel: +44 (0) 12 71 85 66 66  
Fax: +44 (0) 12 71 86 48 94  
powersolutions@uk.tdk-lambda.com  
www.uk.tdk-lambda.com



## TDK-Lambda Ltd.

Kibbutz  
Givat Hashlosha 48800  
Israel  
Tel: +9 723 902 4333  
Fax: +9 723 902 4777  
info@tdk-lambda.co.il  
www.tdk-lambda.co.il



## C.I.S.

**Commercial Support:**  
Tel: +7 (495) 665 2627  
**Technical Support:**  
Tel: +7 (812) 658 0463  
info@tdk-lambda.ru  
www.tdk-lambda.ru

## Local Distribution

