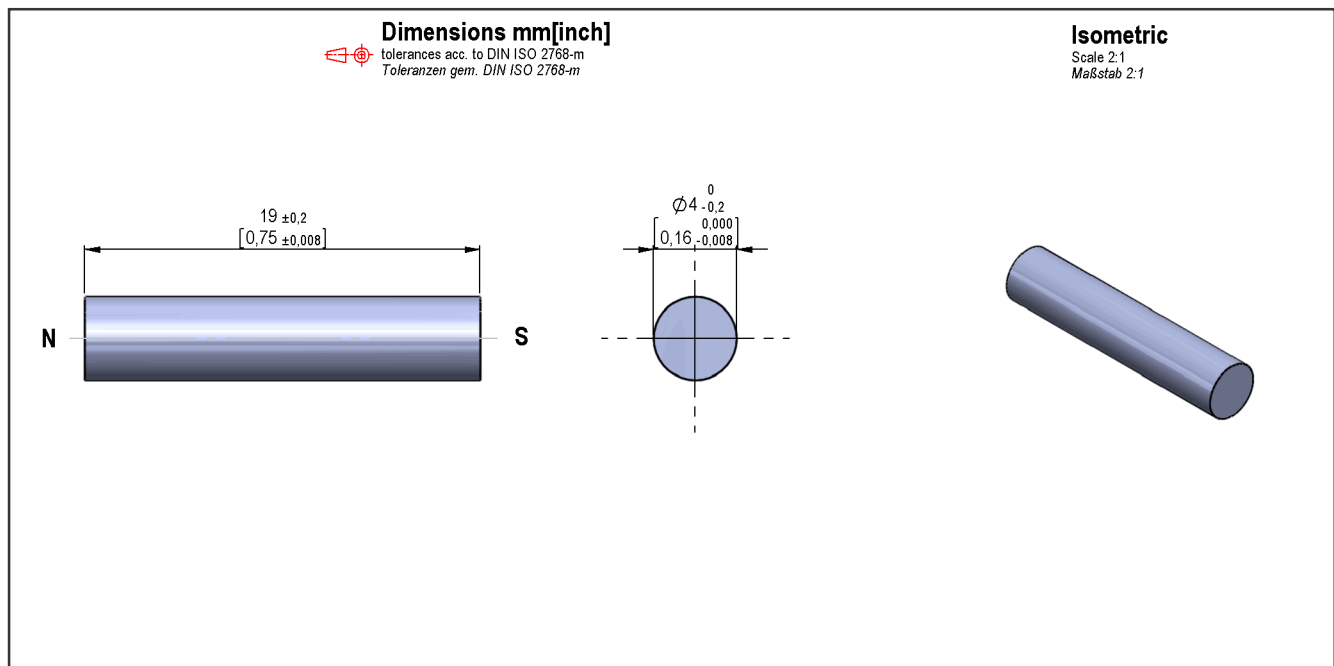


*Products for tomorrow...*



Mag. values DIN IEC 60404-8-	Conditions	Min	Typ	Max	Unit
Remanence Br		1.120	1.240		mT
Revers. temp. coeff. of Br			-0,02		%/K
Energy product (B x H) max.		35	39,8		kJ/cu m
Coercivity HcB		47	51,3		kA/m
Coercivity HcJ		48	51,7		kA/m
Density			7,4		g/cu cm
Max. operating temperature				450	°C
Magnetic moment	measured with MS150		22		E-6 Vs*cm
Magnet Material		Aluminium Nickel Cobalt			

General data	Conditions	Min	Typ	Max	Unit
Remarks		All details according to manufacturers information			
Remarks		ALNICO 500 code acc. to DIN 17410:35/5			