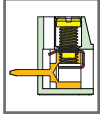


# MA524 PCB Terminal Block, Modular



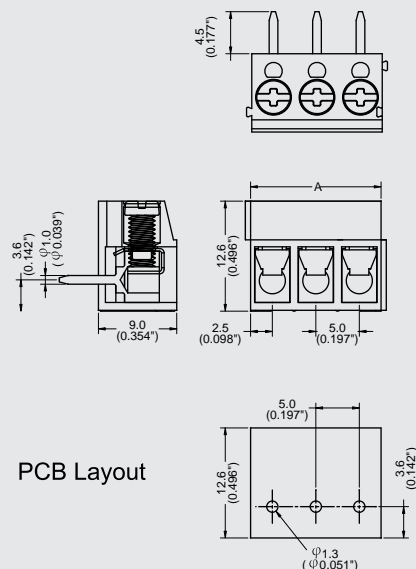
## DIMENSIONS/POSITIONS

## MA524-500M

間距	Pitch	5.00mm
位數	Poles	2 ~ 3Poles
尺寸a	Dimension a	5.00mm
長度 A	Length	A= 5.00xP(P≥2)
塑膠本體	Housing Material	PA 66
彈片	Spring	Brass, Stainless Steel
端子	Contact	Stainless Steel
螺紋	Screw Thread	M2.0, Steel, Zinc Plated
電線線徑	Wire Size	14~22AWG
PCB孔徑	PCB Hole Diameter	1.3mm
最大緊固扭矩	Tightening Torque, Max.	4.0 Lb-in
環境作業溫度	Operating Temperature	-40°C to +105°C

## TECHNICAL DATA

連接符合標準 Connection in acc. with standard EN-VDE		
額定電流 <sub>IN</sub>	Nominal Current <sub>IN</sub>	16A
額定橫截面	Nominal Cross Section	-
最大負載電流	Maximum load current	16A
絕緣材料	Insulating Material	PA
阻燃等級, 符合UL94 Inflammability class acc. to UL94		V0
額定電壓, UL/CUL Nominal voltage, UL/CUL		300V
額定電流, UL/CUL Nominal current, UL/CUL		16A



PCB Layout

Note:  
Screw Plating: Changes are available upon request