

Flachstecker schraubbar und schweisbar 6,3 mm Languettes vissable et soudable Tabs screwable and weldable

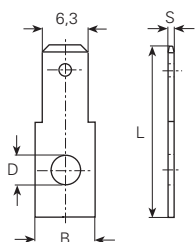
Masse im Steckbereich
DIN46342, Teil 1

Dimensions zone
d'emboîtement selon
DIN46342, partie 1

Dimensions in the tab sector
DIN46342, part 1

Werkstoff/Matière/Material
.2 = Bronze/bronze
.6 = Messing/laiton/brass
.8 = rostfreier Stahl/acier inox/stainless steel
.9 = Stahl/acier/steel

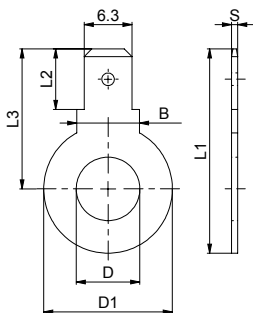
■ = Oberflächen/Surface/Surface-plating
Seite/page/page 5.011



* = ohne Bohrung / * = sans trou / * = without hole				
øD mm	B mm	L mm	S mm	Artikelnummer Numéro d'article Part-No.
*	8	19	0.8	3840.2 ■
	8	19	0.8	3840.80
	8	19	0.8	3840.9 ■
3.2	8	19	0.8	3846.6 ■
	8	23	0.8	3846c.6 ■
3.7	8	19	0.8	3849.6 ■
4.3	8	19	0.8	3854.6 ■
5.3	8	19	0.8	3859.6 ■
6.3	8	19	0.8	3864a.6 ■

Werkstoff/Matière/Material
.6 = Messing/laiton/brass

■ = Oberflächen/Surface/Surface-plating
Seite/page/page 5.011



øD mm	øD1 mm	B mm	L1 mm	L2 mm	L3 mm	S mm	Artikelnummer Numéro d'article Part-No.
5.3	12	8	23.8	8	17.8	0.8	3870m.6 ■
6.4	12	8	23.8	8	17.8	0.8	3870p.6 ■
8.4	12	8	23.8	8	17.8	0.8	3870q.6 ■
	17	8.3	27	8	18.5	0.8	3869n.6 ■
6.4	17	8	32	8	23.5	0.8	3870e.6 ■
8.4	17	8	32	8	23.5	0.8	3870f.6 ■
10.5	17	8	32	8	23.5	0.8	3870h.6 ■