

User's Manual

Transcend[®] Elite[™] Software











(Version 1.0)

Congratulations on purchasing one of Transcend's world-renowned storage products. Your Transcend storage device comes with Transcend Elite[™] – a very useful software application that can help you increase work productivity by keeping important files organized, protected and up-to-date. The Elite software pack includes Backup, Restore, Backup Management, Encryption and PC-Lock features.



Contents

Hardware Requirements.....	3
Supported Operating Systems.....	3
Getting Started	4
Backing up Data	5
 Create a Backup Task	5
 Run a Backup Task.....	9
 One Touch Backup	11
Restoring Data	12
 Restore Files from a Backup Task.....	12
Data Encryption.....	16
 Protecting Files & Folders	16
 Decrypting Your Data.....	17
Backup Management.....	18
Bookmark Sync	20
 Copy to Storage Device.....	20
 Copy to Computer	21
Settings	22
Closing the Program.....	24
Helpful Tips	25
FAQ.....	26
More Help.....	27

Hardware Requirements

1. Transcend StoreJet® Portable Hard Drive / JetFlash® USB Flash Drive / Portable Solid State Drive(SSD).
2. Desktop or Notebook computer with an available USB port

Supported Operating Systems

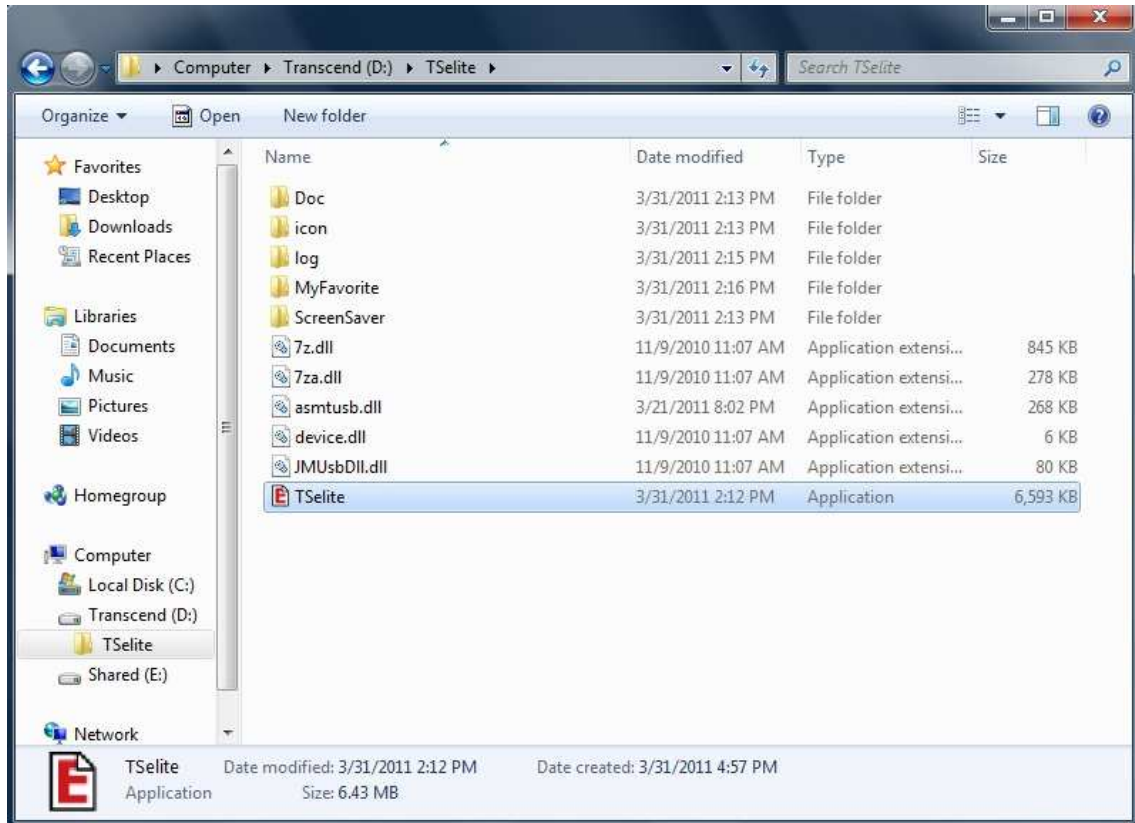
Elite supports the following operating systems:

- Windows® XP
- Windows Vista®
- Windows® 7

NOTE: You must have Administrator privileges to run Elite in Windows 7 and Vista.

Getting Started

You do not have to install any software on your computer to run Elite. You can start Elite manually by navigating to your StoreJet® Portable Hard Drive / JetFlash® drive / Portable Solid State Drive (SSD) in the Windows Explorer (“My Computer”) and double-clicking on “TSelite.exe” to begin.





Backing up Data

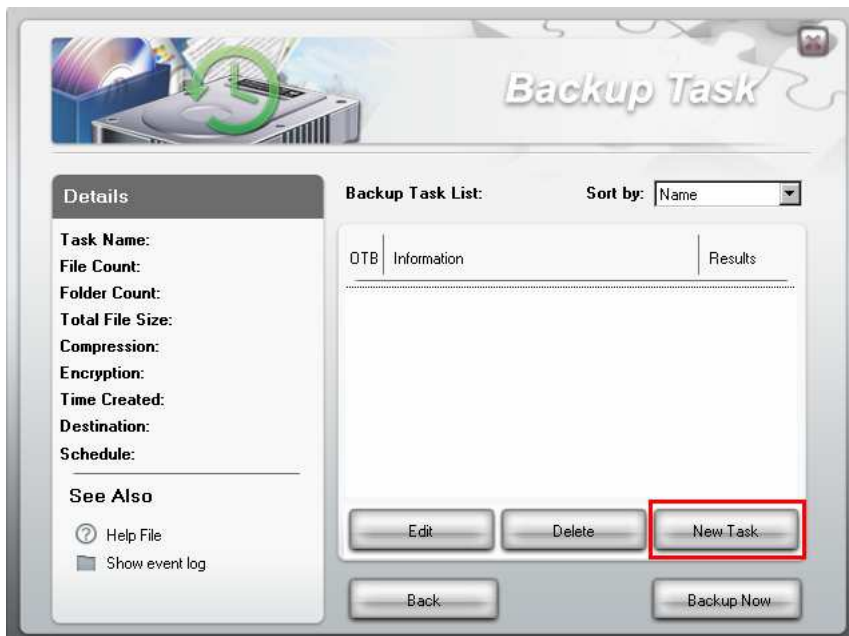


Create a Backup Task

1. Double-click the Elite icon () in the Windows System Tray
2. Select “**Backup**” from the Main Menu.



3. The Backup Task window will appear. Click the “**New Task**” button.



4. Enter a name for the Backup Task and a description of what the task does, then select additional backup options (if desired) and click “**Next**.”

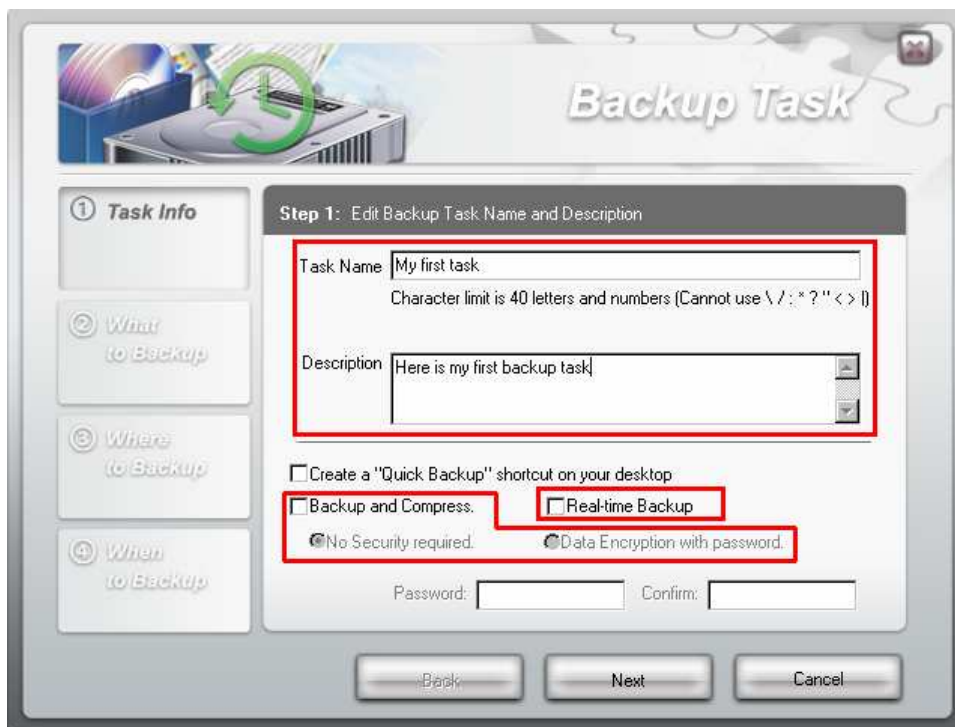
Example:

Task Name: “Photos”

Description: “Update the Windows Photos folder with the latest photos on my StoreJet”

Additional Options:

- **Backup and Compress** – Click this box to save space on the destination drive.
- **Data Encryption with Password** – Adds password security to your compressed files.
- **Real-time Backup** – This powerful function will continuously monitor the folder(s) you specify in the Backup Task, and incrementally backup the contents of the folder(s) whenever changes are made. For example, if you save a new file to the folder specified in this Backup Task, Elite will automatically add the new file to its ongoing backup of the folder. Similarly, any existing files in that folder that you re-save or modify in any way will also be automatically updated within the backup (date and time of update will be indicated at the end of each file name). **NOTE: Real-time backup starts functioning immediately after you finish creating the backup task; “Backup Now” and “One Touch backup” are not necessary while Real-time Backup is enabled.**



WARNING: If you use Encryption, the Password you enter will be required to decrypt and decompress your backed up files. *Do not forget your password.*

5. Select the files you want to backup. Use the column on the left to browse for folders, and select specific files in the window on the right. Check-marking a folder in the left hand column will automatically mark all of the files and subfolders contained within that folder. Click the **“Next”** button to continue.

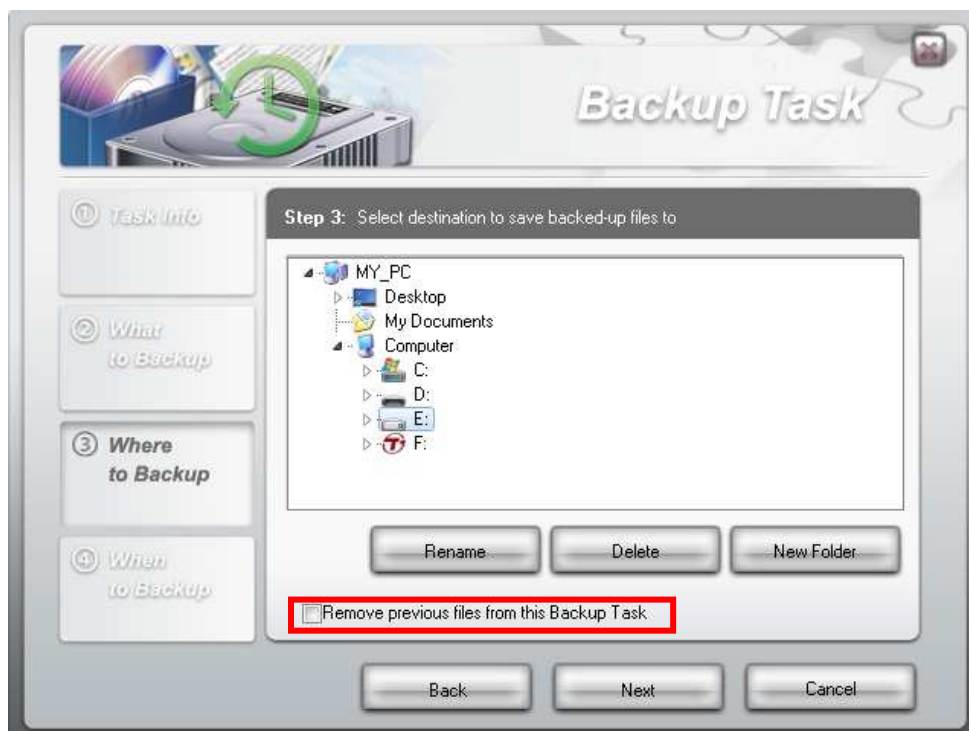


6. Select a destination folder for your backed-up files and click “Next.”

Remove previous files from this Backup Task:

To save space on your destination disk, you can choose to remove/overwrite the previous backups of your files each time you run the Backup Task.

NOTE: If you choose “Remove previous files from this Backup Task” you will only be able to restore files from the *most recent* backup. Older backup points will be unavailable.



7. In this step, you are given the option to set a reoccurring schedule for your Backup Task, which is useful to make sure your data is always synchronized and up-to-date. Choose one of the available backup frequency options and click “Done.”

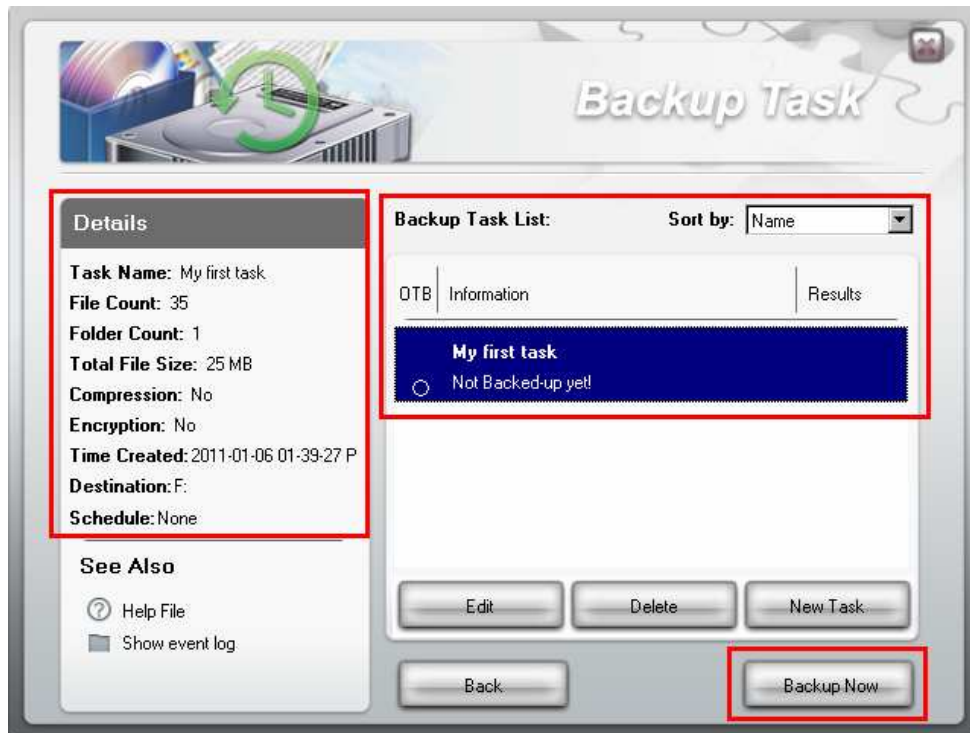
Backup Scheduling Options:

- **None (default)** – Choose this option if performing a one-time backup or if you want to perform updates manually.
- **Daily**– Execute the Backup Task once each day at a specific time. Click the up/down arrow buttons to adjust the start time.
- **Weekly** – Execute the Backup Task once every week. Select the time and the day (or days) of the week on which you want to backup your data.
- **Monthly** – Execute the Backup Task once per month at the same time of day on a specific day(s).



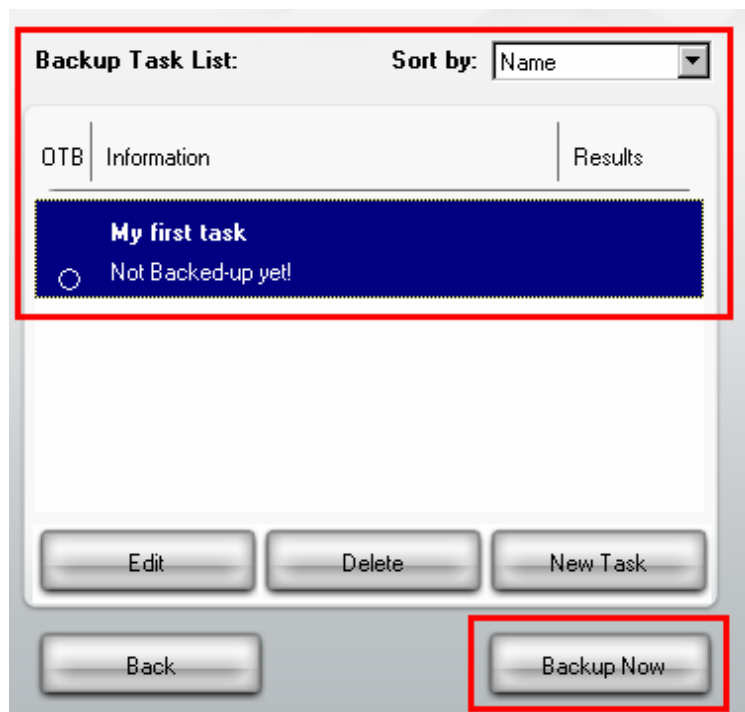
NOTE: The Elite application must be running in order for automatic backup scheduling to work. Scheduled backups cannot be performed unless the StoreJet, JetFlash, and any other hard drives relevant to the files selected in the Backup Task are connected to your computer and powered on.

8. Congratulations, you have successfully created a Backup Task! All Backup Tasks that you create will appear on the right-hand column of the Backup Task window, and details about each Task will appear on the left.

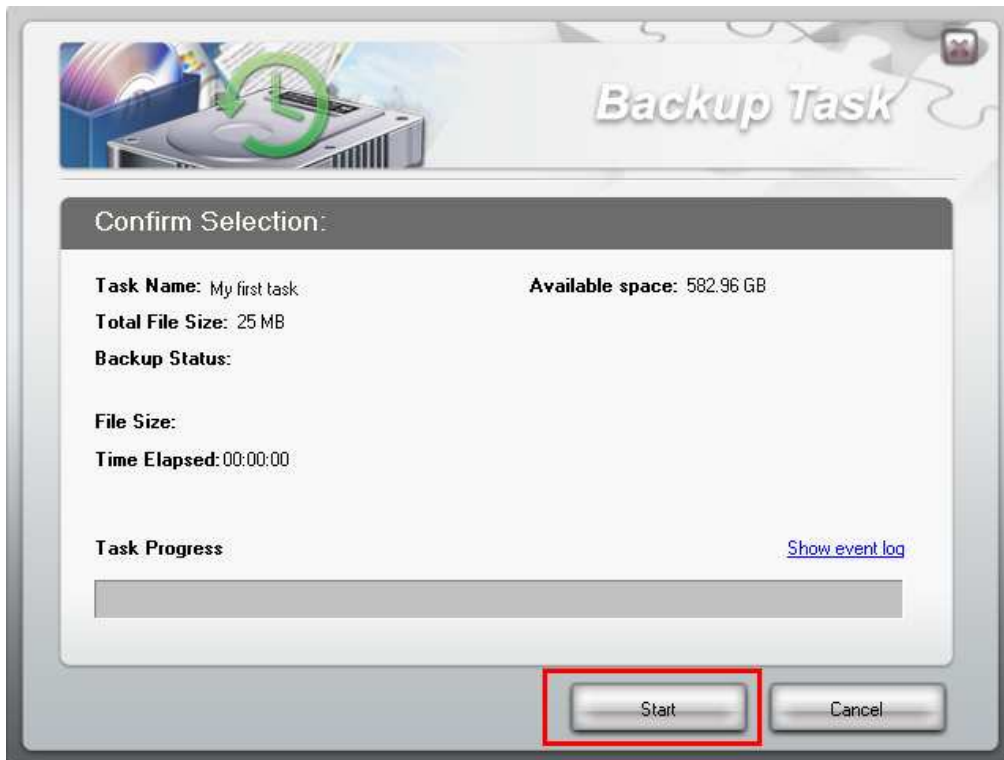


Run a Backup Task

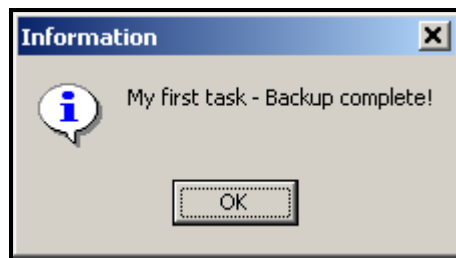
1. To manually execute a Backup Task (regardless of schedule settings), simply select it from the list of tasks in the Backup Task window and click “**Backup Now.**”



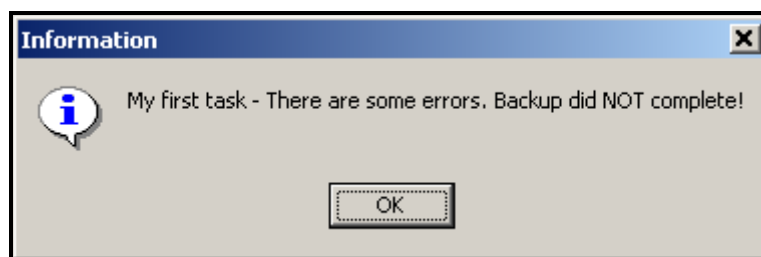
2. A summary of the Backup Task will appear. Click the “**Start**” button to begin the backup.

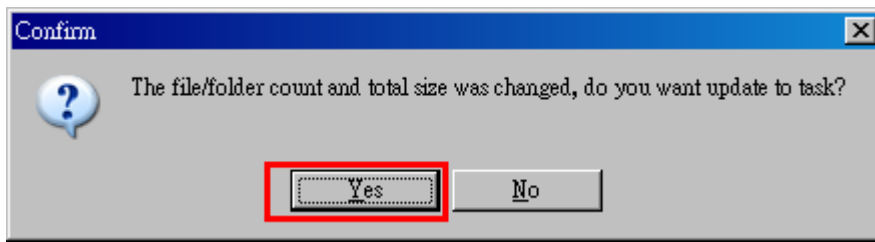


3. When the backup process has finished, a “Backup Complete” message window will appear. Click the **OK** button to exit.



4. If a problem occurs during the backup procedure, an error message window will appear. This is usually because source drives, folders, or files have been moved, renamed, or deleted from their original location at the time that the Backup Task was initially set up. Click the “OK” button to continue. Since the backup did not complete as planned, you will be given the opportunity to automatically update the task details to only include the files and folders that were successfully found. If you suspect the backup error occurred because of a disconnected disk or similar problem, it is best to select “No,” then try to fix the problem and re-run the Backup Task.

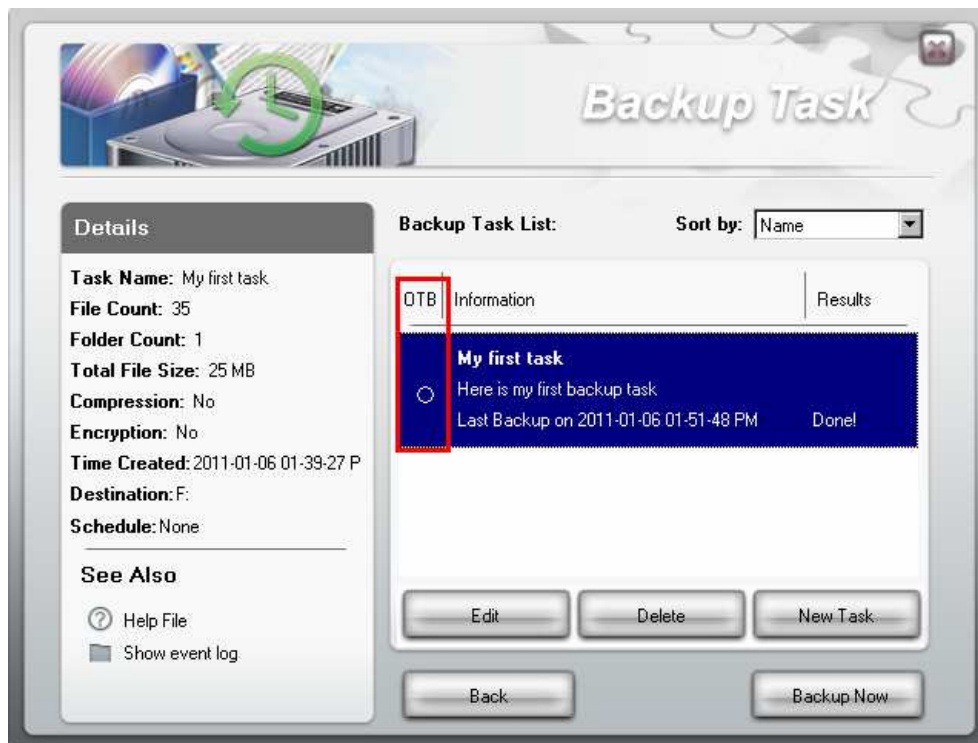




One Touch Backup

Some Transcend StoreJet models include a One Touch auto-backup button. This button can be used to automatically execute a Backup Task that you created in Elite.

1. In the Backup Task window, a list of your current backup tasks will be displayed on the right hand side of the screen.
2. To assign a Backup Task to your StoreJet's One Touch auto-backup button, simply mark the radio button in the "OTB" column.



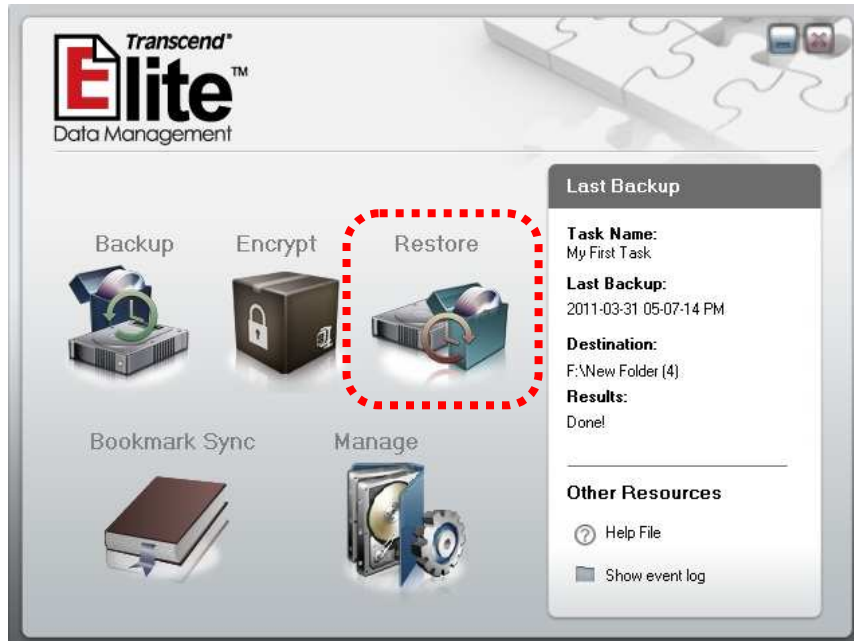
3. The next time you want to perform a backup, simply click the One Touch backup button on your StoreJet drive and your Backup Task will automatically start.

NOTE: The Elite application must be running in order to enable the One Touch auto-backup function of your drive.

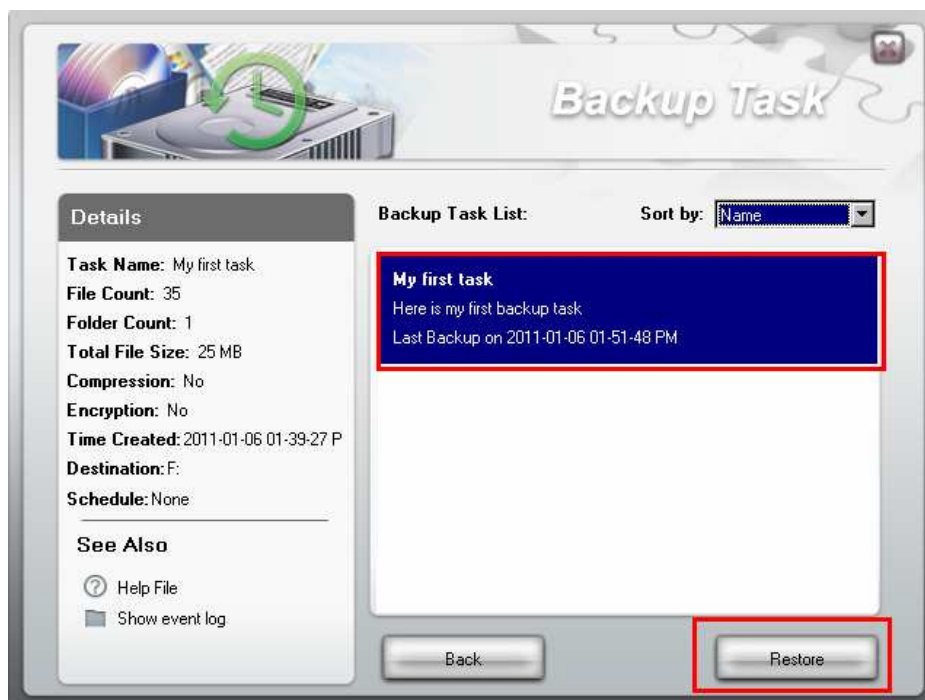
Restoring Data

Restore Files from a Backup Task

1. Double-click the Elite icon () in the Windows System Tray
2. Select “Restore” from the Main Menu.

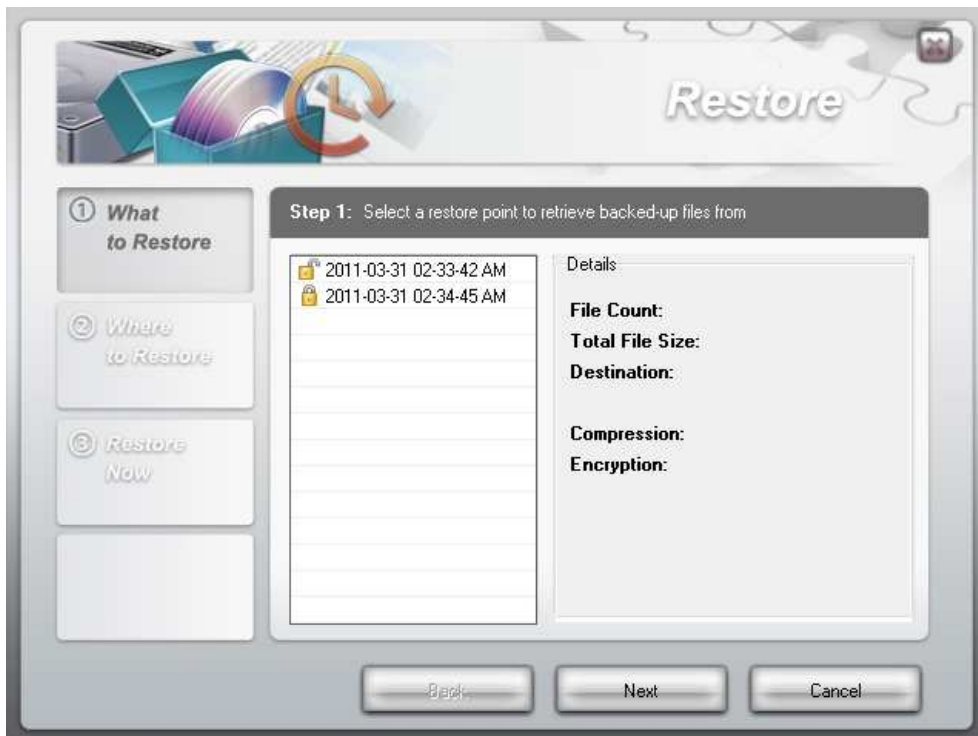


3. The Backup Task window will appear, and a list of all the backup tasks that have been executed will be displayed on the right hand side of the screen. Select a Backup Task and click the “Restore” button.



4. The next window will display a list of available backup instances that you can

restore from. Choose a version (usually the latest available instance) and click “**Next**” to continue.

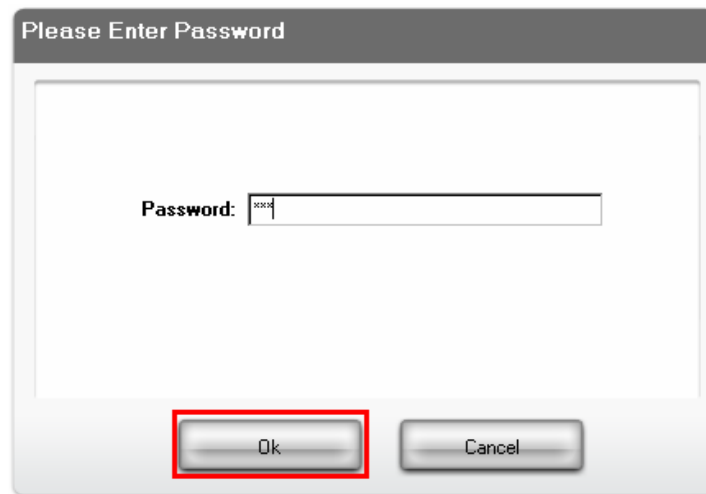


NOTE: If you selected “Remove previous files from this Backup Task” when creating the Backup Task, you will only be able to restore from the most recent backup.

5. If your backup is encrypted, a password will be required before you can restore data from it. A lock icon next to the backup date indicates encryption was used during backup, and a unlock icon means the backup is not encrypted.



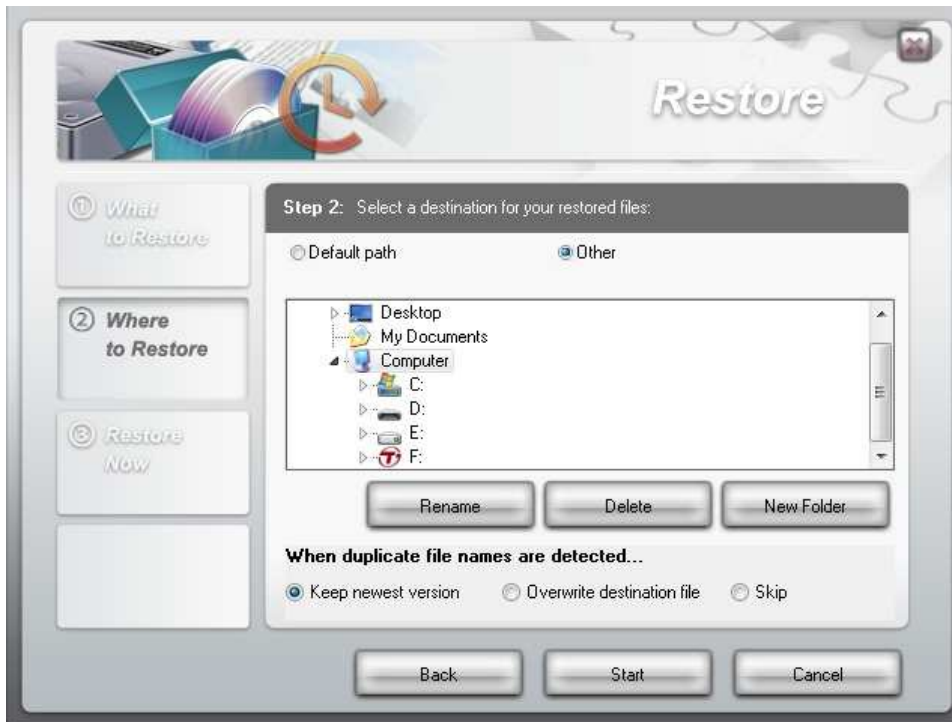
For encrypted backups, simply enter your password you used during the creation of the Backup Task and click the “**OK**” button.



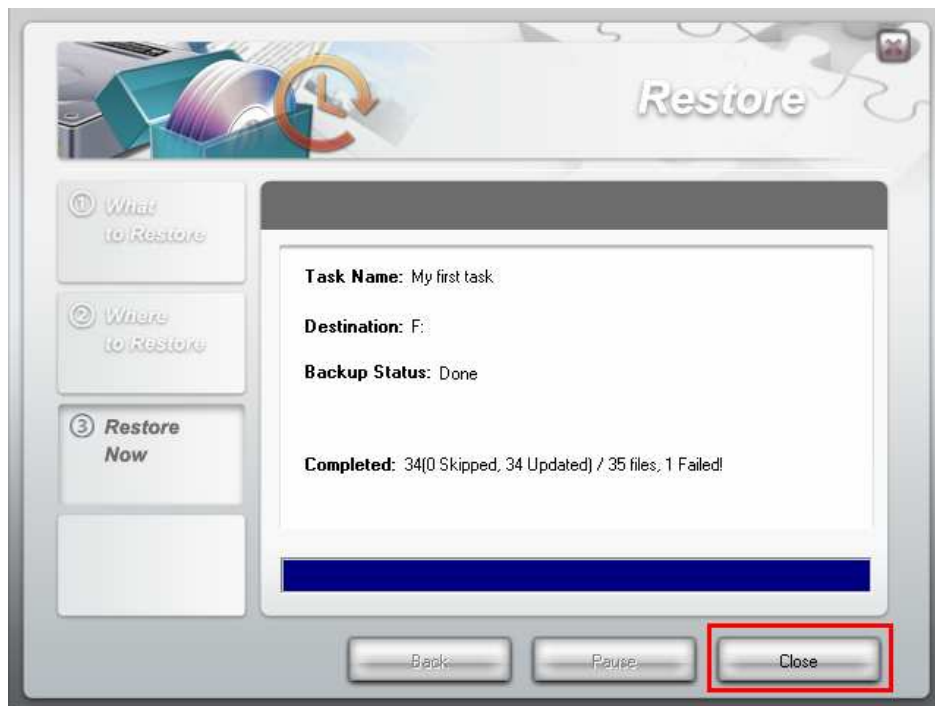
6. Next you will be asked to select a destination for your restored files. The “**Default path**” is the original folder location from which the file(s) were backed-up. Choose “**Other**” if you want to specify a different location to save your backups to. If you are restoring to the default path, most of the files you are restoring might have the same filenames as existing files within the folder(s). Elite gives you several options to handle duplicate files when they are detected. Choose one of the options below and click “**Start**” to begin restoring files.

Duplicate Filename Detection Options:

- **Keep newest version** – If duplicate file names are detected during the restore process, Elite will keep whichever version is newer (recommended).
- **Overwrite destination file** – Elite will overwrite all similarly named files in the destination with the ones from the backup, even if the files in the destination folder(s) have been recently modified.
- **Skip** – When duplicate files are detected, they will be skipped. All files in the destination folder(s) will remain untouched, and Elite will only restore files that don't already exist in the destination path.



7. Once the restore process is complete, a summary of the restored Task will appear. Click the “**Close**” button to exit.





Data Encryption

If you are concerned about data security, Elite offers you a quick and easy way to protect files with powerful 256-bit AES encryption*. This function can be used completely independent of the Backup function.

*Elite uses parts of the 7-Zip program and the SevenZipVCL encryption algorithm. 7-Zip is licensed under the GNU LGPL, and the source code is available at www.7-zip.org. For information regarding SevenZipVCL, please visit www.rg-software.de.

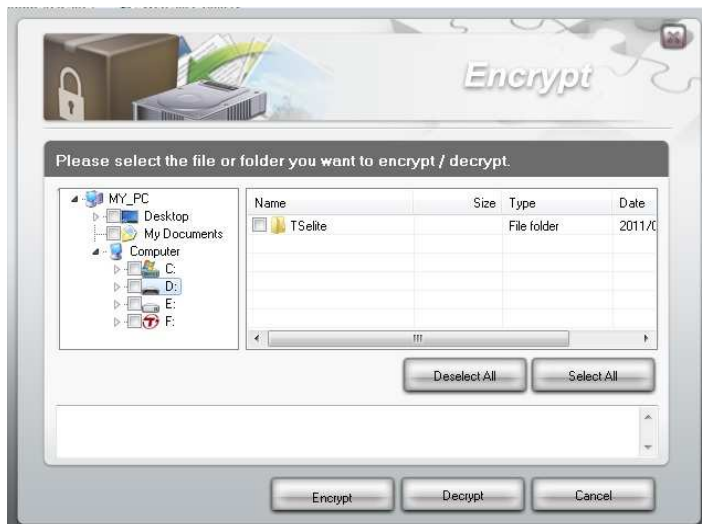


Protecting Files & Folders

1. Double-click the Elite icon () in the Windows System Tray
2. Select “**Encrypt**” from the Main Menu.



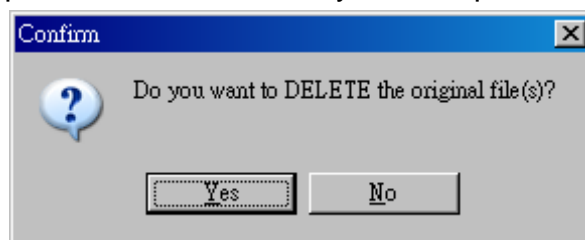
3. Select the files you want to protect and click “**Encrypt**”. Use the column on the left to browse for folders, and select specific files in the window on the right. Check-marking a folder in the left hand column will automatically mark all of the files and subfolders contained within that folder.



4. Choose a Password for your file(s) and enter it again in the Confirm field.



5. You will then given the opportunity to remove the original file(s). If you click “Yes,” only the encrypted version will remain. This will ensure nobody but you will be able to open the file or files that you have protected.



Decrypting Your Data

1. Select “**Encrypt**” from the Main Menu.
2. Locate your encrypted files or folders and click the checkboxes next to the items you want to unprotect. Encrypted files can be identified by the date stamp in the filename, and the file extension will be “.enc”.

Example:

Original File Name: “*MyDiary.doc*”

Protected File Name: “*MyDiary.doc_2011-01-03_17-07-53.enc*”

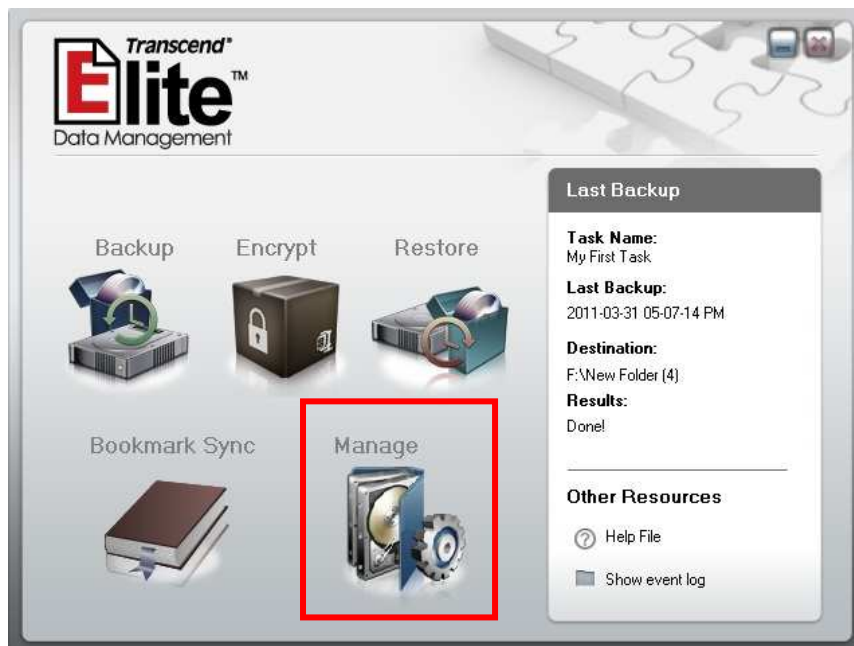
3. After selecting the file(s) you wish to unprotect, click the “**Decrypt**” button and enter the password you used at the time of encryption.

WARNING: If you use Encryption, you will not be able to access your files without the correct password. *Do not forget your password.* Transcend will not be responsible for lost passwords or inaccessible files, and does not provide data recovery service.

Backup Management

Each time you run one of your Backup Tasks, a new backup file containing the latest versions of your files will be created and stored in your desired backup location. Over time, these backups can accumulate and use up a considerable amount of storage space. If your backup storage device gets low on space, the Backup Manager allows you to browse through all previous backups and delete old, redundant, or unnecessary backup points.

1. Double-click the Elite icon () in the Windows System Tray
2. Select “**Manage**” from the Main Menu.




3. The “**Backup Manager**” will display a list of all your Backup Tasks, along with every backup instance performed for each Task. When you click an item, detailed information about the backup will be shown on the left hand side of the screen. To delete older or unwanted backup points, simply select one of the backup instances listed under the Backup Task and click “**Delete**.”




Bookmark Sync

Elite can synchronize all your Internet Explorer Favorites or Firefox Bookmarks with your portable device, allowing you to use any compatible computer to browse your favorite websites just like you would at home.

Copy to Storage Device


1. Double-click the Elite icon () in the Windows System Tray
2. Select “**Bookmark Sync**” from the Main Menu.



3. Select your Internet browser.
4. Click  to copy your computer’s current Favorites/Bookmarks to the storage device.
5. Press “**Start**” to start the operation.




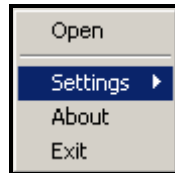
Copy to Computer

1. Select your Internet browser.
2. Click  to update your browser's Favorites/Bookmarks to the latest version from your storage device.
3. Press "**Start**" to start the operation.



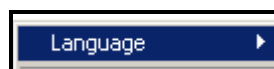
Settings

To change languages and adjust other Elite settings, right click on the Elite icon () in the Windows System Tray and select “**Settings.**”



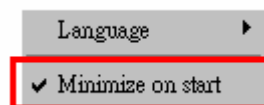
Language:

Use the drop-down menu to select one of the available languages. This will change the User Interface language for all of menus within Elite.



Minimize on startup:

This option will allow Elite to run in the background when you open the program instead of opening the Main Menu window. It is a good idea to always keep Elite running so that it can perform scheduled Backup Tasks.



PC-Lock:

Select PC-Lock to temporarily lock your desktop or notebook computer and prevent others from accessing your data while you are away.



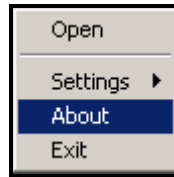
To Lock Your Computer: Enter a password in the dialog box and unplug your Transcend storage device. A photo slideshow will be displayed while the computer is locked.

To Unlock Your Computer: Press any key to bring up the password window. Enter the same password you used to lock your computer. The slideshow will

disappear and you will be free to use your computer again.


About:

This will display detailed information about the Elite software version you are using.



Closing the Program

If you have not scheduled any automatic Backup Tasks and wish to exit Elite, it is very important that you **only use the following method to close the software application**:

1. Right-click the Elite icon () in the Windows System Tray and select “Exit.”



2. A confirmation window will be displayed. Click “Yes” to close the program.



WARNING: To prevent data loss, always use this procedure to close the Elite application. Force-closing the software may result in *irrecoverable data loss*.

Helpful Tips

Use Elite instead of “copy & paste”

Whether you are backing up data for long-term storage or simply moving files to a different location, use Elite instead of the “copying and pasting.” This will not only save time by making sure all files and subfolders are copied reliably, but will also give you the opportunity to execute the same procedure again in the future with easy scheduling options. Or, you can even use the [One Touch auto-backup](#) button to instantly backup specified files and folders (not available on all StoreJet models).

Travel back in time with different restore points

By default, Elite creates a new backup folder with a date stamp each time a backup is performed (whether manually or scheduled). This means that when you need to restore files, you can choose from different backup points to retrieve earlier or newer versions of your files. For novice users, this is the safest and way to ensure you can always go back to an earlier point in time, even if you deleted some files along the way. However, advanced users looking to save hard drive space should check out the Real-time Backup option.

Real-time Backup saves time – and hard drive space!

Backup your data version-by-version. Novice users should start by performing a full backup without enabling any advanced options. For more advanced users, we suggest trying the Real-time Backup option. [Real-time Backup](#) will automatically update the backup version of a folder or folders whenever you add new files or make changes to existing files within the folder. Real-time Backup works incrementally – which means it saves hard drive space by only updating newly-added or changed files. The only drawback to using Real-time backup

Be careful with passwords

When encrypting your files, always choose a password that is easy to remember. You can use the same password for all of your Backup Tasks. Passwords are case-sensitive, so make sure the Caps Lock function on your keyboard is not enabled.

FAQ

Q: Elite does not start when I double-click its icon. What's wrong?

A: Make sure your StoreJet or JetFlash drive is properly connected to the computer. The Elite software only works in Windows 7, Vista, and XP.

Q: Why didn't my scheduled backup take place?

A: For scheduled backups to run properly, all hard drives, and all computers that contain hard drives associated with the scheduled Backup Task, must be connected and powered on during the time of the scheduled backup. Additionally, if the backup destination drive runs out of storage space, scheduled backups will not take place.

Q: Why doesn't One Touch auto-backup work?

A: Did you mark the One Touch Backup field next to the Backup Task? If not, [see here](#) to learn how. This function only works with Transcend StoreJet brand drives that have a One Touch auto-backup button

Q: An error message appears when restoring files

A: This message usually means that you have moved, renamed or deleted some of the source or destination drives/folder/files associated with the Backup Task.

Q: Some of the files specified in the Backup Task did not get backed-up

A: Check to make sure the source file or folder is correct, and that no errors occurred during the backup procedure.

More Help

If you cannot find the answer to your problem in this manual and are having difficulty with the Elite software, your Transcend StoreJet drive or JetFlash drive, Please visit our Tech Support website at www.transcend.com.tw/support

© 2011 Transcend Information, Inc. All rights reserved. All brand names are registered trademarks of their respective owners. Specifications subject to change without notice.