

CREATIVE

W I R E L E S S

Sound
BLASTER

RECON^{3D}
OMEGA



User's Guide

Model No. GH0200

Congratulations!

Prepare to experience the power of Sound Core3D™ hardware accelerated gaming audio. A new era in gaming audio is here as amazing audio processing power previously available only in internal PC audio card solutions is now transformed into a stylish and powerful wireless gaming audio system for your Xbox® 360, Playstation® 3, PC or Mac®. SBX Pro Studio™ greatly enhances ordinary gaming audio with 3D surround while CrystalVoice™ powers online voice communications.

System Requirements

Minimum Requirements for Xbox 360 and PS3

- Available USB 1.1 or 2.0 port

Minimum Requirements for PC and Mac

- 512MB RAM
- 600 MB of free hard disk space
- Available USB 1.1 or 2.0 port

For Windows

- Microsoft® Windows® 8 32-bit or 64-bit, Windows 7 32-bit or 64-bit, Windows Vista® 32-bit or 64-bit with Service Pack 1 or higher
- Intel® Pentium® 4 or AMD® equivalent processor, 1.6 GHz or faster
- Intel, AMD or 100% compatible motherboard chipset

For Mac

- Mac OS® X 10.5 or higher
- Intel Core™ Duo processor, 1.6 GHz or faster

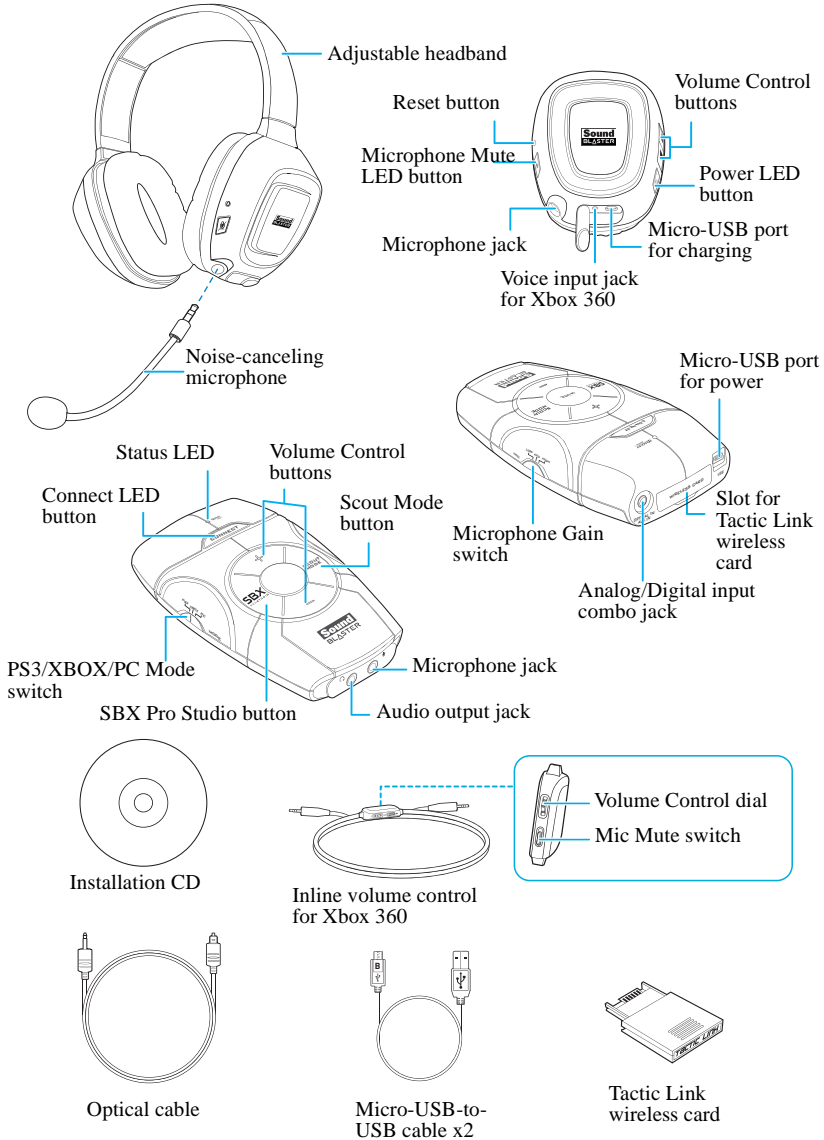
Recommended Requirements

- Intel Core 2 Duo or AMD equivalent processor, 2.0 GHz or faster
- 1 GB RAM

NOTE Due to programming changes, the recommended system requirements for the software may change over time.

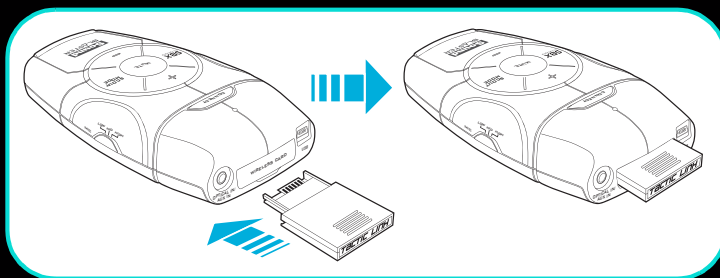
About Your Audio Device

Sound Blaster Recon^{3D} Omega Wireless



Setting Up Your Audio Device

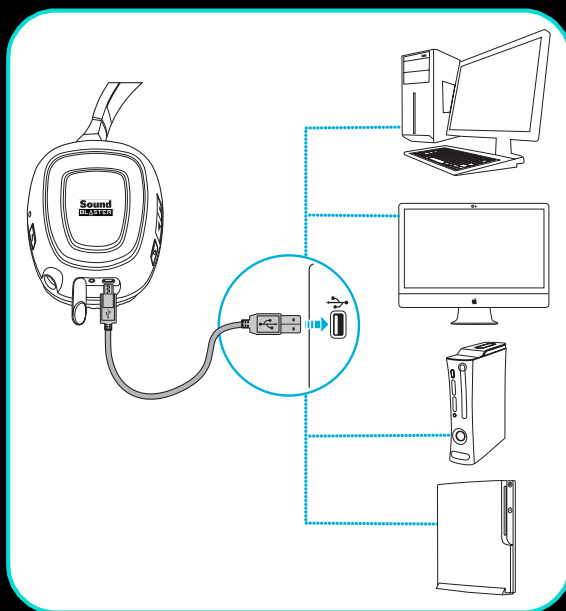
Step 1: Insert the wireless card into the audio device



- NOTE**
- Insert the wireless card before powering up the audio device. Do not insert or remove the wireless card while the audio device is on.
 - Your headset and wireless transmitter are paired together and are ready to use. The Connect LED on the audio device and headset will light up blue. If you wish to pair them manually, refer to Using the Wireless Features.
 - While the wireless headset is turned on, audio will be played back through the headset instead of the headphone jack on the audio device.

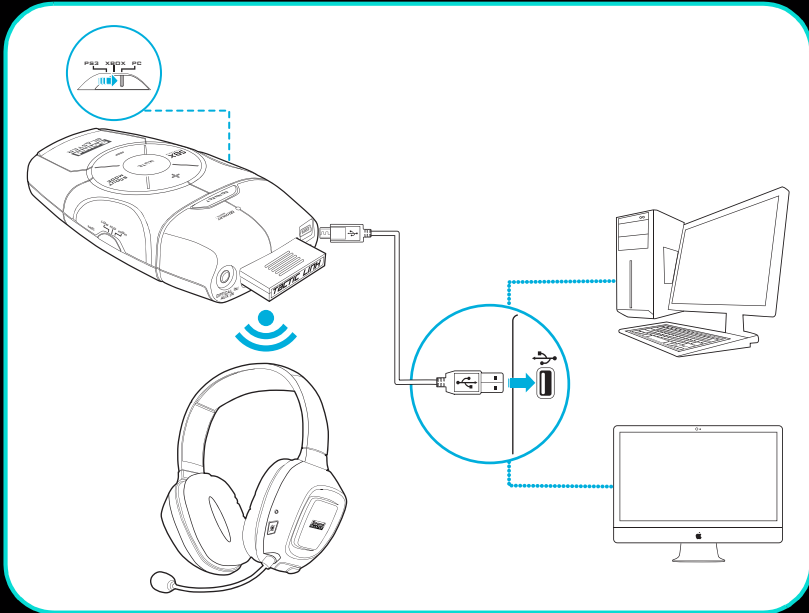
Step 2: Charge your headset

When using your headset for the first time, you should charge the headset for at least 5 hours. Connect your headset to the computer or console and turn off the headset while charging. The Power LED flashes red when charging, and lights up red when fully charged.



For PC/Mac

Your audio device can be used without installing any software. However to enjoy the full features of your audio device such as SBX Pro Studio and CrystalVoice enhancements, we recommend you to install the drivers and applications for it by following the steps below.



- NOTE**
- Slide the Mode switch on the audio device to PC.
 - If prompted for the audio drivers, click the Cancel button.

Step 3: Install the software

For Windows 8

- 1 Insert the Installation CD into the CD or DVD drive.
- 2 In a short while, a drive icon will be displayed. Click on the icon, and then choose **Run setup.exe**.
If you do not see the drive icon, follow the steps below:
 - i. Right-click on the background of the Windows start screen, and then click **All apps**.
 - ii. Click **Computer**.
 - iii. Right-click the CD or DVD drive icon, and then click **Open AutoPlay**.
- 3 To complete the installation, follow the instructions on the screen.
- 4 When prompted, restart your computer.

For Windows 7 / Windows Vista

- 1 Insert the Installation CD into the CD or DVD drive.
Your CD should start automatically. If it does not, follow the steps below:
 - i. Click **Start ► My Computer**.
 - ii. Right-click the CD or DVD drive icon, then click **Open Autoplay** or **Autoplay**.
- 2 To complete the installation, follow the instructions on the screen.
- 3 When prompted, restart your computer.

For Mac OS

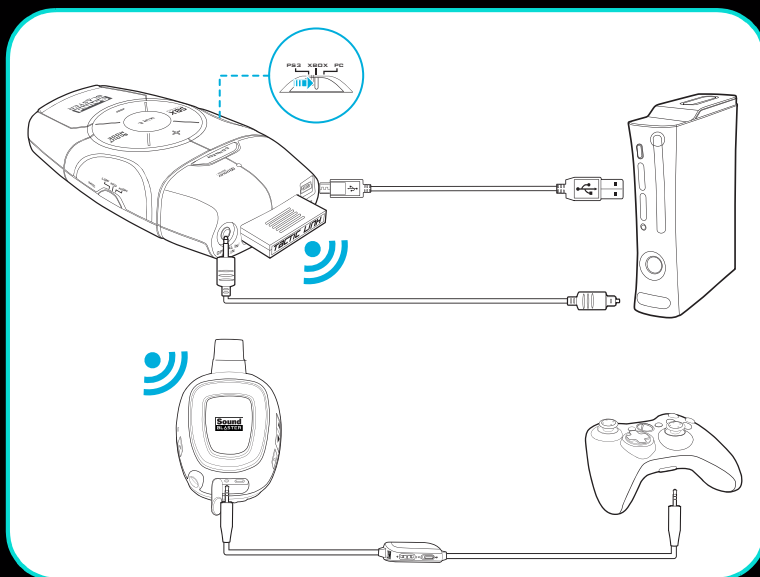
- 1 Insert the Installation CD into the CD or DVD drive.
- 2 Double-click the <SB_INSTALL> icon.
- 3 Double-click the <Install> icon.
- 4 To complete the installation, follow the instructions on the screen.

You can launch the Sound Blaster Recon3D Control Panel from the Applications\Creative\Sound Blaster Recon3D folder.

Step 4: Set the default audio device (For Mac OS only)

- 1 Go to **System Preferences**, then click **Sound**.
- 2 Click the **Output** tab, then select **Sound Blaster Recon3D**.
- 3 Click the **Input** tab, then select **Sound Blaster Recon3D**.

For Xbox 360

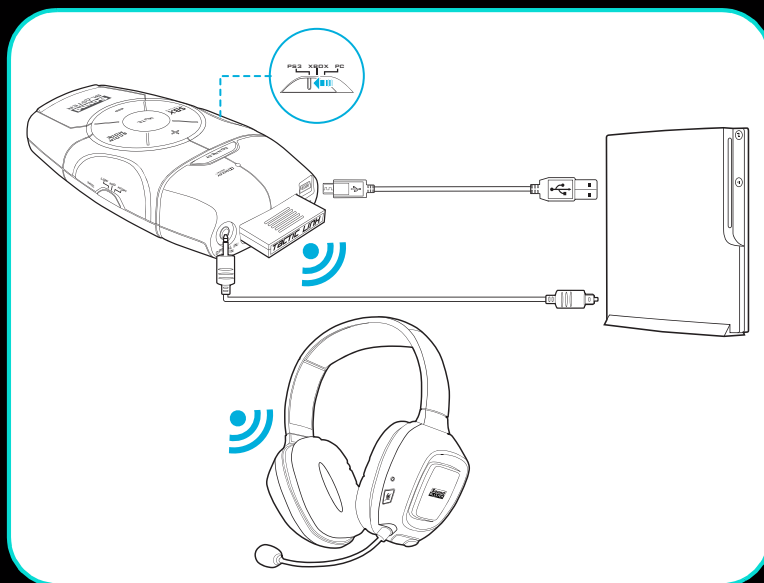


NOTE Slide the Mode switch on the audio device to Xbox.

From the main menu, navigate to System Settings ► Console Settings ► Audio ► Digital Output, then select Dolby Digital 5.1.

Press the Xbox Guide button on your controller. From the menu, navigate to Settings ► Preferences ► Voice ► Voice Output, then select Play Through Both.

For Playstation 3



- NOTE**
- Slide the Mode switch on the audio device to PS3.
 - If you are using the audio extension cable, slide the Mode switch on it to PS3.

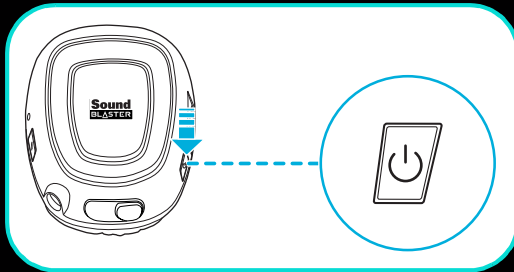
From the main menu, navigate to Settings ► Sound Settings ► Audio Output Settings, then select Optical.

From the main menu, navigate to Audio Multi-Output, then select On.
From the main menu, navigate to Accessory Settings ► Audio Device Settings, then change both Input Device and Output Device to Sound Blaster Recon3D.

Using the Headset

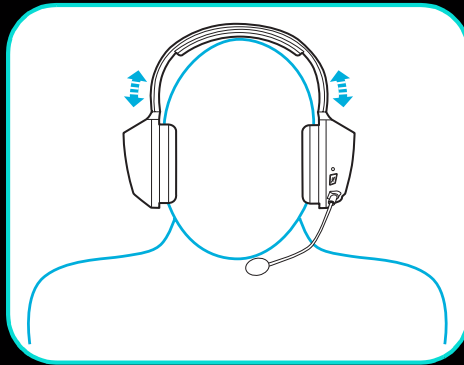
Turn on/off the headset

Press and hold the headset's Power button for three seconds to turn it on/off. The Power LED lights up blue when the headset is turned on.



Put on the headset

Adjust the headband so that the headset rests lightly on your head. Do not tighten excessively.



CAUTION Adjust headset volume to a comfortable level. Do not listen to audio on your headset at high volumes for prolonged periods of time as hearing loss might result.

Setting the volume level

In general, you should set the playback volume on the console to the maximum, and use the volume controls on the audio device or headset to adjust the loudness to your desired level. However, if the sound distorts, lower the playback volume to avoid overloading the audio circuits.

Low power notification

When your headset is running low on power, the Power LED will turn red and the headset will emit a beeping sound.

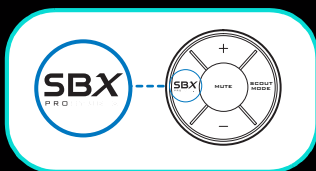
Using your headset while charging

You can continue to use your headset even while it charges. The Power LED flashes blue while charging and lights up blue when fully charged.

Your Audio Device Features

Turn on/off SBX Pro Studio

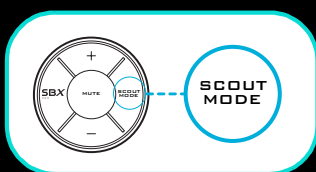
Press to turn SBX Pro Studio effects on or off.



NOTE Scout Mode will be turned off while SBX Pro Studio is on.

Turn on/off Scout Mode

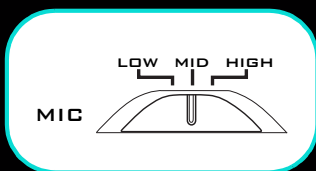
Press to turn Scout Mode on or off.



NOTE Scout Mode will be turned off while SBX Pro Studio is on.

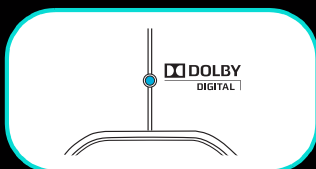
Adjust Microphone Gain

Slide the Microphone Gain switch to Mid or High if you find that your voice input is too soft.



Dolby Digital Decoding

If a Dolby Digital audio stream is detected by Sound Blaster Recon^{3D}, the Status LED will light up blue.

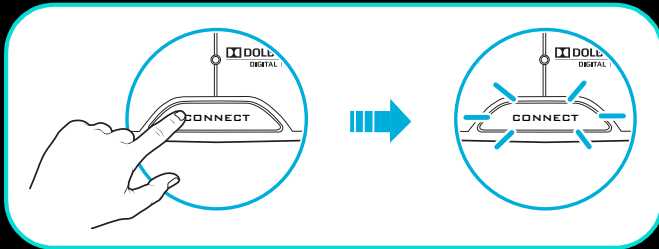


Using the Wireless Features

The wireless capability gives you the convenience and freedom to move around up to a distance of 30 feet (10 meters) away from the transmitter. Your headset and wireless transmitter are paired together and are ready to use. If you wish to pair them manually, follow the steps below.

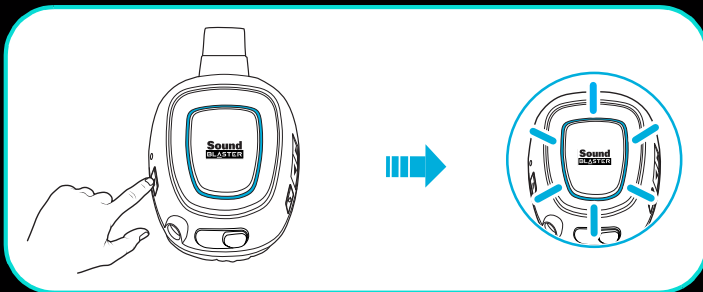
Step 1: Activate pairing mode on the audio device

Press and hold the audio device's Connect LED button for three seconds. It will then begin flashing blue.



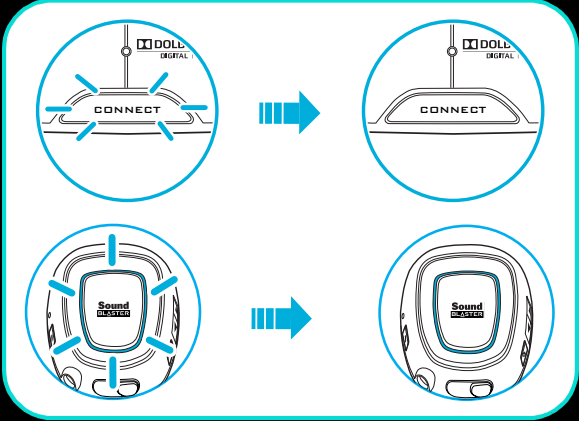
Step 2: Activate pairing mode on the headset

Press and hold the headset's Microphone Mute button for three seconds. The Connect LED will then begin flashing blue.

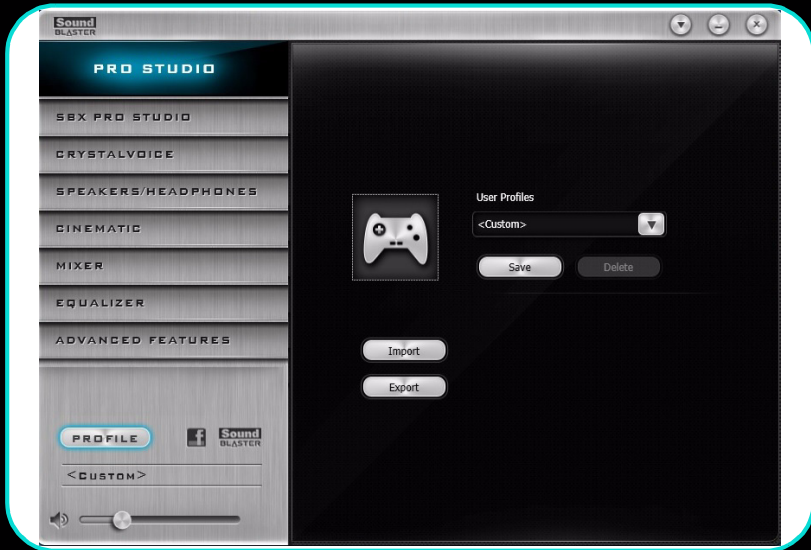


Step 3: Successful pairing

The Connect LED on the audio device and headset will stop flashing and light up blue when paired.




Sound Blaster Recon^{3D} Control Panel



Managing your Profiles

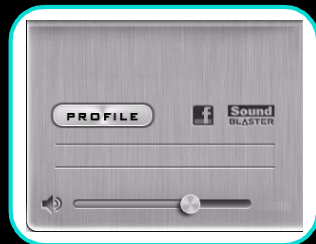
Click the **PROFILE** button to display the Profiles pane.

Activate a profile by clicking  and selecting it from the list.

Click  to save all settings to the current profile or create a new profile. Click  to delete the active profile.

Sharing Profiles

You can export your custom settings and share them with others, or import other gamers' custom settings.

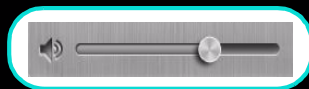


- NOTE**
- Sound Blaster Recon3D profiles and Sound Blaster Tactic3D profiles are not compatible with each other.
 - Sound Blaster Recon3D profiles for Windows and Mac are not compatible with each other.

Adjusting your master volume settings

Drag the master volume slider to adjust the volume level.

You can mute/unmute the volume by clicking the speaker icon.




Configuring your software settings

Click each feature to access its settings page. More information on each feature can be found in their respective sections in this manual.



Configuring your general settings

You can change the language settings or restore settings to their default values. Click  and select the option from the list.




SBX Pro Studio Settings



- ① **SBX Pro Studio enhancements**
Select to enable or disable each enhancement.
- ② **Enhancement Level sliders**
Adjust the amount of enhancement to apply.
- ③ **Audio Test controls**
Play/Pause or Stop the demo video.

Enhancing your listening experience

You can adjust the amount to apply for each enhancement by dragging its slider left to decrease or right to increase. To test the effects of the audio enhancements, click  and listen to the demo video.

You can save your customized setting to your audio device, letting you recall it when you activate the SBX Pro Studio button. This lets you enjoy the same audio enhancements on your console. To learn how to save your settings, refer to Advanced Features Settings.


CrystalVoice Settings



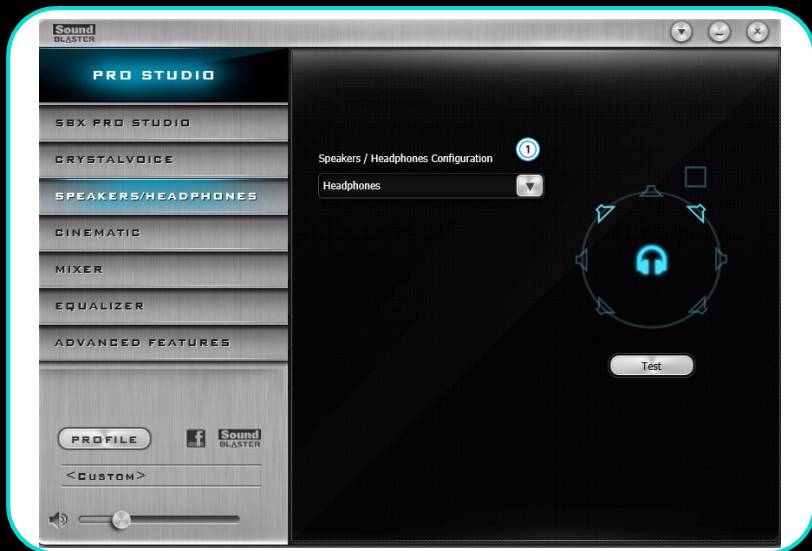
① CrystalVoice enhancements

Select to enable or disable each enhancement.

Having fun with CrystalVoice FX

Select a voice preset to use, then click  and speak into your microphone to hear how your voice sounds with the preset applied.


Speakers/Headphones Settings



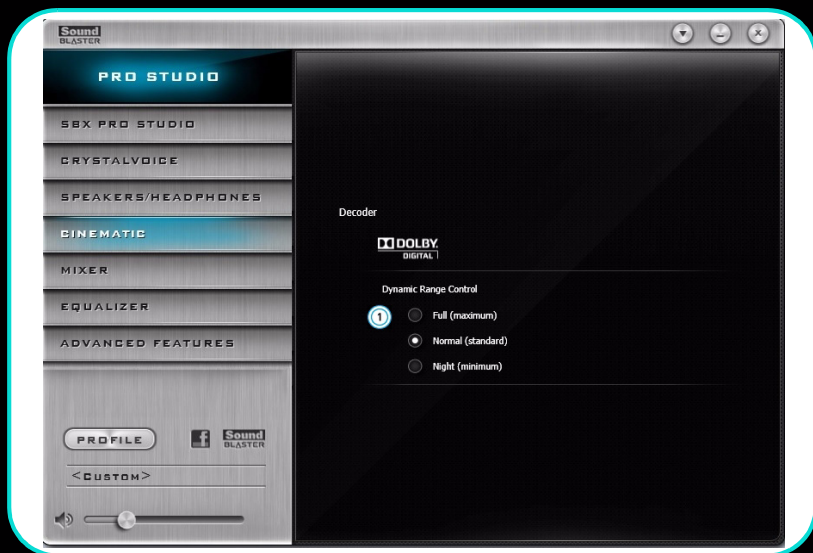
① Device selection

Select the number of speakers or headphones that you are using.

Testing your audio playback

Select the appropriate configuration based on your setup, then click  to hear a sample audio clip being played back through your setup.

Cinematic Settings



① Decoder controls

Set the options for the Dolby Digital decoder.

Configuring your digital audio connection

Dynamic Range Control adjusts the volume level of the soundtrack automatically during soft or loud sections to enable you to hear all the sounds clearly.

Mixer Settings





① Volume sliders

Adjust the playback and recording volume for your various inputs and outputs. Drag the sliders to the right to increase or left to decrease the volume.

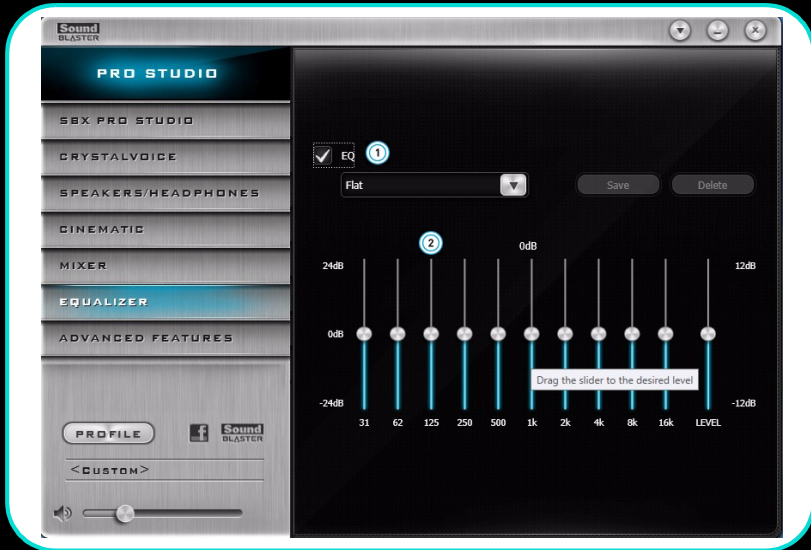
② Input Monitoring

Input monitoring allows you to listen to your audio inputs from the Auxiliary or Microphone.

Adjusting your Mixer settings

Click the  icon to mute/unmute the input/output. Click the  icon to adjust the settings for your input/output.

Equalizer Settings



①

EQ presets

Select an equalizer preset to apply to your audio.

②

EQ sliders

Adjust the equalizer settings.

Customizing your EQ settings

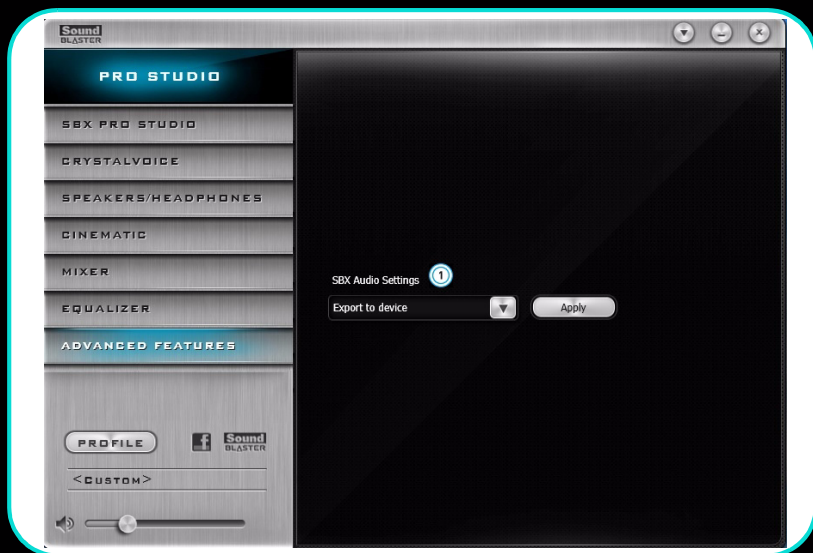
Select the EQ checkbox to enable this feature, then click the EQ drop-down arrow and select a preset from the list.

Selecting a preset will move the EQ sliders to the appropriate values. You can adjust the equalizer setting by dragging the sliders up or down to the desired level.

You can save your custom settings as new presets or delete existing ones.

NOTE The list of default EQ presets cannot be deleted.

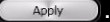
Advanced Features Settings



1 Save/Load SBX Pro Studio settings

Save your current settings to your audio device or load your audio device's current settings.

Saving/Loading SBX Pro Studio settings

You can get the same audio enhancements used with your PC/Mac on your console or vice versa. Select either Import from Device or Export to Device from the drop-down box, then click .

NOTE Only one setting can be saved onto Sound Blaster Recon^{3D}. If you save a new setting, the old one will be replaced automatically.

Using Your Audio Device

Playing Games

Your audio device is equipped with cutting edge audio technologies and software to enhance the audio in your games. SBX Pro Studio will elevate your gaming experience to the next level, allowing you to hear sound details in games you have never heard before!

SBX Pro Studio Surround provides immersion control of sounds not just around you, but also above and below for a full 3D audio experience. Hear the natural sense of audio depth, spaciousness and stunning 3D surround effects from your audio content. Enjoy an unbelievably true-to-life audio experience, whether it's over stereo speakers or headphones.

SBX Pro Studio Crystalizer restores the dynamic range that is lost when iTunes and MP3 music gets compressed. This makes the music sound as good as the artist originally intended, and adds an enhanced level of realism for movies and games.

SBX Pro Studio Bass fills in the low frequency tones and gives the extra impact for a better entertainment experience. It dramatically improves the sound experience without a subwoofer.

SBX Pro Studio Smart Volume addresses the problem of abrupt volume level changes during playback and between songs by automatically and continuously measuring volume, and intelligently applying gain and attenuation to compensate for those changes.

SBX Pro Studio Dialog Plus enhances the voices in movies for clearer dialog, allowing the listener to hear the dialog over the rest of the soundtrack and over ambient noise in the listening environment.

Scout Mode transforms your hearing and enables you to hear your opponents from further away, giving you a distinct tactical advantage in combat.

Communicating with Voice over Internet Protocol (VoIP)

Use a headset with your audio device to enjoy outstanding acoustic performance in popular VoIP applications like Ventrilo® and TeamSpeak®. Hear and be heard clearly by teammates during multiplayer games to get the tactical edge.

CrystalVoice FX enables the speaker's voice to be altered with a variety of effects, which can be used to enhance the tone of the speaker's voice, create interesting accents or to sound like a completely different person.

CrystalVoice Smart Volume automatically adjusts the loudness of the speaker's voice to maintain a consistent volume level. This makes it convenient for the speaker to converse normally, regardless of whether the speaker is close to or far away from the microphone.

CrystalVoice Noise Reduction enables the speaker to be heard clearly over background noise by constantly monitoring the environment and eliminate the unwanted noise that interferes with the conversation.

CrystalVoice Acoustic Echo Cancellation eliminates echoes and enables the speaker to listen to the other party clearly. Echoes are a common problem present in voice communication systems that disrupts conversations by making it difficult to hear the other party.

Configuring Creative ALchemy


When playing DirectSound[®] 3D games on Windows 8, Windows 7 and Windows Vista, the game loses its immersiveness and environmental effects due to changes in audio architecture.

To restore these effects and experience the full audio immersion, follow the steps below:

Enable Windows XP compatibility mode

- 1 Navigate to the folder where you have installed the game.
- 2 Right-click on the game's launcher and select Properties.
- 3 Select the Compatibility tab and select the Compatibility Mode checkbox.
- 4 Click the Compatibility Mode drop-down arrow and Select Windows XP (Service Pack 2), then click OK.

Enable the game in Creative ALchemy

- 1 Click Start ► Programs or All Programs ► Creative ► ALchemy ► Creative ALchemy. The game should be detected automatically and appear in the left column.
- 2 Select the game and click  to move it to the right column.
- 3 Close the application.

When you launch the game you should hear the original effects.

NOTE If the game is not detected, do the following:

- Navigate to the folder where you have installed the game.
- Right-click on the game's launcher and select Run as administrator.
- Exit the application and launch Creative ALchemy again. The game should now appear in the left column.

Software Suite

Visit www.soundblaster.com to download the latest drivers and applications available for your audio device.

The following applications are designed for you to access the basic as well as the advanced features of your audio device.

Creative Software Suite

For PC:

- Sound Blaster Recon^{3D} Control Panel
- Creative ALchemy
- Creative System Information

For Mac:

- Sound Blaster Recon^{3D} Control Panel

- NOTE**
- The applications available for your audio device may differ from those listed here.
 - Some applications are available for certain operating systems only.

General Specifications

Connectivity

On the audio device

- One 3.5 mm (1/8") stereo jack for audio output
- One 3.5 mm (1/8") microphone jack for voice input
- One 3.5 mm (1/8") stereo/optical combo jack for audio input from game console

On the headset

- One 3.5 mm (1/8") stereo jack for connecting the detachable microphone
- One 2.5 mm (1/10") microphone jack for voice input through the Xbox 360 controller

Interfaces

On the audio device

- Micro-USB port for connecting to game console or PC/Mac
- Proprietary slot for wireless card

On the headset

- Micro-USB port for charging the battery

Technical Specifications

- Operating RF range: 2405 - 2477 MHz
- Operating RF distance: up to 30 ft (10 m)
- Number of RF channels: 37
- RF transmitter power output: 0 dBm (typical)
- Lithium Ion Battery: 3.7V 670mAh (2.48Wh)
- USB Input: 5V  500mA

NOTE You cannot tune the RF channels.

SBX Pro Studio Technology

- SBX Pro Studio Crystalizer
- SBX Pro Studio Surround
- SBX Pro Studio Bass
- SBX Pro Studio Dialog Plus
- SBX Pro Studio Smart Volume

Sound Blaster CrystalVoice Technology

- CrystalVoice Acoustic Echo Cancellation
- CrystalVoice Noise Reduction
- CrystalVoice Smart Volume
- CrystalVoice FX

Troubleshooting

Problems with Multiple Audio Devices

The onboard audio chipset seems to be in conflict with Sound Blaster Recon^{3D}.

Disable your computer's onboard audio chipset. See your computer's motherboard documentation for details.

Problems with Sound

No sound from the audio device.

Check the following:

- You have configured your console or PC/Mac to output audio through the audio device.
- The volume settings in Sound Blaster Recon^{3D} Control Panel and system audio are properly adjusted and not muted.
- There is no hardware conflict between the audio device and a peripheral device.

There is clipping/distortion during audio playback.

Check the following:

- Your computer system should be running in high performance mode. You may need to disable any power saving features.

Problems with SBX Pro Studio

Some features are disabled when playing certain games.

When playing games that use DirectSound3D or OpenAL sound engines, certain audio features will be disabled automatically. This is to avoid distorting the environmental audio cues present in the game. These features will be re-enabled automatically when you exit the game.

Problems with Wireless Features

Electronic interference is occurring with other wireless devices.

Do the following:

- Set your wireless LAN router's channel to Auto, 1 or 11. To do this, refer to your router's user documentation.
- Place your audio device away from other devices (for example, wireless routers) that transmit wireless signals.
- Place your audio device or receivers away from large metal surfaces.
- Refrain from doing large file transfers via the wireless internet or Bluetooth connection while you are streaming music. Alternatively, stop streaming music during intensive file transfers.

Sound is not being transmitted to my headset.

Check the following:

- The wireless card is inserted properly into the audio device.
- The audio device and headset are turned on.
- The headset has sufficient battery power.
- The audio device and headset are paired with each other.

Safety Information

Refer to the following information to use your product safely, and to reduce the chance of electric shock, short-circuiting, damage, fire, hearing impairment or other hazards. Improper handling may void the warranty for your product. For more information, read the warranty available with your product.

- Do not dismantle or attempt to repair your product.
Refer all servicing to authorized repair agents.
- Do not expose your product to temperatures outside the range of 0°C to 40°C (32°F to 104°F).
- Do not pierce, crush or set fire to your product.
- Keep your product away from strong magnetic objects.
- Do not subject your product to excessive force or impact.
- Do not expose your product to water or moisture.
- If your product is moisture-resistant, take care not to immerse your product in water or expose it to rain.

Earphones

- When a conductive apparatus, such as earphones, is used in close proximity with a CRT television or CRT monitor, the latter may emit an electrostatic discharge. The electrostatic discharge can be felt as a static shock. While this static shock is usually harmless, it is good practice to avoid close contact with CRT devices when using earphones.
- Do not listen to audio on your earbuds or headphones at high volume for prolonged periods of time as hearing loss may result. For users in the United States, go to www.hei.org for more information.
- Do not listen to your audio device at high volume when driving, cycling or crossing the road, especially in heavy traffic, or in any other traffic condition where such use will hinder safe travel on the roads. We recommend that consumers be extremely cautious when using this device on the road.



Avoid Hearing Damage

Permanent hearing loss may occur if the headphone is used at high volume. Set the volume to a safe level. You can adapt over time to a higher volume of sound that may sound normal but can be damaging to your hearing. If you experience ringing in your ears or muffled speech, stop listening and have your hearing checked. The louder the volume, the less time is required before your hearing could be affected. Hearing experts suggest that to protect your hearing:

- Limit the amount of time you use the headphone at high volume.
- Avoid turning up the volume to block out noisy surroundings.
- Turn the volume down if you can't hear people speaking near you.

Embedded Battery

- Do not attempt to remove the embedded battery.
The product must be disposed of according to local environmental regulations. To replace the battery, return your product to your regional support office. For product service information, go to www.creative.com.
- Do not expose to excessive heat such as sunshine, fire or the like
- CAUTION: Risk of explosion if battery is replaced by incorrect types.

Wireless Device

- The short wave radio frequency signals of a wireless device may impair the operation of other electronic and medical devices.
- Switch off the device where it is prohibited. Do not use the device in medical facilities, aircraft, refueling points, close to automatic doors, automatic fire alarms or other automatically controlled devices.
- Keep this device at least 20cm from pacemakers and other medical devices. Radio waves may impair the operation of pacemakers and other medical devices.

IMPORTANT — A LIRE AVEC ATTENTION

Ecouter de manière prolongée, à un très haut volume sonore de la musique (au dessus de 80 decibels), au moyen d'un casque ou d'écouteurs, peut entraîner une détérioration irréversible et définitive de vos facultés auditives. L'usage répété et habituel d'un casque ou d'écouteurs à un niveau de volume sonore trop élevé peut donner l'impression à l'utilisateur que le volume sonore émis par l'appareil n'est pas suffisant. L'utilisateur sera tenté d'augmenter, petit à petit, son réglage habituel, risquant ainsi d'atteindre un niveau dangereux pour ses oreilles. Afin de protéger votre santé, et vos oreilles, veillez à maintenir le volume de la sortie casque de votre appareil à un niveau adapté et à interrompre son utilisation régulièrement et particulièrement si des symptômes, comme des troubles de l'ouïe, se manifestent.

N'utilisez pas le casque ou les écouteurs pendant la conduite d'une voiture, d'une bicyclette ou de tout autre véhicule motorisé, afin d'éviter tout accident de la circulation. En outre, il est interdit dans certains pays d'utiliser un casque ou des écouteurs en conduisant. Il peut être également dangereux d'écouter à volume élevé tout en marchant, spécialement aux passages piétons. Soyez toujours extrêmement prudent et cessez d'utiliser cet appareil dans les situations présentant des risques d'accident.

Évitez d'utiliser le casque ou les écouteurs à volume élevé. Les médecins spécialistes de l'audition déconseillent une écoute continue à volume trop élevé. Si vous percevez un sifflement dans les oreilles, réduisez le volume ou cessez l'écoute.

Maintenez un volume d'écoute modéré. Vous pourrez ainsi entendre les sons extérieurs et être attentif aux gens qui vous entourent.

Votre produit Creative accompagné des écouteurs fournis, est conforme à la réglementation française concernant les baladeurs musicaux (Arrêté du 24 Juillet 1998). Les caractéristiques techniques de ces écouteurs se trouvent dans le manuel en ligne et/ou sur le site internet de Creative. Si vous choisissez d'utiliser un autre casque ou d'autres écouteurs, veuillez vous assurer au préalable que leurs caractéristiques techniques soient les mêmes.

срок эксплуатационной долговечности

В соответствии с законодательством Российской Федерации компания Creative устанавливает для данного товара срок службы 2 года. Указанный срок – это период времени, в течение которого компания Creative гарантирует возможность использования продукции в соответствии с ее назначением. Кроме того, во время этого срока компания Creative гарантирует:

(i) безопасность товара, (ii) возможность выполнения его ремонта и получения технической поддержки, (iii) поставку запасных частей. Однако установление срока службы не означает автоматического бесплатного предоставления технической поддержки и обслуживания. Эти виды услуг предоставляются бесплатно только в течение гарантийного периода в соответствии с гарантийными обязательствами.

Regulatory Information

Notice for the USA

FCC Part 15: This equipment has been tested and found to comply with the limits for a Class B digital device, pursuant to Part 15 of the FCC Rules. These limits are designed to provide reasonable protection against harmful interference in a residential installation. This equipment generates, uses and can radiate radio frequency energy and, if not installed and used in accordance with instructions, may cause harmful interference to radio communications. However, there is no guarantee that interference will not occur in a particular installation. If this equipment does cause harmful interference to radio or television reception, which can be determined by turning the equipment off and on, the user is encouraged to try to correct the interference by one or more of the following measures:

- Reorient or relocate the receiving antenna.
- Increase the separation between the equipment and receiver.
- Connect the equipment into an outlet on a circuit different from that to which the receiver is connected.
- Consult the dealer or an experienced radio/TV technician for help.

This device complies with part 15 of the FCC Rules. Operation is subject to the following two conditions:

- 1 This device may not cause harmful interference, and
- 2 This device must accept any interference received, including interference that may cause undesired operation.

CAUTION: To comply with the limits of the Class B digital device, pursuant to Part 15 of the FCC Rules, this device must be installed with computer equipment certified to comply with Class B limits.

All cables used to connect to the computer and peripherals must be shielded and grounded. Operation with non-certified computers or non-shielded cables may result in interference to radio or television reception.

MODIFICATION: Any changes or modifications not expressly approved by the grantee of this device could void the user's authority to operate the device.

Federal Communication Commission (FCC) Radiation Exposure Statement

For Tactic Link wireless card - Model no. SB1310

This equipment complies with FCC radiation exposure limits set forth for an uncontrolled environment. This equipment should be installed and operated with minimum distance 20cm between the radiator & your body. This transmitter must not be co-located or operating in conjunction with any other antenna or transmitter.

For wireless headset – Model no. GH0130B

Power is so low that no exposure calculation is needed.

Notice for Canada

This Class B digital apparatus complies with Canadian ICES-003 and RSS-210.

Cet appareil numérique de la classe B est conforme aux normes canadiennes NMB-003 et CNR-210.

This device complies with Industry Canada licence-exempt RSS standard.

Operation is subjected to the following two conditions:

1. This device may not cause harmful interference, and
2. This device must accept any interference received, including interference that may cause undesired operation.

Cet appareil est conforme avec Industrie Canada RSS standard exempts de licence.

Son fonctionnement est soumis aux deux conditions suivantes :

1. Le matériel ne peut être source D'interférences et
2. Doit accepter toutes les interférences requies, Y compris celles pouvant provoquer un fonctionnement indésirable.

CANADIAN CLASS B STATEMENT: This digital device does not exceed the Class B limits for radio noise emissions from digital apparatus as set out in the interference-causing equipment statement entitled "Digital Apparatus", ICES-003 of the Department of Communications.

Cet appareil numérique respecte les limites de bruits radioélectriques applicables aux appareils numériques de Class B prescrites dans la norme sur le matériel brouilleur. "Appareils Numériques," NMB-003 édictée par le ministre des Communications.

MODIFICATION: Any changes or modifications not expressly approved by the grantee of this device could void the user's authority to operate the device.

Toute modification non approuvée explicitement par le fournisseur de licence de l'appareil peut entraîner l'annulation du droit de l'utilisateur à utiliser l'appareil.

European Compliance

This product conforms to the following:



EMC Directive 2004/108/EC.

RoHS Directive 2011/65/EU.

Mains operated products for the European market comply with Low Voltage Directive 2006/95/EC and Commission Regulation(s) Implementing Directive 2009/125/EC.

Communication / RF wireless products for the European market comply with R&TTE

Directive 1999/5/EC.

CAUTION: To comply with the Europe CE requirement, this device must be installed with CE certified computer equipment which meet with Class B limits.

All cables used to connect this device must be shielded, grounded and no longer than 3m in length. Operation with non-certified computers or incorrect cables may result in interference to other devices or undesired effects to the product.

MODIFICATION: Any changes or modifications not expressly approved by Creative Technology Limited or one of its affiliated companies could void the user's warranty and guarantee rights.

European Compliance

Ce produit est conforme aux normes suivantes :

Directive 2004/108/CE sur les émissions électromagnétiques.

Directive RoHS 2011/65/UE.

Les produits secteur pour le marché européen sont conformes à la Directive sur la faible tension 2006/95/CE et à la réglementation de la Commission exécutant la Directive 2009/125/CE.

Les produits de communication/sans fil RF destinés au marché européen sont conformes à la directive R&TTE 1999/5/CE.

ATTENTION : pour respecter les critères CE d'Europe, cet appareil doit être installé avec du matériel informatique certifié CE respectant les limites de la classe B. Tous les câbles utilisés pour connecter cet appareil doivent être blindés, reliés à la terre et ne pas faire plus de 3 m de long. L'utilisation d'ordinateurs non certifiés ou de câbles inappropriés peut entraîner des interférences avec d'autres appareils ou des effets indésirables sur le produit.

MODIFICATION : toute modification non approuvée explicitement par Creative Technology Limited ou l'une de ses sociétés affiliées peut entraîner l'annulation de la garantie et des droits de garantie de l'utilisateur.

Conformità alle normative europee

Questo prodotto è conforme alla seguente normativa:

Direttiva EMC 2004/108/CE.

Direttiva RoHS 2011/65/UE.

I prodotti che funzionano con corrente di rete per il mercato europeo sono conformi alla direttiva bassa tensione 2006/95/CE e alla direttiva di implementazione nelle normative europee 2009/125/CE.

I prodotti di comunicazione/wireless RF per il mercato europeo sono conformi alla Direttiva R&TTE 1999/5/CE.

ATTENZIONE: ai fini della conformità con i requisiti del marchio CE europeo, il dispositivo deve essere installato in un computer certificato CE conforme ai limiti di Classe B. Tutti i cavi usati per collegare il dispositivo devono essere schermati, dotati di idonea messa a terra e avere una lunghezza

massima di 3 metri. L'uso del dispositivo con computer non certificati o cavi non idonei può provocare interferenze ad altri dispositivi nonché danneggiare il prodotto stesso.

MODIFICHE: eventuali modifiche o alterazioni non espressamente approvate da Creative Technology Limited o dalle sue società controllate possono rendere nulli la garanzia e il diritto dell'utente a utilizzare il prodotto.

Einhaltung der europäischen Bestimmungen

Dieses Produkt erfüllt die folgenden Bestimmungen:

EMC-Richtlinie 2004/108/EG.

RoHS-richtlinie 2011/65/EU.

Netzbetriebene Produkte für den europäischen Markt erfüllen die Niederspannungsverordnung 2006/95/EG und der Commission Regulation(s) Implementing-Verordnung 2009/125/EG.

Drahtlose Kommunikationsgeräte/Funksender und -empfänger für den europäischen Markt erfüllen die R&TTE-Richtlinie 1999/5/EG.

ACHTUNG: Um die Anforderungen der europäischen CE-Norm zu erfüllen, muss dieses Produkt an einem CE-geprüften Computer der Klasse B angeschlossen werden. Alle Verbindungskabel zu diesem Gerät müssen abgeschirmt und geerdet sein und dürfen nicht länger als 3 m sein. Der Betrieb mit nicht zertifizierten Computern oder nicht ordnungsgemäßen Kabeln kann zu Störungen anderer Geräte oder unerwünschten Auswirkungen auf das Produkt führen.

MODIFIZIERUNG: Jegliche Änderung oder Modifizierung des Produkts, die nicht ausdrücklich von Creative Technology Limited oder einer der zugehörigen Firmen genehmigt worden ist, kann für den Benutzer zum Erlöschen der Garantie und der Gewährleistungsrechte führen.

Homologación para Europa

Este producto cumple:

la Directiva de compatibilidad electromagnética 2004/108/CE.

Directiva RoHS 2011/65/UE.

Los productos funcionando con corriente eléctrica cumplen con la Directiva 2006/95/CE de baja tensión y con la implementación de los requisitos de la Comisión para la directiva 2009/125/CE.

Los productos inalámbricos de comunicación o frecuencias de radio para el mercado europeo cumplen la Directiva 1999/5/CE de equipos de radio y terminales de telecomunicaciones.

ATENCIÓN: para cumplir con los requisitos de Homologación para Europa, este dispositivo debe instalarse con un equipo informático con certificación CE que cumpla los límites de la Clase B. Todos los cables utilizados para conectar este dispositivo deben estar protegidos, conectados a tierra y no tener más de 3 m de longitud. El funcionamiento del dispositivo con equipos no certificados o cables incorrectos podría provocar interferencias a otros dispositivos o efectos no deseados al producto.

MODIFICACIÓN: los cambios o modificaciones no aprobados expresamente por Creative Technology Limited o una de sus empresas afiliadas podrían invalidar la garantía del usuario y los derechos de la garantía.

Europese naleving

Dit product voldoet aan de volgende voorschriften:

EMC-richtlijn 2004/108/EG.

RoHS-richtlijn 2011/65/EU.

Electrische producten voor de Europese markt voldoen aan de Laagspanningsrichtlijn 2006/95/EG en EC and Verordening(en) voor uitvoering van Richtlijn 2009/125/EG.

Communicatie- of draadloze RF-producten voor de Europese markt voldoen aan de richtlijn R&TTE 1999/5/EG.

LET OP: Om te voldoen aan de Europese CE-norm, moet dit apparaat zijn geïnstalleerd in computerapparatuur die CE-gecertificeerd is voor de Klasse B-limieten. Alle kabels die worden

gebruikt om dit apparaat aan te sluiten, moeten zijn afgeschermd en geaard, en mogen niet langer dan 3 meter zijn. Gebruik met niet-gecertificeerde computers of incorrecte kabels kan leiden tot interferentie van andere apparaten of ongewenste effecten op het product.

AANPASSING: Alle wijzigingen of modificaties die niet uitdrukkelijk zijn goedgekeurd door Creative Technology Limited of een van de gelieerde maatschappijen, kunnen ertoe leiden dat de rechten van de gebruiker met betrekking tot garantie en vrijwaring vervallen.

Conformidade Europeia

Este produto está em conformidade com a seguinte regulamentação:

Directiva EMC 2004/108/EC.

Directiva RoHS 2011/65/UE.

Os produtos com ligação à rede destinados ao mercado europeu estão em conformidade com a directiva de baixa voltagem 2006/95/CE. Directiva de Implementação do(s) Regulamento(s) da Comissão 2009/125/CE.

Os produtos de comunicação/radiofrequência sem fios destinados ao mercado europeu estão em conformidade com a directiva R&TTE 1999/5/CE.

ATENÇÃO: De modo a cumprir com os requisitos da marca CE Europeia, este dispositivo deve ser instalado com equipamento informático com certificação CE que cumpra com os limites de Classe B limits. Todos os cabos usados para ligar este dispositivo devem ser blindados, ligados à terra e não devem exceder os 3m de comprimento. O funcionamento com computadores não certificados ou cabos incorrectos pode resultar em interferências em outros dispositivos ou provocar efeitos indesejados no produto.

MODIFICAÇÃO: Quaisquer alterações ou modificações que não sejam expressamente aprovadas pela Creative Technology Limited ou por uma das suas afiliadas, pode anular a garantia do utilizador e os direitos inerentes à mesma.

Europeisk efterlevnad

Denna produkt uppfyller följande:

EMC-direktivet 2004/108/EC.

RoHS Direktivet 2011/65/EU.

Produkter för den europeiska marknaden som drivs via elnätet uppfyller Lågspänningsdirektivet 2006/95/EC och Kommissionens regleringsimplementeringsdirektiv 2009/125/EG.

Trådlösa kommunikations/RF-produkter för den europeiska marknaden uppfyller R&TTE-direktivet 1999/5/EC.

WARNING: För att uppfylla CE-kraven i Europa måste denna produkt installeras med CE-certifierad datorutrustning som uppfyller gränsvärdena för klass B. Alla kablar som används för anslutning av denna produkt måste vara avskärmade, jordade och får inte vara längre än 3 m. Användning med icke certifierade datorer eller felaktiga kablar kan leda till interferens på annan utrustning eller oönskade effekter på produkten.

MODIFIERING: Alla förändringar och modifieringar som inte är uttryckligen tillåtna av Creative Technology limited eller något av dess filialföretag kan göra användarens garanti och garantirättigheter ogiltiga.

Europeisk samsvar

Dette produktet er i samsvar med følgende:

EMC-direktivet 2004/108/EC.

RoHS-Direktivet 2011/65/EU.

Elektriske produkter til det europeiske markedet er i samsvar med Lavspenningsdirektivet 2006/95/EC og Økodesigndirektivet 2009/125/EC.

Kommunikasjon/RF trådløse produkter til det europeiske markedet er i samsvar med R&TTEdirektivet

1999/5/EC.

ADVARSEL: For å overholde det europeiske CE-kravet må denne enheten installeres med CEsertifisert datautstyr som tilfredsstiller klasse B-grensene. Alle kabler som kobles til enheten må være skjermet, jordet og ikke lenger enn 3 m i lengde. Bruk av ikke-sertifiserte datamaskiner eller feil kabler kan føre til forstyrrelse av andre enheter eller uønsket effekt på produktet.

MODIFIKASJON: Eventuelle endringer eller modifikasjoner som ikke uttrykkelig er godkjent av Creative Technology Limited eller et av dets tilknyttede selskaper, kan ugyldiggjøre garantien eller garantirettighetene.

Overholdelse af Europæiske regler og standarder

Dette produkt overholder følgende:

EMC-direktivet 2004/108/EC.

RoHS-Direktivet 2011/65/EU.

Produkter til det Europæiske marked, skal overholde Lavspændingsdirektivet 2006/95/EC og Kommissionens forordninger for implementering af direktivet 2009/125/EF.

Kommunikations- / RF-trådløse produkter til det Europæiske overholder R&TTE-direktivet 1999/5/EC.

ADVARSEL: For at overholde Europe CE-kravet, skal denne enheden installeres med CE-certificeret computerudstyr, der opfylder klasse B-grænserne. Alle kabler der anvendes til at tilslutte enheden skal være skjærmede, jordforbundne og ikke længere end 3 m lange. Drift med ikke-certificerede computere og ukorrekte kabler kan medføre interferens for andre enheder eller uønskede effekter på produktet.

MODIFIKATION: Enhver ændring eller modifikation, der ikke er udtrykkeligt godkendt af Creative Technology Limited eller et associerede selskab, vil gøre brugerens garanti og garanterede rettigheder ugyldig.

Eurooppalainen yhdenmukaisuus

Tämä tuote täyttää seuraavat tuotemääritykset:

EMC-direktiivin 2004/108/EC.

RoHS-direktiivin 2011/65/EU.

Euroopan markkinoiden verkkovirtaa käyttävät tuotteet ovat matalajännitedirektiivin 2006/95/EY mukaisia. Euroopan parlamentin ja neuvoston ohjaava direktiivi 2009/125/EY.

Euroopan markkinoiden tietoliikenne- ja langattomat radiotaajuustuotteet noudattavat R&TTEdirektiiviä 1999/5/EY.

VAROITUS: Jotta tämä laite noudattaisi Euroopan CE-vaatimuksia, tämä laite on asennettava CEsertifioituun

tietokoneeseen, joka noudattaa luokan B rajoituksia. Kaikki tämän laitteen liittämiseen käytetyt kaapelit tulee suojata ja maadoittaa eivätkä ne saa olla 3 m pidempiä. Luokan rajoituksia noudattamattoman tietokoneen tai vääränlaisten kaapeleiden käyttäminen voi aiheuttaa häiriöitä muihin laitteisiin tai häiritä itse laitteen toimintaa.

MUOKKAUKSET: Muutokset tai muokkaukset, joita Creative Technology Limited tai sen tytäryhtiöt eivät nimenomaisesti ole hyväksyneet, voivat mitätöidä tuotteelle annettun takuun.

Evropská shoda

Tento výrobek splňuje následující směrnice:

Směrnice EMC 2004/108/EC.

Směrnice RoHS 2011/65/EU.

Výrobky napájené z elektrické zásuvky pro evropský trh splňují směrnici o nízkém napětí 2006/95/EC a směrnici komise 2009/125/EC o zavázení predpisu.

Komunikacní / vysokofrekvenční bezdrátové výrobky pro evropský trh splňují směrnici R&TTE 1999/5/EC.

UPOZORNENÍ: Aby toto zařízení splnovalo evropský požadavek CE, musí být nainstalováno s počítačovým vybavením s certifikátem CE, které splňuje limity pro zařízení třídy B. Veškeré kabely používané pro připojení tohoto zařízení musí být stíněné, uzemněné a nesmí být delší než 3 metry. Při používání s necertifikovanými počítači nebo nesprávnými kabely může dojít k rušení jiných zařízení nebo k nežádoucím vlivům na produkt.

ÚPRAVY: Jakékoli změny nebo úpravy, které nebyly vyslovene schváleny společností Creative Technology Limited nebo některou z jejích dceřiných společností, mohou způsobit propadnutí záruky uživatele a záručních práv.

Zgodnosc z przepisami europejskimi

Urządzenie jest zgodne z

dyrektywa EMC 2004/108/EC.

Dyrektywa RoHS 2011/65/UE.

Urządzenia zasilane z sieci elektrycznej przeznaczone na rynek europejski musza byc zgodne z dyrektywa dotyczaca urzadzen niskonapieciowych 2006/95/EC oraz z dyrektywa wdrazajaca komisji regulacyjnej 2009/125/WE.

Urządzenia komunikacyjne / bezprzewodowe wykorzystujące transmisję radiową przeznaczone na rynek europejski spełniają warunki dyrektywy RTTE 1999/5/EC.

UWAGA: Aby uzyskać zgodność z wymogami europejskiej normy CE urządzenie musi być zainstalowane wraz ze sprzętem komputerowym mającym certyfikat CE z ograniczeniami klasy B.

Wszystkie przewody używane do podłączenia niniejszego urządzenia musza być ekranowane, uziemione i nie dłuższe niż 3 metry. Użytkowanie z komputerami nie posiadającymi certyfikatów lub wykorzystanie niewłaściwych przewodów może powodować zakłócenia pracy innych urządzeń lub opisywanego urządzenia.

MODYFIKACJE: Dokonanie jakichkolwiek zmian lub modyfikacji, na które firma Creative Technology Limited lub spółki z nią stowarzyszone nie udzielają wyraznej zgody, może doprowadzić do unieważnienia praw gwarancji i rejokmi użytkownika.

Соответствие европейским нормам

Данное изделие соответствует следующим стандартам:

EMC Директива 2004/108/EC.

RoHS директива 2011/65/EU.

Продукция с питанием от сети, поставляемая на европейский рынок, соответствует Директиве по низковольтному оборудованию 2006/95/EC и Имплементирующей директиве постановления (-й) комиссии 2009/125/EC.

Коммуникационное/радио- беспроводное оборудование, поставляемое на европейский рынок, соответствует Директиве по окончному радио- и телекоммуникационному оборудованию 1999/5/EC.

ВНИМАНИЕ! Для обеспечения соответствия европейским требованиям CE, это устройство должно устанавливаться с компьютерным оборудованием, сертифицированным по стандарту CE и удовлетворяющим нормам класса B. Все кабели, используемые для подключения данного устройства, должны быть экранированы, заземлены и иметь длину не более 3 м. Работа с несертифицированными компьютерами или неподходящими кабелями может привести к возникновению помех другим устройствам или негативному влиянию на работу самого изделия.

ИЗМЕНЕНИЯ КОНСТРУКЦИИ Любые изменения конструкции, на которые не было получено прямое разрешение компании Creative Technology Limited или ее дочерней компании, может привести к аннуляции гарантии и связанных с нею прав.

Európai megfeleloség

Ez a termék megfelel a következoknek:

2004/108/EGK sz., az elektromágneses összeférhetoségre. 2011/65/EU, RoHS.

Az Európa területére szánt hálózati termékek megfelelnek az alacsony feszültségre vonatkozó

2006/95/EC irányelvnek.

Az irányelvet 2009/125/EK végrehajtó bizottsági rendeletek.

Az Európa területére szánt, távközlési, illetve rádiófrekvenciás vezeték nélküli termékek megfelelnek a rádiós távközlő végberendezésekre vonatkozó 1999/5/EK irányelvnek.

FIGYELEM! Az európai CE követelmények teljesítéséhez ezt a készüléket a B kategóriájú értékeknek megfelelő, CE minősítésű számítógéppel együtt kell telepíteni. A készülék csatlakoztatására használt valamennyi kábelnek árnyékoltnak és földeltnek kell lennie, továbbá hosszúsága nem haladhatja meg a 3 métert. A nem hitelesített számítógépekkel vagy helytelen kábelekkel való használat más készülékek zavarását vagy a termék nem kívánatos befolyásolását okozhatja.

MÓDOSÍTÁS: Minden módosítás vagy változtatás, amit kifejezetten nem hagyott jóvá a Creative Technology Limited vagy valamelyik leányvállalata, érvénytelenítheti a készülék garanciáját és felhasználó garanciális jogait.

Ευρωπαϊκή συμμόρφωση

Το παρόν προϊόν συμμορφώνεται με τα παρακάτω:

Οδηγία ΗΜΣ 2004/108/ΕΚ.

Οδηγία RoHS 2011/65/ΕΕ.

Τα προϊόντα που λειτουργούν με ρεύμα για την ευρωπαϊκή αγορά συμμορφώνονται με την Οδηγία περί χαμηλής τάσης 2006/95/ΕΚ και τους κανονισμούς της επιτροπής που υλοποιούν την οδηγία 2009/125/ΕΚ.

Τα ασύρματα προϊόντα επικοινωνιών / RF για την ευρωπαϊκή αγορά συμμορφώνονται με την οδηγία R&TTE 1999/5/ΕΚ.

ΠΡΟΣΟΧΗ: Για τη συμμόρφωση με τις απαιτήσεις του ευρωπαϊκού CE, αυτή η συσκευή θα πρέπει να εγκατασταθεί σε εξοπλισμό υπολογιστή με πιστοποίηση CE ο οποίος πληροί τα όρια της κατηγορίας Β. Όλα τα καλώδια που χρησιμοποιούνται για τη σύνδεση της συσκευής θα πρέπει να είναι θωρακισμένα, γειωμένα και να μην υπερβαίνουν σε μήκος τα 3μ. Η λειτουργία με μη πιστοποιημένους υπολογιστές ή λάθος καλώδια μπορεί να οδηγήσει σε παρεμβολές με άλλες συσκευές ή ανεπιθύμητες επιδράσεις στο προϊόν.

ΤΡΟΠΟΠΟΙΗΣΗ: Οι όποιες αλλαγές ή τροποποιήσεις που δεν έχουν εγκριθεί ρητά από την Creative Technology Limited ή κάποια από τις θυγατρικές της ενδέχεται να ακυρώσουν την εγγύηση του χρήστη και τα δικαιώματα που απορρέουν από αυτήν

Europos Sąjungos atitiktis

Šis gaminys atitinka šiuos reikalavimus:

„Elektromagnetines atitikties“ („EMC“) direktyva 2004/108/EC.

RoHS direktyva 2011/65/ES.

Produktai, kurie veikia maitinami iš elektros tinklo, skirti Europos rinkai, atitinka Žemos įtampos direktyva 2006/95/EB.

Komisijos reglamentas(-ai) dėl Direktyvos 2009/125/EB įgyvendinimo.

Europos Sąjungos rinkai skirti ryšiu / radijo dažniu bevieliai gaminiai atitinka 1999/5/EB direktyva „Dėl radijo ryšio inžinieriu ir telekomunikacijų galiniu inžinieriu bei abipusio ju atitikties pripažinimo“.

ATSARGIAI: Tam, kad šis prietaisas atitiktų Europos Sąjungos „CE“ reikalavimus, jis turi būti idiegtas į „CE“ sertifikuota kompiuterine iranga, atitinkancia „B“ klases ribas. Visi su šiuo prietaisu naudojami laidai turi būti ekranuoti, izeminti ir neviršyti 3 m ilgio. Nesertifikuotu kompiuteriu ar netinkamu laidu naudojimas gali tapti trikdžiu kitiems prietaisams arba nepageidaujamu šio gaminio veikimo pasekmiu priežastimi.

MODIFIKAVIMAS: Bet kokie pakeitimai ar modifikavimai neturint aiškiai patvirtinto „Creative Technology Limited“ ar vienos iš su ja susijusių bendroviu leidimo gali panaikinti vartotojo garantija ir garantijos teises.

Dodržiavanie predpisov Európskej únie

Tento výrobok splňa nasledujúce normy:

Smernica EMC 2004/108/ES.

Smernica RoHS 2011/65/EÚ.

Výrobky napájané zo siete určené na európsky trh sú v súlade so smernicou o harmonizácii právnych predpisov členských štátov týkajúcich sa elektrického zariadenia určeného na používanie v rámci určitých limitov napätia 2006/95/ES a s nariadeniami Komisie, ktorými sa vykonáva smernica 2009/125/ES.

Bezdrôtové komunikačné/RF výrobky určené na európsky trh sú v súlade so smernicou R&TTE 1999/5/ES.

VAROVANIE: Toto zariadenie musí byť nainštalované s počítačovým zariadením s certifikáciou CE, ktoré spĺňa limity triedy B, aby bolo v súlade s európskymi požiadavkami CE.

Všetky káble použité na pripojenie tohto zariadenia musia byť tienené, uzemnené a nie dlhšie ako 3 m.

Prevádzka pomocou necertifikovaných počítačov alebo nesprávnych káblov môže mať za následok rušenie iných zariadení alebo nežiaduce účinky na výrobok.

ÚPRAVY: Akékoľvek zmeny alebo úpravy, ktoré neboli výslovne odsúhlasené spoločnosťou Creative Technology Limited alebo jednou z jej sesterských spoločností, môžu zrušiť platnosť záruky a záručných práv používateľa.

Avrupa Uyumu

Bu ürün asagidakilere uygundur:

2004/108/EC EMC (Elektromanyetik Uyumluluk) Yönetmeliği.

2011/65/EC RoHS (Tehlikeli Maddelerin Kısıtlanması) Yönetmeliği

Avrupa piyasasına yönelik, elektrik şebekesi tarafından çalıştırılan ürünler 2006/95/EC Alçak Gerilim Yönetmeliği (LVD) ve 2009/125/EC Enerji ile İlgili Ürünlerin Çevreye Duyarlı Tasarımına İlişkin Yönetmelige uygundur.

Avrupa piyasasına yönelik İletim / RF kablosuz ürünleri Yönetmelik R&TTE 1999/5/EC ile uyumludur.

DIKKAT: Avrupa CE gereksinimleriyle uyumlu olması için bu cihazın, B Sınıfı sınırlarına uygun olan CE sertifikalı bilgisayar donanımları ile birlikte kurulması gerekir. Bu cihazı bağlamak için kullanılan tüm kabloların koruyuculu ve topraklanmış olması ve 3 metreden uzun olmaması gerekir. Sertifikalı olmayan bilgisayarlarla veya yanlış kablolarla birlikte kullanılması, diğer cihazların düzgün çalışmamasına veya üründe istenmeyen etkiler görülmesine neden olabilir.

DEĞİŞİKLİKLER: Creative Technology Limited veya bağlı şirketlerinden biri tarafından açıkça onaylanmamış tüm değişiklikler kullanıcının garanti ve teminat haklarını geçersiz kılabilir.

Waste Electrical and Electronic Equipment (WEEE) Symbol



The use of the WEEE Symbol indicates that this product may not be treated as household waste. By ensuring this product is disposed of correctly, you will help protect the environment. For more detailed information about the recycling of this product, please contact your local authority, your household waste disposal service provider or the shop where you purchased the product.

Symbole WEEE (Waste Electrical and-Electronic Equipment, Déchets électriques et d'équipement électronique)



L'utilisation du symbole WEEE indique que ce produit ne peut pas être traité comme des déchets ménagers. En veillant à une élimination correcte de ce produit, vous contribuez à la protection de l'environnement. Pour obtenir des informations plus détaillées sur le recyclage de ce produit, contactez votre administration locale, votre fournisseur de services d'élimination des déchets ménagers ou le magasin où vous avez acheté le produit.

Symbol pro odpadní elektrický a elektronický materiál (WEEE)



Použití symbolu WEEE označuje, že tento produkt nelze likvidovat jako domovní odpad. Správnou likvidaci tohoto produktu přispějete k ochraně životního prostředí. Podrobnější informace o likvidaci tohoto produktu vám podají místní úřady, společnost pro likvidaci komunálního odpadu nebo obchod, kde jste zboží zakoupili.

WEEE- (Waste Electrical and Electronic Equipment) Symbol



Durch Verwendung des WEEE-Symbols weisen wir darauf hin, dass dieses Produkt nicht als normaler Haushaltsmüll behandelt werden darf. Sie tragen zum Schutze der Umwelt bei, indem Sie dieses Produkt korrekt entsorgen. Genauere Informationen zum Recycling dieses Produkts erhalten Sie von Ihrer Stadtverwaltung, von Ihrem Müllabfuhrunternehmer oder im Laden, in dem Sie das Produkt erworben haben.

Symbol for affald af elektrisk og elektronisk udstyr (WEEE)



Brugen af WEEE-symbolet betyder, at dette produkt ikke må behandles som husholdningsaffald. Ved at sørge for korrekt bortskaffelse af produktet medvirker du til at beskytte miljøet. Du kan få flere oplysninger om genbrug af dette produkt hos de lokale myndigheder, dit renovationsselskab eller i forretningen, hvor du har købt produktet.

Σύμβολο Άχρηστου Ηλεκτρικού και Ηλεκτρονικού Εξοπλισμού (WEEE)



Η χρήση του συμβόλου WEEE δηλώνει ότι δεν μπορείτε να αντιμετωπίζετε αυτό το προϊόν ως οικιακό απόβλητο. Βεβαιώνοντας της κατάλληλη απόρριψη του προϊόντος αυτού, βοηθάτε στην προστασία του περιβάλλοντος. Για περισσότερες πληροφορίες σχετικά με την ανακύκλωση αυτού του προϊόντος, επικοινωνήστε με τις τοπικές αρχές, την υπηρεσία απόθεσης οικιακών απορριμμάτων ή το κατάστημα από όπου αγοράσατε το προϊόν.

Símbolo de residuos de aparatos eléctricos y electrónicos (RAEE)



El símbolo RAEE en un producto indica que éste no se puede eliminar como cualquier otro basura. Si garantiza la eliminación correcta del producto, ayudará a proteger el medio ambiente. Para obtener más informaciones sobre el reciclaje del mismo, póngase en contacto con las autoridades locales pertinentes, con el proveedor de servicios de recogida de basura o con el establecimiento donde adquirió el producto..

WEEE-merkintä (sähkö- ja elektroniikkalaiteromu)



WEEE-merkintä osoittaa, että tätä tuotetta ei voi käsitellä kotitalousjätteen tavoin. Kun huolehdit tämän tuotteen asianmukaisesta hävittämisestä, autat suojelemaan ympäristöä. Lisätietoa tämän tuotteen kierrättämisestä saat paikallisviranomaisilta, jätehuoltoyhtiöltäsi tai myymälästä, josta ostit tämän tuotteen.

Hulladék elektromos vagy elektronikus készüléket jelölő szimbólum



Ez a szimbólum azt jelöli, hogy a terméket nem szabad háztartási hulladékként kezelni. A hulladékká vált termék megfelelő elhelyezésével hozzájárul a környezet védelméhez. A termék újrafelhasználásával kapcsolatban a helyi szervekkel, a háztartási hulladékokat elszállító vállalatnál vagy a terméket értékesítő üzletben tájékozódhat.

Simbolo RAEE (Rifiuti Apparecchiature Elettriche ed Elettroniche)



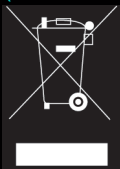
Il simbolo RAEE utilizzato per questo prodotto indica che quest'ultimo non può essere trattato come rifiuto domestico. Lo smaltimento corretto di questo prodotto contribuirà a proteggere l'ambiente. Per maggiori informazioni sul riciclaggio di questo prodotto, rivolgersi all'ufficio competente del proprio ente locale, alla società addetta allo smaltimento dei rifiuti domestici o al negozio dove è stato acquistato il prodotto.

Panaudotos elektros ir elektronines irangos (WEEE) simbolis



WEEE simbolis nurodo, kad šis produktas negali būti išmestas kaip buitines atliekos. Teisingai utilizuodami, jusapsaugosite aplinką. Papildomos informacijos, kaip utilizuoti tokius produktus, teiraukitės savivaldybėje, atlieku utilizavimopaslaugas teikiančiose arba tokiais produktais prekiaujančiose monese.

Het symbol voor Afgedankte elektrische en elektronische apparatuur (Waste Electrical and Electronic Equipment -WEEE)



Het gebruik van het symbool voor Afgedankte elektrische en elektronische apparatuur (WEEE) geeft aan dat dit product niet mag worden behandeld als huishoudelijk afval. Doo ervoor te zorgen dat dit product op de juiste wijze wordt afgedankt, deaagt u bij aan de bescherming van het milieu. Raadpleeg voor meer gedeailleerde informatie over hergebruik van dit product uw plaatselijke overheid, de dienst voor huishoudelijk afval of de winkel waar u dit product hebt aangeschaft.

WEEE-symbolet (Waste Electrical and Electronic Equipment)



Bruken av WEEE-symbolet indikerer at dette produktet ikke kan behandles som husholdningsavfall. Du vil bidra til å beskytte miljøet ved å sørge for at dette produktet blir avhendet på en forsvarlig måte. Ta kontakt med kommunale myndigheter, renovasjonsselskapet der du bor eller forretningen hvor du kjøpte produktet for å få mer informasjon om resirkulering av dette produktet.

Symbol odpadów pochodzących ze sprzętu elektrycznego i elektronicznego (WEEE - ang. Waste Electrical and Electronic Equipment)



Uzycie symbolu WEEE oznacza że niniejszy produkt nie może być traktowany jako odpad domowy. Zapewniając prawidłwą utylizację pomagasz chronić środowisko naturalne. W celu uzyskania bardziej szczegółowych informacji dotyczących recyklingu niniejszego produktu należy skontaktować się z przedstawicielem władz lokalnych, dostawcą usług utylizacji odpadów lub sklepem, gdzie nabyto produkt.

Símbolo referente aos desperdícios provenientes de equipamentos eléctricos e electrónicos (WEEE -Waste Electrical and Electronic Equipment)



A utilização do símbolo WEEE (Waste Electrical and Electronic Equipment) indica que este produto não deverá ser tratado como lixo doméstico. Ao garantir que este produto é destruído de forma correcta, estará a contribuir para a protecção do meio ambiente. Para obter mais informações sobre a reciclagem deste produto, contacte as autoridades locais os serviços de tratamento de resíduos domésticos da sua área de residência ou o estabelecimento comercial onde adquiriu o produto.

Symbol pre odpadový elektrický a elektronický materiál (WEEE)



Symbol WEEE označuje, že tento produkt nie je možné likvidovať ako domový odpad. Správnu likvidáciu tohto produktu prispejete k ochrane životného prostredia. Podrobnejšie informácie o likvidácii tohto produktu vám podajú miestne úrady, spoločnosť pre likvidáciu komunálneho odpadu alebo obchod, kde ste tovar kúpili.

Symbol för avfall från elektrisk och elektronisk utrustning (WEEE)



Märkning med WEEE-symbolen visar att produkten inte får behandlas som hushållsavfall. Genom att slänga den här produkten på rätt sätt bidrar du till att skydda miljön. Mer information om återvinning av produkten kan du få av de lokala myndigheterna, din renhållningsservice eller i affären där du köpte produkten.

WEEE DIRECTIVE 2002/96/EC



FOR REMOVABLE BATTERY (Li-ion/polymer, button/coin cells, cylindrical cells)

This product contains one or more of the above removable batteries. The crossed-out wheeled bin symbol indicates that the battery in this product should not be treated as unsorted municipal waste upon reaching its end of life. Instead it should be taken to separate collection and recycling schemes. Batteries containing heavy metal content will have a two-letter symbol for the chemical under the crossed-out wheeled bin symbol, 'Cd' stands for cadmium, 'Pb' for lead, and 'Hg' for mercury. You can help the environment and avoid public health hazards by recycling the battery at an authorized recycling facility or the place of purchase. To find the nearest authorized recycle centre contact your local authority. Instructions for removing the battery can be found in the product user manual. The instructions should be followed carefully before attempting to remove the battery.

FOR INTEGRATED BATTERY

This product contains a Lithium ion/polymer battery that should only be removed by an authorized recycling centre. By recycling this product at your local authorized recycling centre or the place of purchase, the battery will be removed and recycled separately.

Directive sur les piles 2006/66/CE



POUR LES PILES AMOVIBLES (Li-ion/polymère, boutons, cellules cylindriques)

Ce produit contient une ou plusieurs des piles amovibles mentionnées ci-dessus. Le symbole représentant une poubelle à roulettes barrée d'une croix signifie que la pile contenue dans le produit ne doit pas être traitée comme un déchet classique une fois son cycle de vie terminé. Elle doit faire l'objet d'une collecte et d'un recyclage à part. Pour les piles contenant un métal lourd, le symbole chimique à deux lettres est ajouté sous celui de la poubelle à roulettes barrée : « Cd » désigne le cadmium, « Pb », le plomb et « Hg », le mercure. Vous pouvez contribuer au respect de l'environnement et à la protection de la santé publique en confiant la pile usagée à une usine de recyclage ou en la rapportant au magasin dans lequel vous l'avez achetée. Pour trouver le centre de recyclage agréé le plus proche de chez vous, contactez les autorités locales. Les instructions relatives à la dépose de la pile figurent dans le manuel de l'utilisateur du produit. Veuillez en prendre connaissance avant de tenter de déposer la pile.

POUR LES PILES INTÉGRÉES

Ce produit contient une pile lithium-ion/polymère dont la dépose doit uniquement être effectuée par un centre de recyclage agréé. En confiant ce produit au centre de recyclage agréé local ou en le rapportant au magasin d'achat, vous avez la garantie que la pile sera déposée et recyclée de façon séparée.

SMERNICE PRO BATERIE 2006/66/EC



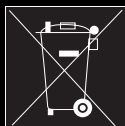
VYJÍMATELNÁ BATERIE (Li-ion/polymerová, knoflíkové/mincové články, válečkové články)

Tento výrobek obsahuje jednu nebo více výše uvedených vyjímatelných baterií. Symbol přeškrtnuté popelnice s kolečky ukazuje, že po skončení životnosti nesmí být s baterií v tomto výrobku nakládáno jako s netříděným komunálním odpadem. Místo toho musí být odevzdána do odděleného sberu k recyklaci. Na bateriích obsahujících těžké kovy je poc symbolem přeškrtnuté popelnice s kolečky uvedeno dvojpísmenné označení chemické látky. „Cd“ označuje kadmium, „Pb“ označuje olovo a „Hg“ označuje rtuť. Odevzdáním baterie autorizovanému recyklačnímu zařízení nebo na místě zakoupení můžete pomoci chránit životní prostředí a zabránit ohrožení zdraví veřejnosti. Informace o nejbližším autorizovaném recyklačním středisku vám poskytne místní úřad. Pokyny pro vyjmutí baterie jsou uvedeny v uživatelské příručce k výrobku. Před pokusem o vyjmutí baterie je třeba tyto pokyny pečlivě dodržet.

ZABUDOVANÁ BATERIE

Tento výrobek obsahuje lithium-ionovou/polymerovou baterii, kterou může vyjmout pouze autorizované recyklační středisko. Odevzdáte-li tento výrobek místnímu autorizovanému recyklačnímu středisku nebo na místě zakoupení, baterie bude vyjmuta a oddělene recyklována.

Batterierichtlinie 2006/66/EG



FÜR AUSTAUSCHBARE BATTERIEN (Li-Ionen/Polymer, Knopfzellen, Zylinderzellen)

Dieses Produkt enthält mindestens eine der folgenden austauschbaren Batterien. Die durchgestrichene Mülltonne zeigt an, dass gebrauchte Batterien nicht über den Hausmüll entsorgt werden dürfen. Stattdessen sollten sie zu einer Sammelstelle für Batterie-Entsorgung und - Recycling gebracht werden. Batterien, die Schwermetall enthalten, werden durch zwei Buchstaben, die für das entsprechende chemische Element stehen, unter der durchgestrichenen Mülltonne gekennzeichnet. 'Cd' steht für Cadmium, 'Pb' für Blei und 'Hg' für Quecksilber. Helfen Sie, die Umwelt zu schonen und Gesundheitsrisiken vorzubeugen, indem Sie die Batterien in einer zugelassenen Recycling-Anlage oder bei Ihrem Händler entsorgen. Wenden Sie sich an die lokale Behörde, um Auskunft über die nächstgelegene Recycling-Anlage zu erhalten. Anweisungen zum Entfernen von Batterie finden Sie im Benutzerhandbuch für dieses Produkt. Lesen Sie die Anweisungen genau durch, bevor Sie die Batterien entfernen.

FÜR INTEGRIERTE BATTERIEN

Dieses Produkt kann Lithium-Ionen- oder Polymer-Batterien enthalten, die ausschließlich durch Mitarbeiter einer zugelassenen Recycling-Anlage entfernt werden dürfen. Wird das Produkt in Ihrer lokal zugelassenen Recycling-Anlage oder bei Ihrem Händler entsorgt, werden die Batterien entfernt und separat recyclet.

Batteridirektivet 2006/66/EC



FOR FLYTBARE BATTERI (Li-ion/polymer, knap-/møntceller, cylindriske celler)

Dette produkt indeholder en eller flere af de ovenfor nævnte batterier. Symbolet med overstreget skraldespand på hjul indikerer at batteriet i dette produkt ikke må behandles som usorteret husholdningsaffald, når de ikke længere bruges. I stedet bør tages ud til separat indsamlings- og genbrugsprogrammer. Batterier der indeholder tungmetal vil have et symbol på bogstaver for kemikaliet under symbolet med overstreget skraldespand på hjul. 'Cd' står for cadmium, 'Pb' for bly og 'Hg' for kviksølv. Du kan hjælpe miljøet og den offentlige sundhed ved at genbruge batteriet på en godkendt genbrugsplads eller på købsstedet. Kontakt de lokale myndigheder for at finde den nærmeste genbrugsplads. Vejledning i at fjerne batteriet kan findes i produktets brugervejledning. Vejledninger skal følges nøje indern batteriet søges fjernet.

FOR INDBYGGET BATTERI

Dette produkt indeholder et Litium-ion-/polymerbatteri, der kun bør fjernes af et autoriseret genbrugscenter. Ved at genbruge dette produkt på det lokale godkendte genbrugscenter eller på købsstedet, vil batteriet blive fjernet og genbrugt separat.

Οδηγία μπαταριών 2006/66/EK



ΓΙΑ ΑΦΑΙΡΟΥΜΕΝΗ ΜΠΑΤΑΡΙΑ (ίόντων λιθίου/πολυμερούς, μπαταρίες κουμπιά, κυλινδρικές)

Αυτό το προϊόν περιέχει μία ή περισσότερες από τις αφαιρούμενες μπαταρίες που αναφέρονται παραπάνω. Το σύμβολο με το διαγραμμένο κάδο υποδεικνύει πως η μπαταρία σε αυτό το προϊόν δεν θα πρέπει να αντιμετωπιστεί μαζί με τα μη ταξινομημένα απορρίμματα στο τέλος της ζωής της. Αντίθετα, θα πρέπει να μεταφερθεί σε ξεχωριστές εγκαταστάσεις συλλογής και ανακύκλωσης. Οι μπαταρίες που περιέχουν βαρέα μέταλλα έχουν ένα σύμβολο που αποτελείται από τα δύο γράμματα του χημικού στοιχείου κάτω από το σύμβολο του διαγραμμένου κάδου. Το 'Cd' υποδεικνύει το κάδμιο, το 'Pb' το μόλυβδο και το 'Hg' τον υδράργυρο. Μπορείτε να βοηθήσετε το περιβάλλον και να αποφύγετε τον κίνδυνο για τη δημόσια υγεία ανακυκλώνοντας τις μπαταρίες σε μια εξουσιοδοτημένη εγκατάσταση ανακύκλωσης ή στο κατάστημα αγοράς. Για να βρείτε το πλησιέστερο εξουσιοδοτημένο κέντρο ανακύκλωσης, επικοινωνήστε με τις τοπικές αρχές. Οδηγίες για την αφαίρεση της μπαταρίας υπάρχουν στο εγχειρίδιο χρήστη του προϊόντος. Θα πρέπει να ακολουθήσετε προσεκτικά τις οδηγίες πριν να επιχειρήσετε να αφαιρέσετε τη μπαταρία.

ΓΙΑ ΕΝΣΩΜΑΤΩΜΕΝΗ ΜΠΑΤΑΡΙΑ

Αυτό το προϊόν περιέχει μια μπαταρία ιόντων λιθίου/πολυμερούς που θα πρέπει να αφαιρεθεί μόνο από ένα εξουσιοδοτημένο κέντρο ανακύκλωσης. Με την ανακύκλωση αυτού του προϊόντος στο πλησιέστερο εξουσιοδοτημένο κέντρο ανακύκλωσης ή στο κατάστημα αγοράς, η μπαταρία θα αφαιρεθεί και θα ανακυκλωθεί ξεχωριστά.

Directiva sobre pilas y baterías 2006/66/CE



PARA BATERÍAS DESECHABLES (Ion-litio/litio-polímero, pilas botón/moneda, pilas cilíndricas)

Este producto contiene una o más de las pilas aquí mencionadas. El símbolo del cubo de basura con ruedas tachado indica que la pila de este producto no debe tratarse como residuos urbanos sin clasificar al alcanzar el fin de su vida. En cambio, se debe separar para su recogida y reciclaje. Las pilas con contenido de materiales pesados tienen un símbolo de dos letras para los productos químicos debajo del símbolo del cubo de basura; con ruedas tachado. 'Cd' significa cadmio, 'Pb' plomo y 'Hg' mercurio. Podrá ayudar al medio ambiente y evitar riesgos para la salud pública reciclando la pila en una instalación de reciclaje autorizada o en el lugar donde la adquirió. Para encontrar el centro de reciclaje autorizado más próximo, póngase en contacto con las autoridades locales. En el manual de usuario del producto encontrará instrucciones para la extracción de la pila. Antes de intentar extraer la pila lea atentamente las instrucciones.

PARA BATERÍA INTEGRADA

Este producto contiene una pila de ión litio/polímero que debe extraerse en un centro de reciclaje autorizado. Al reciclar este producto en el centro de reciclaje autorizado local o en el lugar donde la adquirió, la pila se extraerá y se reciclará por separado.

AKKUDIREKTIIVI 2006/66/EC



IRROTETTAVALLE PARISTOLLE (Li-ion/polymeeri, nappiparistot, pyöreät paristot)

Tämä tuote sisältää yhden tai useamman yllä mainituista irrotettavista paristoista.

Roskakorisymbolin päällä oleva rasti ilmaisee, että tämän tuotteen akkua ei saa hävittää käyttöön lopulla kotitalousjätteen mukana. Se on vietävä erilliseen keräyspisteeseen.

Raskasmetalleja sisältävät akut on merkitty kaksikirjaimisella kemikaalitunnuksella, joka näkyy roskakorisymbolin alla. Cd tarkoittaa kadmiumia, Pb lyijyä ja Hg elohopeaa. Voit suojella ympäristöä ja ehkäistä yleisiä terveysriskejä viemällä akun kierrätyspisteeseen tai ostopaikkaan. Jos et tiedä lähimmän kierrätyskeskuksen sijaintia, pyydä lisätietoja paikallisilta viranomaisilta. Tuotteen käyttöoppaassa on akun vaihtamisen ohjeet. Lue ohjeet huolellisesti, ennen kuin vaihdat akun.

Kiinteä akku

Tässä tuotteessa voi olla litiumioni- tai polymeeriakku, ja tuote on vietävä kierrätyskeskukseen akun irrottamista varten. Kun viet tuotteen paikalliseen kierrätyskeskukseen tai ostopaikkaan, akku irrotetaan ja kierrätetään erikseen muusta jätteestä.

2006/66/EK AKKUMULÁTOR IRÁNYELV



ELTÁVOLÍTHATÓ AKKUMULÁTOROK (Li-ion/polimer, gomb-, hengeres akkumulátor)

Ez a termék tartalmaz egyet vagy többet a fent megjelölt eltávolítható akkumulátorok közül. Az áthúzott kerek szeméttároló szimbólum azt jelzi, hogy az ebben a termékben található akkumulátort életciklusa végén tilos nem szelektív lakossági hulladékként kezelni. Ellenkezőleg, kezelése szelektív gyűjtőhelyet és újrahasznosítási rendszert igényel. A nehézfémeket tartalmazó akkumulátorok egy két betűs szimbólummal rendelkeznek az áthúzott kerek szeméttároló szimbólum alatt, így jelölve azt a vegyi anyagot, amit tartalmaznak. 'Cd' jelzi a kadmiumot, 'Pb' az ólmot és 'Hg' a higanyt. Nem csupán a környezet károsítása, de a közegészségügyi kockázat is elkerülhető, ha az akkumulátort egy hivatalos újrahasznosító helyen, vagy a vásárlás helyszínén adja le. A legközelebbi hivatalos újrahasznosítási központtal kapcsolatban keresse fel az illetékes helyi hatóságokat. Az akkumulátor eltávolításával kapcsolatos utasítások a felhasználói kézikönyvben találhatók. Gondosan olvassa végig az utasításokat az akkumulátor kivétel előtt.

Beépített akkumulátor

A termék tartalmazhat lítium-ion/polimer akkumulátort, amelyet kizárólag egy hivatalos újrahasznosítási központban lehet eltávolítani. A hivatalos újrahasznosító helyen, vagy a vásárlás helyszínén újrafelhasznált termék esetében az akkumulátor eltávolítása és újrafelhasználása külön történik.

Direttiva sulle batterie 2006/66/CE



PER LE BATTERIE RIMUOVIBILI (litio-ione/polimero, bottone, celle cilindriche)

Questo prodotto contiene una o più delle seguenti tipologie di batteria. Il simbolo contenitore porta-rifiuti sbarrato indica che la batteria di questo prodotto non può essere smaltita come rifiuto nei raccoglitori generici municipali quando non viene più utilizzata. Lo smaltimento deve essere effettuato in base a una raccolta separata e a precisi schemi di riciclaggio. Le batterie che contengono metalli pesanti avranno un simbolo composto da due lettere (corrispondenti al tipo di metallo di cui sono costituite) sotto il simbolo del contenitore sbarrato. "Cd" sta per "cadmio", "Pb" sta per "piombo" e "Hg", sta per "mercurio". Per rispettare l'ambiente ed evitare di mettere a rischio la salute pubblica si raccomanda di riciclare la batteria presso i centri autorizzati al riciclaggio o presso il rivenditore del prodotto. Per informazioni sui centri autorizzati al riciclaggio più vicini, contattare le autorità locali. Le istruzioni per la rimozione della batteria si trovano all'interno del Manuale dell'utente del prodotto. È necessario attenersi scrupolosamente a tali istruzioni prima di tentare di rimuovere la batteria.

PER LE BATTERIE INTEGRATE

Il prodotto contiene una batteria agli ioni di litio/polimeri che può essere rimossa solo presso un centro di riciclaggio autorizzato. Presso il centro autorizzato al riciclaggio o presso il rivenditore, la batteria verrà rimossa e riciclata separatamente.

DIREKTYVA DEL BATERIJŲ 2006/66/EB



IŠIMAMOMS BATERIJOMS (licio jonų / polimero, monetos pavidalo baterijoms, cilindrinėms baterijoms)

Šiame produkte yra viena ar daugiau iš aukščiau išvardintų išimamų baterijų. Perbraukto: šiukšlinės simbolis rodo, kad šiame produkte esančios baterijos nederėtų laikyti nerušiuojama atlieka, kai ateina laikas ją išmesti. Todėl jos turėtų būti renkamos ir perdirbamos atskirai. Baterijos, kuriuose yra sunkiųjų metalų, bus pažymėtos dviem raidžių simboliu, atitinkanciu cheminei elementui, kuris bus po perbraukta šiukšlinės. „Cd“ yra kadmio, „Pb“ – švinas, o „Hg“ – gyvsidabris. Perdirbdami baterijas igaliotose perdirbimo imonėse arba pardavimo vietose, galite padėti apsaugoti aplinką ir visuomenę nuo kenksmingo poveikio. Noredami rasti arčiausiai isikurusi igaliota perdirbimo centra, kreipkitės i vietos valdžios institucijas. Vartotojo vadove rasite nurodymus, kaip išimti baterija. Prieš bandant išimti baterija privalu laikytis nurodymu.

Integruotoji baterija

Šiame produkte gali būti licio jonų / polimeru baterija, kuria išimti gali tik igalioti perdirbimo centrai. Perdirbant šį produktą vietiniame igaliotame perdirbimo centre arba pirkimo vietoje baterija bus išimta ir perdirbta atskirai.

Richtlijn batterijen 2006/66/EG



VOOR VERWIJDERBARE BATTERLIJEN (Li-ion/polymeer, knoop/cel, cilindrische cellen)

Dit product bevat een of meer van de bovenstaande verwijderbare batterijen. Het pictogram van een afvalcontainer met een kruis erdoor geeft aan dat de batterij van dit product niet moet worden behandeld als huishoudelijk afval wanneer de batterij leeg is. De batterij moet apart worden ingezameld en gerecycled. Bij batterijen die zware metalen bevatten staat een pictogram met twee letters onder het pictogram van de afvalcontainer met een kruis erdoor. De letters geven de chemische stof aan. 'Cd' staat voor cadmium, 'Pb' staat voor lood en 'Hg' staat voor kwik. U kunt bijdragen aan de bescherming van het milieu en de volksgezondheid door de batterij in te leveren bij een geautoriseerd recyclebedrijf of bij de winkel waar u de batterij hebt gekocht. Neem contact op met de plaatselijke overheid om een geautoriseerd recyclecentrum in de buurt te vinden. Instructies voor het verwijderen van de batterij vindt u in de gebruikershandleiding van het product. U dient de instructies zorgvuldig door te lezen voordat u probeert de batterij te verwijderen.

VOOR INGEBOUWDE BATTERIJEN

Dit product bevat een Lithium-ion-polymeerbatterij. De batterij mag alleen door een geautoriseerd recyclecentrum worden verwijderd. Als u dit product inlevert bij een geautoriseerd recyclecentrum of bij de winkel waar u het product hebt gekocht, wordt de batterij verwijderd en apart gerecycled.

Batteridirektivet 2006/66/EC



FOR UTSKIFTBART BATTERI (li-ion/polymer, knapp/myntceller, sylindriske celler)

Dette produktet inneholder en eller flere av de ovennevnte utskiftbare batteriene. Symbole med en avfallsdunket som er kryssset over indikerer at batteriet i dette produktet ikke skal behandles som restavfall etter endt levetid. De bør i stedet leveres til separate gjenvinningsordninger. Batterier som inneholder tungmetaller vil ha et tosfiretsymbol for kjemikalien under avfallsdunken med kryss over. "Cd" står for kadmium, "Pb" for bly, og "Hg" for kvikksølv. Du kan hjelpe miljøet og unngå offentlige helsefarer ved å resirkulere batteriet på et godkjent gjenvinningsanlegg eller på kjøpsstedet. Kontakt kommunen for å finne det nærmeste autoriserte gjenvinningsanlegget. Instruksjoner for å ta ut batteriet finner du i produktets bruksanvisning. Instruksjonene bør følges nøye før du forsøker å fjerne batteriet.

FOR INTEGRERT BATTERI

Dette produktet inneholder et litium-ionbatteri/polymerbatteri som bare skal fjernes av et autorisert gjenvinningsanlegg. Når du resirkulerer produktet hos ditt lokale gjenvinningsanlegg eller kjøpsstedet, vil batteriet fjernes og resirkuleres separat.

Dyrektywa dotyczaca baterii i akumulatorów 2006/66/EC



DOTYCZY AKUMULATORÓW WYJMOWANYCH (litowo-jonowe/polimerowe, ogniwa płaskie, ogniwa podluzne)

Urządzenie jest wyposażone w jeden lub więcej z podanych akumulatorów. Symbol przekreślonego kosza na śmieci oznacza, że akumulator urządzenia po zużyciu nie może być wyrzucany z odpadami domowymi. Zamiast tego należy przekazać go do utylizacji i recyklingu. Akumulatory zawierające metale ciężkie oznaczone będą dwuliterowym symbolem chemicznym pod symbolem przekreślonego kosza na śmieci. 'Cd' oznacza kadm, 'Pb' ołów, a 'Hg' rtec. Oddając akumulatory do autoryzowanego punktu utylizacji lub do miejsca zakupu pomagasz chronić środowisko i zapobiegasz zagrożeniu zdrowia publicznego. Aby dowiedzieć się, gdzie znajdują się najbliższe autoryzowane punkty utylizacji, skontaktuj się z lokalnymi władzami. Instrukcje dotyczące wyjmowania akumulatora znajdują się w instrukcji obsługi urządzenia. Wyjmując akumulator należy uważnie przestrzegać tych instrukcji.

DOTYCZY AKUMULATORÓW WBUDOWANYCH

Urządzenie wyposażone jest w akumulator litowo-jonowy/polimerowy, który może być wymontowany tylko w autoryzowanym punkcie utylizacji. Jeśli urządzenie zostanie oddane do autoryzowanego punktu utylizacji lub do miejsca zakupu, akumulator zostanie wyjęty i zutylizowany osobno.

Diretiva sobre Baterias 2006/66/CE



PARA BATERIA REMOVÍVEL (Li-íon/polímero, pilhas tipo botão/moeda, pilhas cilíndricas)

Este produto contém um ou mais das baterias removíveis acima. O símbolo da lata de lixo com rodas e riscada por um X indica que a bateria neste produto não deve ser tratada como dejetos municipais após chegar ao fim da sua vida útil. Deverá ser levada para coleta separada e esquemas de reciclagem. Baterias que contêm metais pesados deverão ter um símbolo de duas letras para produtos químicos abaixo do símbolo da lata de lixo com rodas e atravessada por um X. "Cd" significa cádmio, "Pb" é chumbo e "Hg" mercúrio. Você pode ajudar o meio ambiente e evitar riscos à saúde pública ao reciclar baterias em um local autorizado para esse tipo de reciclagem, ou leva ao local onde foi comprada. Para encontrar o centro de reciclagem autorizado mais próximo, contate a autoridade local. Instruções para remover a bateria podem ser encontradas no manual do usuário do produto. As instruções devem ser seguidas com cuidado antes de se tentar retirar a bateria.

PARA BATERIA INTEGRADA

Este produto contém uma bateria de lítio íon-polímero que só deve ser removida por um centro de reciclagem autorizado. Ao reciclar este produto em um centro de reciclagem autorizado ou no local de compra, a bateria será removida e reciclada à parte.

Директива о батареях питания 2006/66/ЕС.



СЪЕМНЫЕ БАТАРЕИ ПИТАНИЯ (литий-ионные/полимерные, пуговичные/плоские и цилиндрические элементы питания)

В данном изделии используется одна или несколько съемных батарей вышеуказанного типа. Символ перечеркнутой мусорной корзины означает, что по истечении срока эксплуатации, используемая в данном изделии батарея не должна утилизироваться вместе с несортированным бытовым мусором. Такие батареи должны утилизироваться отдельно по специальным схемам. На батареях питания, содержащих тяжелые металлы, под символом перечеркнутой мусорной корзины наносится химический символ соответствующего элемента: Cd - кадмий, Pb - свинец Hg - ртуть. Вы можете оказать содействие в деле охраны окружающей среды и исключить возникновение угрозы здоровью людей, утилизировав батарею в специальных учреждениях или по месту ее приобретения. Чтобы найти ближайший сертифицированный центр по утилизации, свяжитесь с местными властями. Инструкции по извлечению батареи приводятся в руководстве по эксплуатации изделия. Эти инструкции следует неукоснительно соблюдать.

ВСТРОЕННЫЕ БАТАРЕИ ПИТАНИЯ

В данном изделии используется литий-ионная/полимерная батарея, которая может быть извлечена только в авторизованном центре по утилизации. При утилизации данного изделия в местном авторизованном центре по утилизации или по месту приобретения, батарея будет извлечена из устройства и утилизирована отдельно.

SMERNICA O BATÉRIÁCH 2006/66/ES



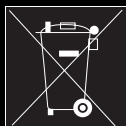
PRE VÝMENNÚ BATÉRIU (Li-ion/polymér, gombíkové batérie, tužkové batérie)

Tento produkt obsahuje jednu alebo viac z vyššie uvedených výmenných batérií. Symbol preciarknutého kontajnera s kolieskami znamená, že po dosiahnutí konca životnosti batérie sa batéria nesmie vyhadzovať do netriedeného komunálneho odpadu. Batériu treba odovzdať do špecializovaného zberného a recyklačného strediska. Batérie obsahujúce ťažké kovy majú pod symbolom preciarknutého kontajnera s kolieskami vyznačený dvoj písmenový názov chemikálie. „Cd“ znamená kadmium, „Pb“ znamená olovo a „Hg“ znamená ortuť. Tým, že použítu batériu odovzdáte na recykláciu v autorizovanom recyklačnom stredisku alebo v mieste predaja, pomôžete chrániť životné prostredie a zdravie verejnosti. Informácie o najbližšom autorizovanom recyklačnom stredisku získate na svojom miestnom úrade. Pokyny na vyberanie batérie nájdete v používateľskej príručke k výrobku. Skôr, než sa pokúsíte batériu vybrať, dôsledne si prečítajte tieto pokyny.

Pre vstavanú batériu

Tento výrobok môže obsahovať lítium-iónovú/polymérovú batériu, ktorú môžu z výrobku vybrať iba pracovníci autorizovaného recyklačného strediska. Recyklovaním tohto výrobku v miestnom autorizovanom recyklačnom stredisku alebo odovzdaním výrobku na recykláciu v mieste jeho nákupu zabezpečíte vybrať batérie a jej separátnu recykláciu.

Batteridirektivet 2006/66/EC.



FÖR LÖSTAGBART BATTERI (litiumjon/polymer, knapp/cellbatterier, cylinderformade cellbatterier)

Denna produkt innehåller ett eller flera av ovanstående löstagnbara batterier. Den överkorsade soptunnan betyder att batteriet i denna produkt inte får hanteras som osorterat kommunalt avfall i slutet av dess livstid. Istället ska det lämnas in separat för insamling och återvinning. Batterier som innehåller komponenter av tungmetall har en symbol med två bokstäver för kemikalien under den överkorsade soptunnan. "Cd" betyder kadmium, "Pb" bly och "Hg" kvicksilver. Du kan hjälpa miljön och undvika hälsorisker för allmänheten genom att lämna in batteriet på en godkänd återvinningsstation eller till inköpsstället. Kontakta de lokala myndigheterna för att hitta närmaste godkända återvinningsstation. Anvisningar om hur man tar ut batteriet finns i produktens användarmanual. Instruktionerna ska följas noggrant innan du försöker ta ut batteriet.

INBYGGDA BATTERIER

Denna produkt innehåller ett litiumjon/polymerbatteri som endast får tas ut av en godkänd återvinningsstation. Om du lämnar in denna produkt till den lokala godkända återvinningsstationen eller inköpsstället kommer batteriet att tas ut och återvinnas separat.

2006/66/EC Pili Yönetmeliği



ÇIKARILABİLİR PİLLER (Lityum-iyon/polimer, saat pilleri, silindirik hücreli piller)

Bu ürün yukarıda belirtilen çıkarılabilir pillerden birini veya daha fazlasını içerir. Üzerinde çarpı işareti olan tekerlekli çöp kutusu sembolü, bu üründe bulunan pil bittiginde ayrılmamış kentsel atık olarak işlem görmemesi gerektiğini ifade eder. Bunun yerine ayrı bir toplama yerine götürülmeli ve geri dönüşüm işlemine tabi tutulmalıdır. Ağır metal içeren pillerde üzerinde çarpı işareti bulunan tekerlekli çöp kutusu sembolünün altında söz konusu kimyasali temsil eden iki harfli bir sembol bulunmaktadır. 'Cd' kadmiyumu, 'Pb' kurşunu ve 'Hg' cıva'yı simgeler. Pili yetkili bir geri dönüşüm tesisine veya satın aldığınız yere götürerek, geri dönüşüm yoluyla çevreyi ve kamu sağlığını tehlikelere karşı koruyabilirsiniz. Size en yakın yetkili geri dönüşüm merkezini bulmak için yerel yetkili mercilere başvurun. Pilin çıkarılmasıyla ilgili talimatları ürüne ait kullanım kılavuzunda bulabilirsiniz. Pil çıkarma işlemini gerçekleştirmeden önce söz konusu talimatların dikkatle uygulanması gerekir.

ENTEGRE PİL İÇİN

Bu ürün, yalnızca yetkili bir geri dönüşüm merkezi tarafından çıkarılması gereken Lityum iyon/polimer pil içerir. Pil, yetkili yerel geri dönüşüm merkezinde veya bu ürünü satın aldığınız yerde geri dönüşüm sırasında çıkarılacak ve üründen ayrı olarak geri dönüştürülecektir.

Ukraine RoHS Statement

Обладнання відповідає вимогам Технічного регламенту щодо обмеження використання деяких небезпечних речовин в електричному та електронному обладнанні, затвердженого постановою Кабінету Міністрів України від 3 грудня 2008 № 1057

Notice for China

部件名称*	有毒有害物质或元素					
	铅 (Pb)	汞 (Hg)	镉 (Cd)	六价铬 (Cr ⁶⁺)	多溴联苯 (PBB)	多溴二苯醚 (PBDE)
显示面板	X	X	○	○	○	○
电源线/适配器	X	○	○	○	○	○
电池	X	○	○	○	○	○
遥控器 (含电池)	X	○	○	○	○	○
电路板组件	X	○	○	○	○	○

* "○": 表示该有害物质在该部件所有均质材料中的含量均在SJ/T 11363-2006标准规定的限量要求以下。
 * "X": 表示该有害物质至少在该部件的某一均质材料中的含量超过SJ/T 11363-2006标准规定的限量要求, 其原因目前业界还没有可替代的技术。
 * 各个型号的产品规格及所含部件可能有所不同, 应将产品中的任何可充电电池组脱离系统单独考虑, 因为电池的“环保使用期限”可能比整个系统的短, 一般为5年。

Notice for Korea

B 급 기기

(가정용 방송통신기자재)

이 기기는 가정용 (B 급) 전자파적합 기기로서 주로 가정에서 사용하는 것을 목적으로 하며, 모든 지역에서 사용할 수 있습니다.

Vietnam RoHS Statement

This product is in compliance with Circular 30/2011/TT-BCT of the Ministry of Trade of the Socialist Republic of Vietnam ("Circular"), it does not contain the following substances in concentration greater than the Maximum Limit value as specified in the Circular.

Substance	Maximum Limit (ppm) ^{1,2}
lead	1000
mercury	1000
cadmium	100
hexavalent chromium	1000
polybrominated biphenyls (PBB)	1000
polybrominated diphenyl ethers (PBDE)	1000

¹ Maximum Limit does not apply to applications exempted from the Circular.

² Maximum Limit refers to concentration by weight in homogeneous materials.

Notice for Japan

Recycling Rechargeable Battery



Lithium rechargeable battery is a resource that can be recycled.

- For recycling of embedded lithium rechargeable batteries inside Creative products, please do not attempt to remove the battery from the device. For recycling information and instruction, please go to Creative Media K K customer support at <http://jp.creative.com/support/contact/> (in Japanese)
- For recycling of replaceable (removable) lithium rechargeable batteries:



- It is recommended to remove the rechargeable batteries when they are fully discharged.
- Precaution needs to be taken on metal parts of the battery by covering them with isolation materials such as scotch tape.
- Refer to the homepage of JBRC for information on recycling and recovery of rechargeable batteries and supporting shops.
(URL: <http://www.jbrc.com/>)

Information in this document is subject to change without notice and does not represent a commitment on the part of Creative Technology Ltd. No part of this manual may be reproduced or transmitted in any form or by any means, electronic or mechanical, including photocopying and recording, for any purpose without the written permission of Creative Technology Ltd.

Copyright © 2013 Creative Technology Ltd. All rights reserved. Creative, the Creative logo, Sound Blaster, the Sound Blaster logo, Recon3D, Tactic3D, Creative ALchemy, CrystalVoice, SBX Pro Studio and the SBX logo are trademarks or registered trademarks of Creative Technology Ltd. in the United States and/or other countries. Windows, Windows 8, Windows 7, Windows Vista, Xbox and Xbox 360 are registered trademarks of Microsoft Corporation. PlayStation is a registered trademark and PS3 is a trademark of Sony Computer Entertainment Inc. Manufactured under license from Dolby Laboratories. Dolby and the double-D symbol are trademarks of Dolby Laboratories. Mac and Mac OS are registered trademarks of Apple Inc. All other trademarks are properties of their respective owners. All specifications are subject to change without prior notice. Use of this product is subject to a limited hardware warranty. Actual contents may differ slightly from those pictured. The software included in this packaging may not be used separately from the hardware. Before using the software, you must agree to be bound by the terms and conditions of the end user license agreement.