



- Measuring range 100mm – 1500mm
- Long mechanical life 100.000.000 cycles
- Excellent repeatability
- Very low temperature drift
- Infinite resolution

**Main Applications**

Plastic/ Metal Injection Moulding Machineries, Textile Machineries, Transfer/ Hydraulic Machineries, Marble/ Stone Machineries and General Automation Applications

**Specifications**

Mechanical stroke	100mm to 1500mm
Linearity	± %0,05
Resolution	Infinite
Resistance output	5 Kohm or 10 Kohm
Resistance tolerance	± %20
Load resistance	Min. 100 Kohm
Repeatability	≤ %0.01
Mechanical life	100 * 10 <sup>6</sup> Cycles
Displacement speed	≤ 1,5 m/s
Permissible applied voltage	28 VDC max
Recommended cursor current	< 1 µA
Electrical connections	4 Pole connector
Case dimensions	33mm x 33mm
Case material	Anodized aluminium
IP Degree	IP 40 - If mounted upside down IP 53
Working temperature	- 20 / + 80 °C
Mechanical fixing	Variable brackets

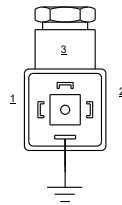
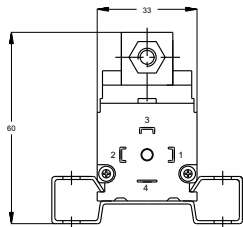
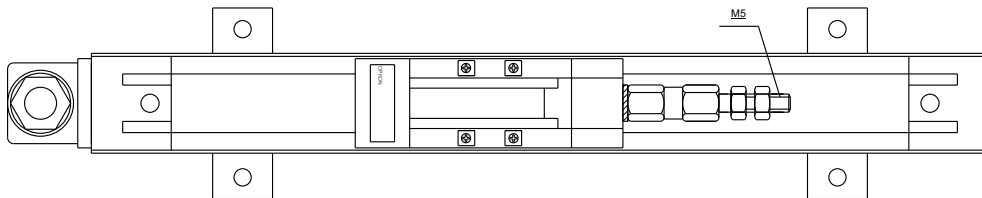
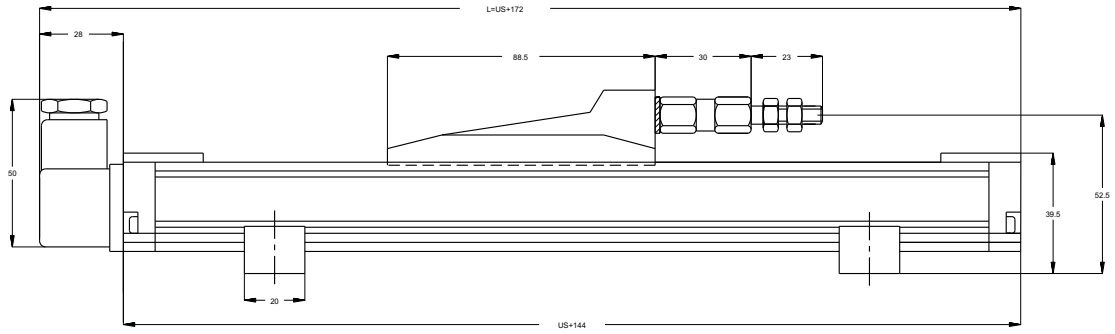
**Dimensions**

Model	LM	Mechanical stroke (MS)	Electrical measuring stroke (EMS)	Total lengt (L)
LPH	100	102mm	100mm	272mm
LPH	125	127 mm	125mm	297mm
LPH	130	132mm	130mm	302mm
LPH	150	152mm	150mm	322mm
LPH	175	177mm	175mm	347mm
LPH	200	202mm	200mm	372mm
LPH	225	227mm	225mm	397mm
LPH	250	252mm	250mm	422mm
LPH	275	277mm	275mm	447mm
LPH	300	302mm	300mm	472mm
LPH	325	327mm	325mm	497mm
LPH	350	352mm	350mm	522mm
LPH	375	377mm	375mm	547mm
LPH	400	402mm	400mm	572mm
LPH	450	452mm	450mm	622mm
LPH	500	502mm	500mm	672mm
LPH	550	552mm	550mm	722mm
LPH	600	602mm	600mm	772mm
LPH	650	652mm	650mm	822mm
LPH	700	702mm	700mm	872mm
LPH	750	752mm	750mm	922mm
LPH	800	802mm	800mm	972mm
LPH	850	852mm	850mm	1022mm
LPH	900	902mm	900mm	1072mm
LPH	1000	1002mm	1000mm	1172mm
LPH	1250	1252mm	1250mm	1422mm

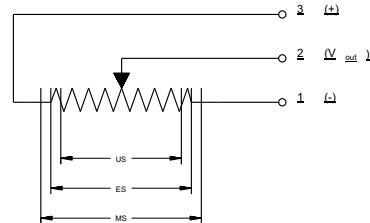
**Ordering Procedure**

LPH	1250	D	10K
<b>Model</b>	<b>Measurement Stroke</b>	<b>Linearity Class</b>	<b>Kohm Value</b>
		D: 0,05 %	5K: 5 KΩ 10K: 10 KΩ

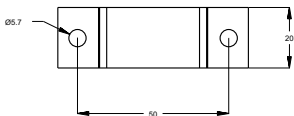
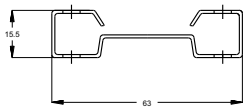
# DIMENSIONS



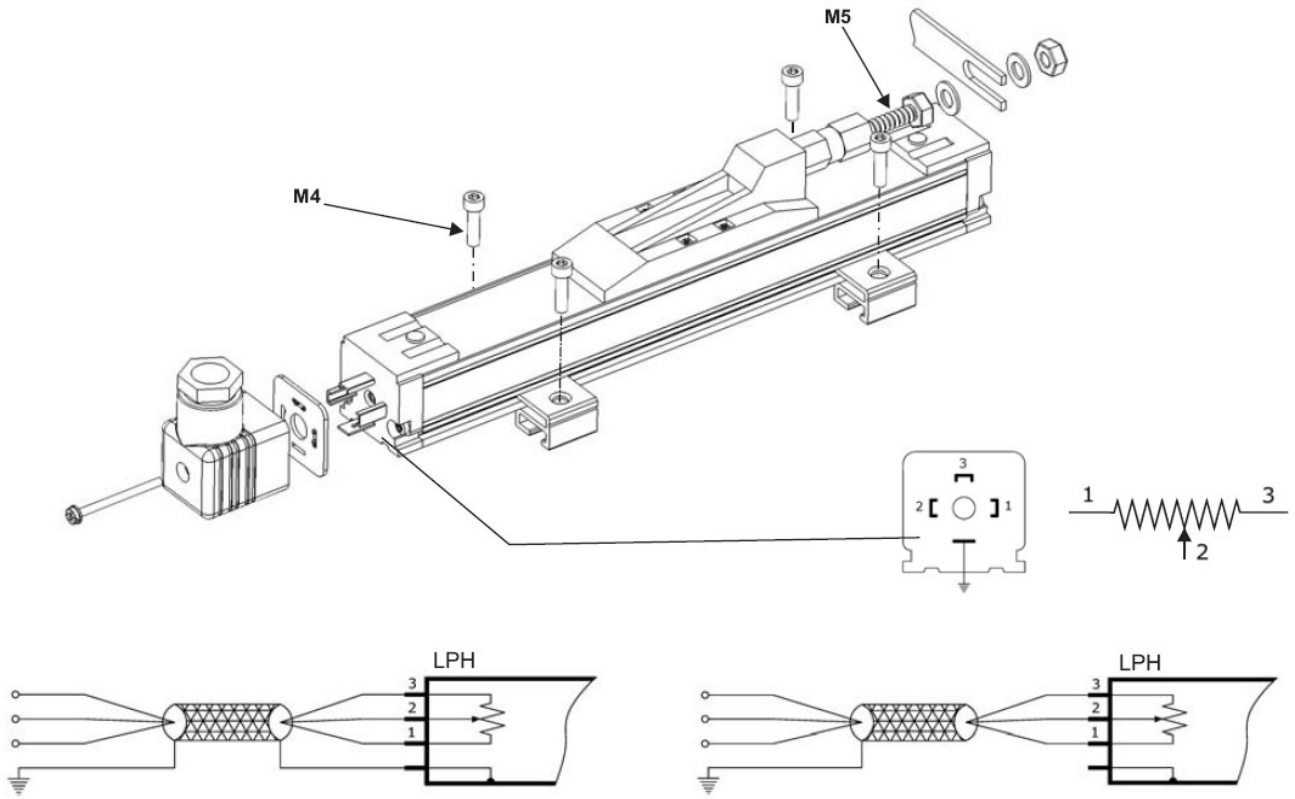
Electrical Connector



US=Useful Stroke  
ES=US+0.5( 0.1mm)  
MS=US+2.75mm( 2.25mm)



**User Guide**



Electrical connections.

- Warranty claims can only be valid if the unit is kept unopened. Opening any of the screws on the body will cancel all warranty claims.
- Users are responsible for any damage caused by misuse of the transducer.
- Users are reminded that wrong centering of the upper slider part may cause permanent damage to the transducer and it would decrease the mechanical life of the transducer dramatically.